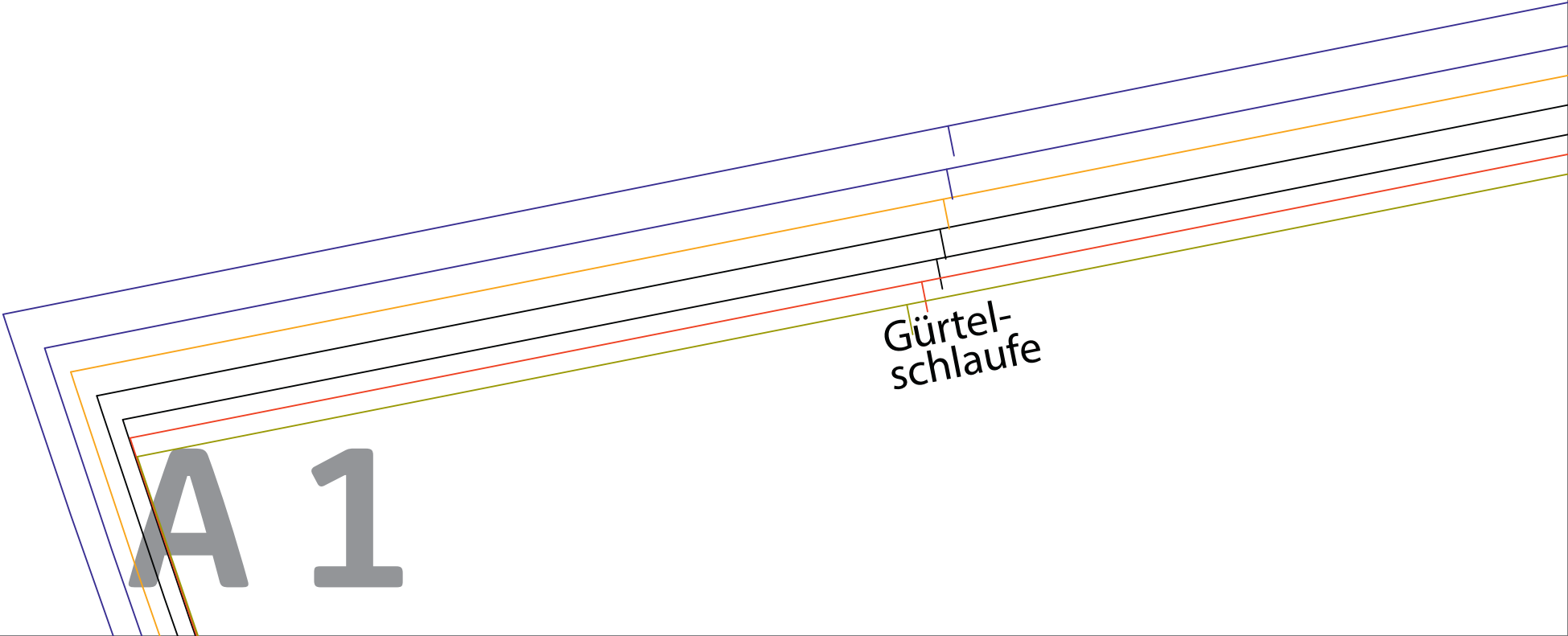


Kontroll-
kästchen
5 x 5 cm



Gürtel-
schleufe

A 1

A 2

XXXX

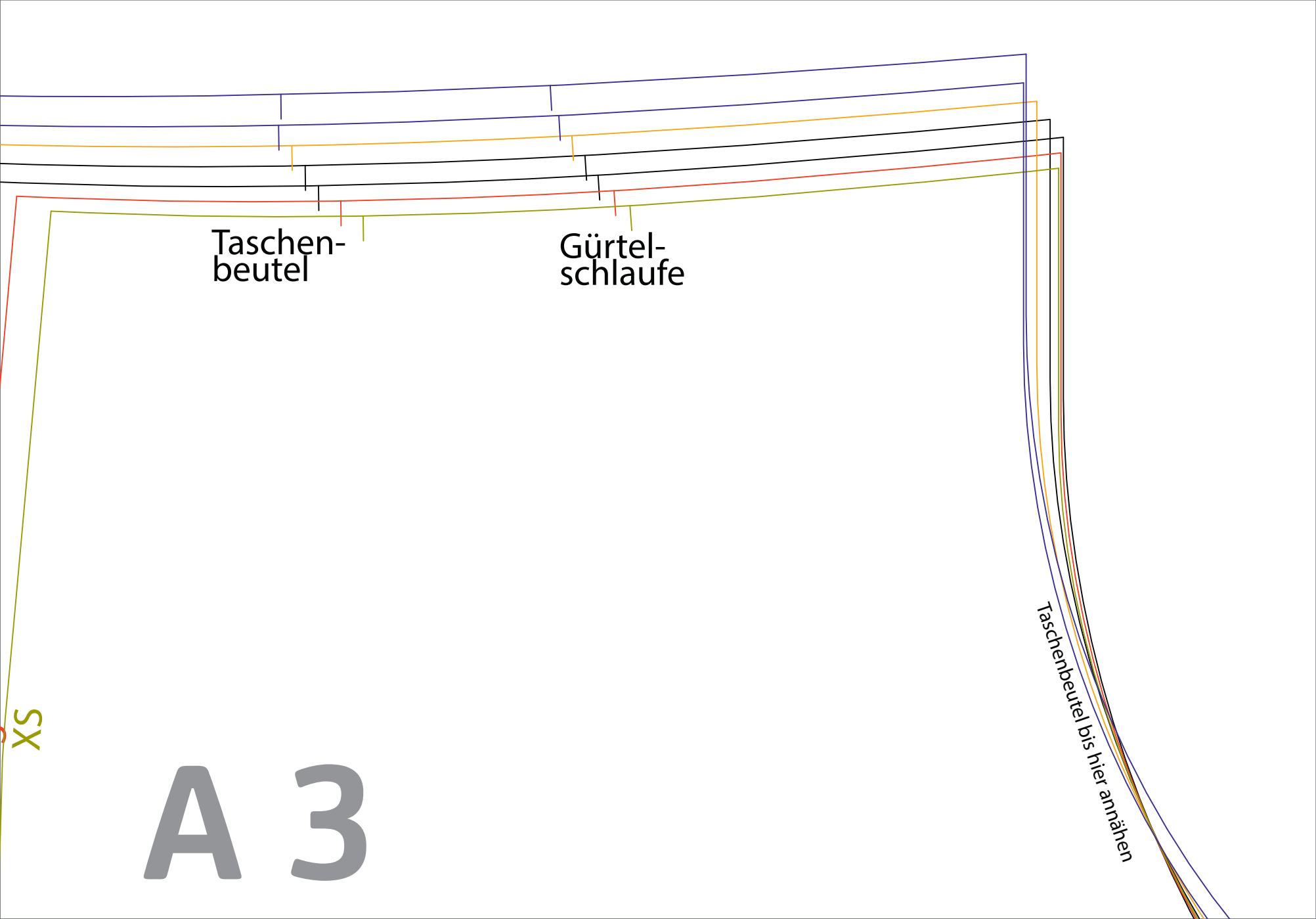
XXX

XL

L

M

S



Taschen-
beutel

Gürtel-
schleufe

XS

A 3

Taschenbeutel bis hier annähen

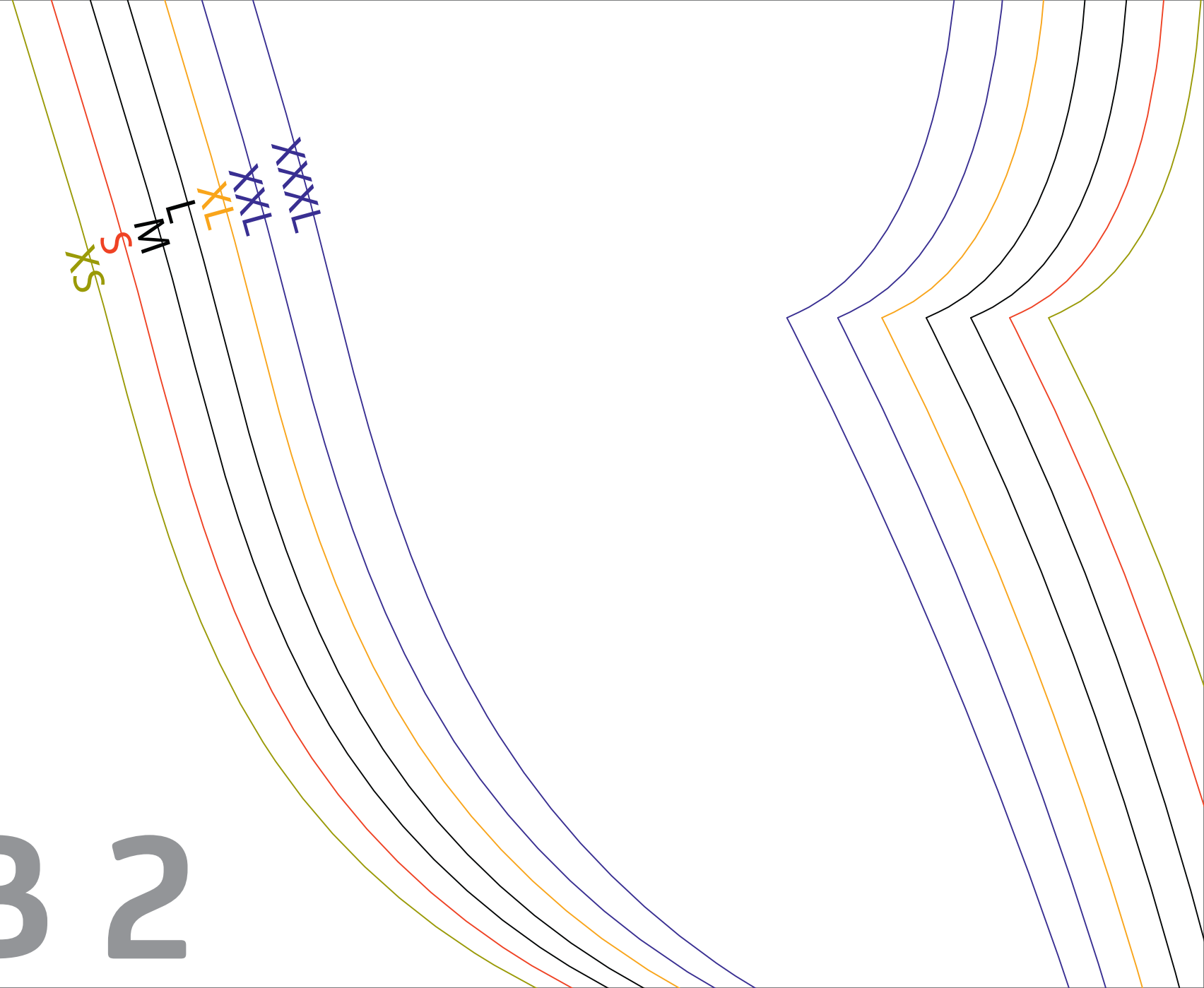


B 1

Hose LIA
Hinterhose
2x gegengleich

B 2

XS
S
M
XL
XXL
XXXL





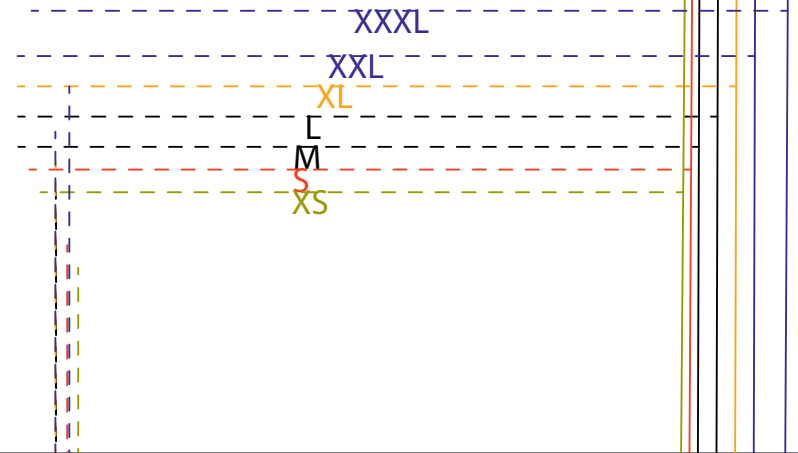
Stoffe Hemmers

stoffe-hemmers.de

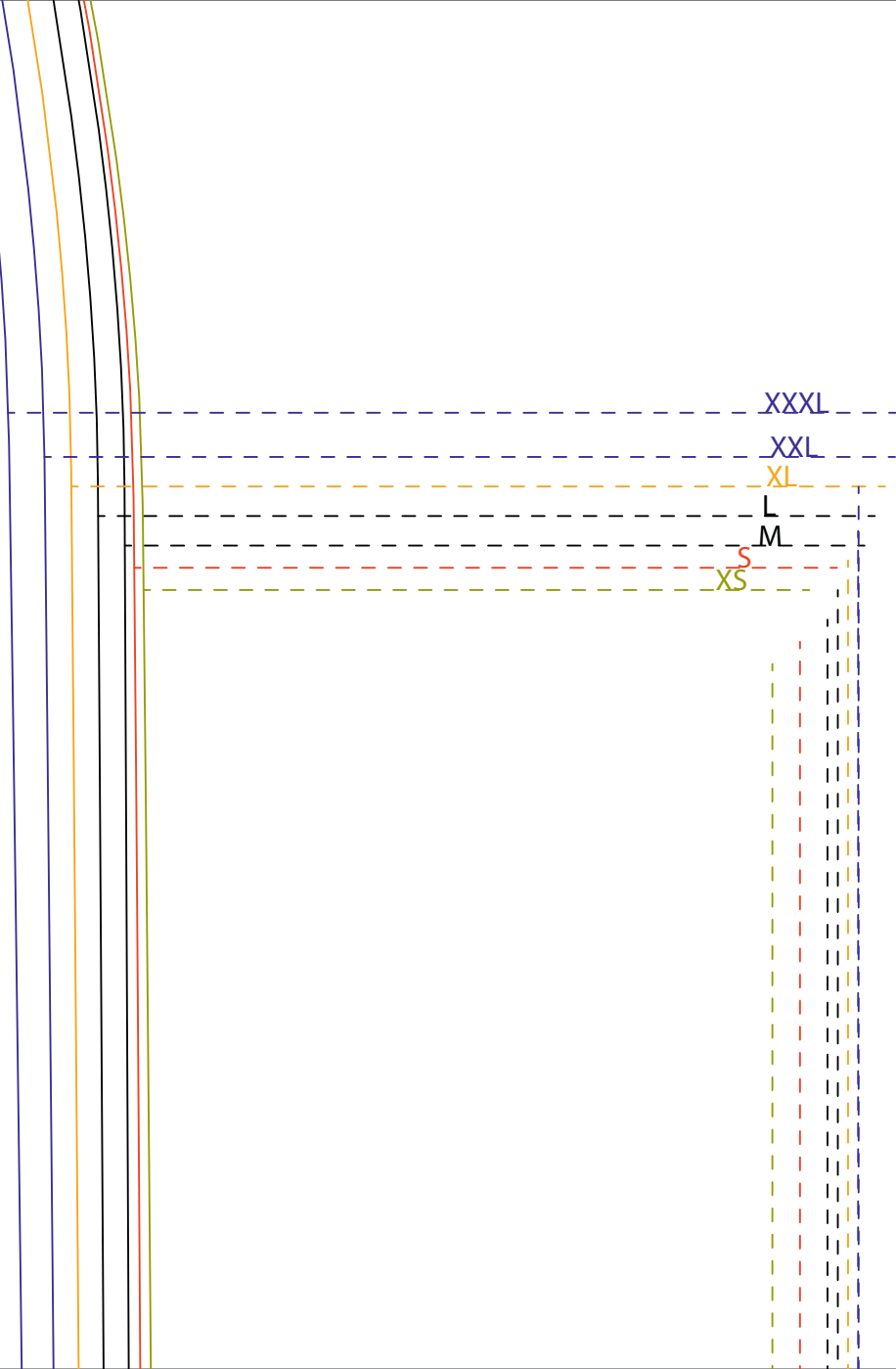
Taschenbeutel

Hose LIA
Vorderhose
2x gegengleich

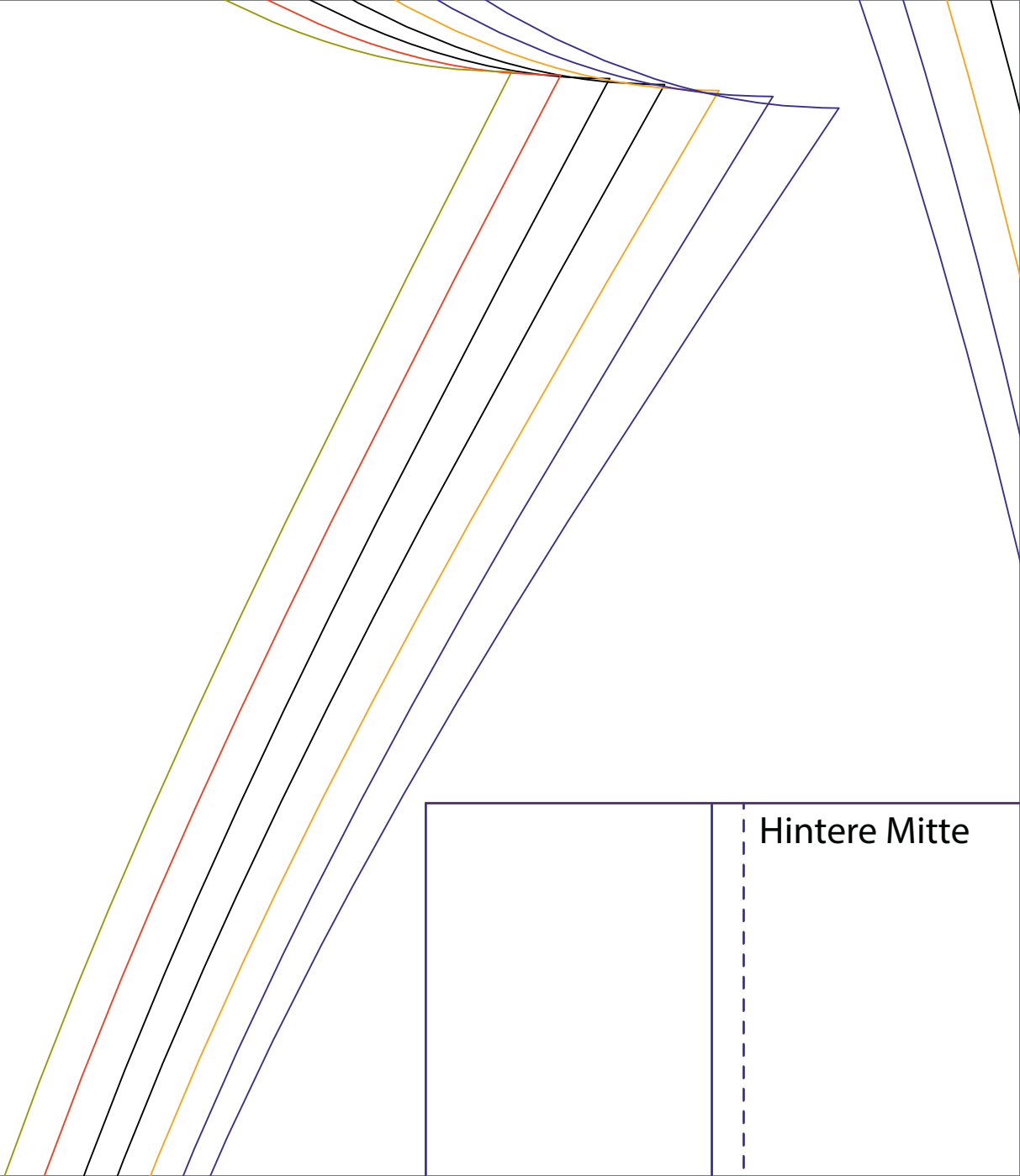
B 3



C 1

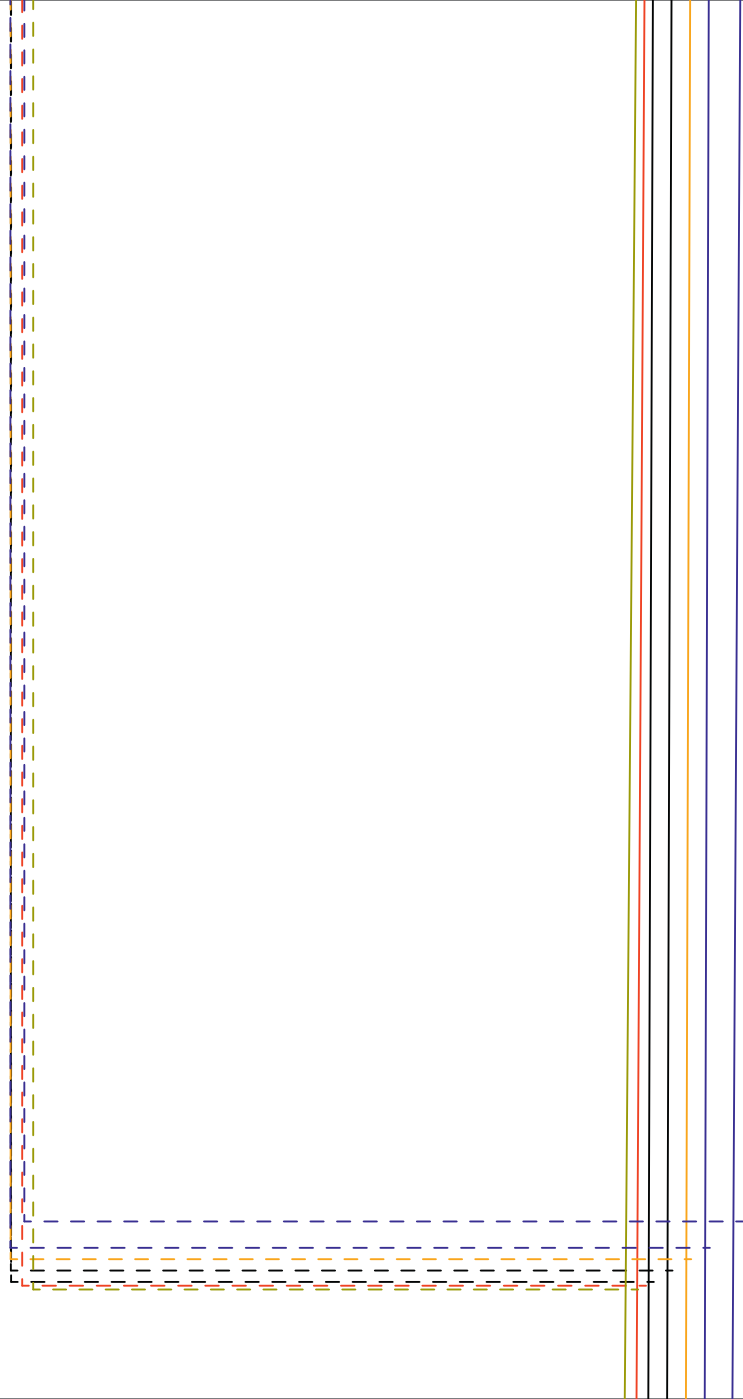


C 2

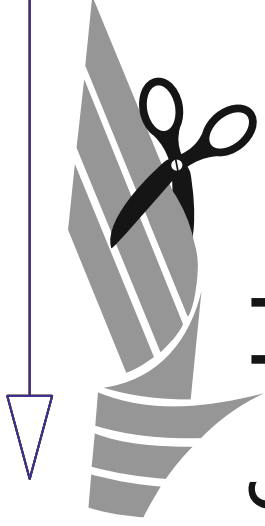


Hintere Mitte

С 3

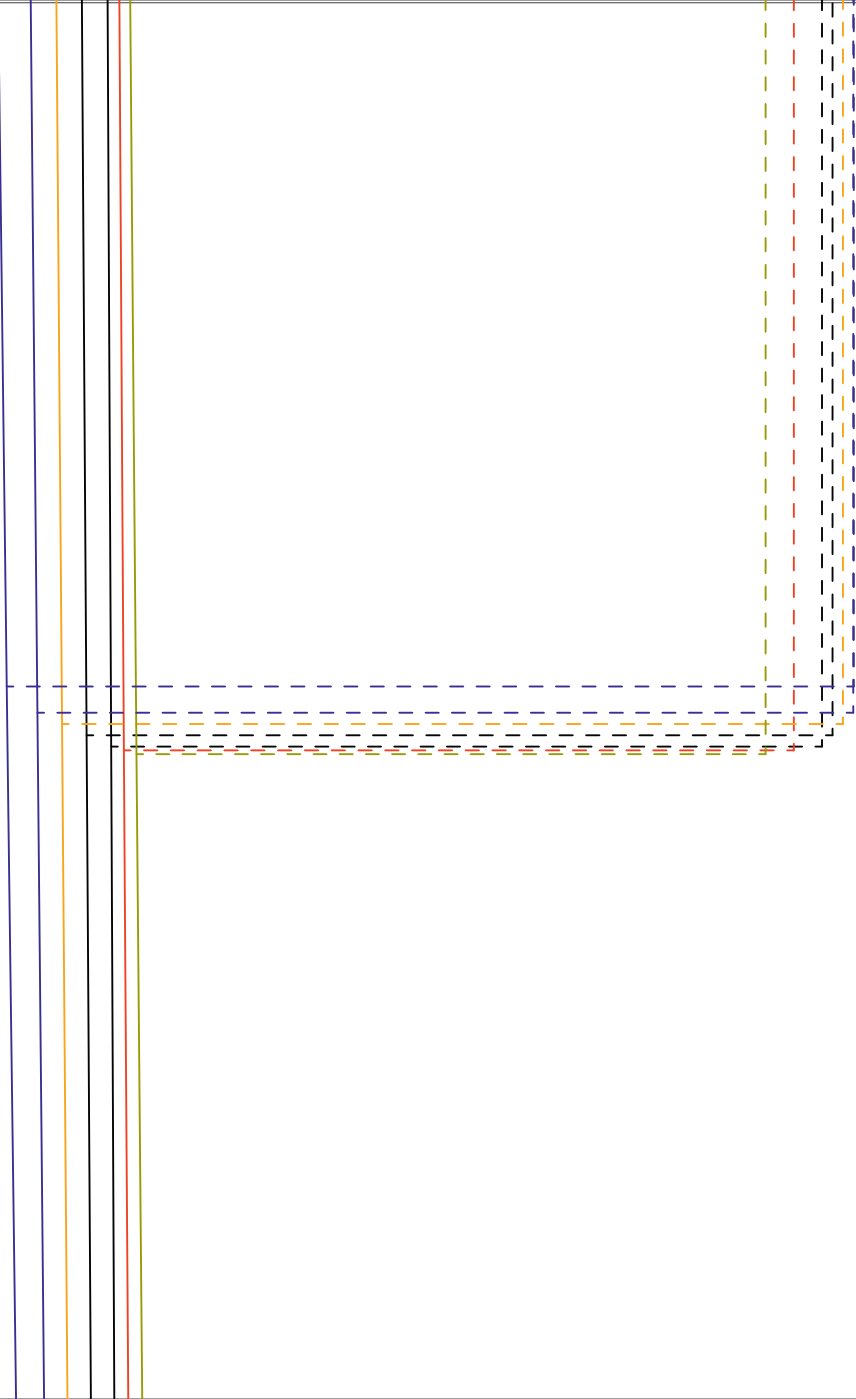


D
1



Stoffe Hemmers

stoffe-hemmers.de



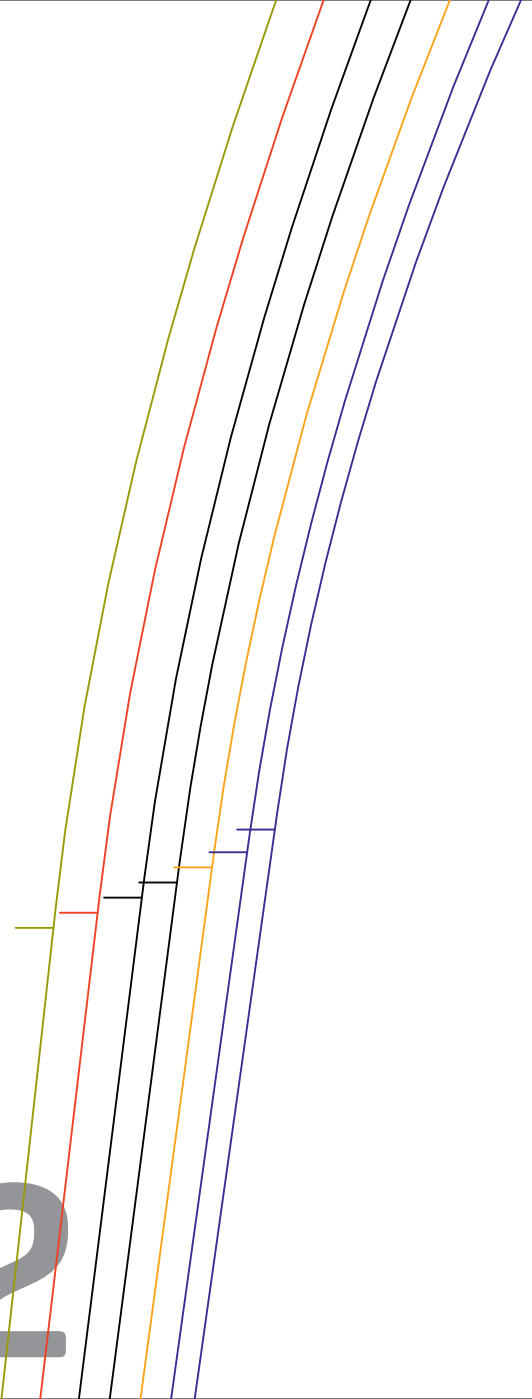
Hose LIA
Bindegürtel
2X gegengleich

Fadenlauf



D

2



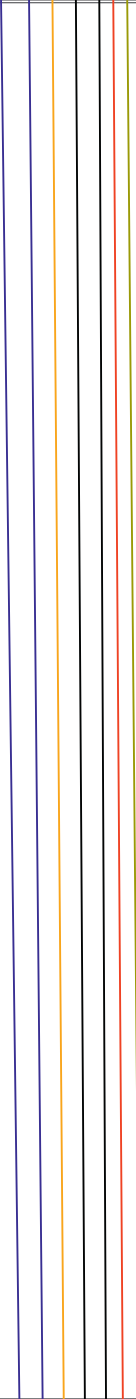
D 3



Hose LIA
Gürtelschlaufen
1x



FERTGMASS - inkl.Nahtzugaben





Stoffe Hemmers

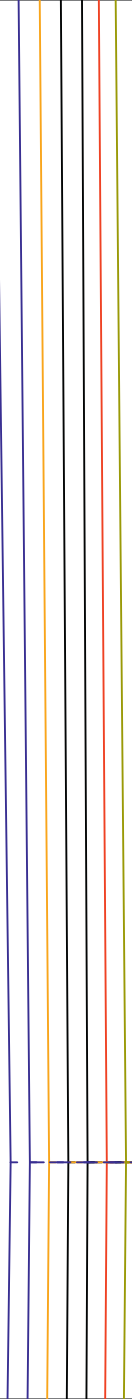
stoffe-hemmers.de

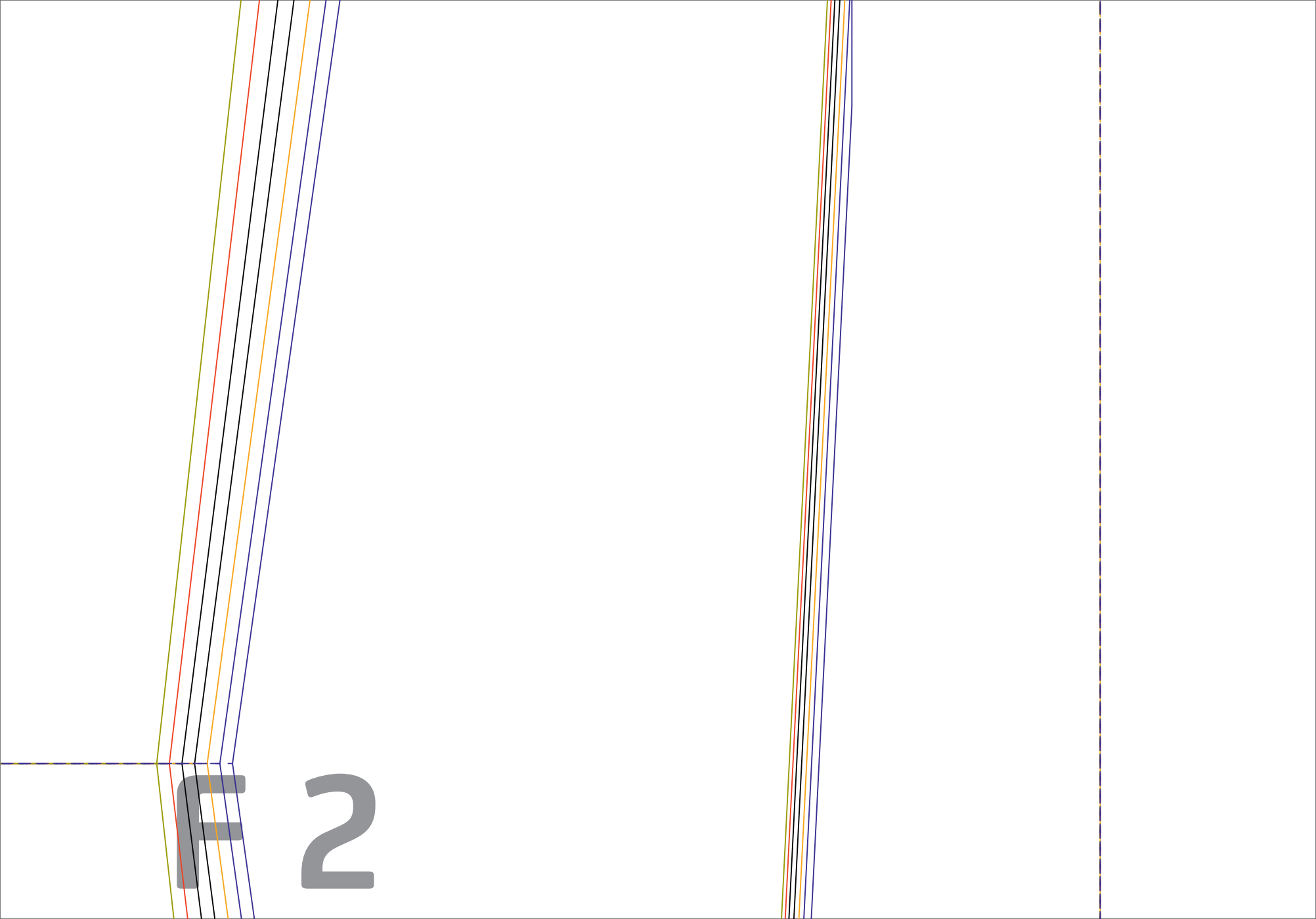
2
E

E 3



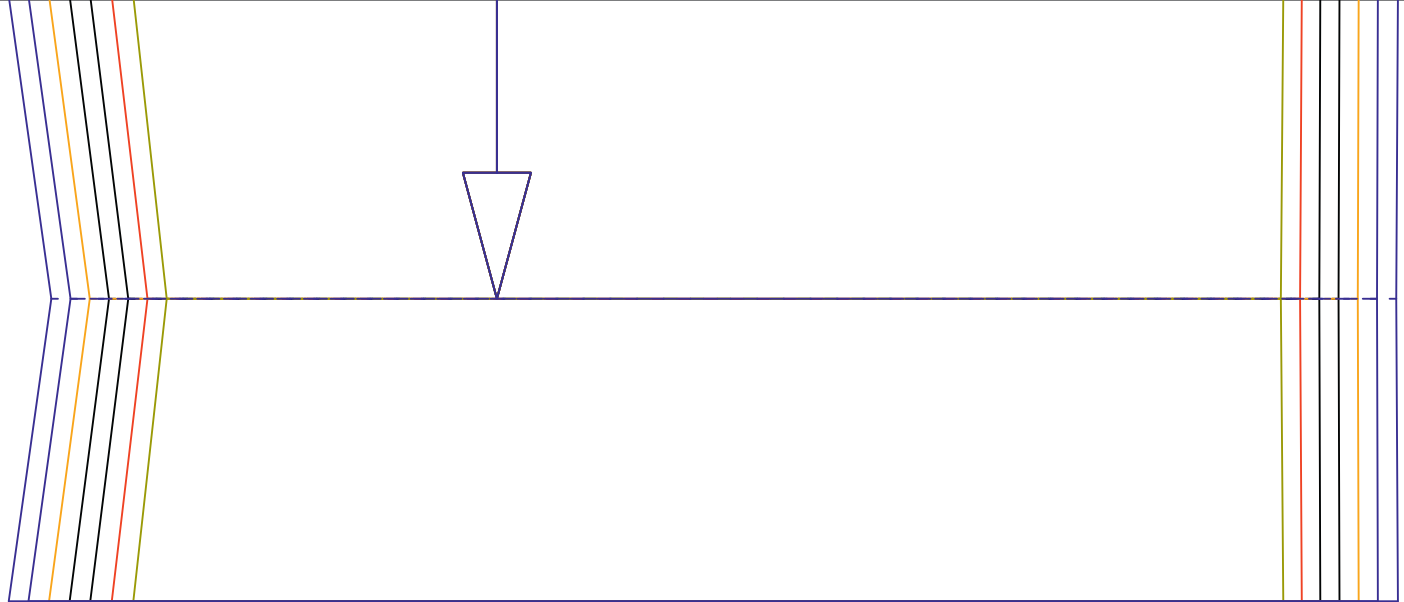
F 1





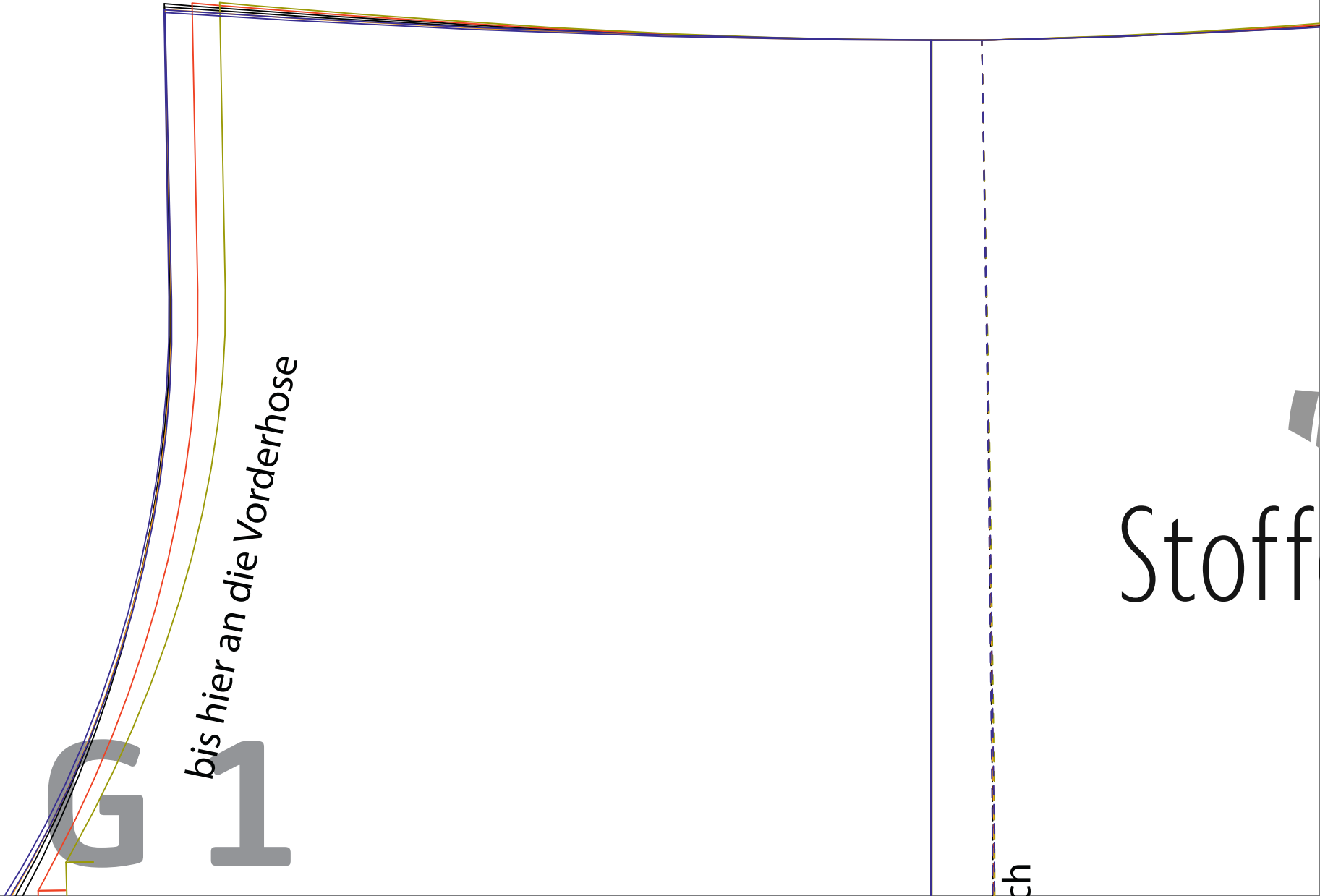
The diagram features a white background with a black border. On the left side, there are several parallel lines sloping upwards from left to right. These lines are colored in a sequence: green, red, black, orange, and blue. A horizontal dashed line, colored blue and yellow, extends from the left edge to the start of the green line. In the lower-left quadrant, the text "E 2" is written in a large, bold, grey font. On the right side of the diagram, there is a vertical dashed line, colored blue and yellow, extending from the bottom edge to the top. To the left of this vertical line, there is another set of parallel lines sloping upwards from left to right, colored in the same sequence as the first set: green, red, black, orange, and blue.

E 2



F 3

Vordere Mitte / Stoffbruch
Fadenlauf



bis hier an die Vorderhose

Stoff

ch



e Hemmers
stoffe-hemmers.de

G 2

Seitennaht / an die Hinterhose

G

3

ben



Stoffe Hemmers

stoffe-hemmers.de

XSS M

stoffe-hemmers.de

Stoffe Hemmers



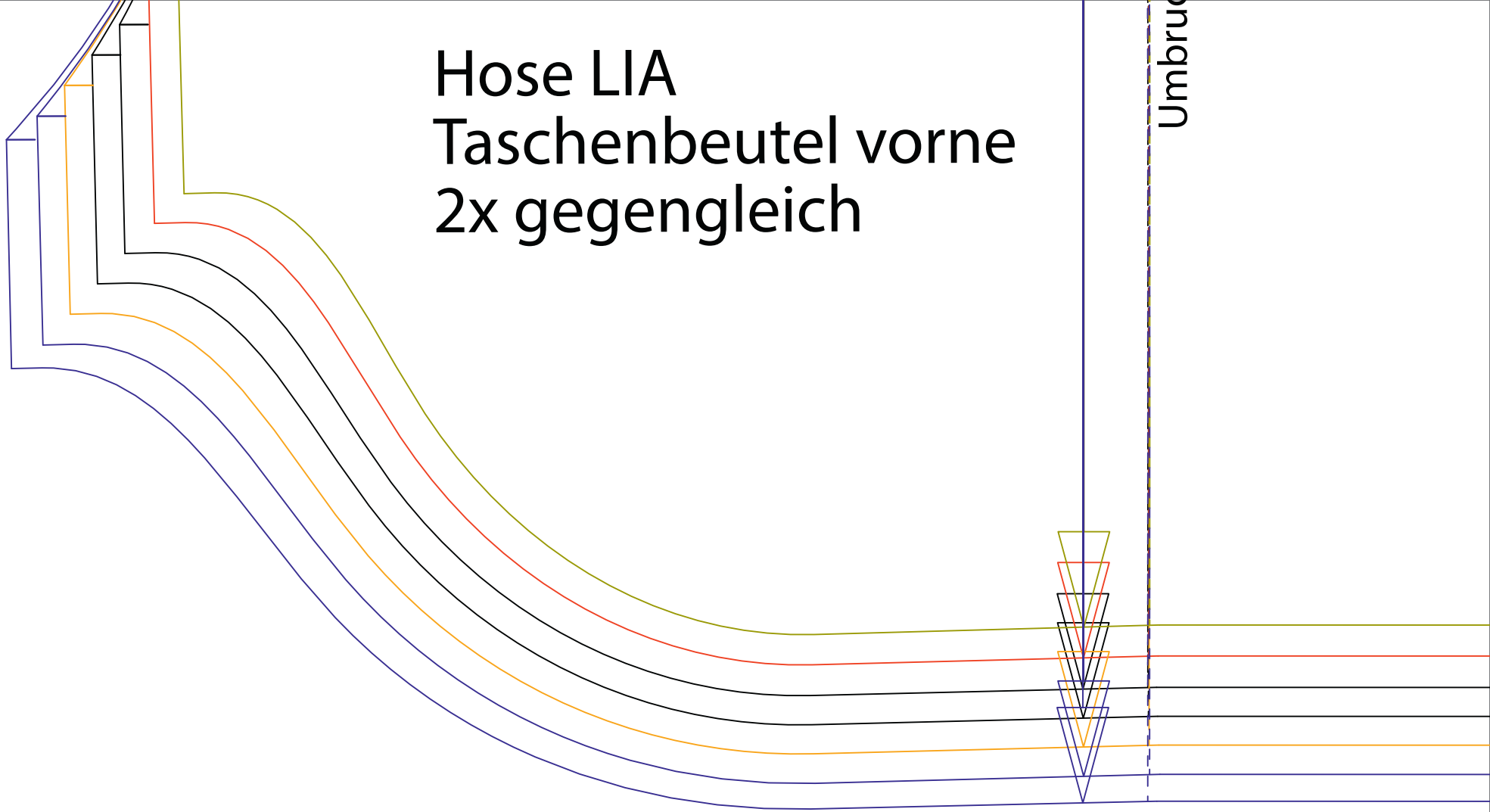
Seitennaht

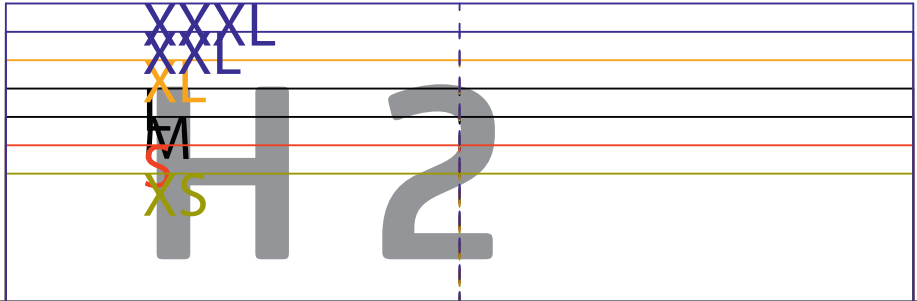
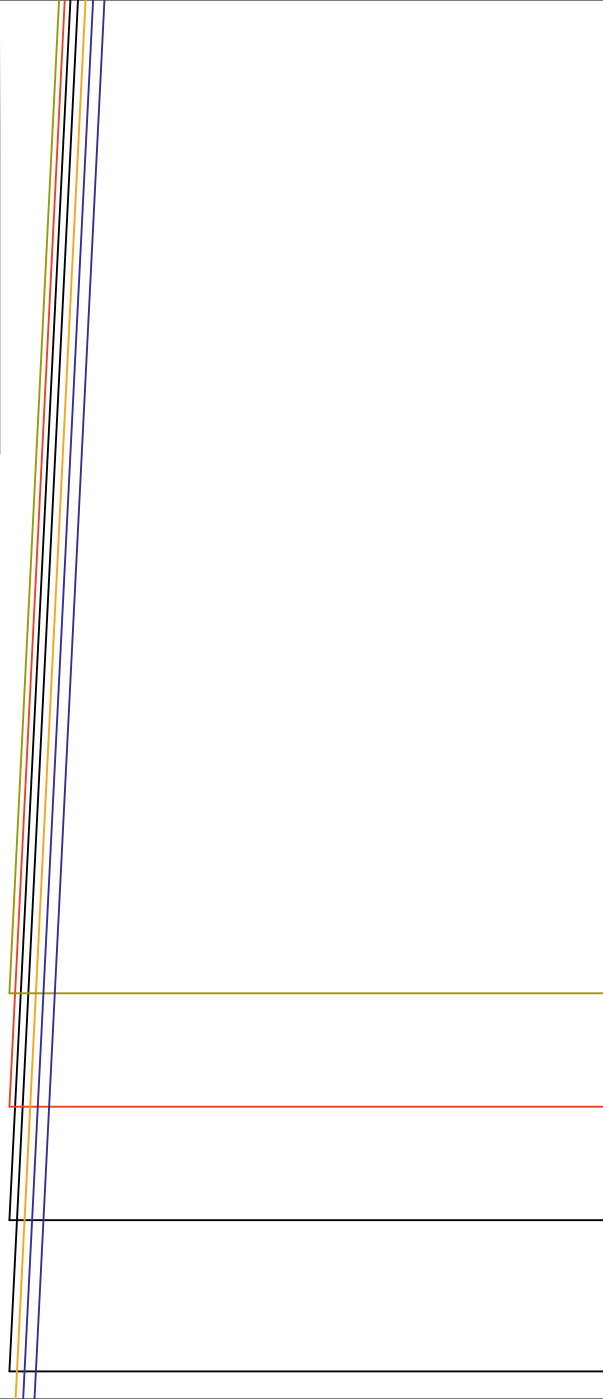
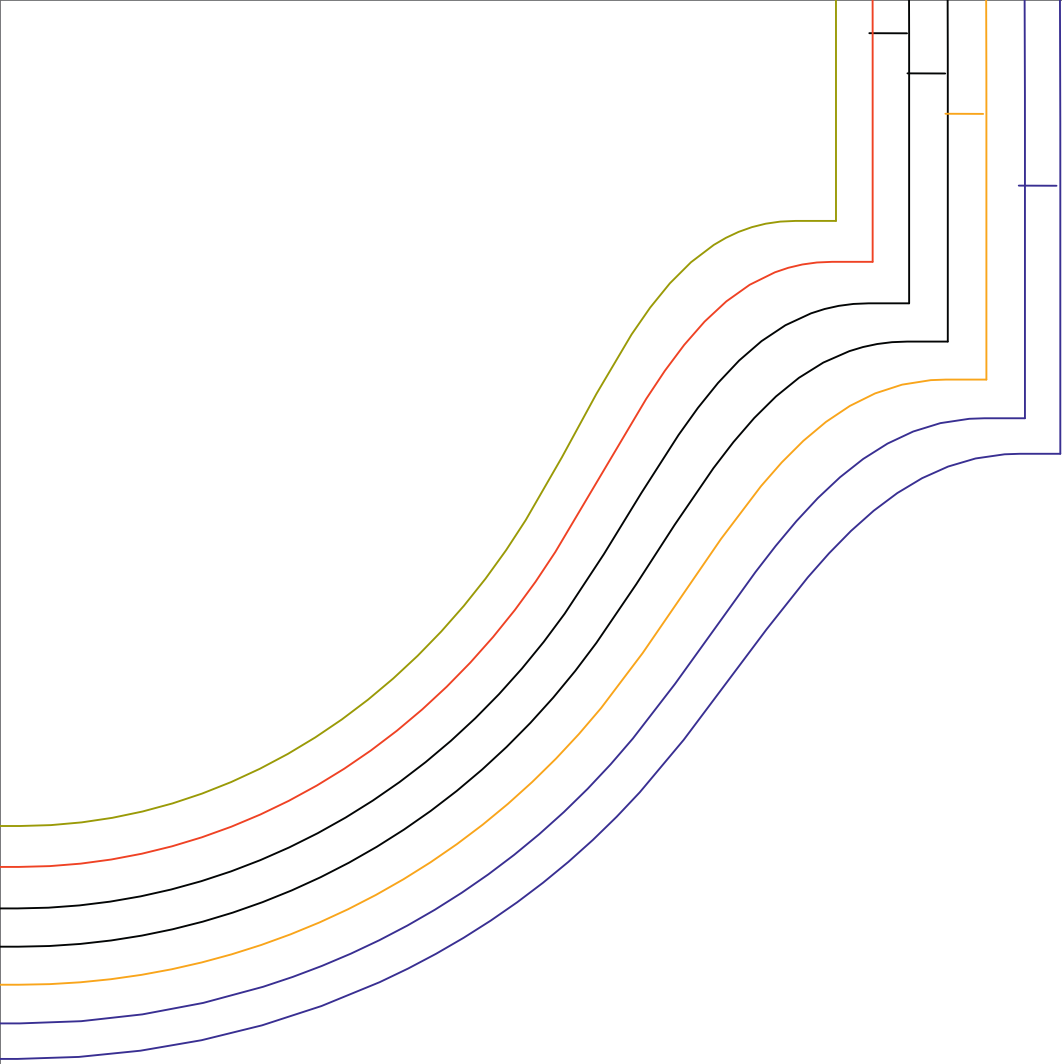
XSS M

Hose LIA
Bund
1x im Stoffbruch

Hose LIA
Taschenbeutel vorne
2x gegengleich

Umbruch





SX

S

W

1

H
3

Hose LIA
Taschenschlaufe
2x
FERTGMASS - inkl. Nahtzugabe

7XXX 7XX 7X 7

7XXX 7XX 7X 7

1
2



Stoffe Hemmers

Position
Taschenschlaufe

Hose LIA
Taschenpatte
2x



1XXX

1XX

1X

13

	SX
	S
	W
	1
	1X
	1XX
	1XXX