

10 x 10 cm

4 x 4 Inch

1,0

1A

2A

droit fil/ Middenvoor draadrichting

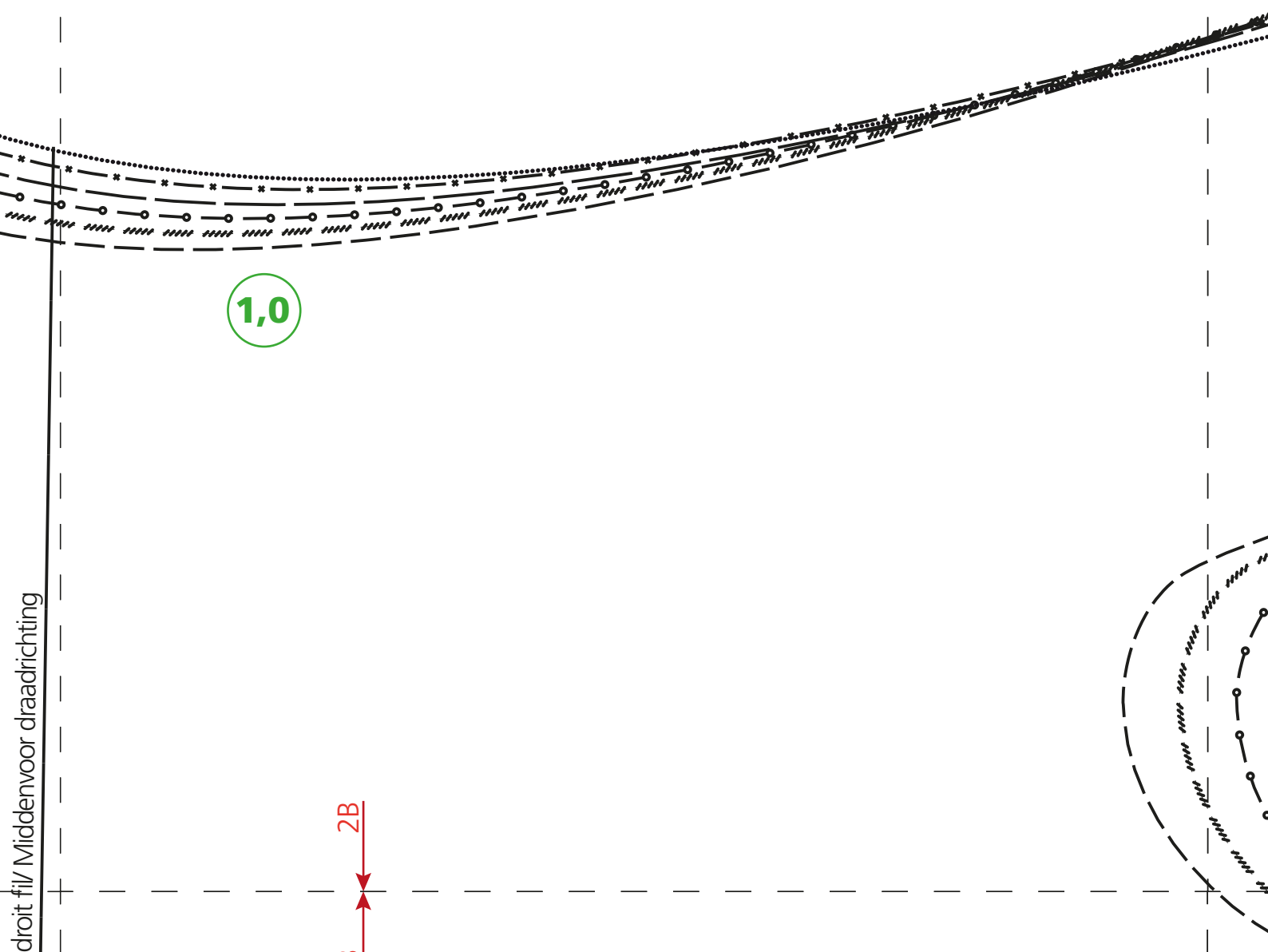
1A

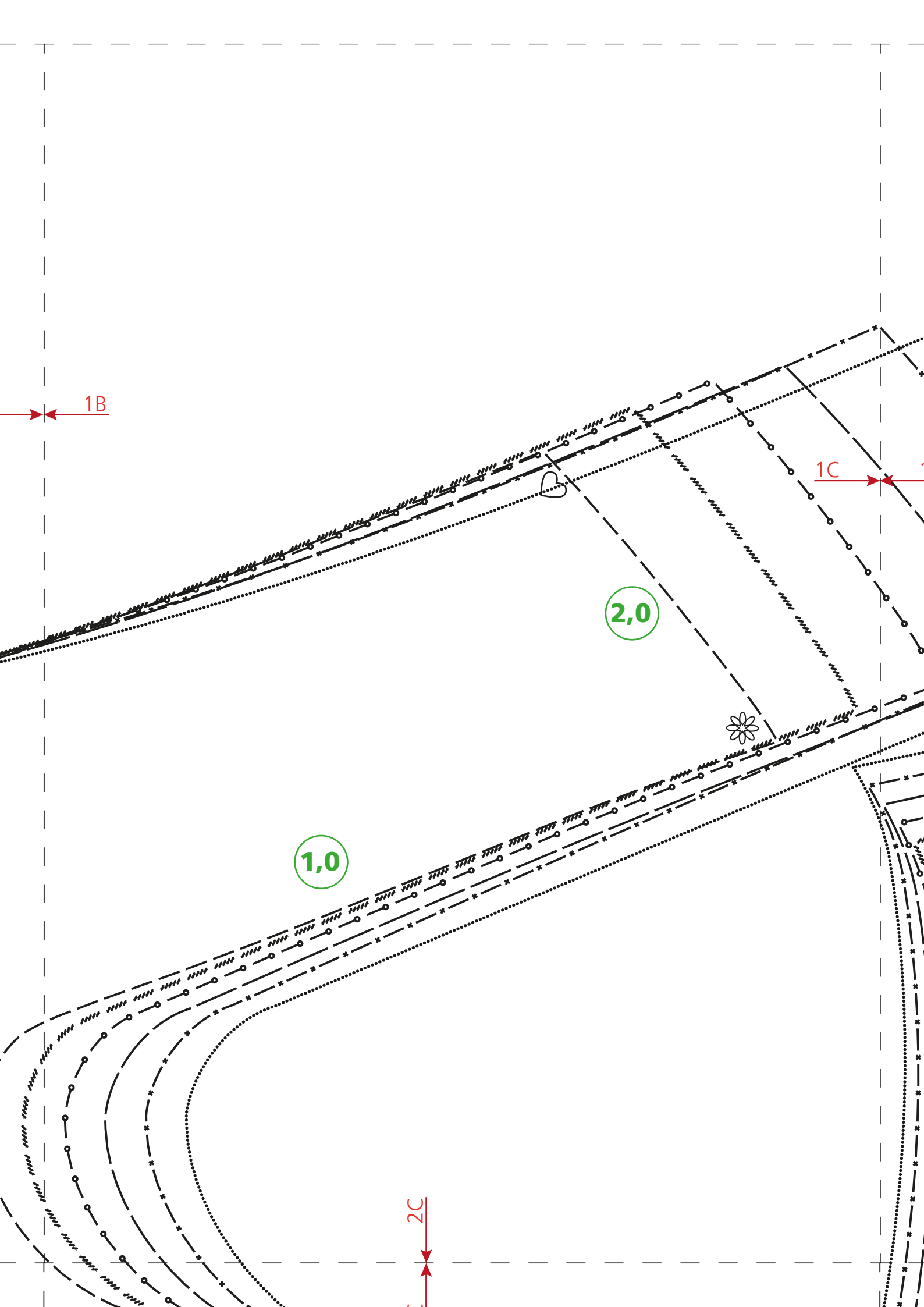
1B

1,0

2B

droit fil/ Middenvoor draadrichting





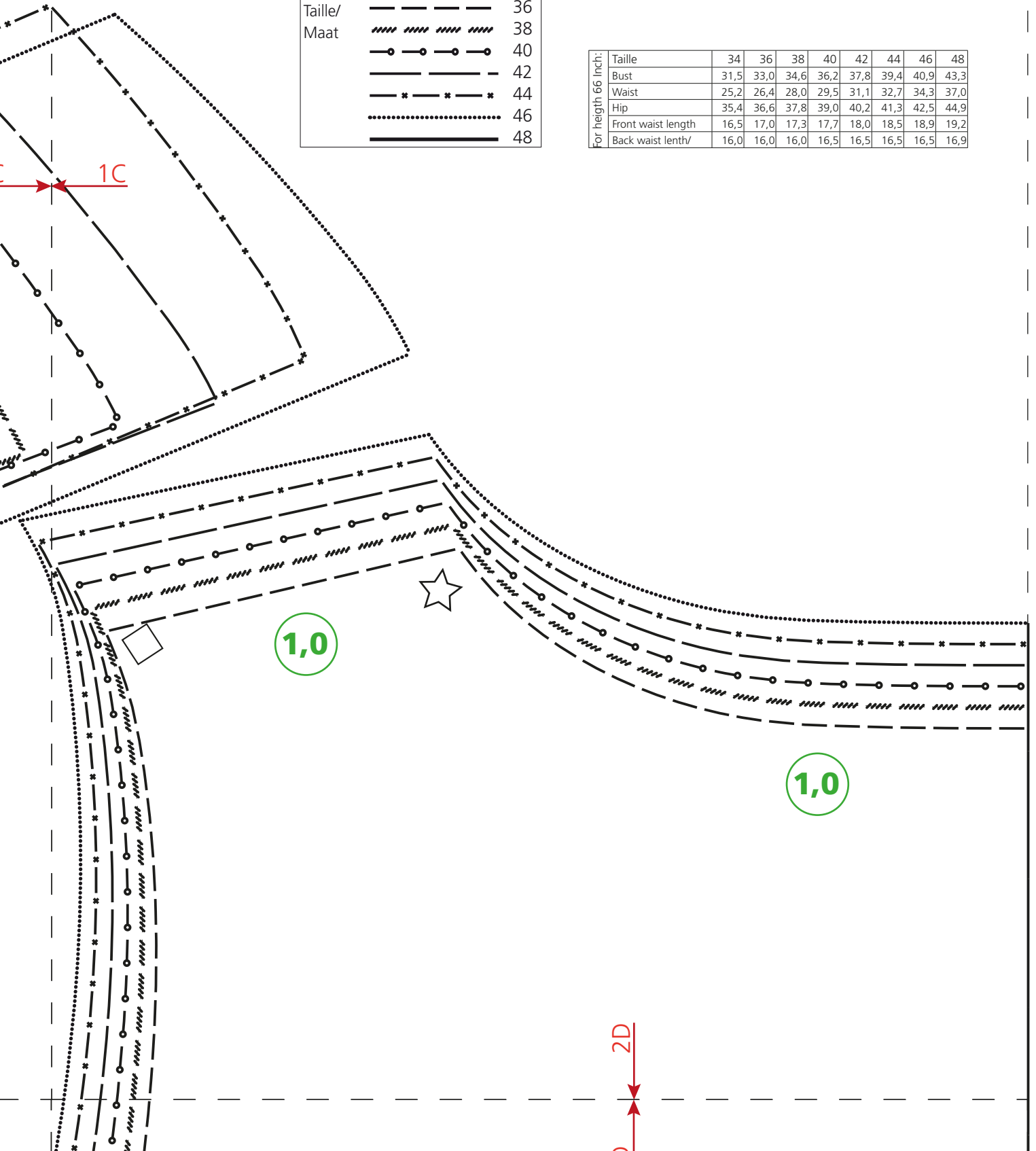
Für Körpergröße/ for height/ pour la taille/ Maten voor lichaamsgrootte 168 cm

Größe/ Size/ Taille/ Maat	34	36	38	40	42	44	46	48
Oberweite/Bust/ Poitrine/ Bovenwijdte	80	84	88	92	96	100	104	110
Tailenweite/ Waist/ Taille/ Tailenwijdte	64	67	71	75	79	83	87	93
Hüftweite/ Hip/ Hanche/ Heupwijdte	90	93	96	99	102	105	108	114
Vord. Tailenlg./ Front waist length/ Longueur taille devant/ Taillelengte voor	42	43	44	45	46	47	48	49
Rückw. Tailenlg./ Back waist lenth/ Longueur taille dos/ Ruglengte tot taille	41	41	41	42	42	42	42	43

Legende/ Legend/ Légend

Größe/	-----	34
Size/	-----	36
Taille/	-----	38
Maat	-----	40
	-----	42
	-----	44
	-----	46
	-----	48

for height 66 inch:	34	36	38	40	42	44	46	48
Taille	31,5	33,0	34,6	36,2	37,8	39,4	40,9	43,3
Bust	25,2	26,4	28,0	29,5	31,1	32,7	34,3	37,0
Waist	35,4	36,6	37,8	39,0	40,2	41,3	42,5	44,9
Hip	16,5	17,0	17,3	17,7	18,0	18,5	18,9	19,2
Front waist length	16,0	16,0	16,0	16,5	16,5	16,5	16,5	16,9
Back waist lenth/								





2A

3A

V1:
1,0 cm

V2:
2,0 cm

2A

Vordere Mitte Fadenlauf/ Centre front straight grain/ Milieu endroit droit fil/ Mic

Vordere Mitte Fadenlauf/ Centre front straight grain/ Milieu endroit droit fil/ Mitte

bernette

SWISS DESIGN

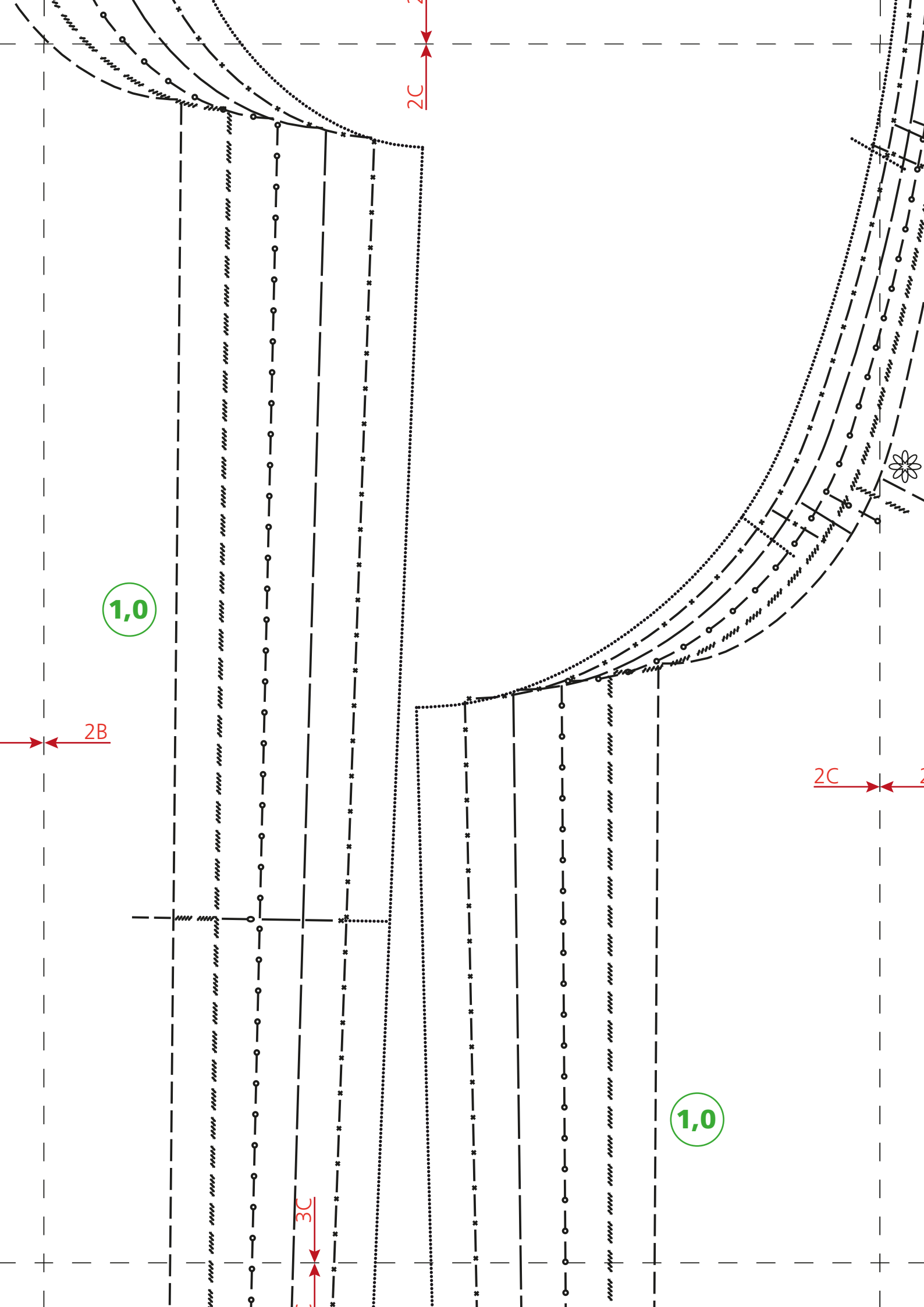
A

2B

2A

2B

3B





2C

B

3D

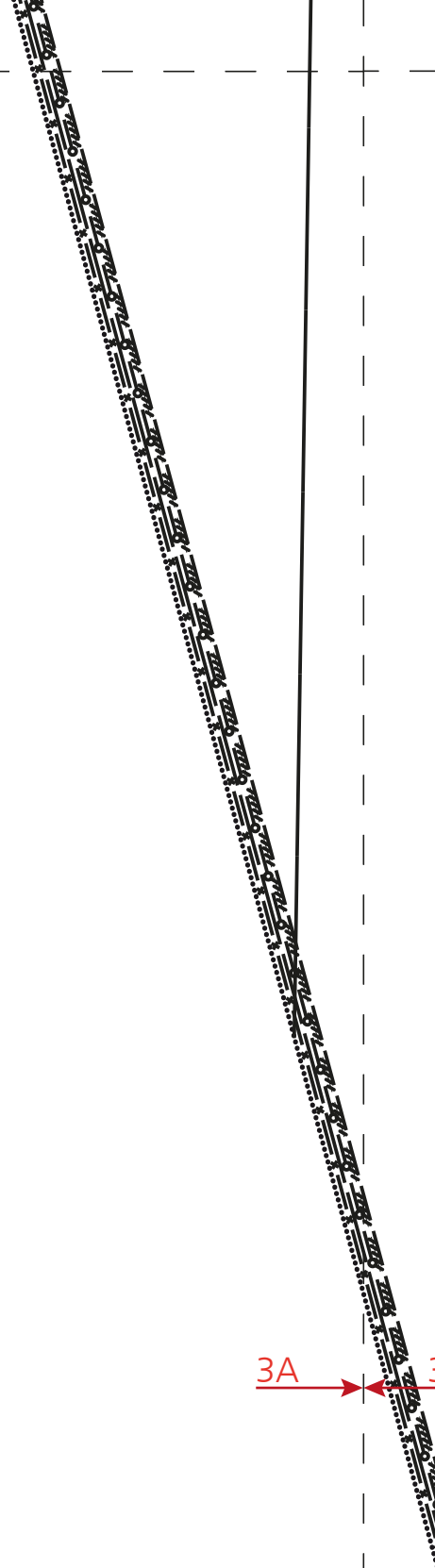
2D

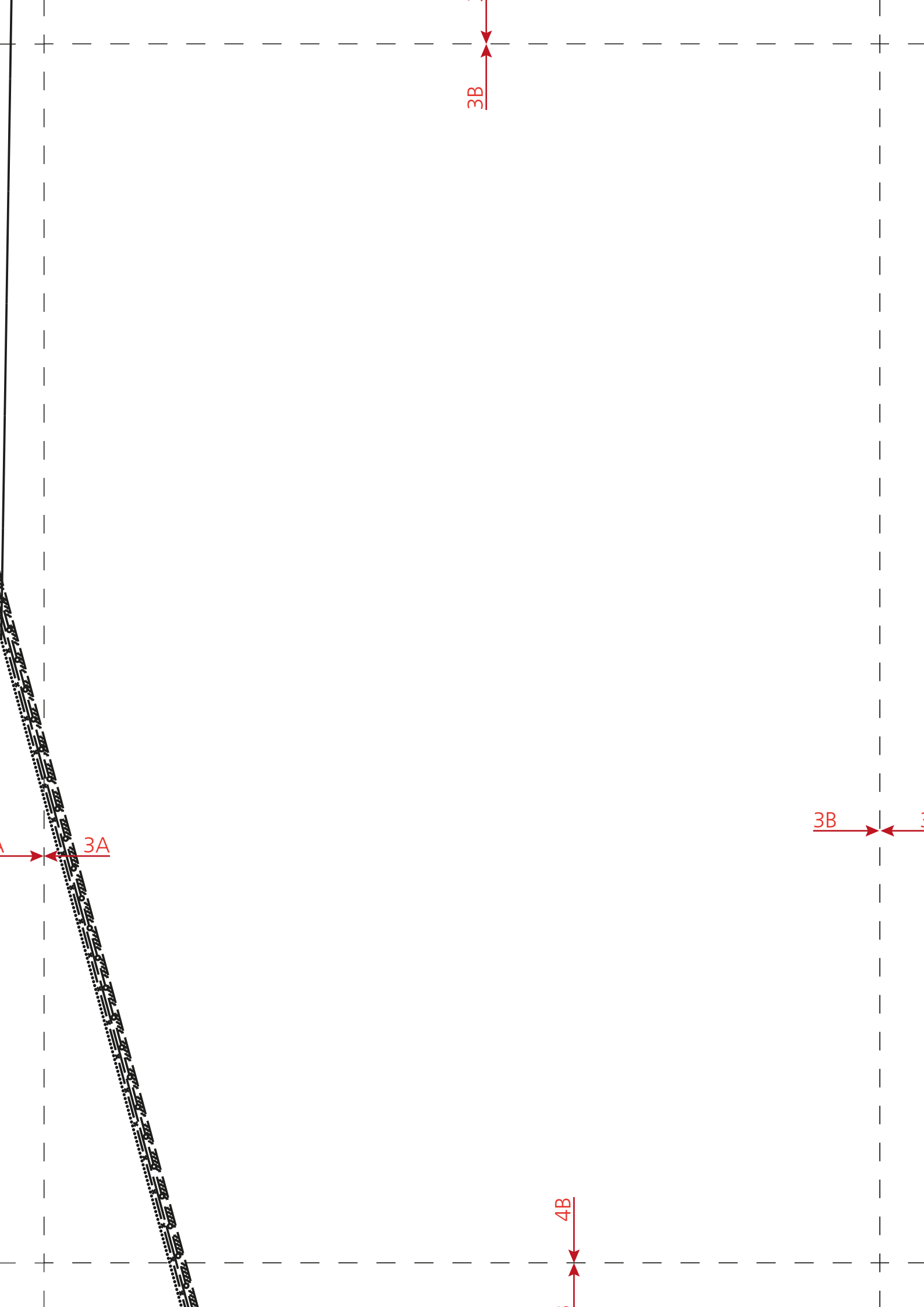
Rückwärtige Mitte Stoffbruch Fadenlauf / Centre back fold straight grain / Milieu envers pli droit fil / Middenachter stofvouw Draadrichting

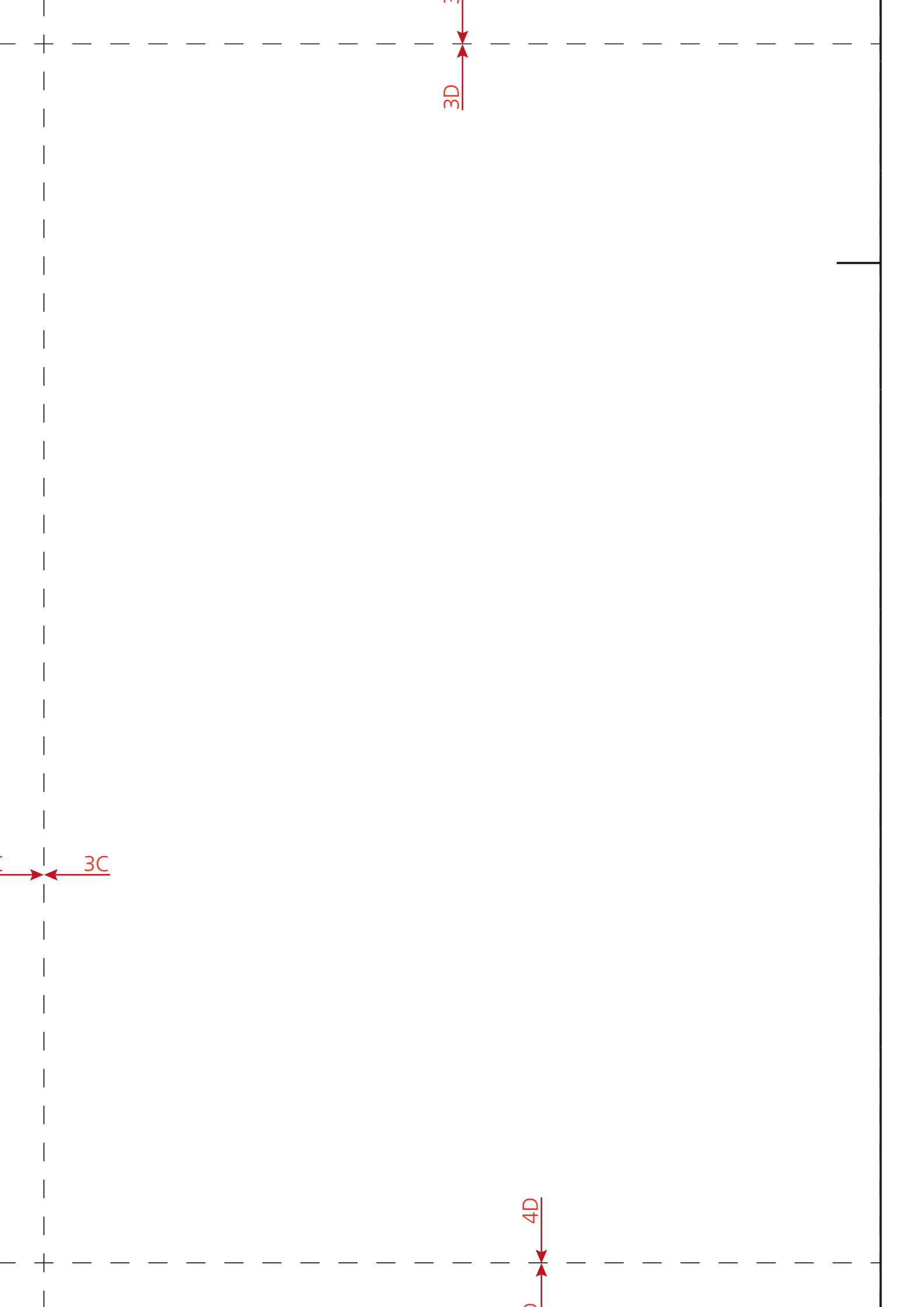


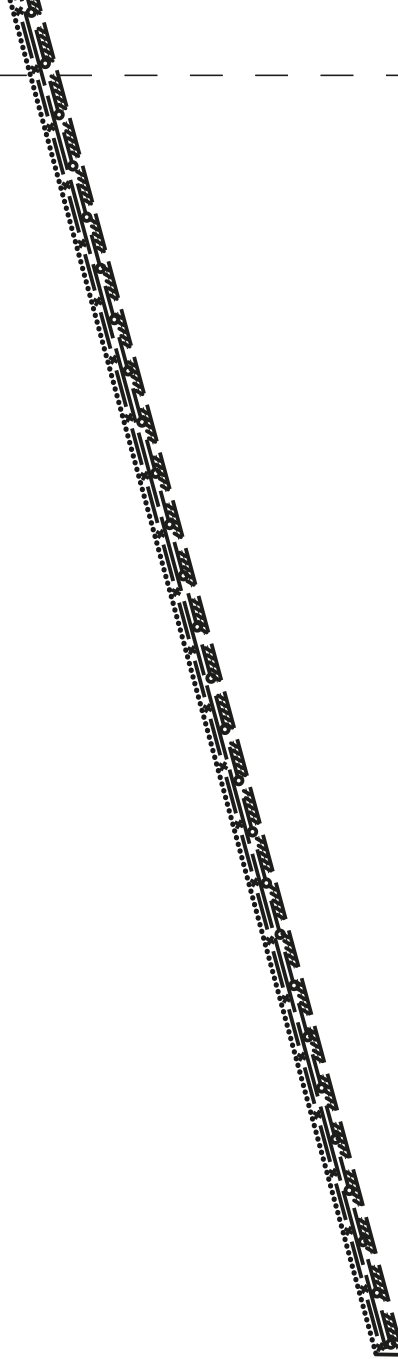
3A

3A





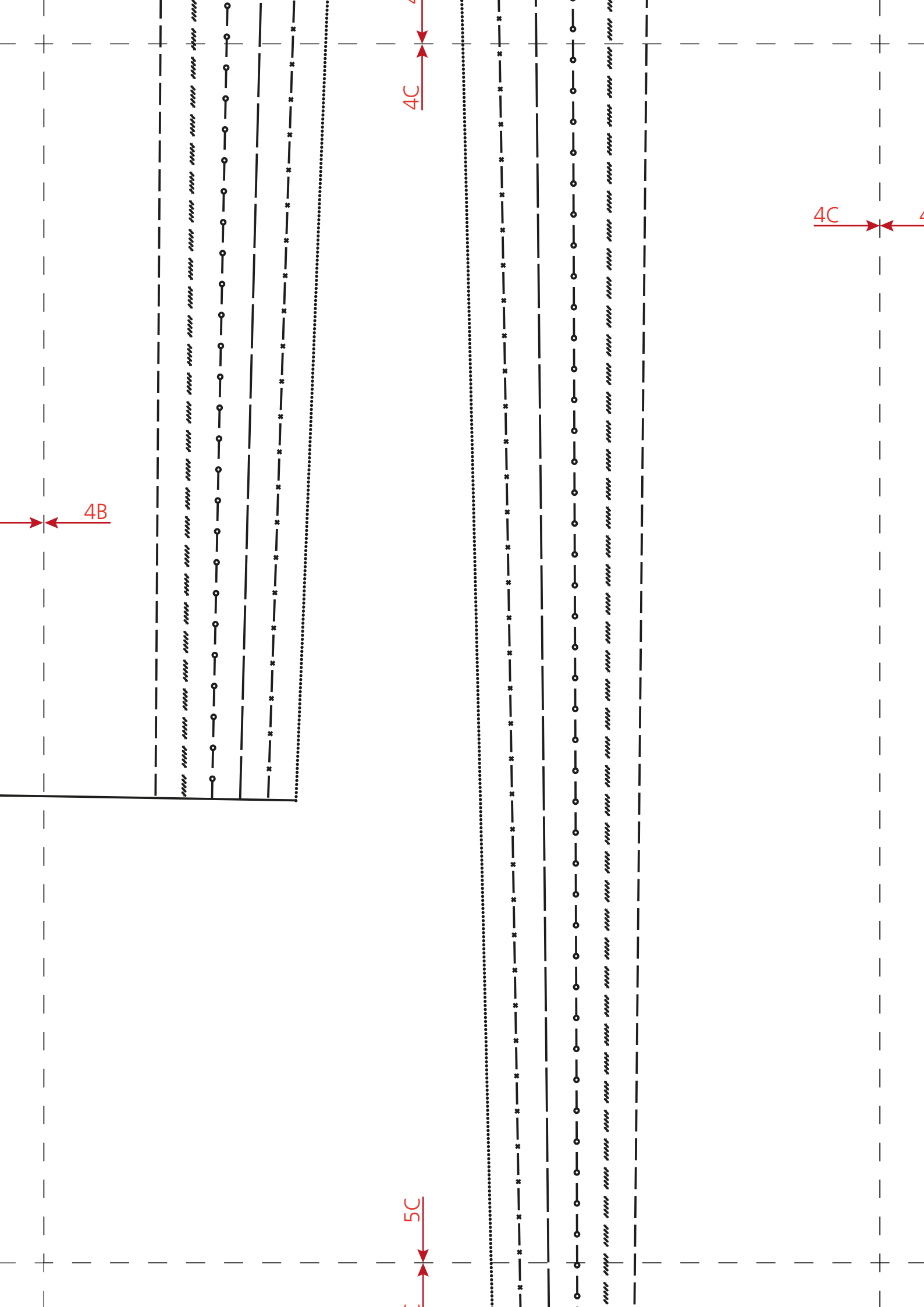




4B

4B

4,0

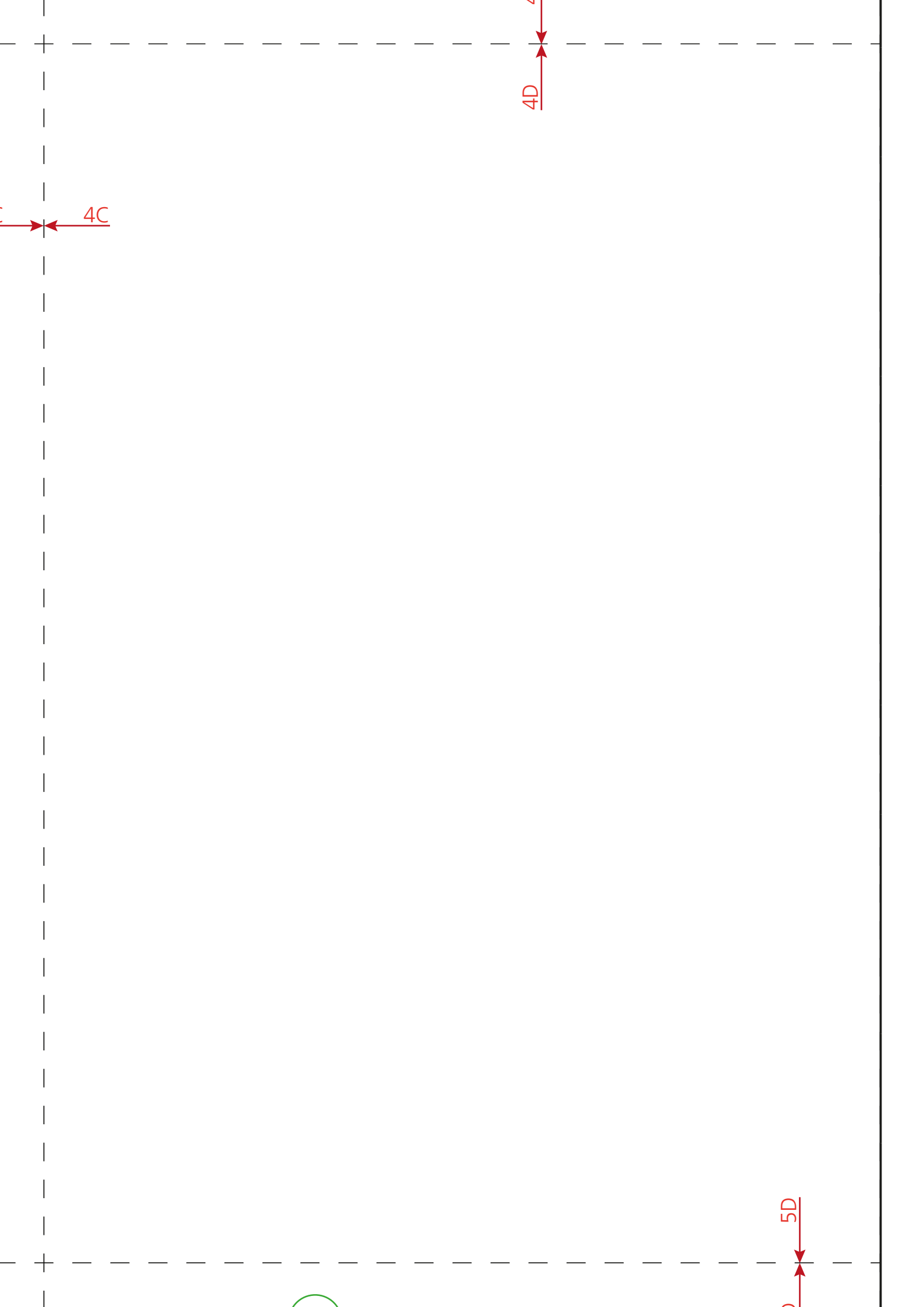


4B

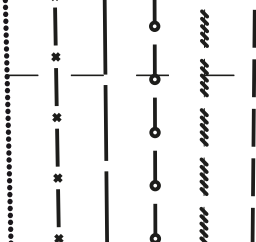
4C

5C

4C



5C



4,0

5D