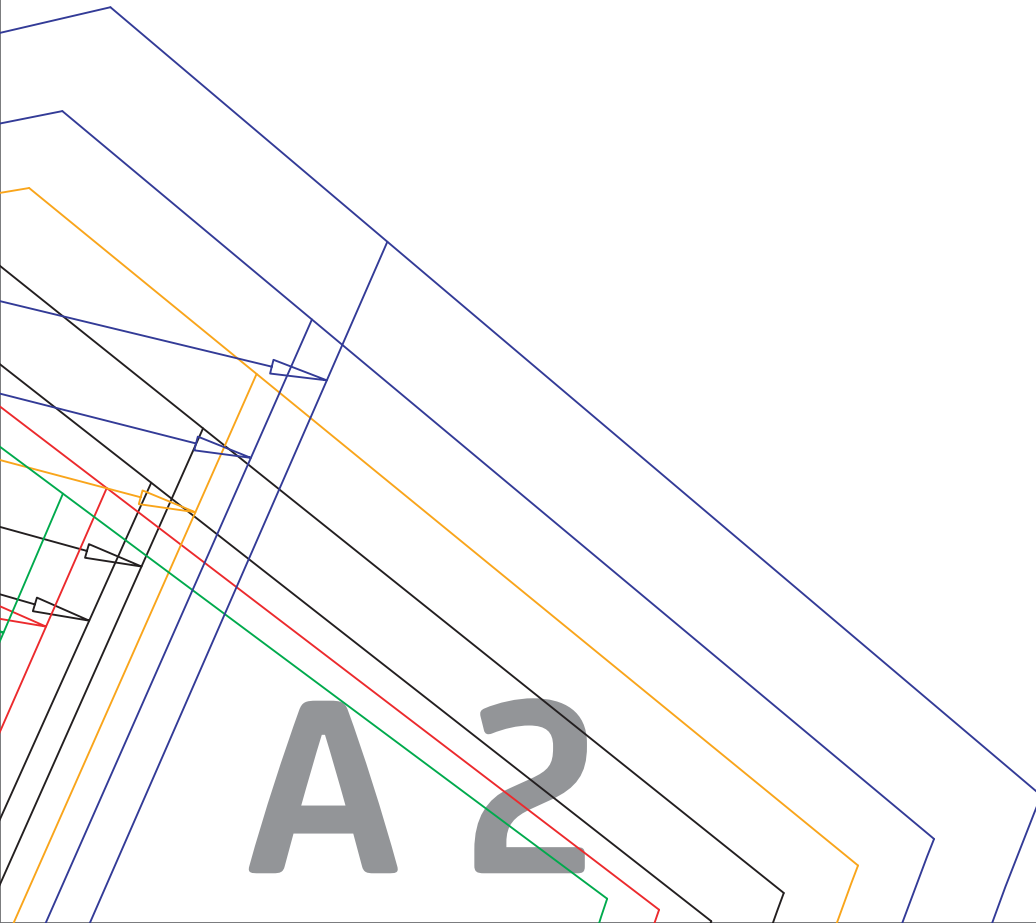
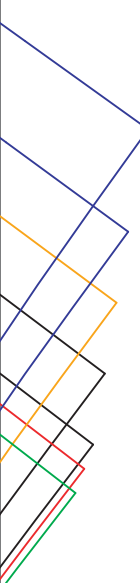


**A1**

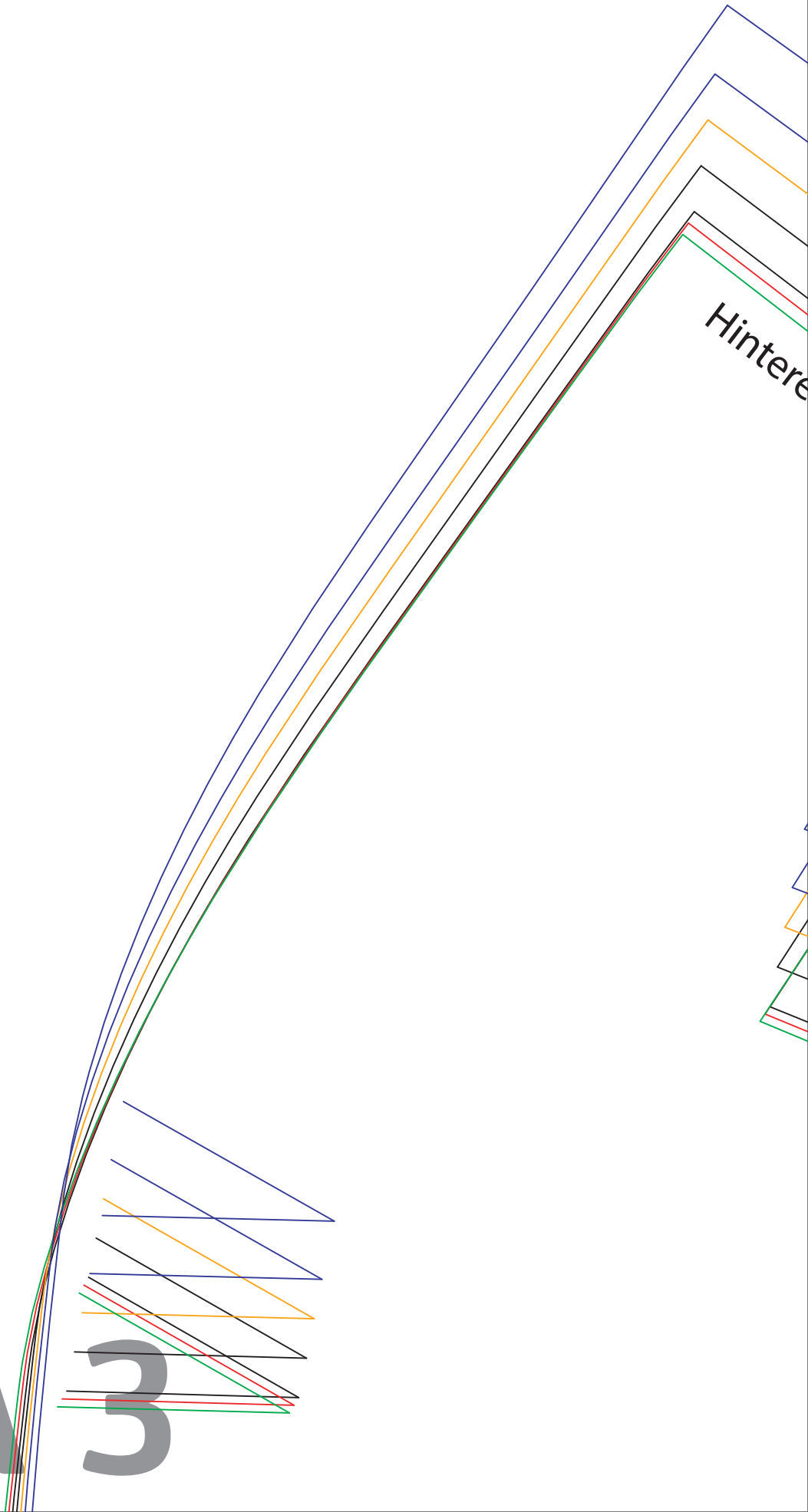
Hintere Mitte



Kontroll-  
kästchen  
5 x 5 cm

A 2

A3



Mitte

XXXL

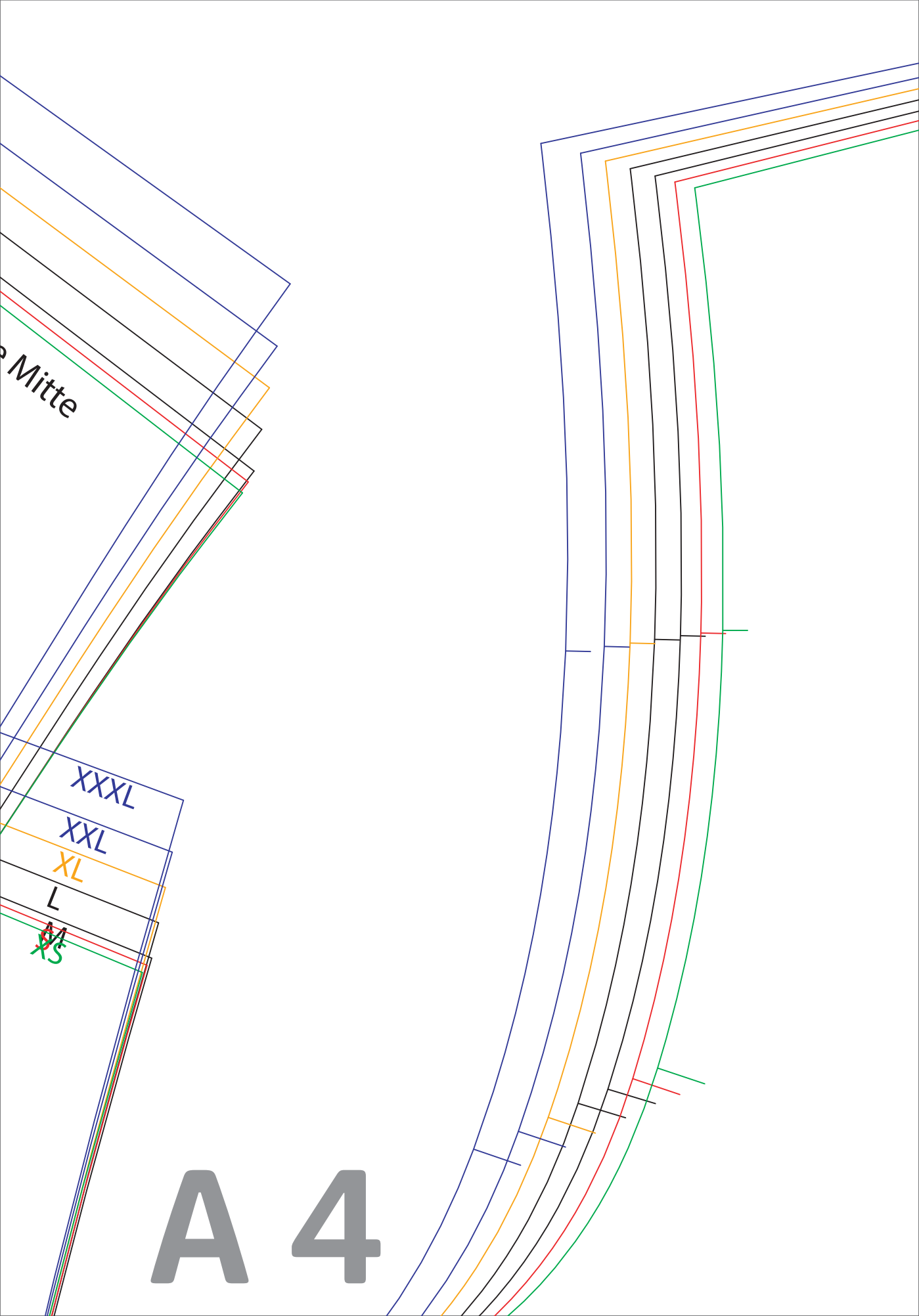
XXL

XL

L

~~M~~  
XS

A 4

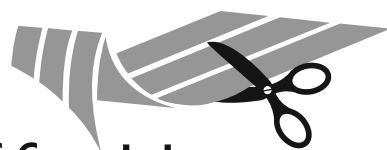


Hintere Mitte / Stoffbruch / Fadenlauf

A 5

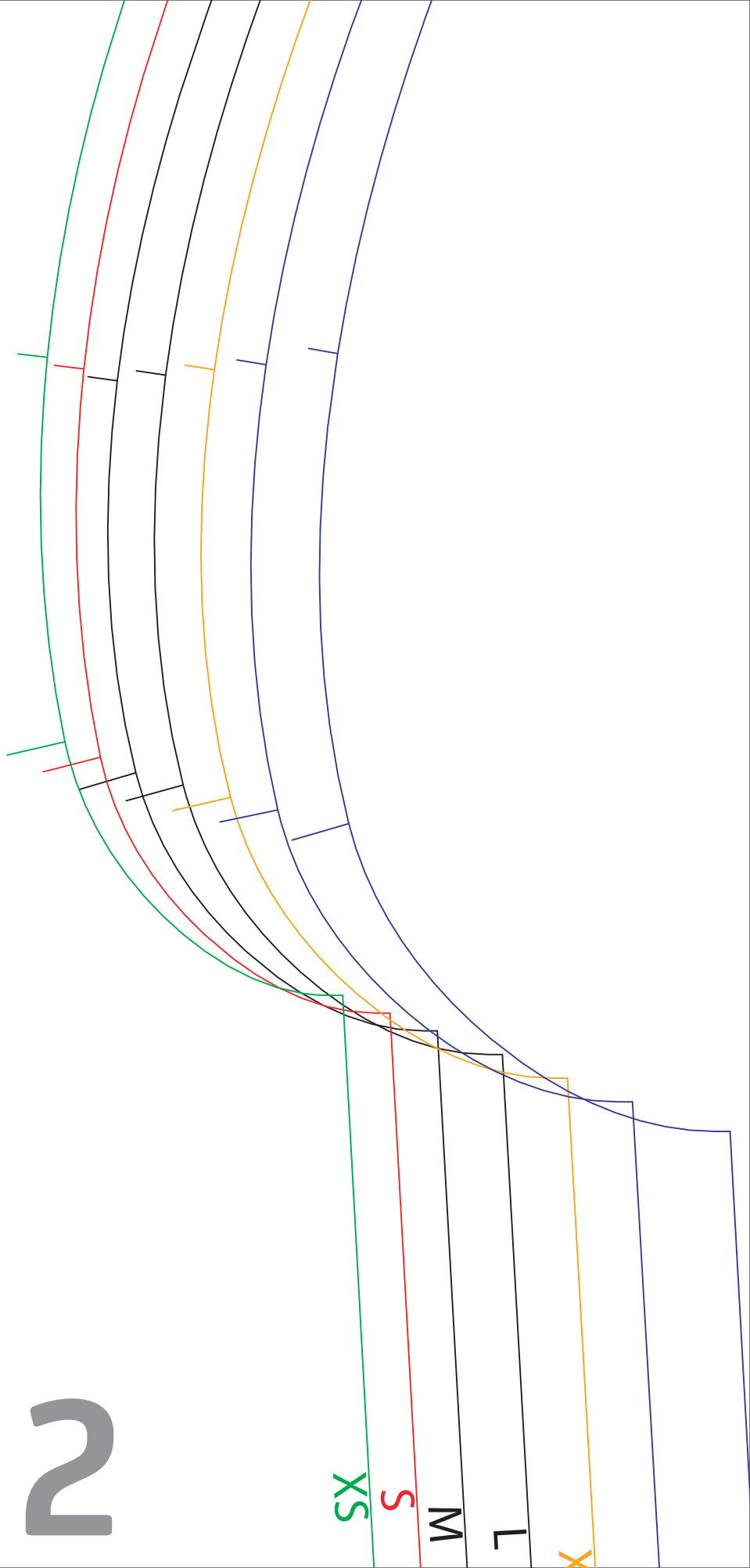


**B 1**



Stoffe Hemmers  
stoffe-hemmers.de

B 2



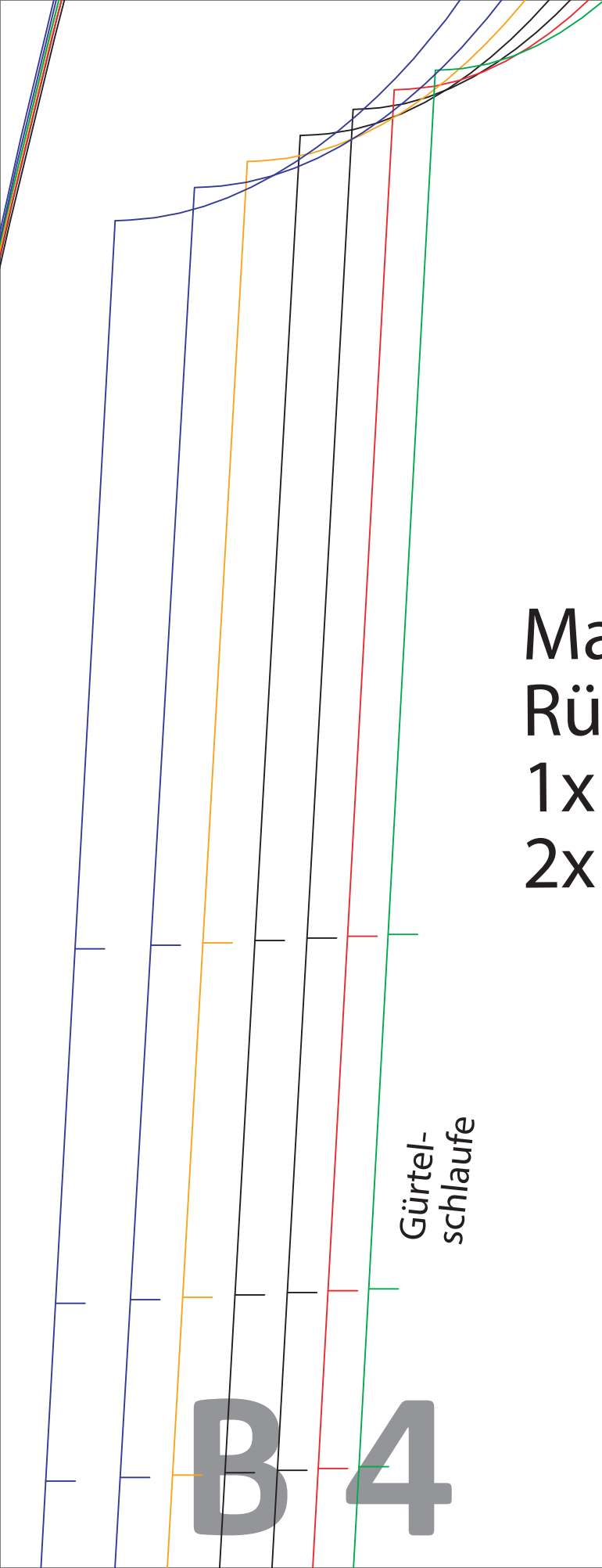
SX  
S  
M  
L  
X



Stoffe Hemmers  
stoffe-hemmers.de

Mantel MONA  
Beleg vorne  
2x gegengleich

**B 3**



Mantel MONA  
Rückenteil  
1x im Stoffbruch (J  
2x gegengleich (la

Gürtel-  
schlaufe

**B**  
**4**



Stoffe Hemmers  
stoffe-hemmers.de

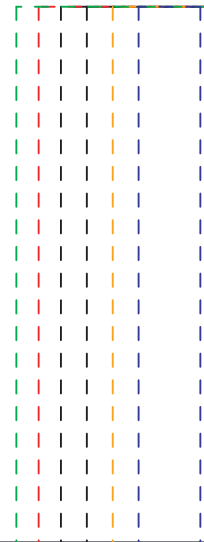
Jacke / Kurzmantel)  
(Langer Mantel mit Schlitz)

**B 5**

# Mantel MONA Vorderteil 2x gegengleich



**C 1**



XXXXL

XXXL

XXL

Gürtel-  
schlaufe

Taschenbeutel

C 2

C 3

XXXXL

XXXL

XXL

L

M

S

XS

Taschenbeutel

Jackenlänge

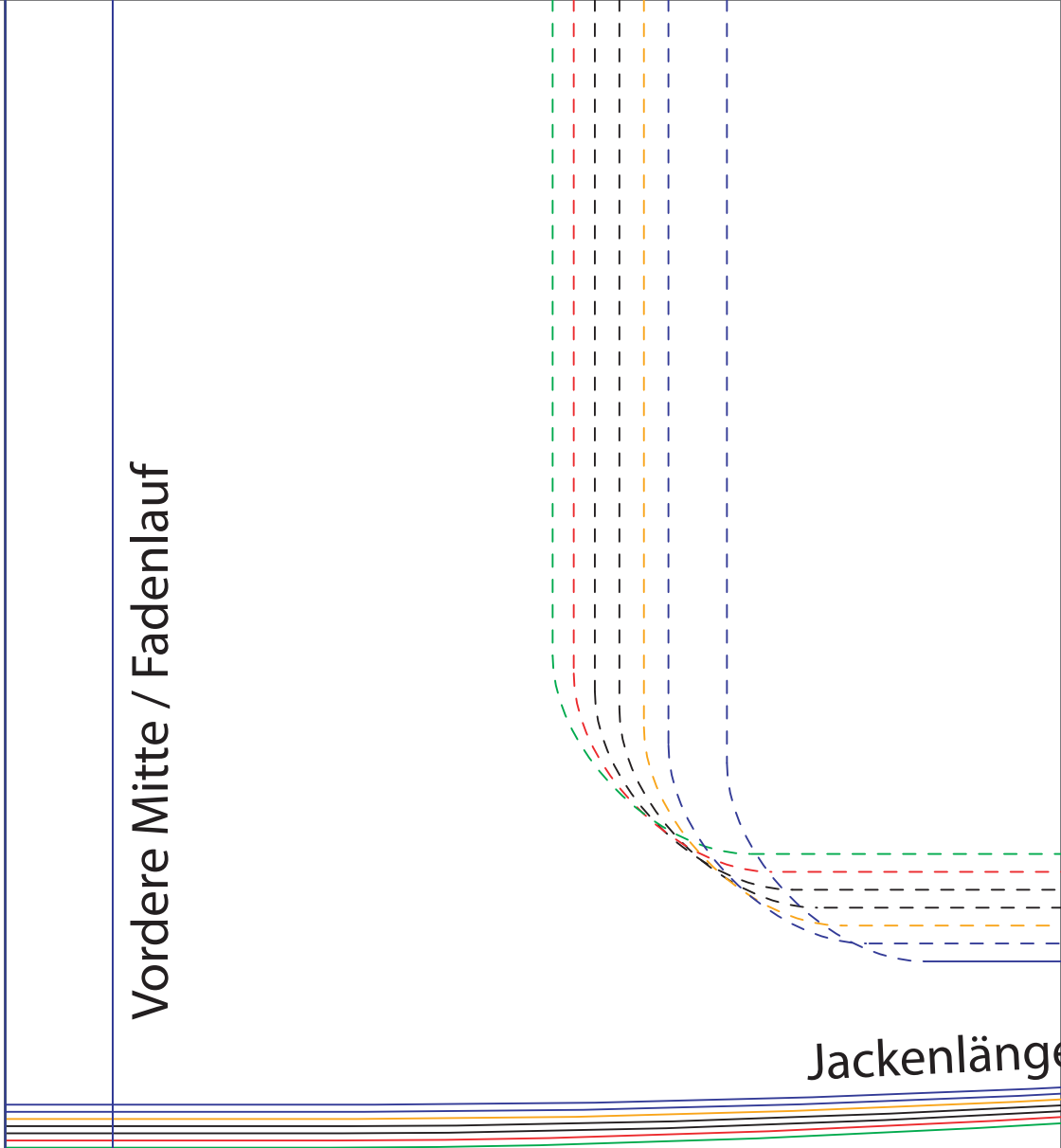
C4

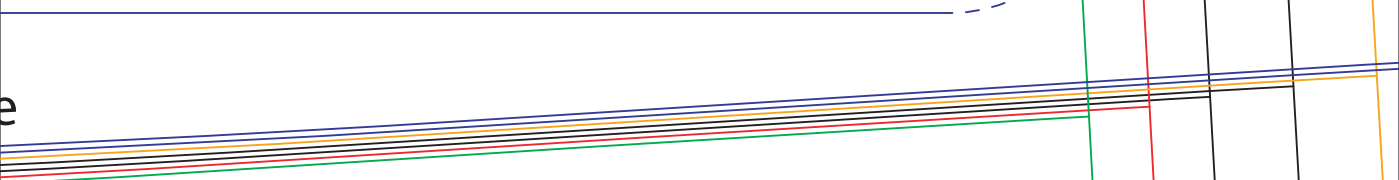
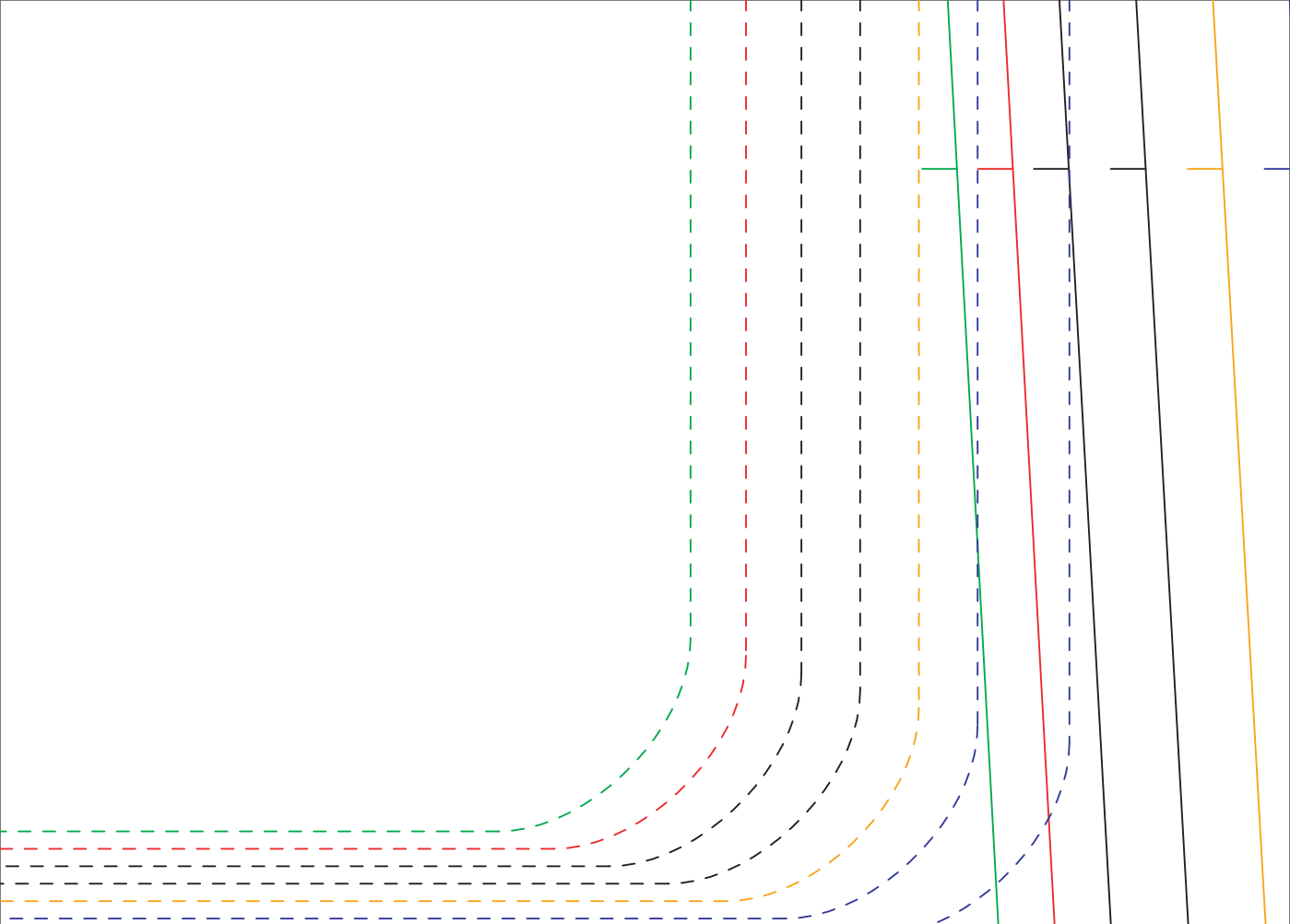
C 5

# D 1

Vordere Mitte / Fadenlauf

Jackenlänge





D 2

D 3

Vordere Mitte / Fadenlauf

Jackenlänge

A series of vertical lines in blue, orange, black, red, and green are positioned on the left side of the page. A horizontal line in the same color sequence crosses the page, intersecting the vertical lines.

Kurzmantellänge

**D 4**

D 5

E 1

ellänge

E 2

Kurzmantellänge

E 3

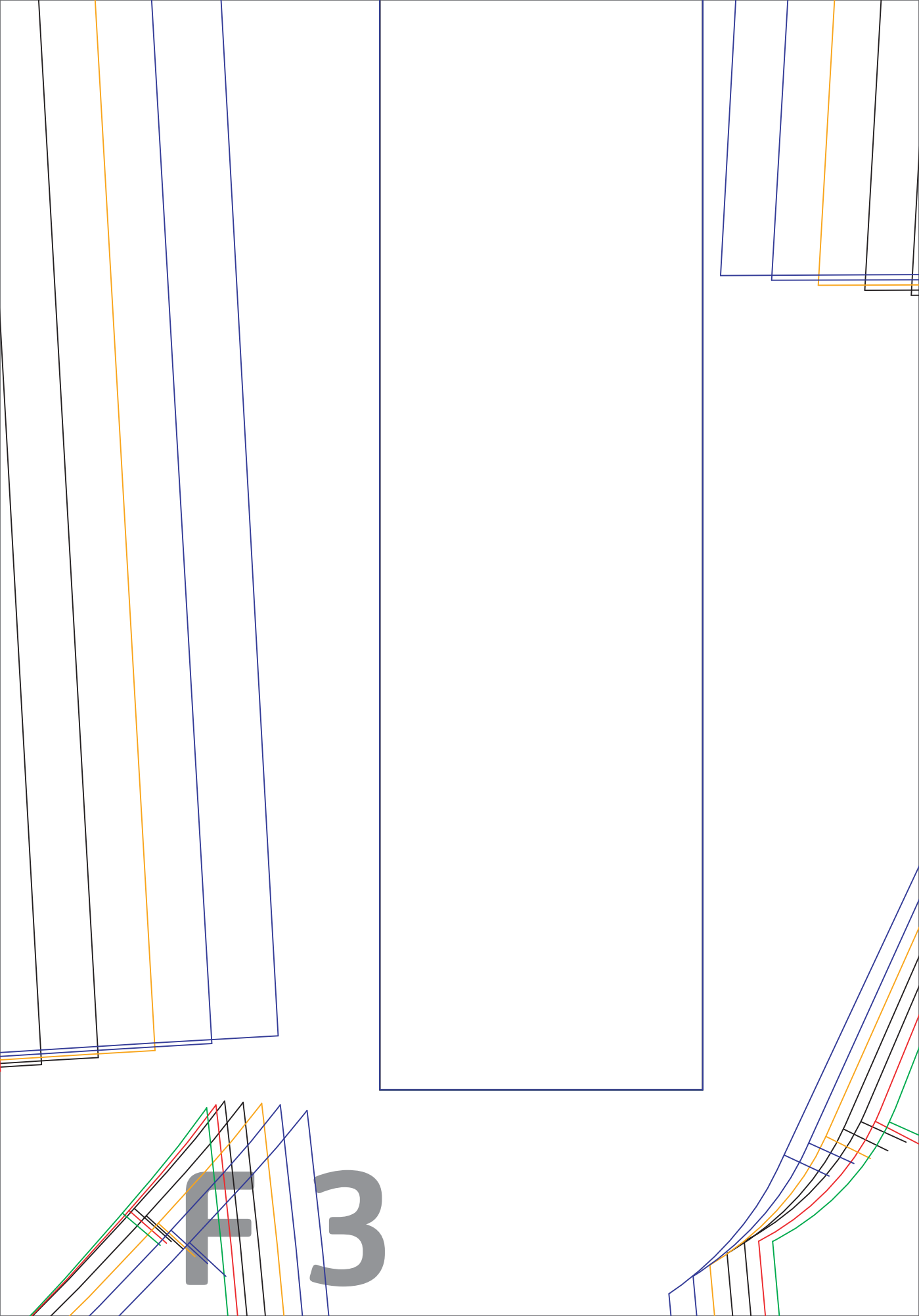


**E 4**

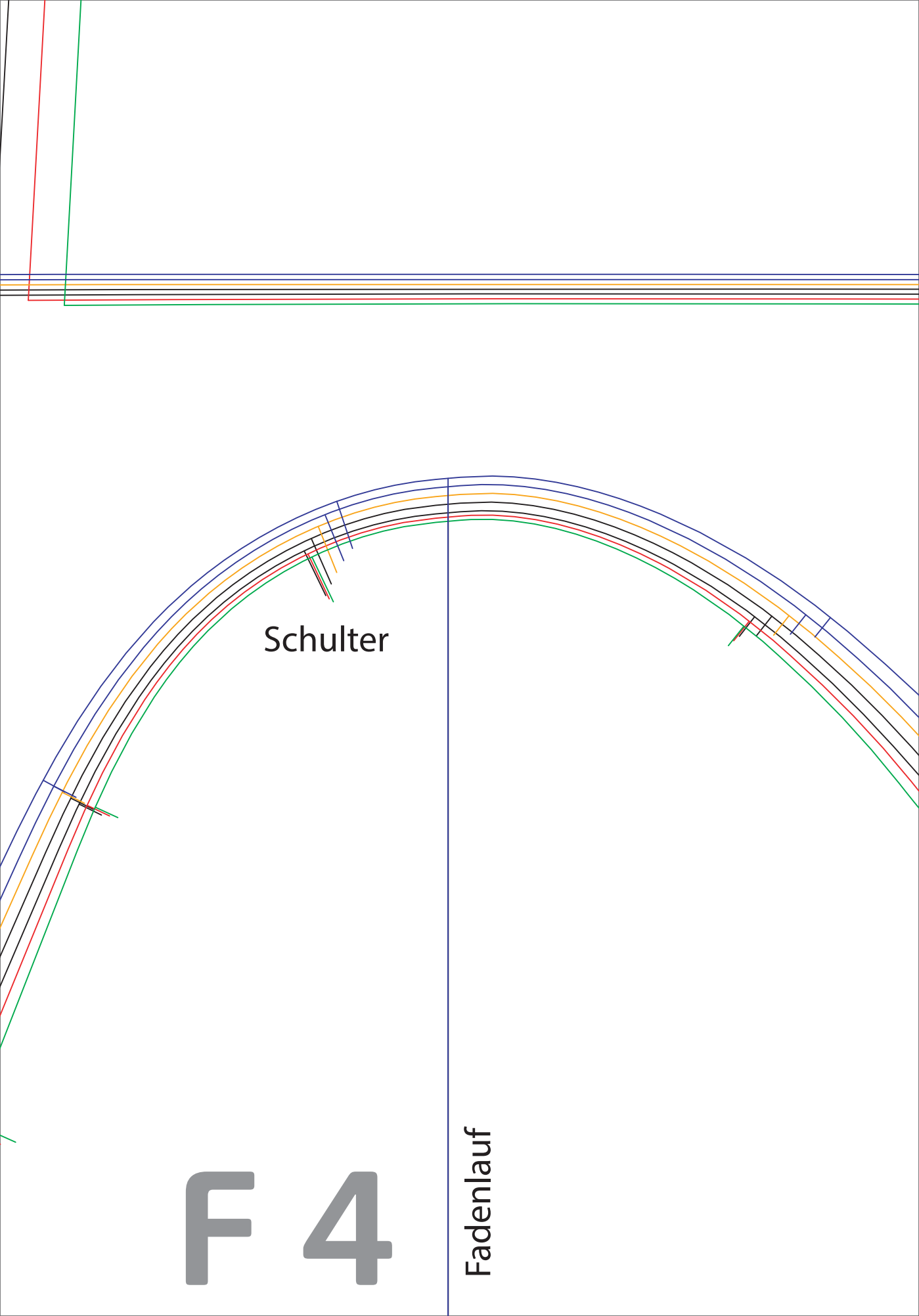
E 5

**F 1**

F 2



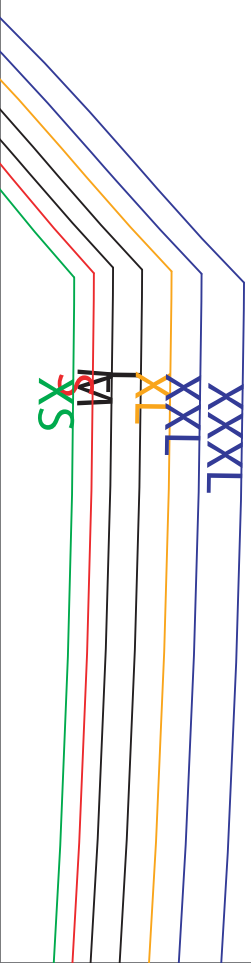
F3



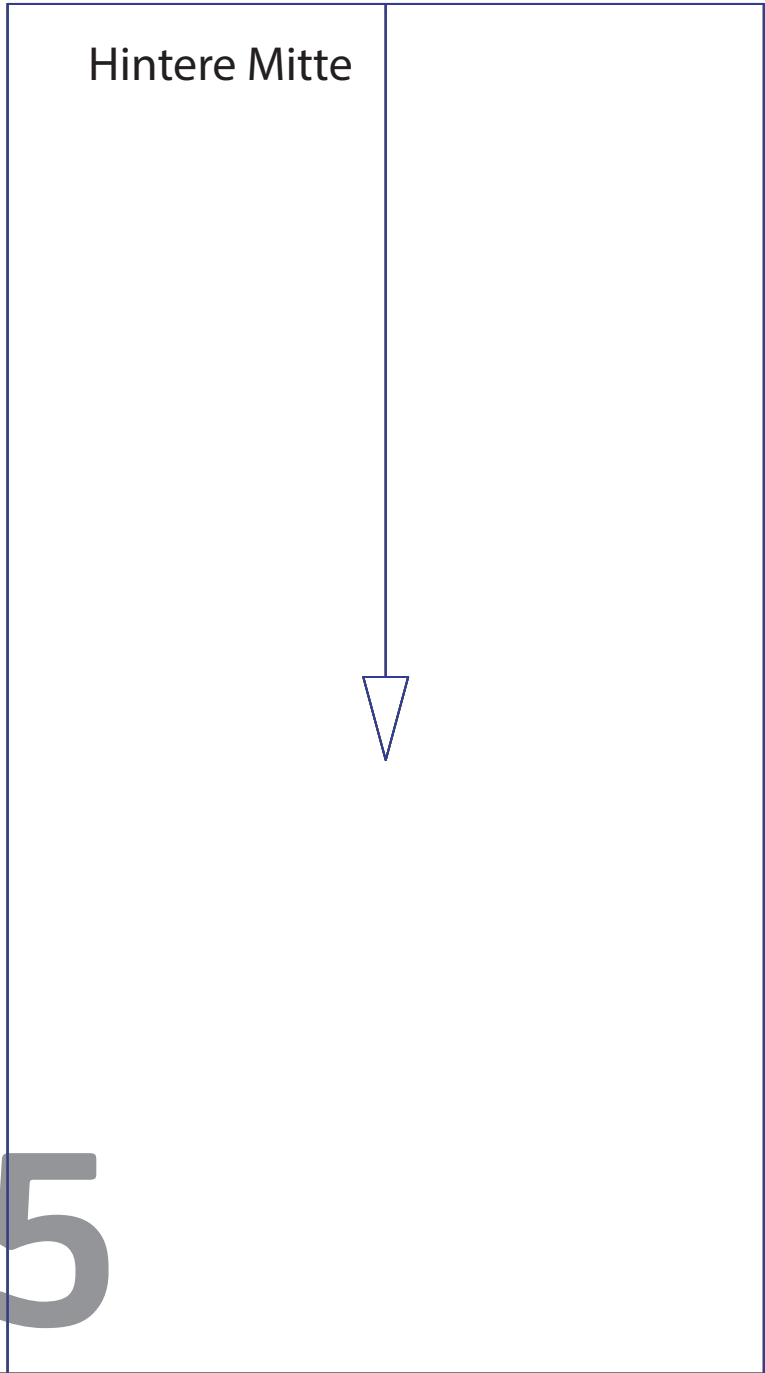
Schulter

Fadenlauf

F 4



**F 5**



Hintere Mitte





XXXL  
XL  
M  
XS

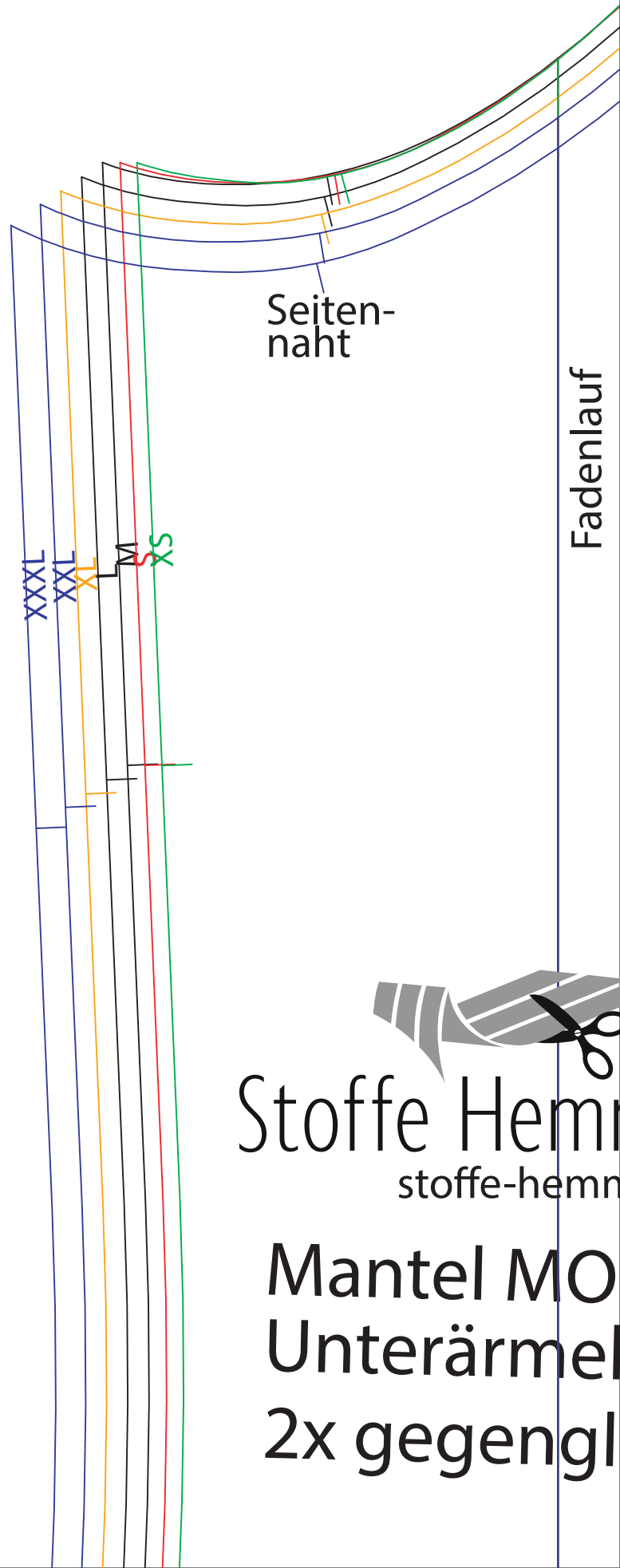


Stoffe Hemmers  
[stoffe-hemmers.de](http://stoffe-hemmers.de)

Mantel MONA  
Taschenbeutel  
4x gegengleich

G 1

# G 2

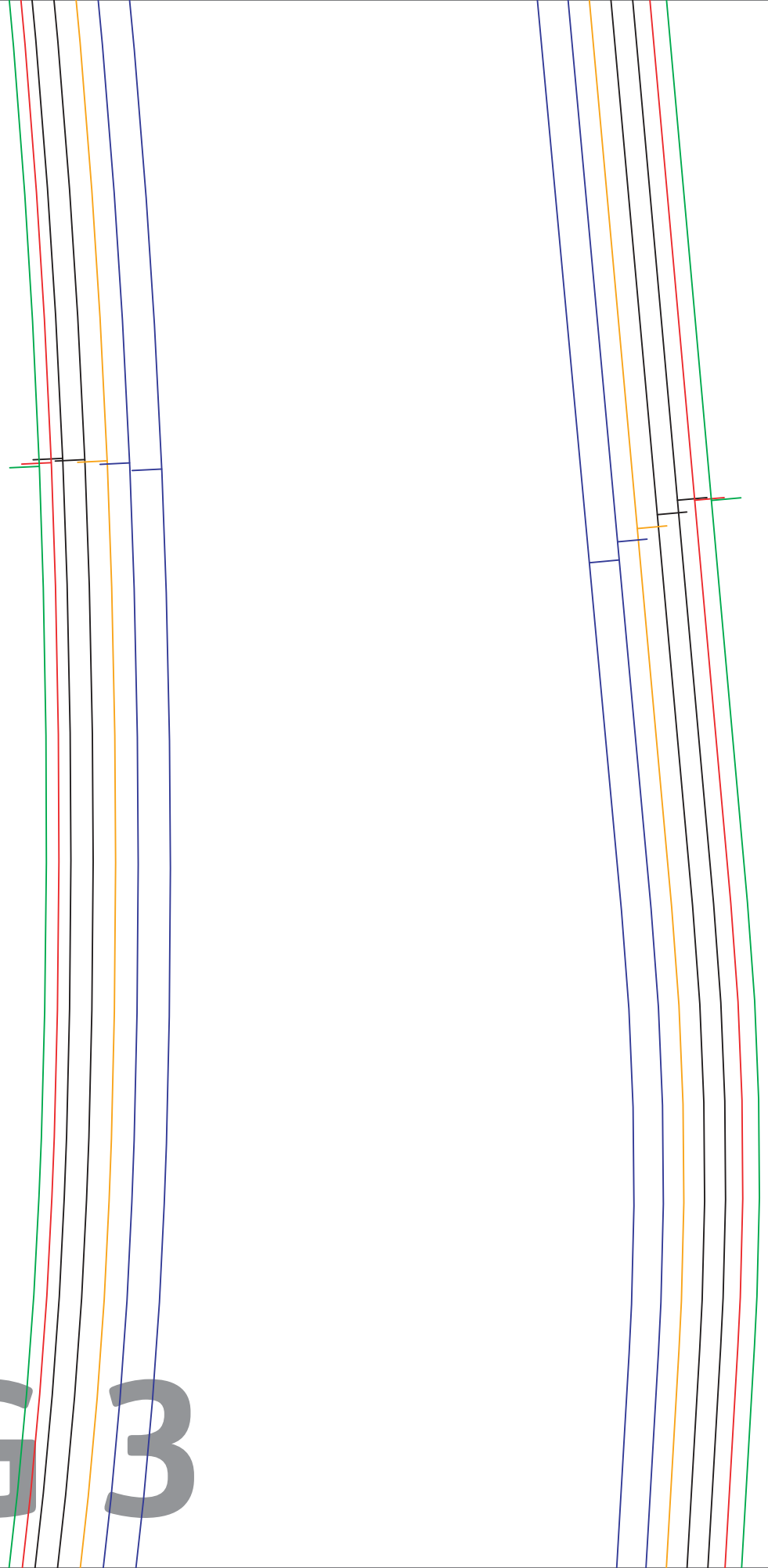


Stoffe Hemm  
stoffe-hemmn

Mantel MO  
Unterärmel  
2x gegengl

5  
mers  
mers.de  
NA  
reich

G 3

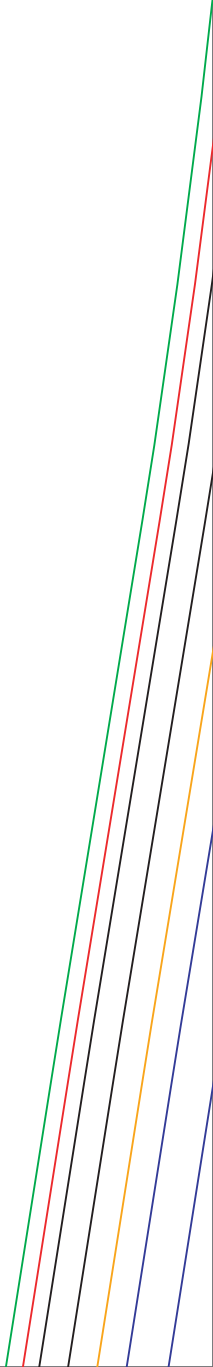




Stoffe Hemmers  
stoffe-hemmers.de

Mantel MONA  
Oberärmel  
2x gegengleich

G 4





Stoffe Hemmers  
stoffe-hemmers.de

Mantel MONA  
Gürtel  
2X

5

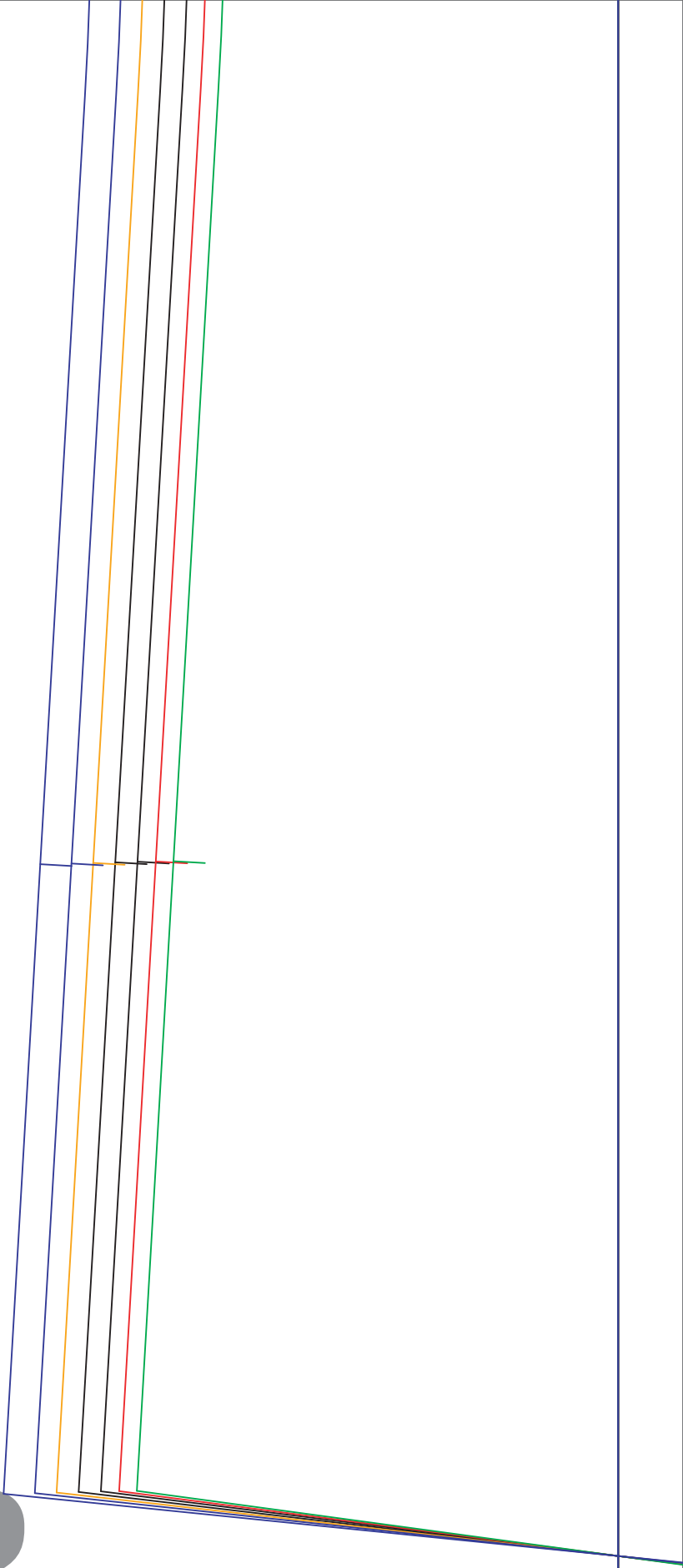
G

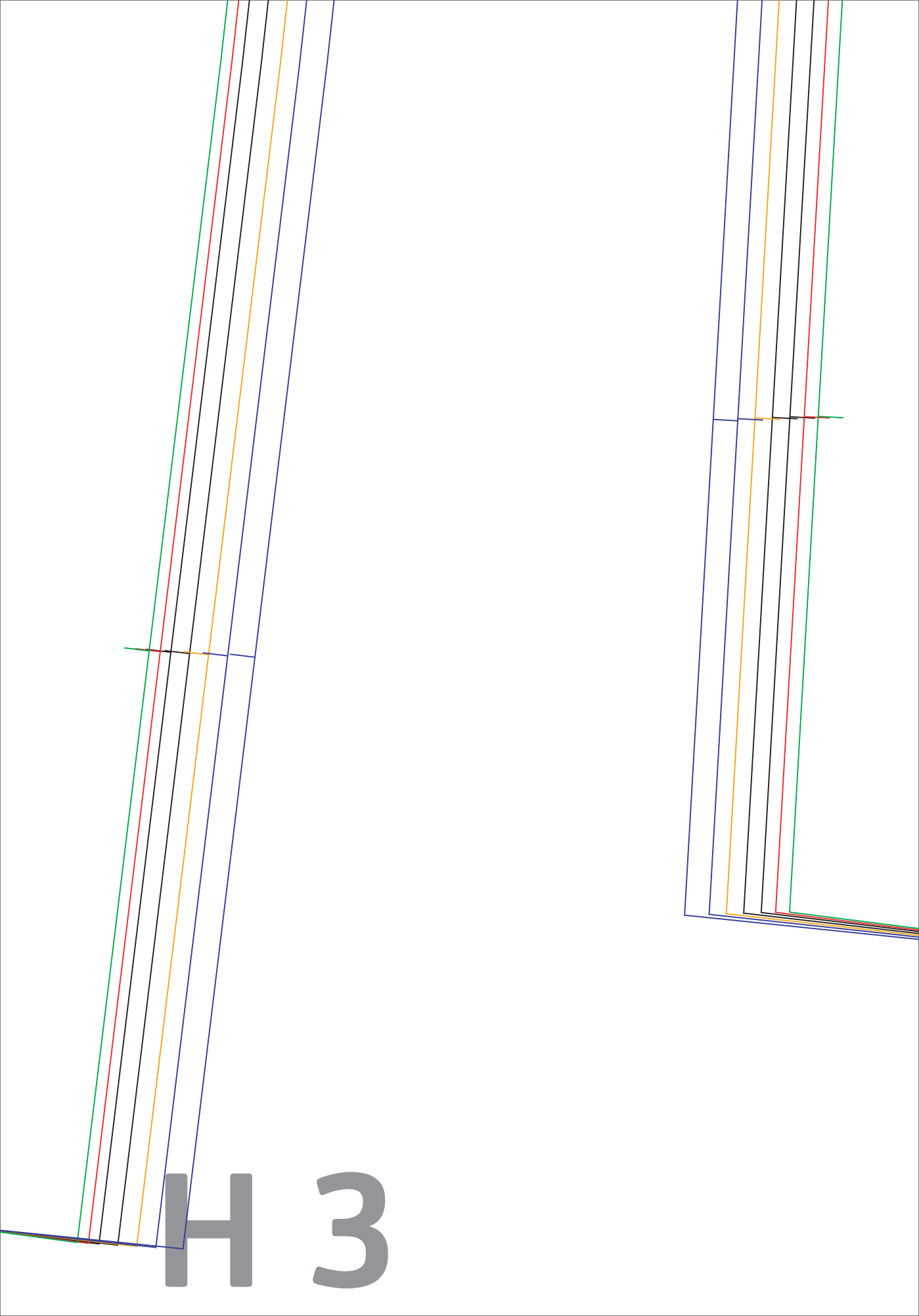
Mantel MONA  
Aufhänger  
1x

Mantel MONA  
Gürtelschlaufe  
2x

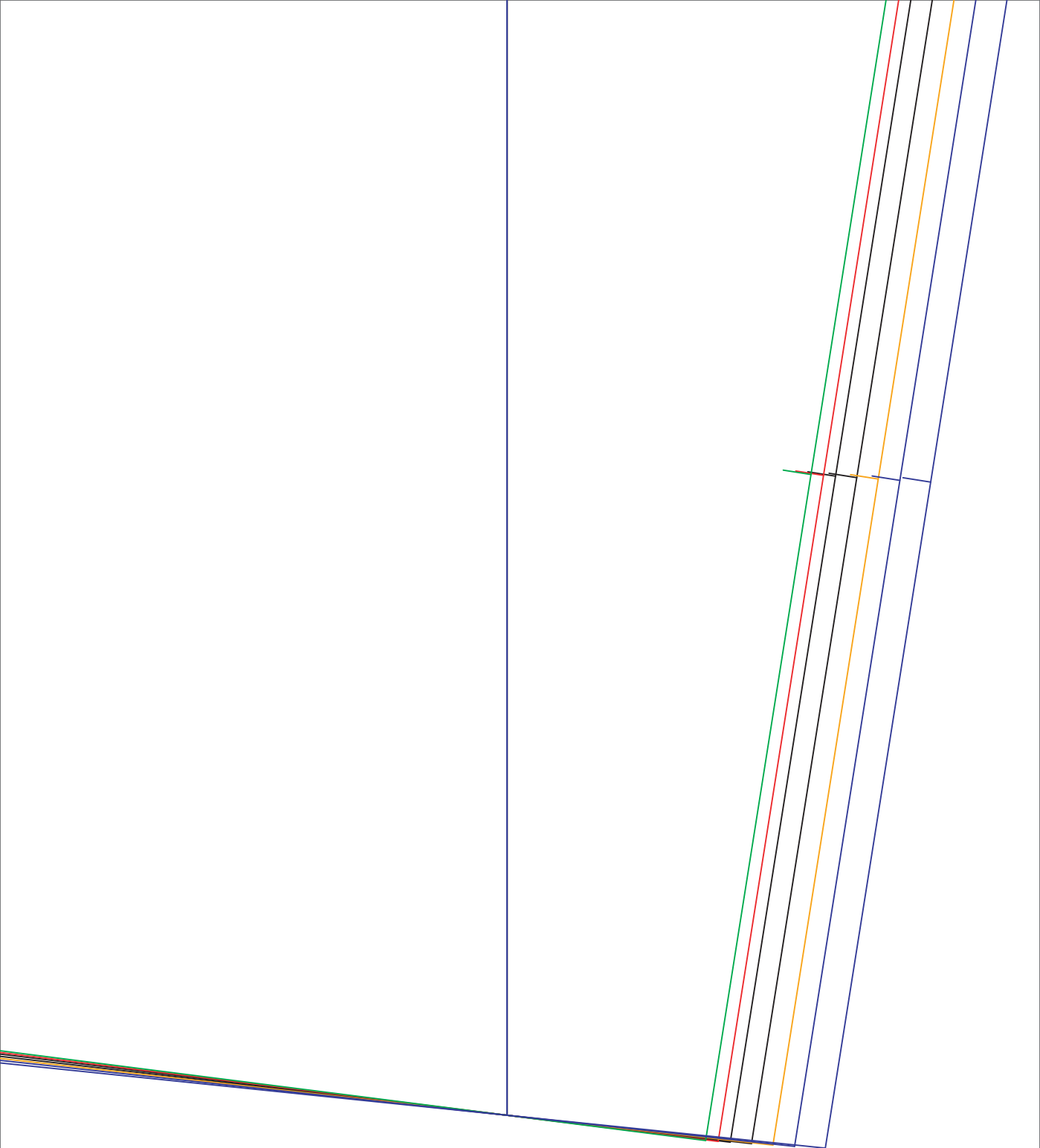
H 1

H 2



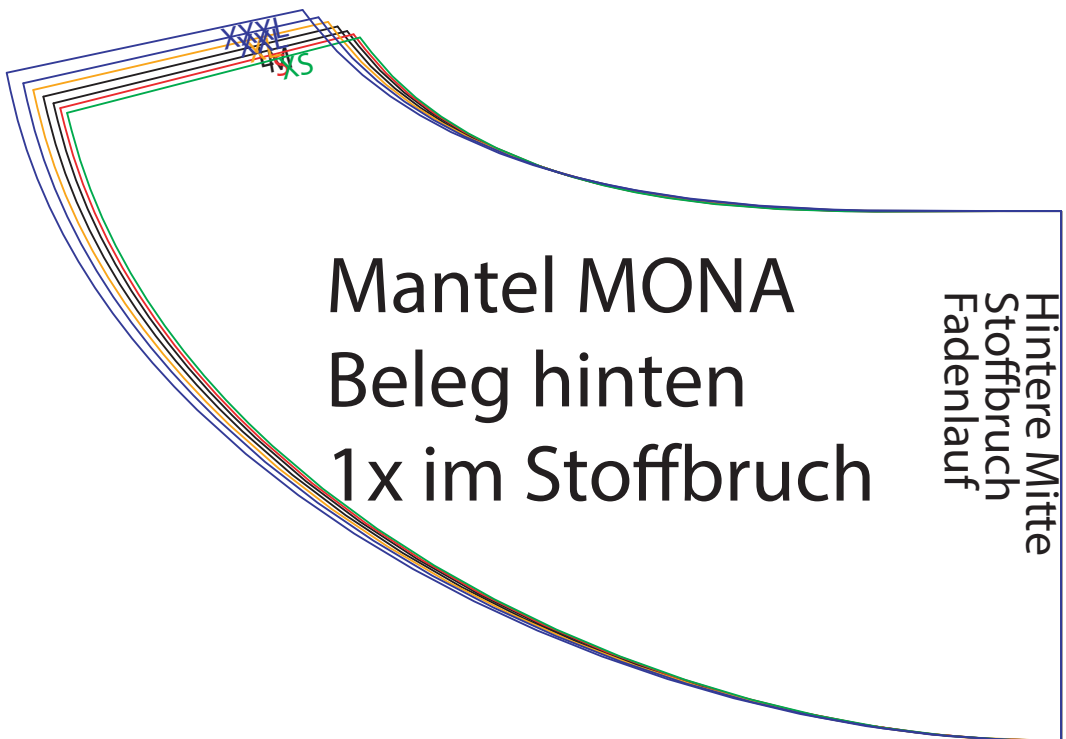


H 3



H 4

H 5



Mantel MONA  
Beleg hinten  
1x im Stoffbruch

Hintere Mitte  
Stoffbruch  
Fadenlauf



Stoffe Hemme  
stoffe-hemmers

Mantel MON  
Tasche  
2x

1 2

ers  
de  
A

Umbruch

SX  
S  
M  
L  
XL  
XXL  
XXX  
XXXL

13



SX

S

W

1

1X

1XX

1XXX

15