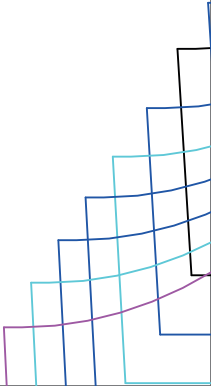
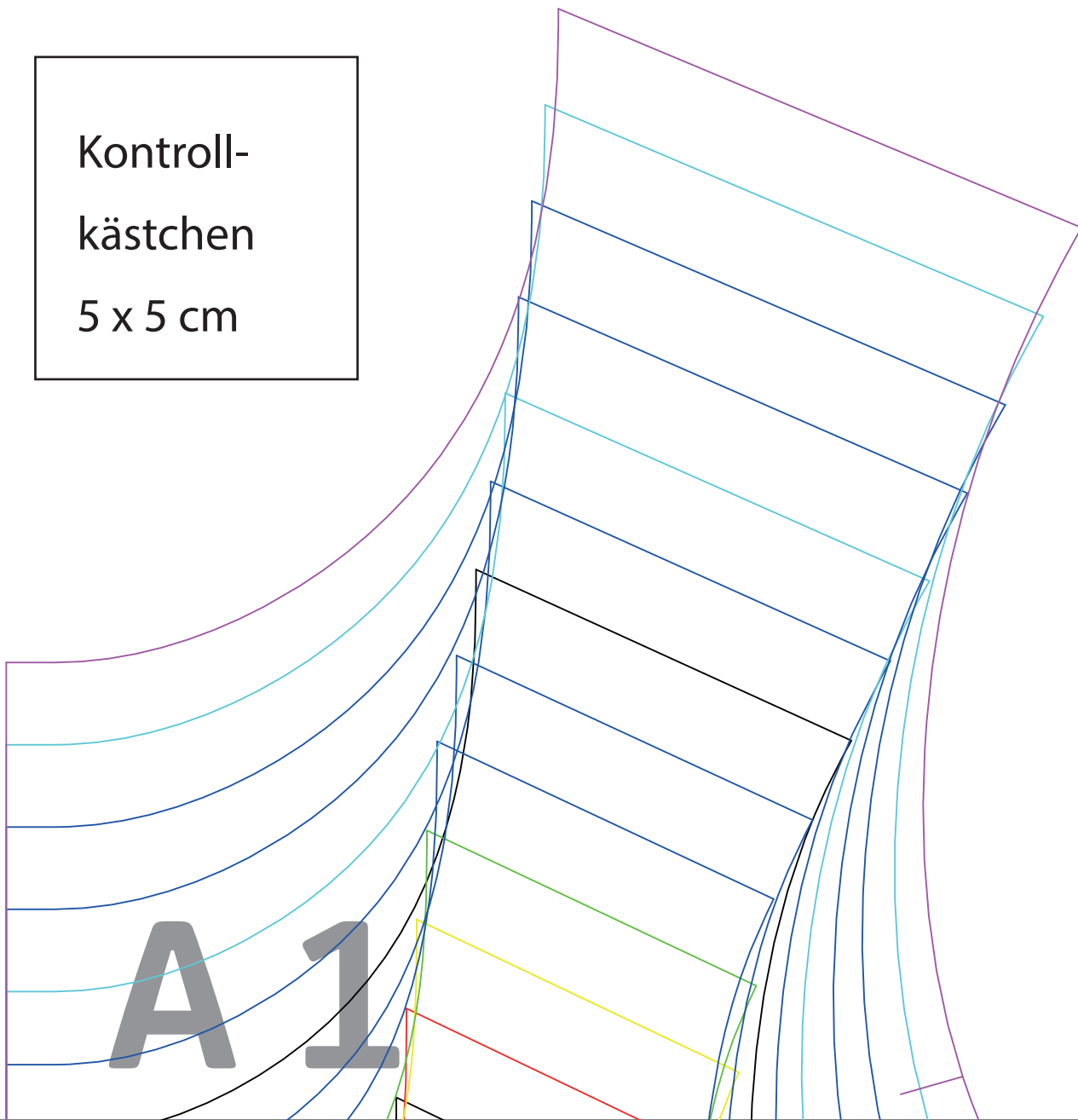


Kontroll-
kästchen
5 x 5 cm

A 1



Maschenlauf

Kleid HANNAH
Ärmel
2x gegengleich

Stoffe Hemmers



A 2

92

98

104

110

116

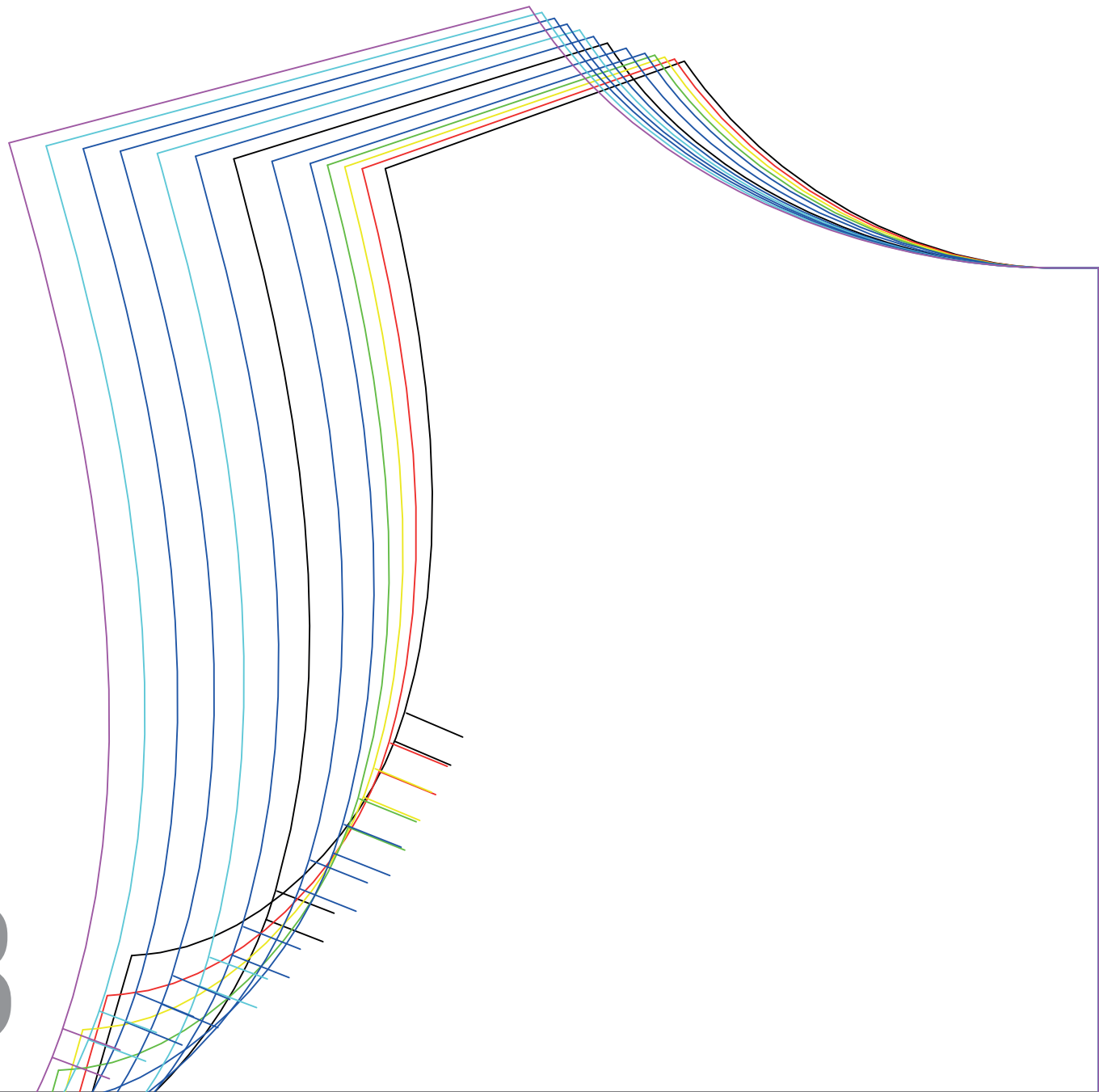
122

128

134

140

A 3





Kleid HANNAH
Vorderteil
1x im Stoffbruch

B 1

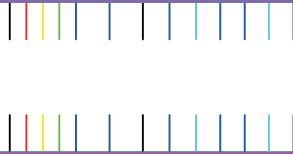
146
152
158
164

Vordere Mitte
Stoffbruch
Maschinenlauf



Stoffe Hemmers

Kleid HANNAH
Halsbündchen
1x im Stoffbruch



164
158
152
146
140
134
128
122
116
110
104
98
92

B 2

© STOFFE HEMMERS 2022

Alle Rechte an dieser Anleitung liegen bei Stoffe Brünink & Hemmers GmbH.
Das E-Book darf nur für den privaten Gebrauch verwendet werden. Es ist nicht
gestattet das E-Book für die Produktion von Verkaufsartikeln zu verwenden. Das
Kopieren und die Weitergabe der Anleitung sowie die Massenproduktion sind
nicht erlaubt.

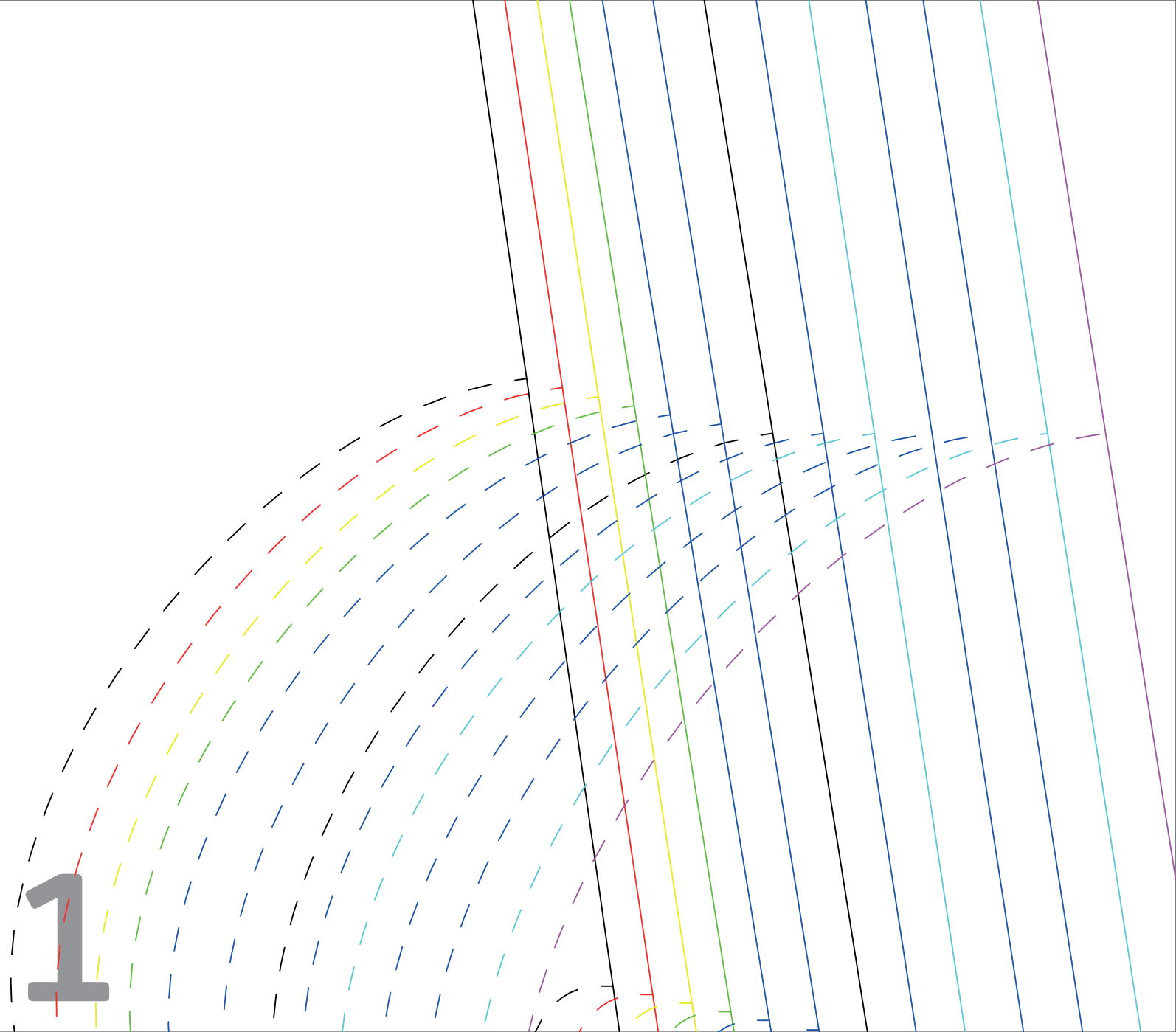
Kleid HANNAH Rückenteil 1x im Stoffbruch



B 3

Vordere Mitte / Stoffbruch / Maschenlauf

C



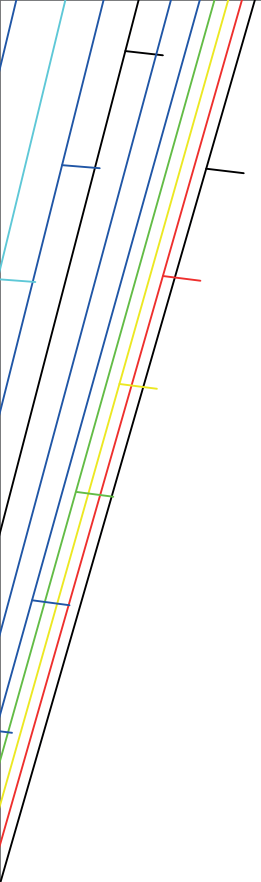
Kleid HANNAH
Taschenbeutel
4x gegengleich



Stoffe Hemmers
stoffe-hemmers.de

928
134
140
146
152
158
164

C 2



Stoffe Hemmers

stoffe-hemmers.de

C 3



Stoffe Hemmers

stoffe-hemmers.de

D 1

92

The background features a series of thin, curved lines in various colors including purple, blue, cyan, green, yellow, and red. These lines are mostly oriented vertically and curve towards the right side of the page. The overall effect is a dynamic, abstract pattern.

D 2

92

98

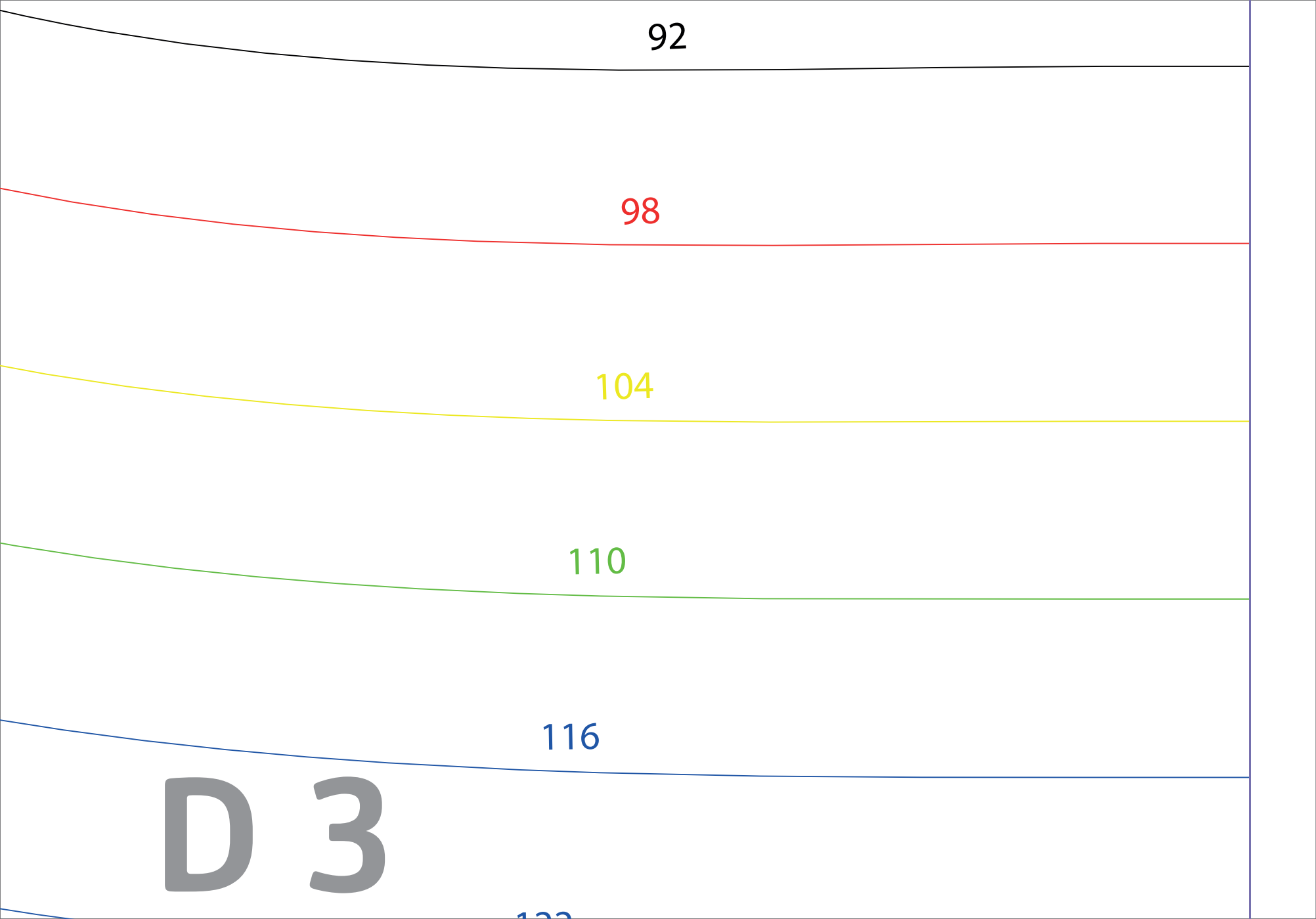
104

110

116

D 3

122



E 1

98

104

110

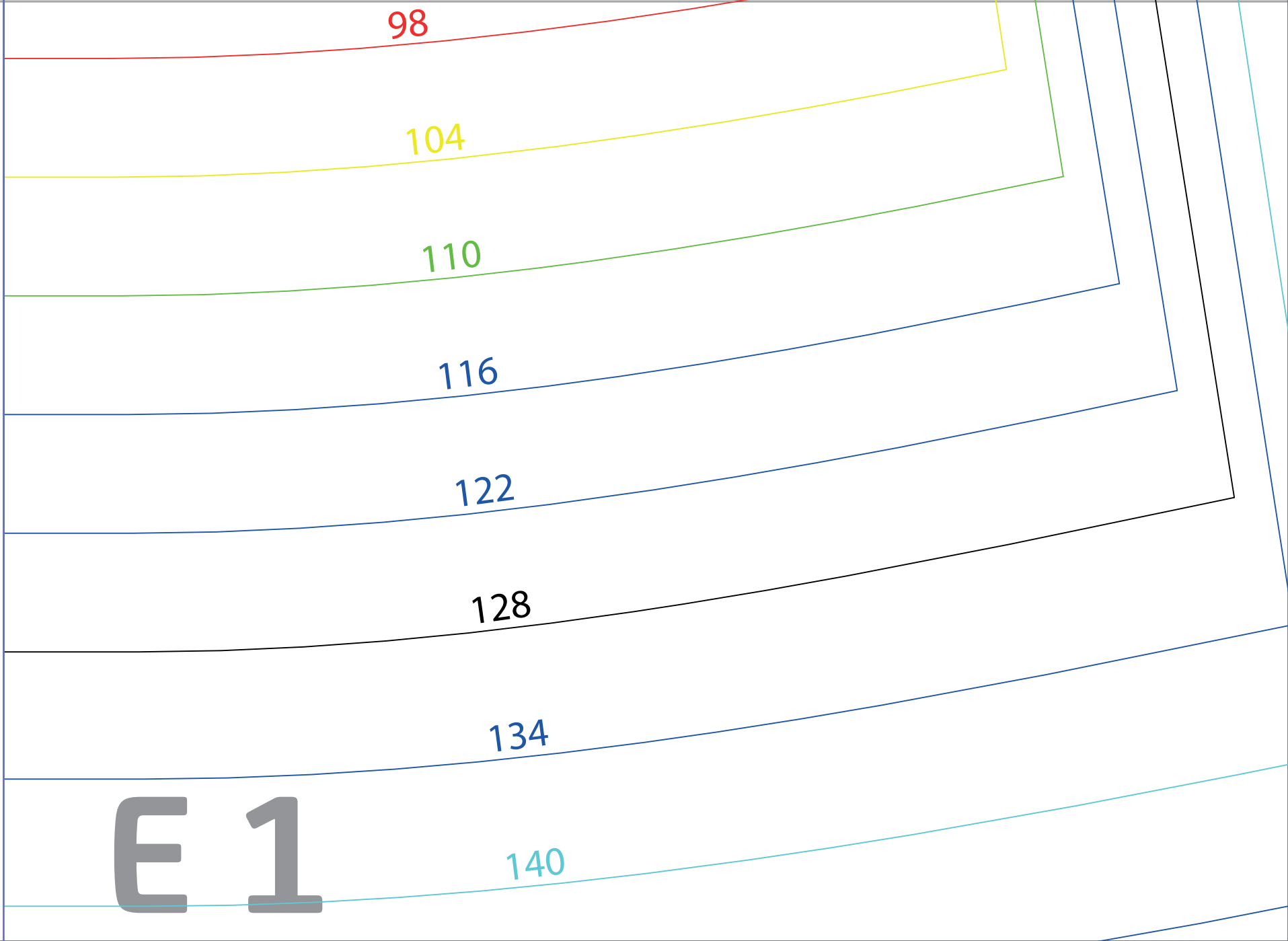
116

122

128

134

140



The background features several overlapping, semi-transparent geometric shapes and lines in shades of blue, teal, and purple. These elements are arranged in a way that creates a sense of depth and movement, with some lines appearing to recede into the distance. The overall aesthetic is clean and modern.

E 2

122

128

134

140

146

E 3



146

152

158

164

F 1

The image features several overlapping, semi-transparent geometric shapes in the upper half. On the left, there are three nested, roughly rectangular shapes in shades of blue, teal, and purple. On the right, there are two larger, curved shapes, also in shades of blue and purple, that appear to be part of a larger, more complex geometric structure.

F 2

152

158

164

F 3