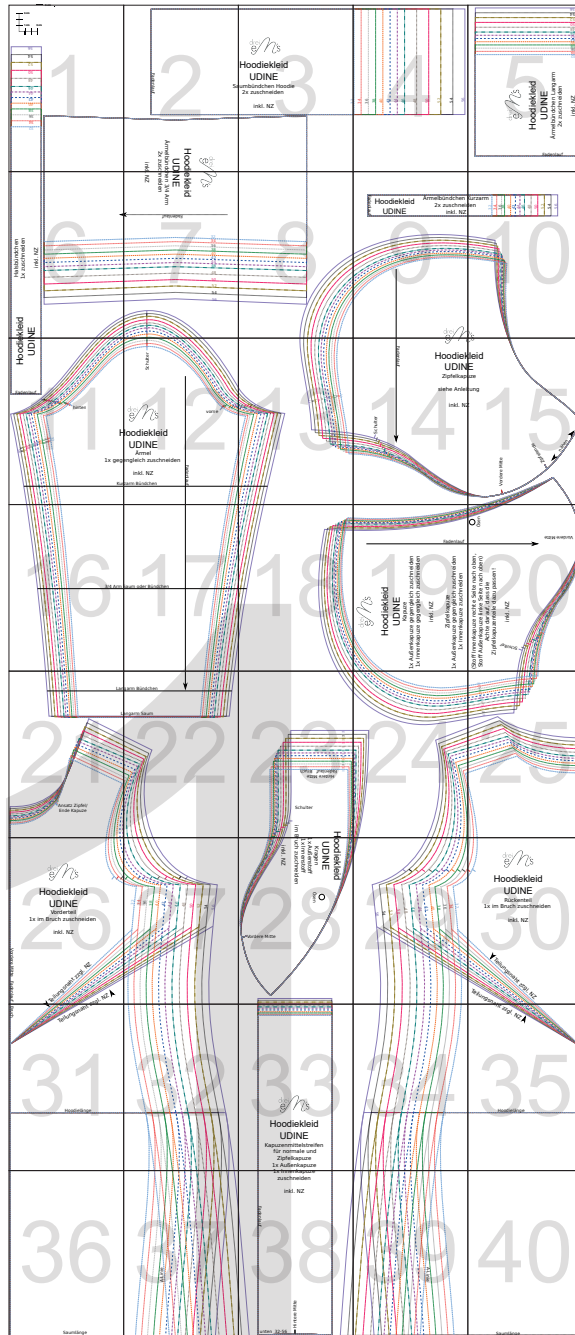
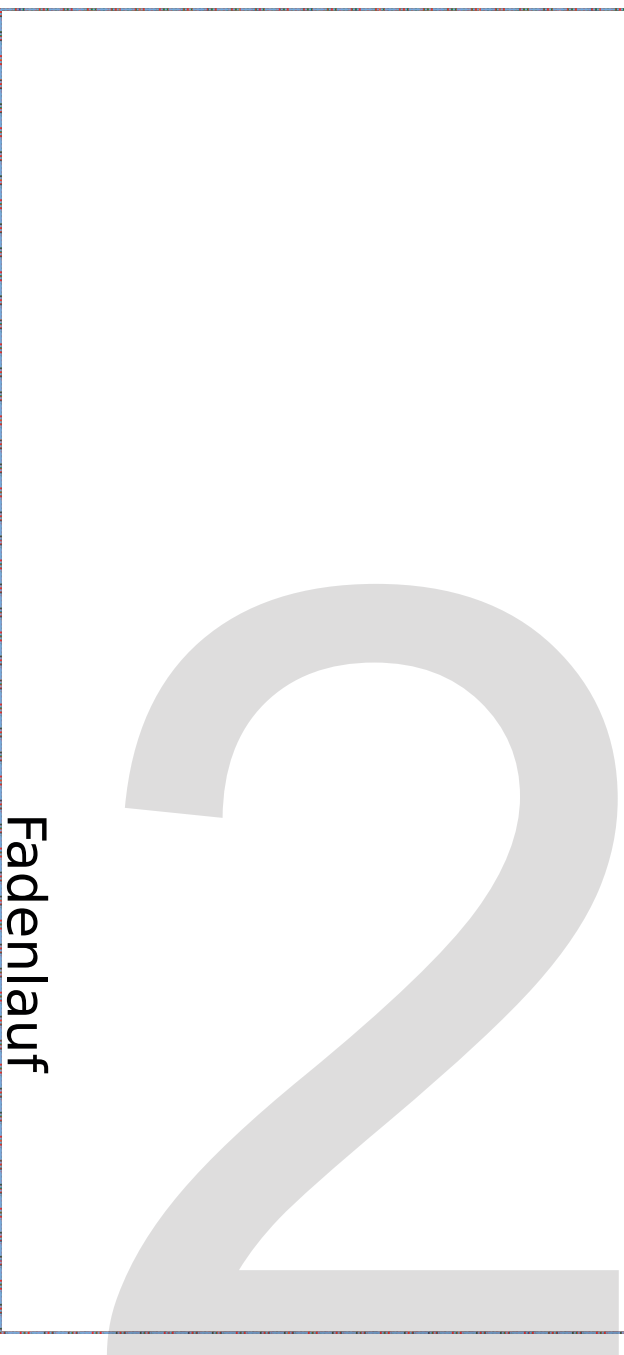


56
54
52
50
48
46
44
42
40
38
36
34
32

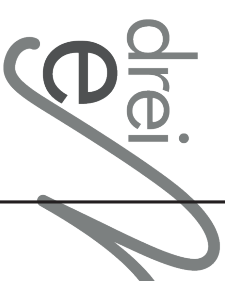


T

Saur
2



Fadenlauf



Hoodie

UDIN

Ärmelbündche
2X zuschn

inkl. N

drei
e M's

Hoodiekleid

UDINE

Saumbündchen Hoodie
2x zuschneiden

inkl. NZ

32

34

36

38

40

42

44

46

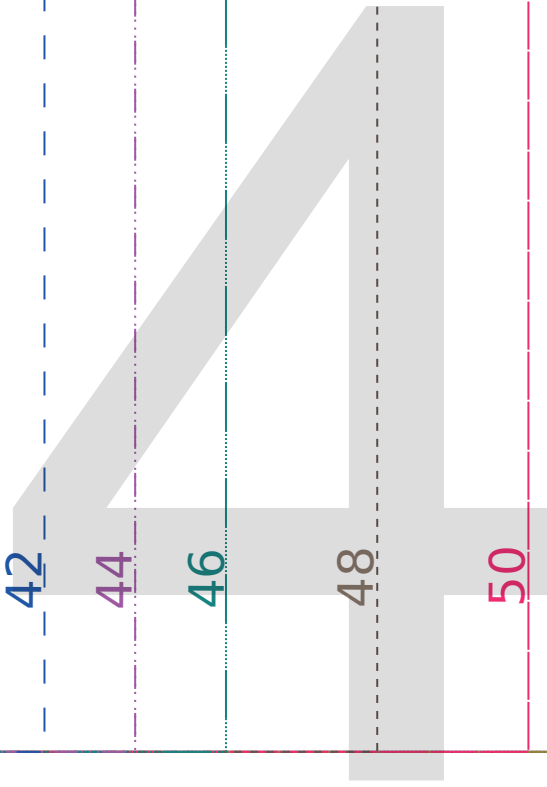
48

50

52

54

56



drei
eN's

Hoodiekleid

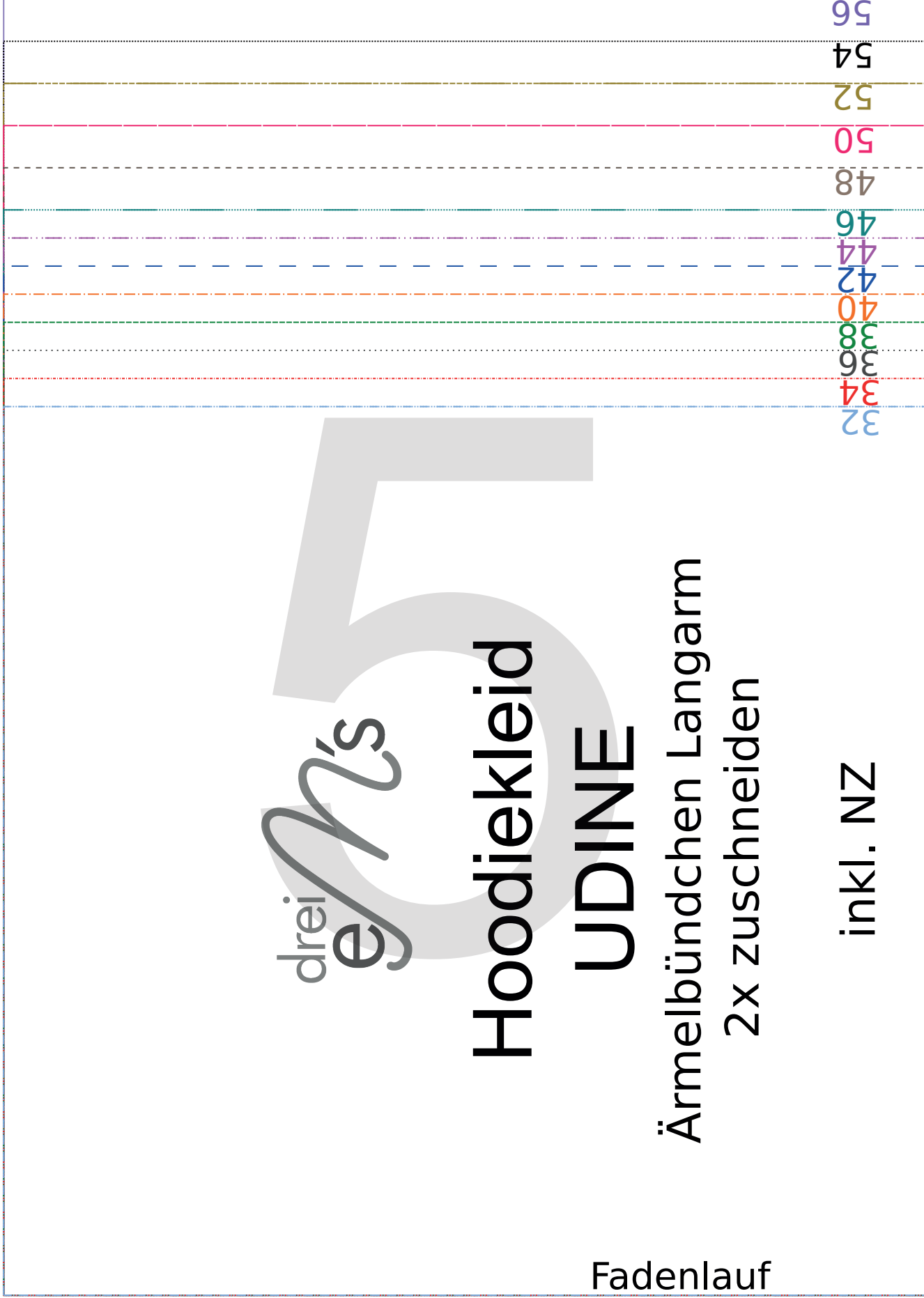
UDINE

Ärmelbündchen Langarm

2x zuschneiden

inkl. NZ

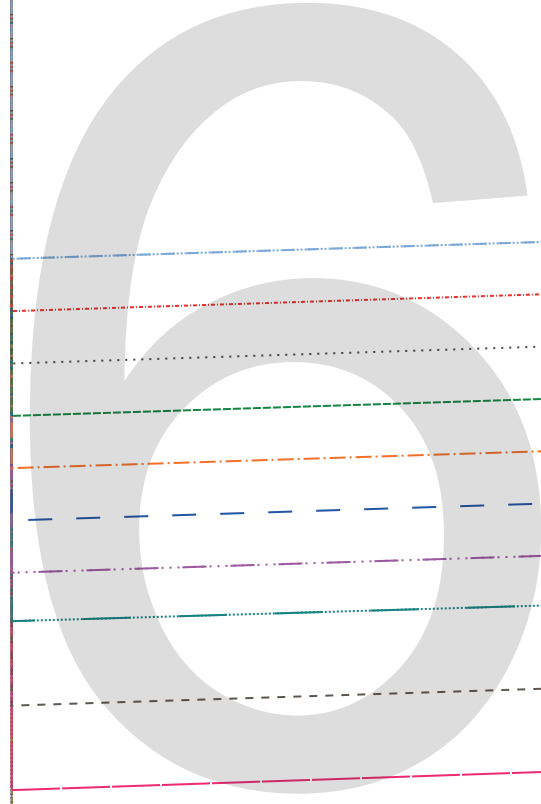
Fadenlauf



Bliekleid DINE

Halsbündchen
1x zuschneiden

inkl. NZ



Miss

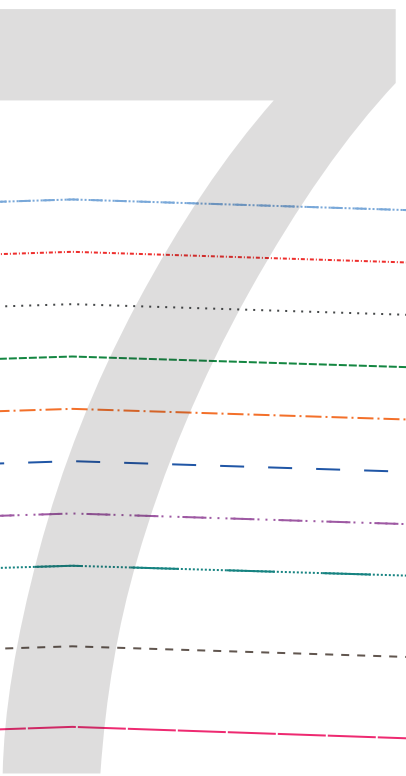
diekleid

DINE

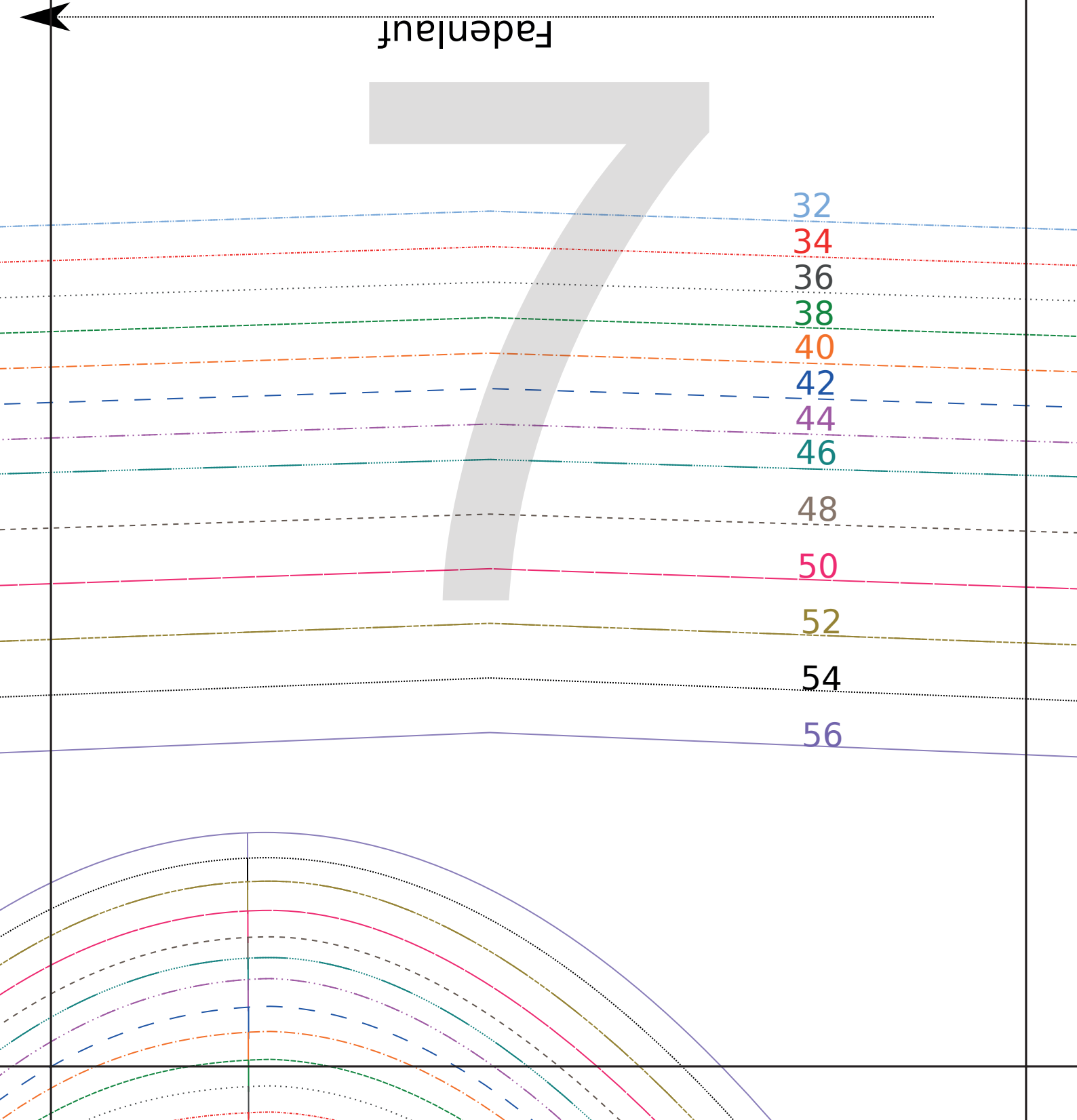
schneiden
3/4 Arm

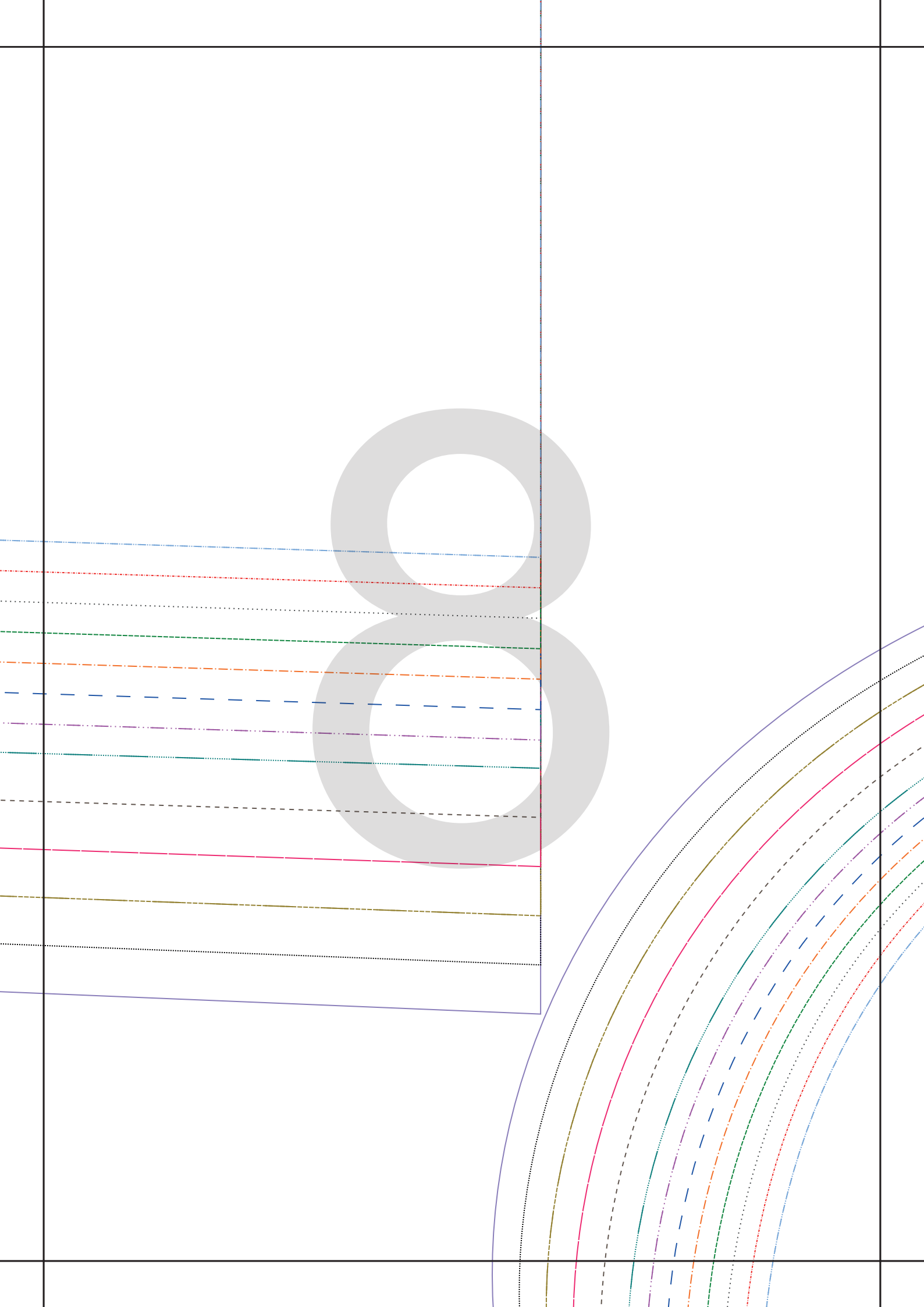
inkl. NZ

Fadenlauf



- 32
- 34
- 36
- 38
- 40
- 42
- 44
- 46
- 48
- 50
- 52
- 54
- 56

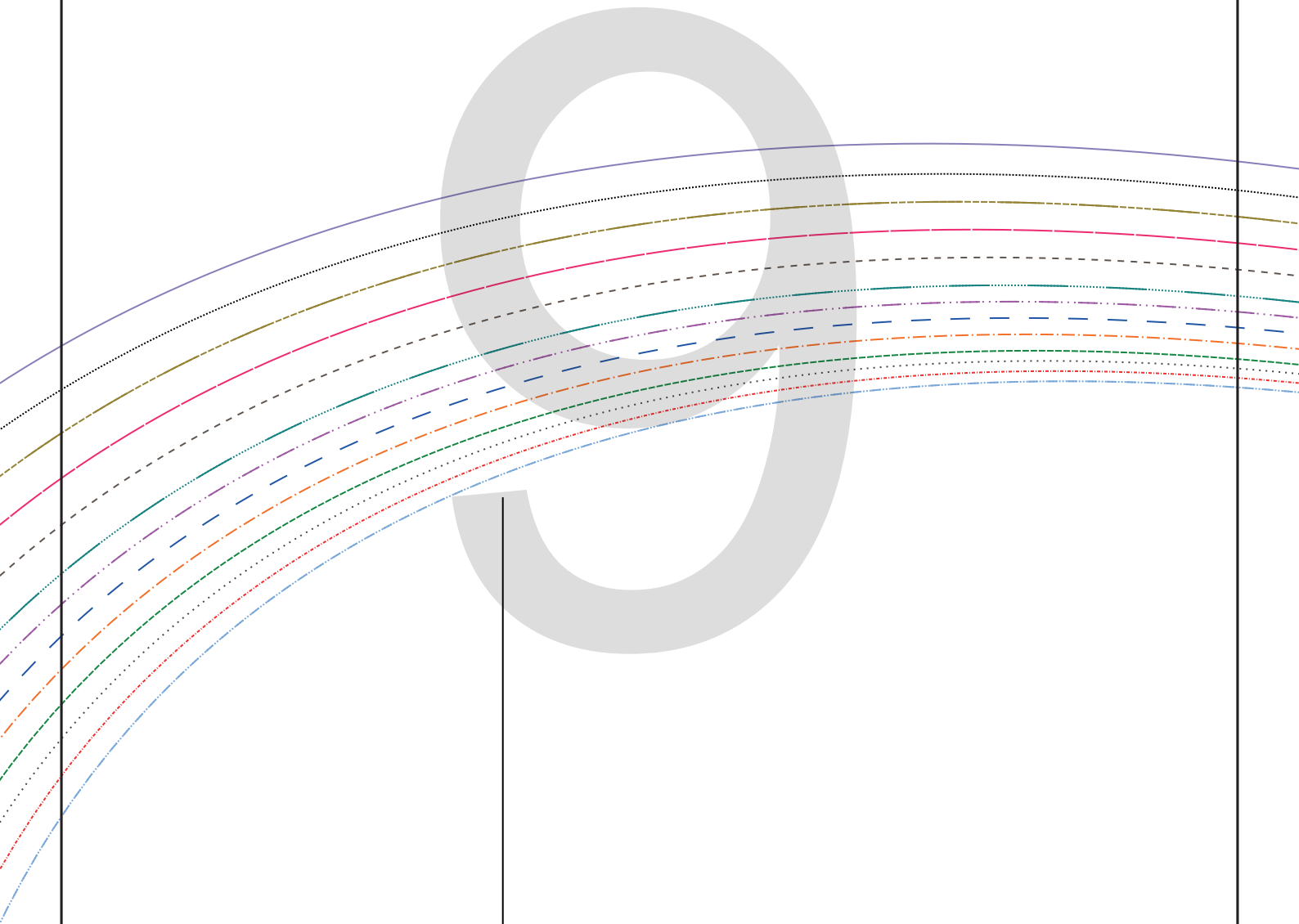




Fadenlauf

Hoodiekleid UDINE

Ärmelbündchen Ku
2x zuschneiden
inkl. NZ



n Kurzarm
eiden
IZ

32

34

36

38

40

42

44

46

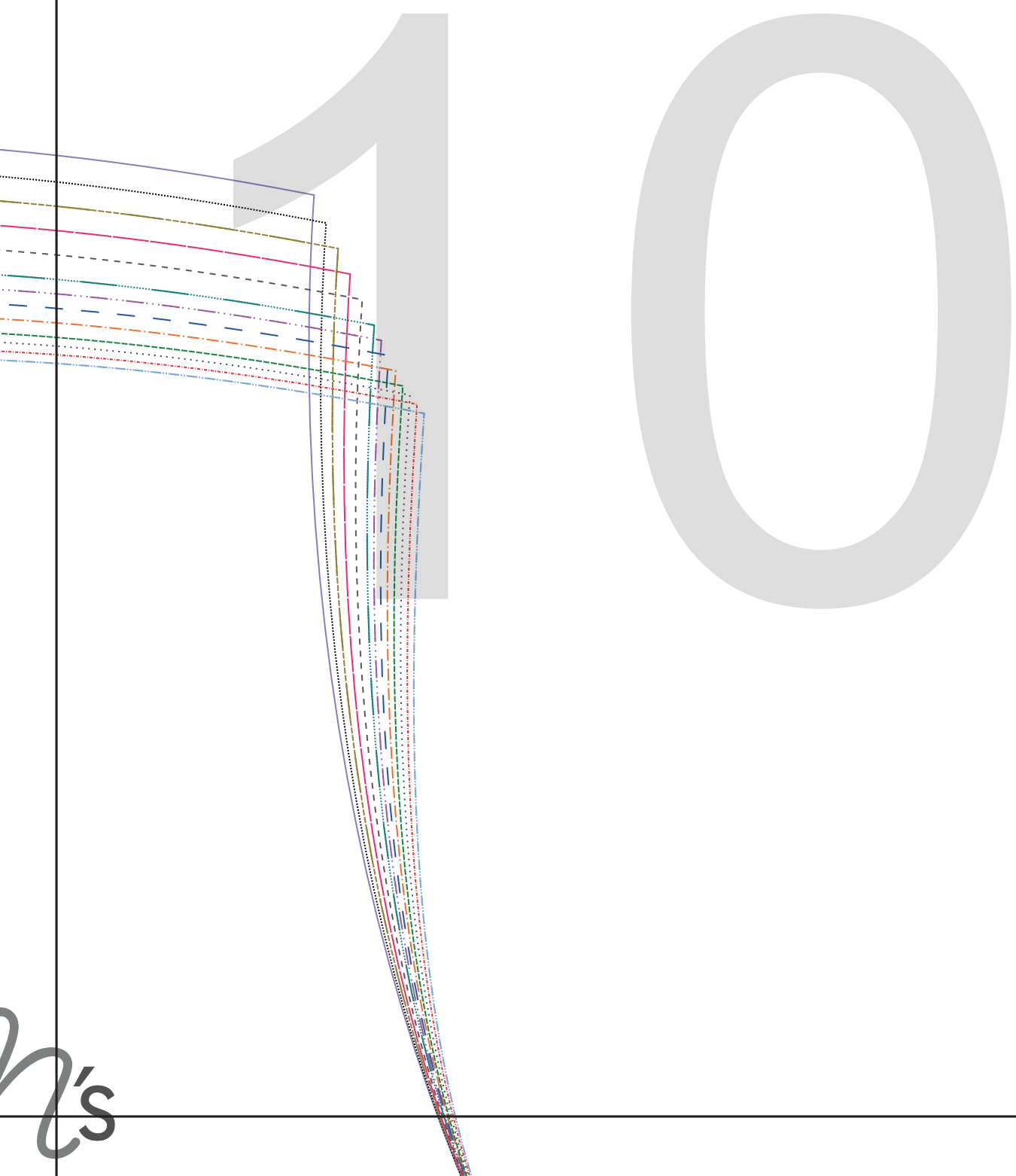
48

50

52

54

56



h's

Hoodieek UDINI

Fadenlauf

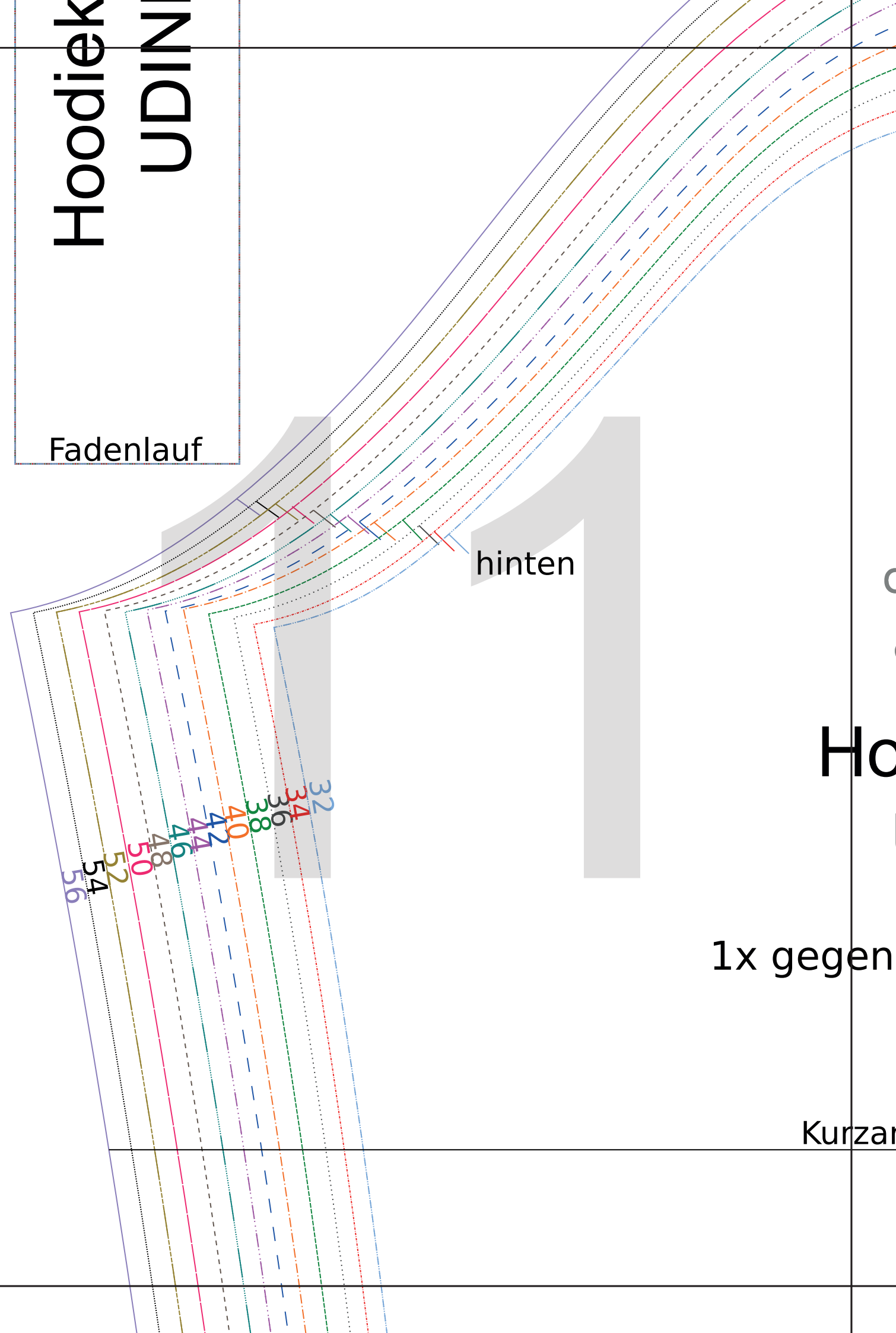
hinten

Ho

1x gegen

Kurzanz

32
34
36
38
40
42
44
46
48
50
52
54
56



Schulter

drei
e M's

vorne

Hoodiekleid

UDINE

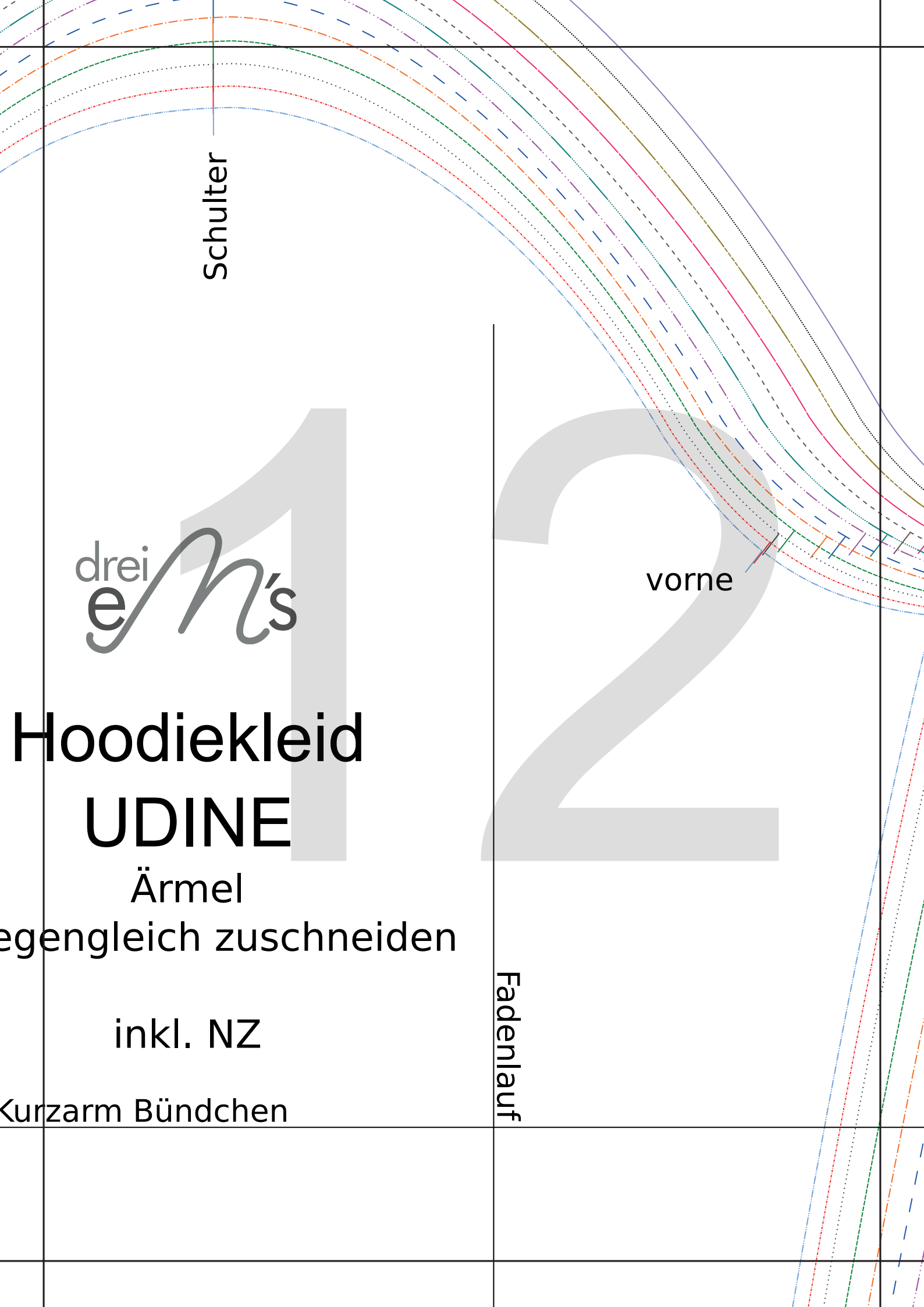
Ärmel

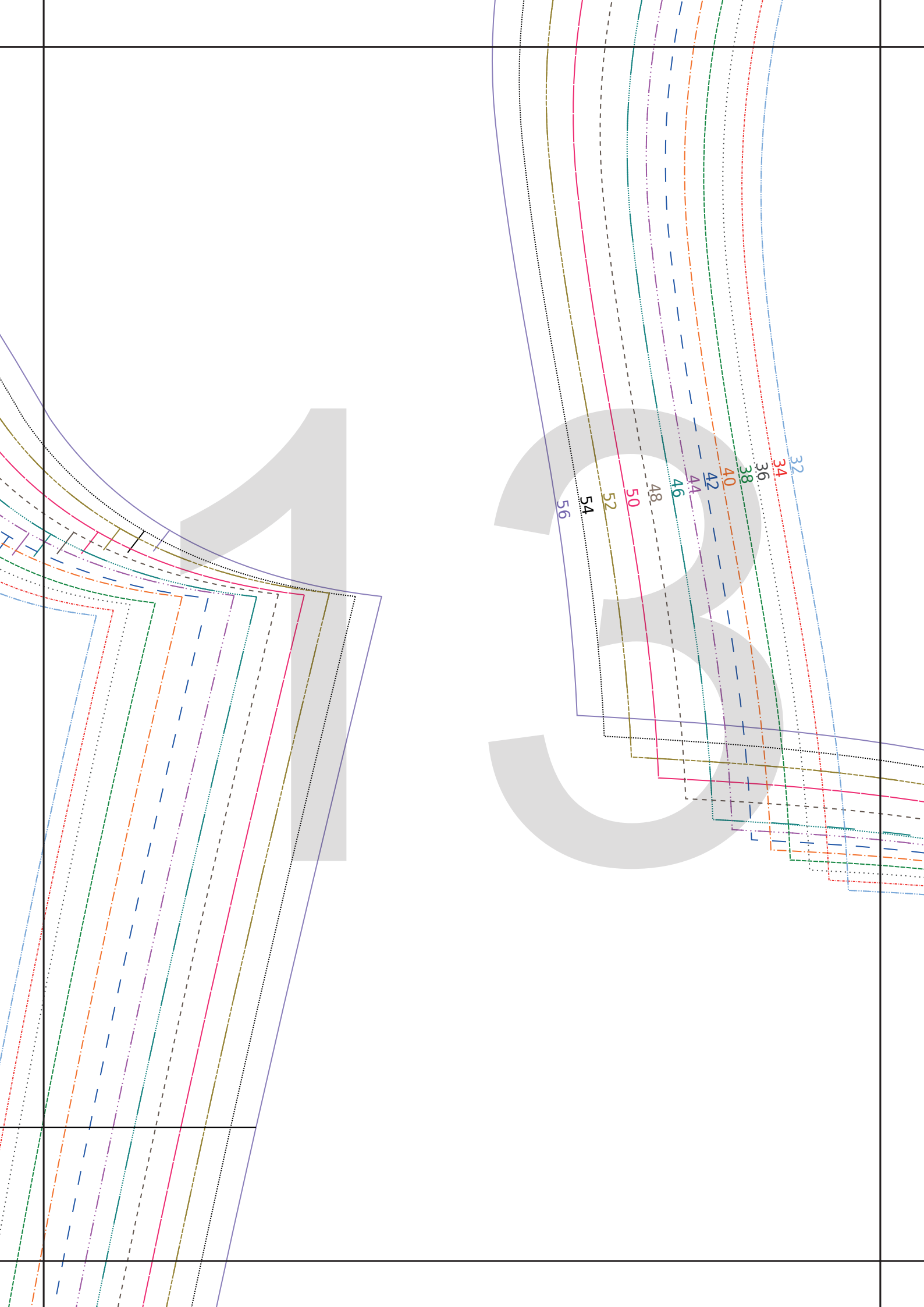
gegengleich zuschneiden

inkl. NZ

Kurzarm Bündchen

Fadenlauf





CS

32
34
36
38
40
42
44
46
48
50
52
54
56

Hoodiekle

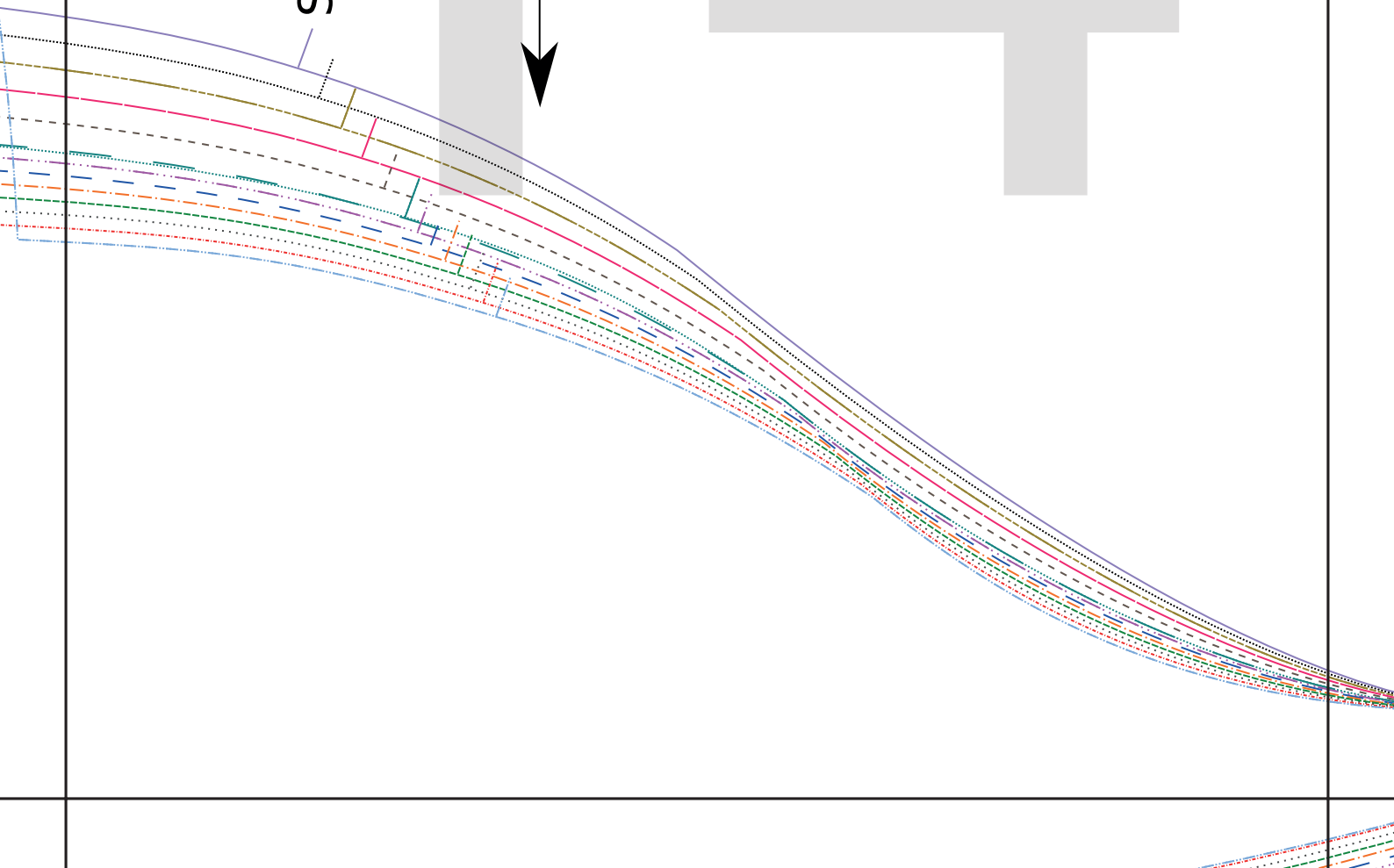
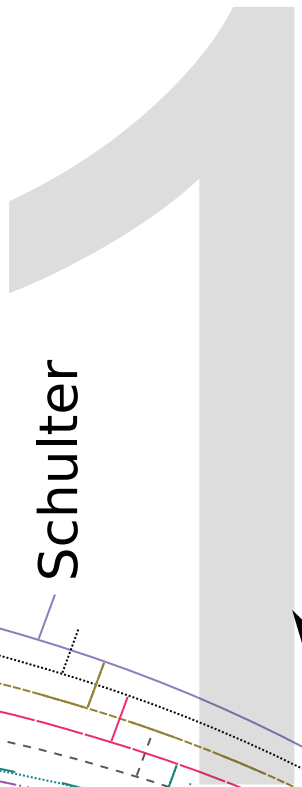
UDINE

Zipfelkapuze

siehe Anleitung

inkl. NZ

Fadenlauf



1's

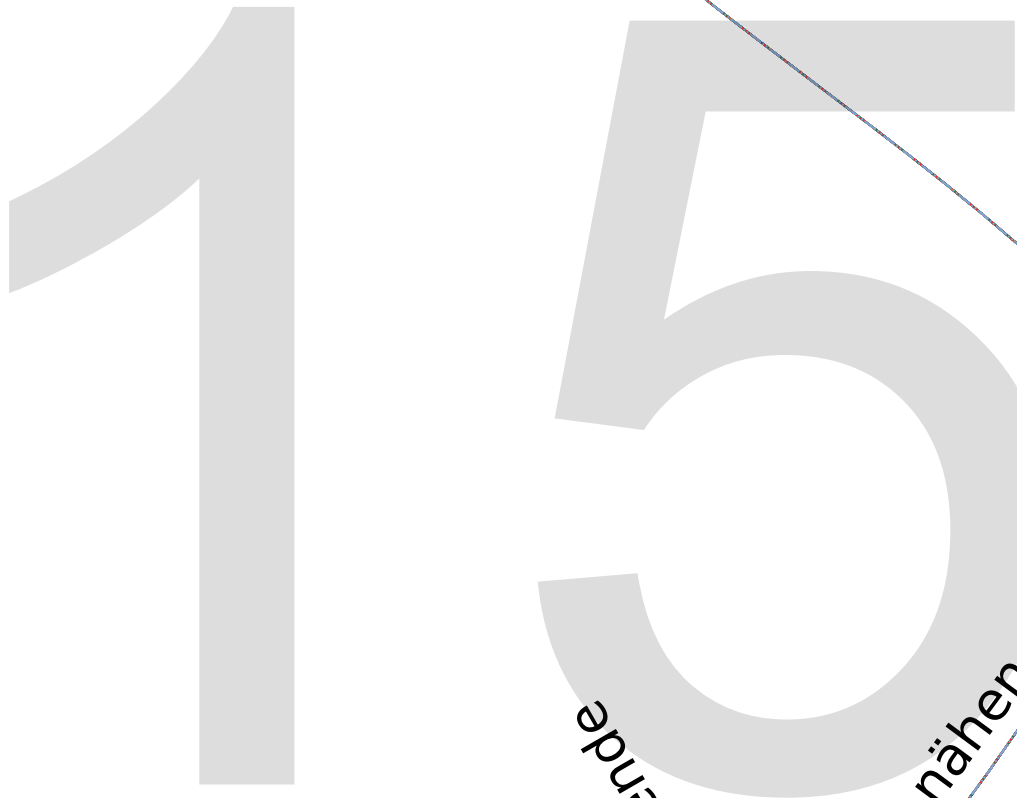
ekleid

NE

apuze

leitung

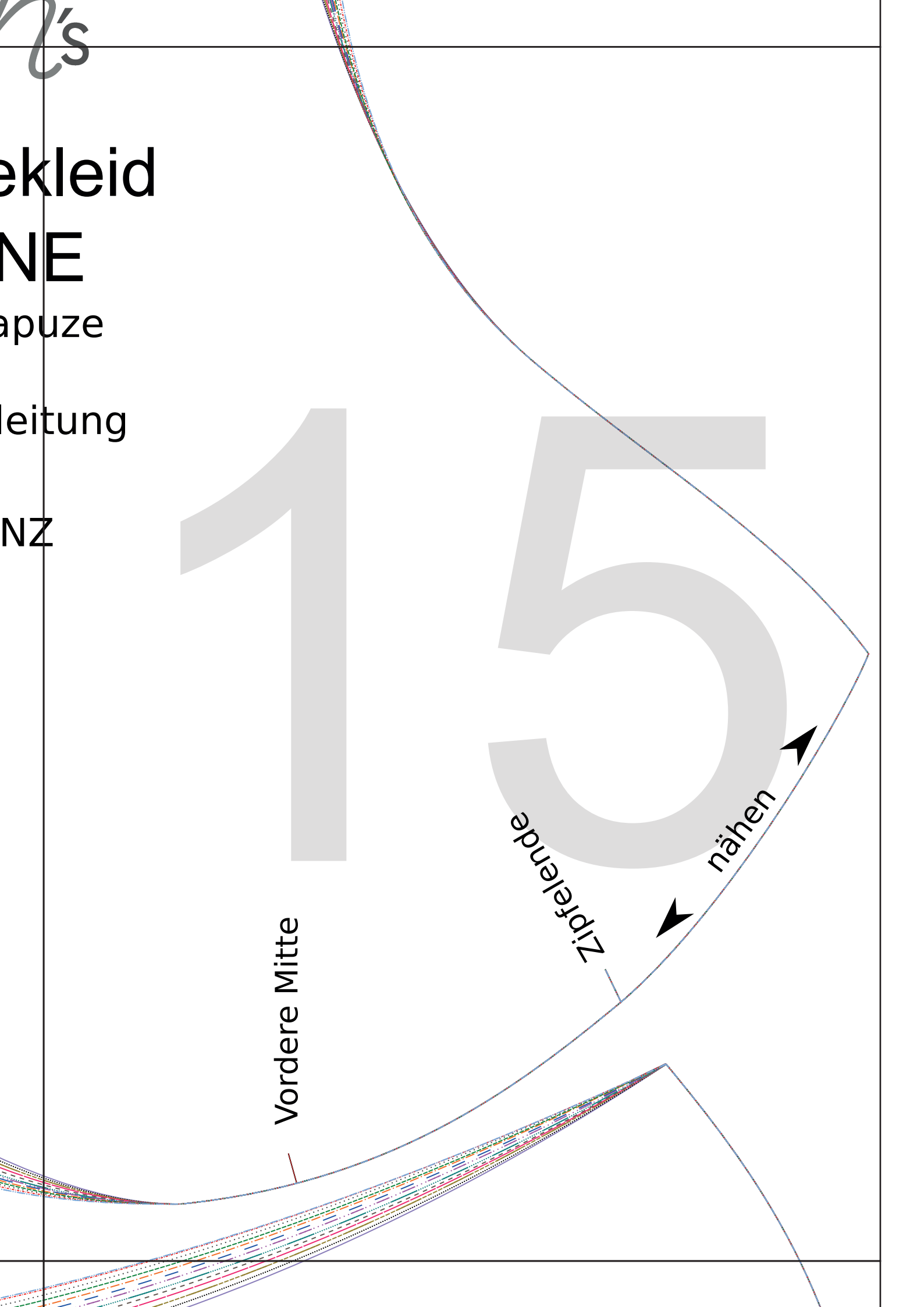
NZ



Vordere Mitte

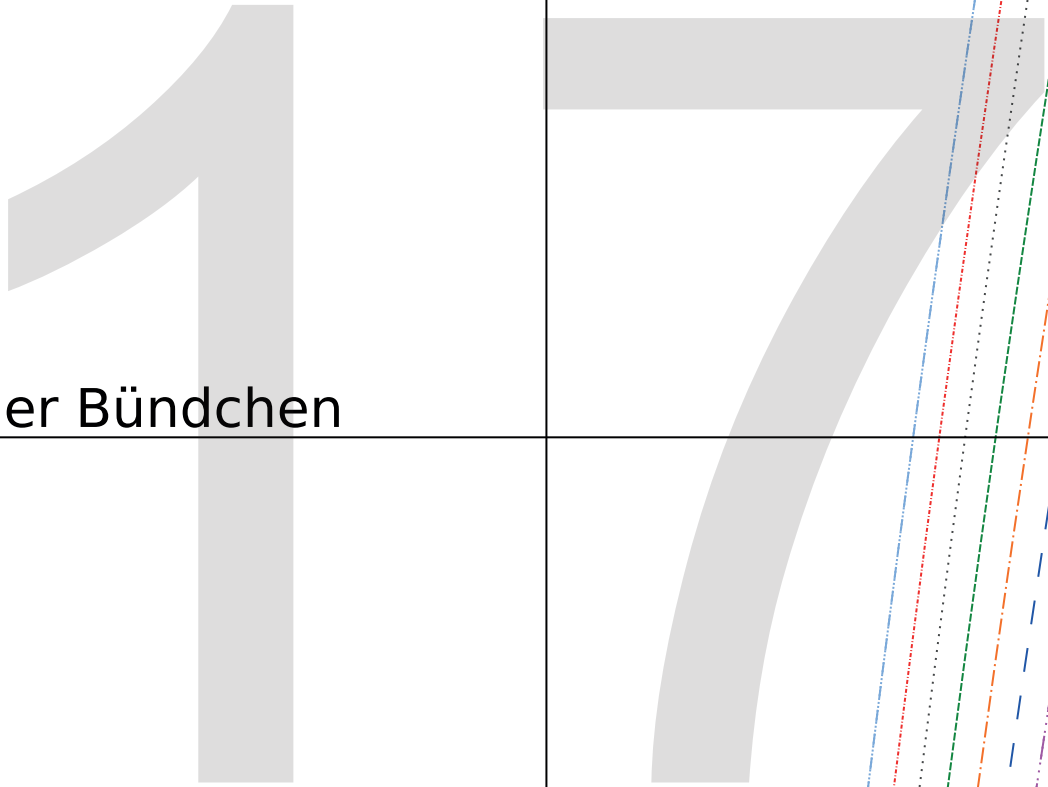
Zipfelende

nähen

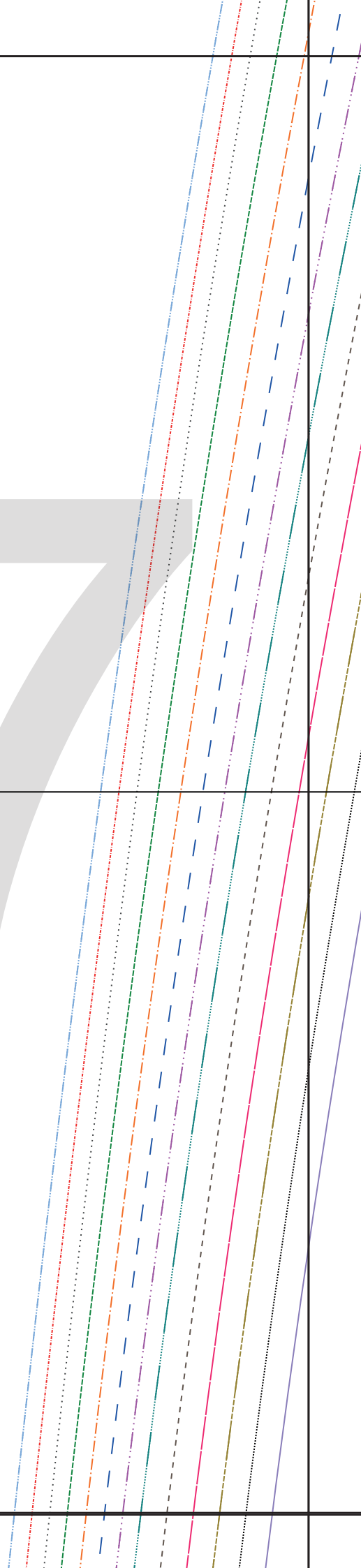


16

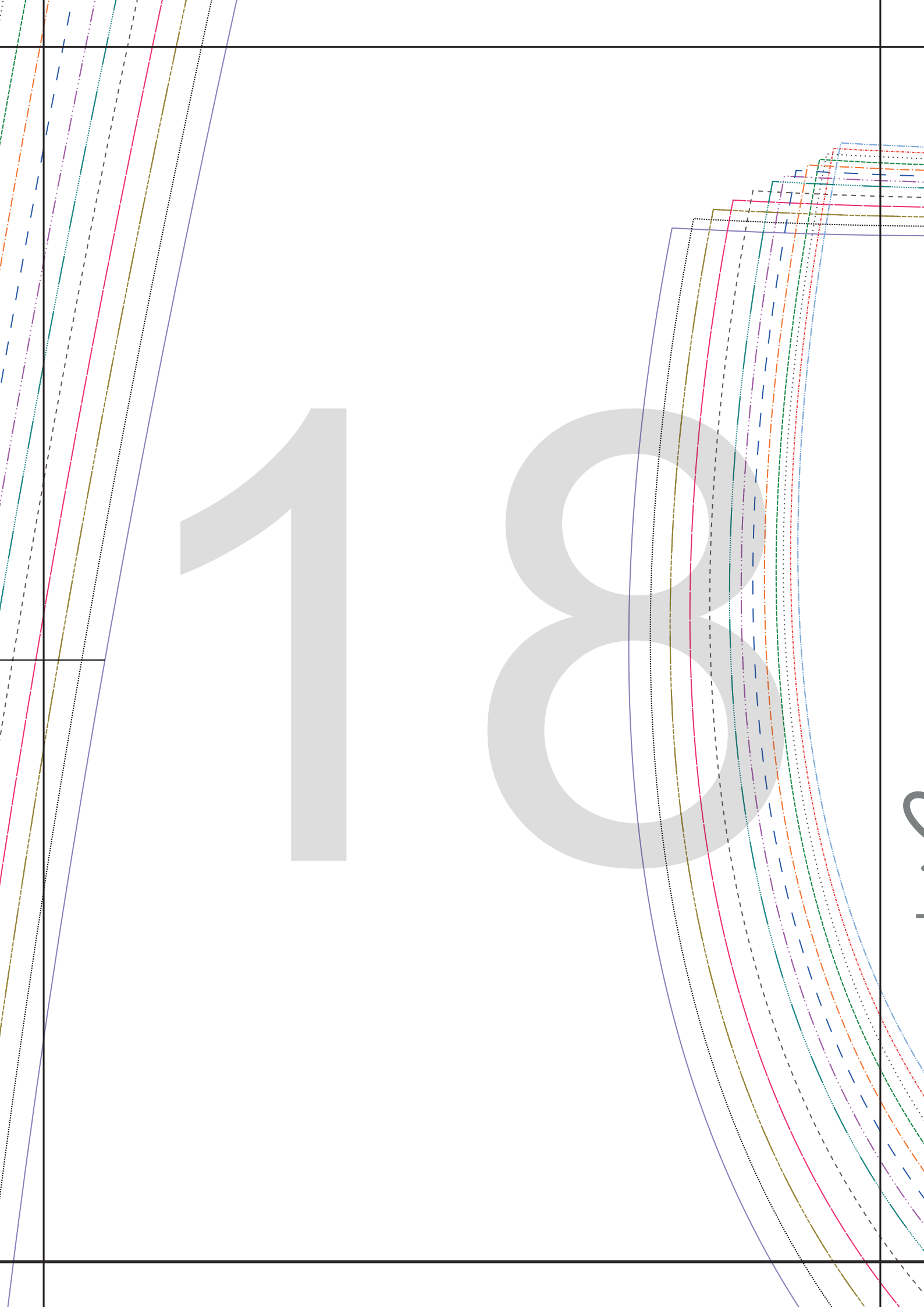
3/4 Arm Sa



m Saum oder Bündchen



18



drei
eNs

Hoodiekleid

UDINE

Kapuze

1x Außenkapuze gegengleich zuschneiden

1x Innenkapuze gegengleich zuschneiden

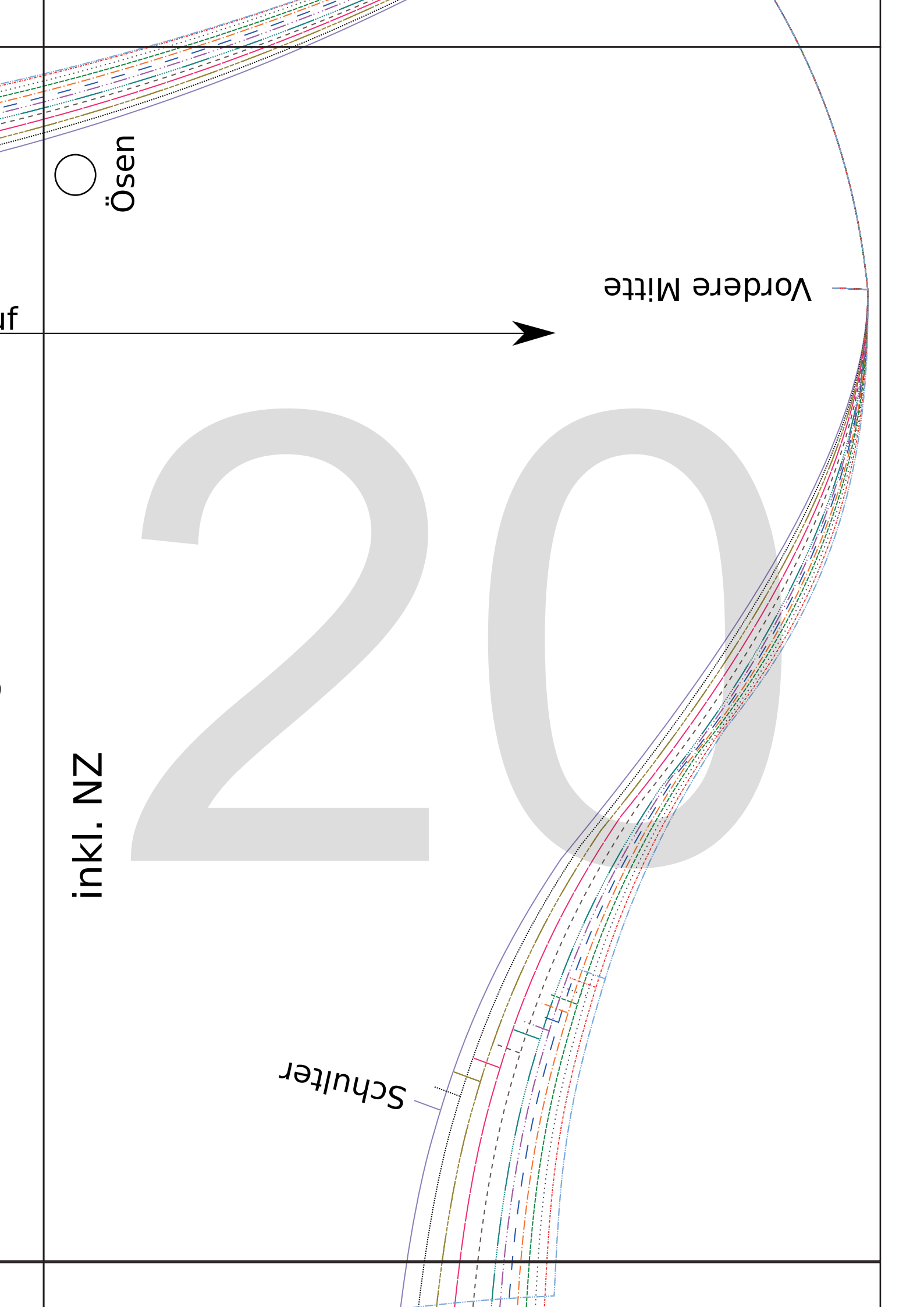
inkl. NZ

Zipfelkapuze

siehe Anleitung

Fadenlauf

inkl. NZ



uf



Ösen

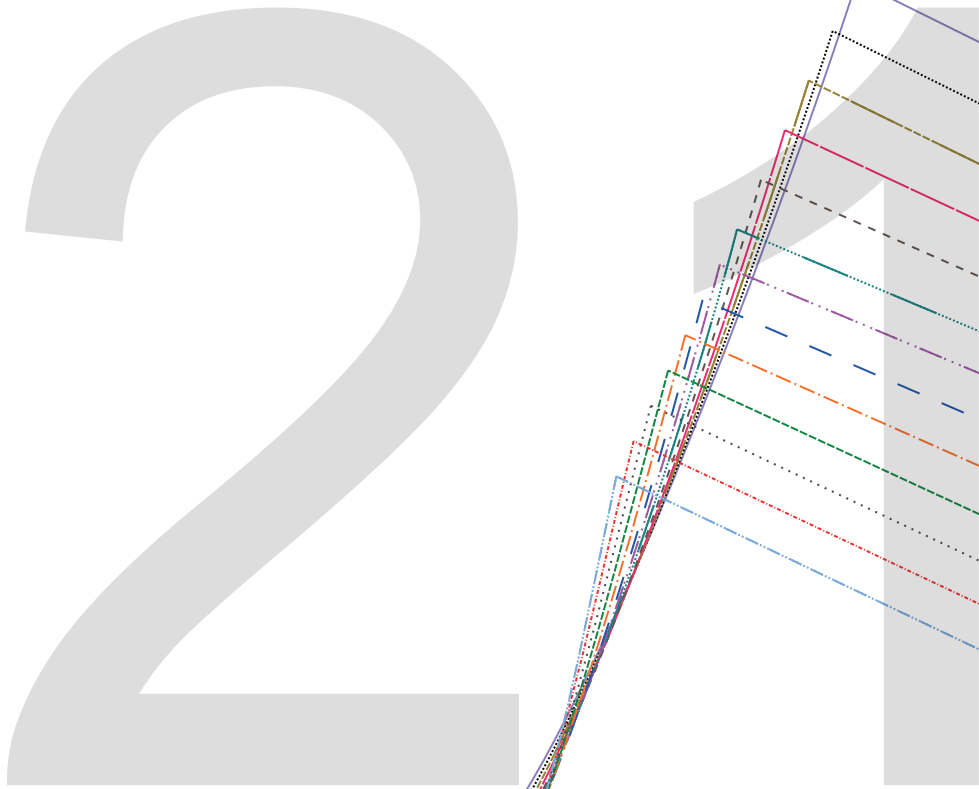
Vordere Mitte

inkl. NZ

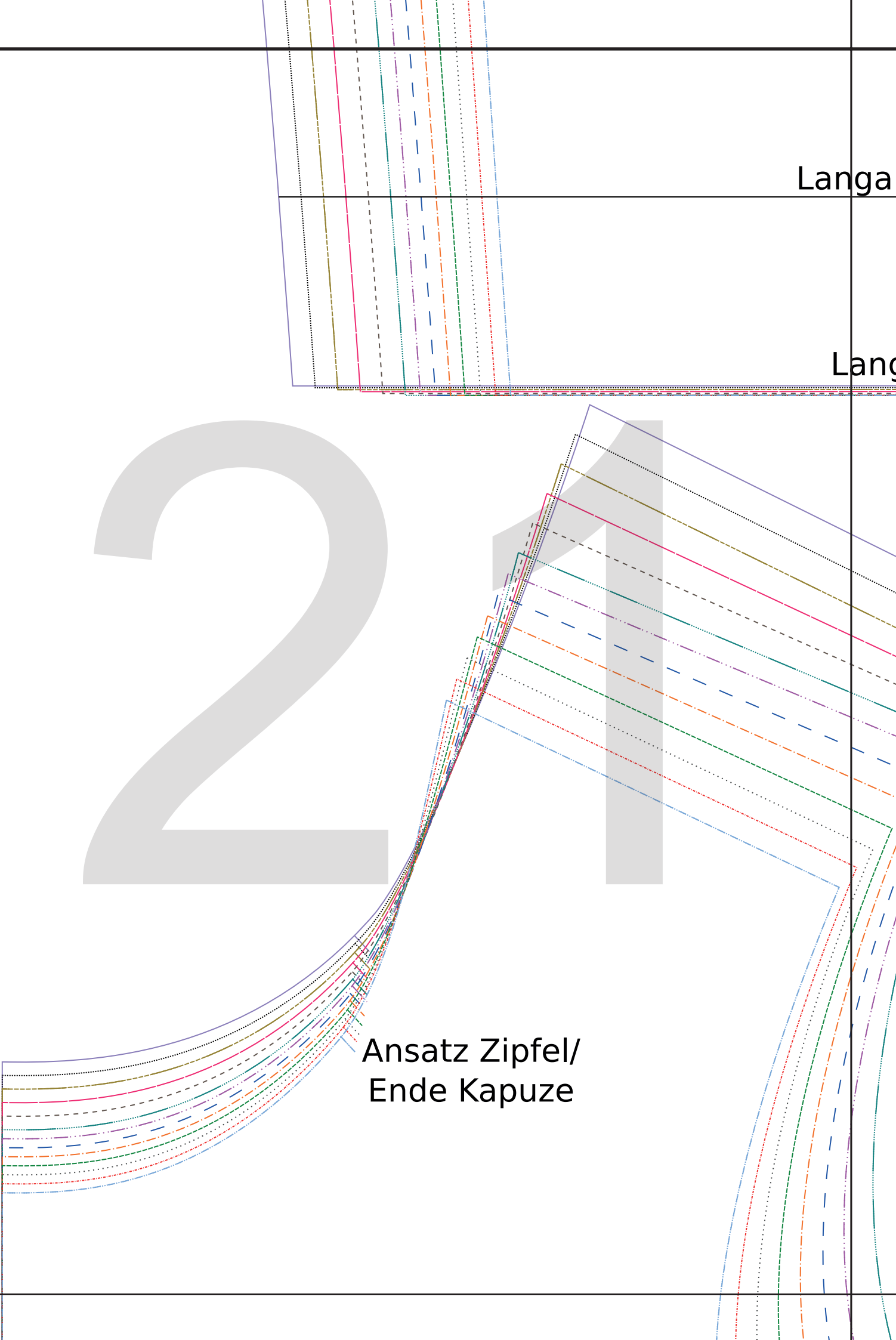
Schulter

Langa

Lang



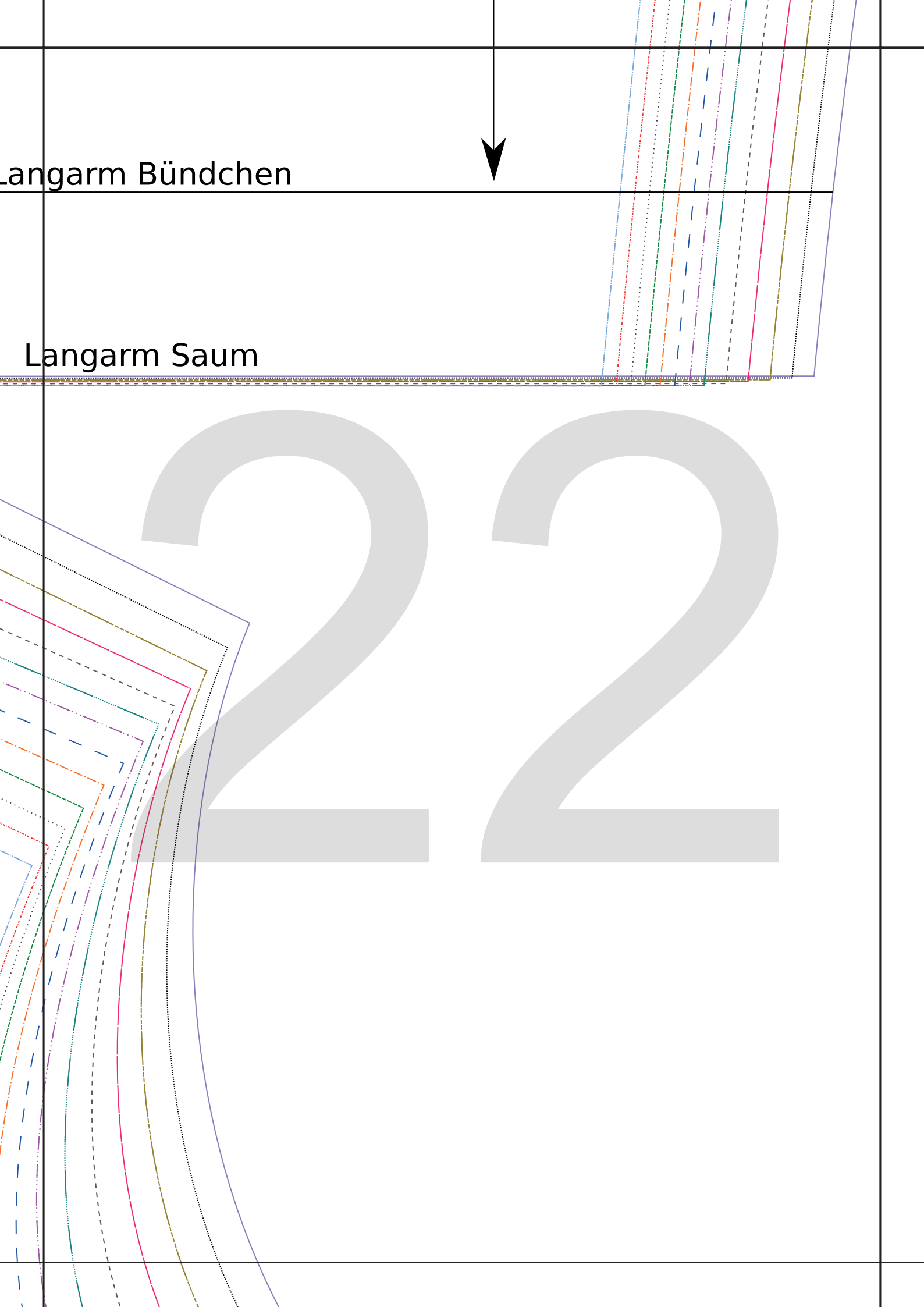
Ansatz Zipfel/
Ende Kapuze

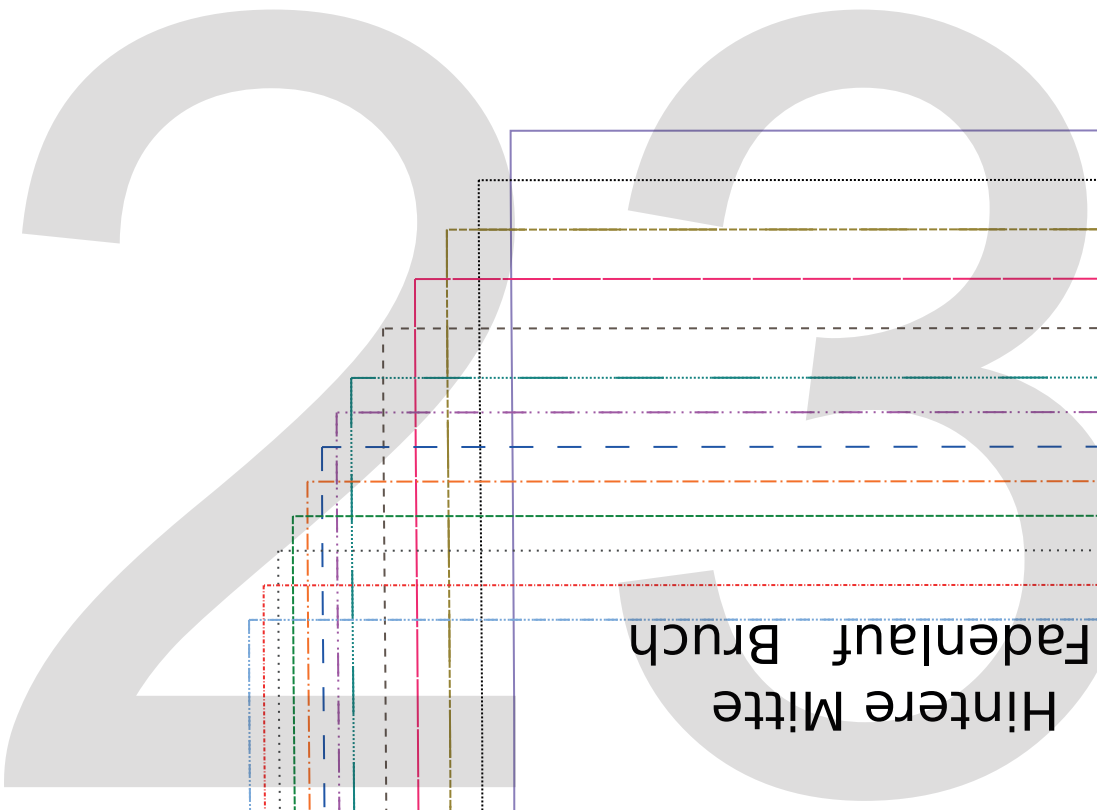


Langarm Bündchen



Langarm Saum





Hinterere Mitte
Fadenlauf Bruch

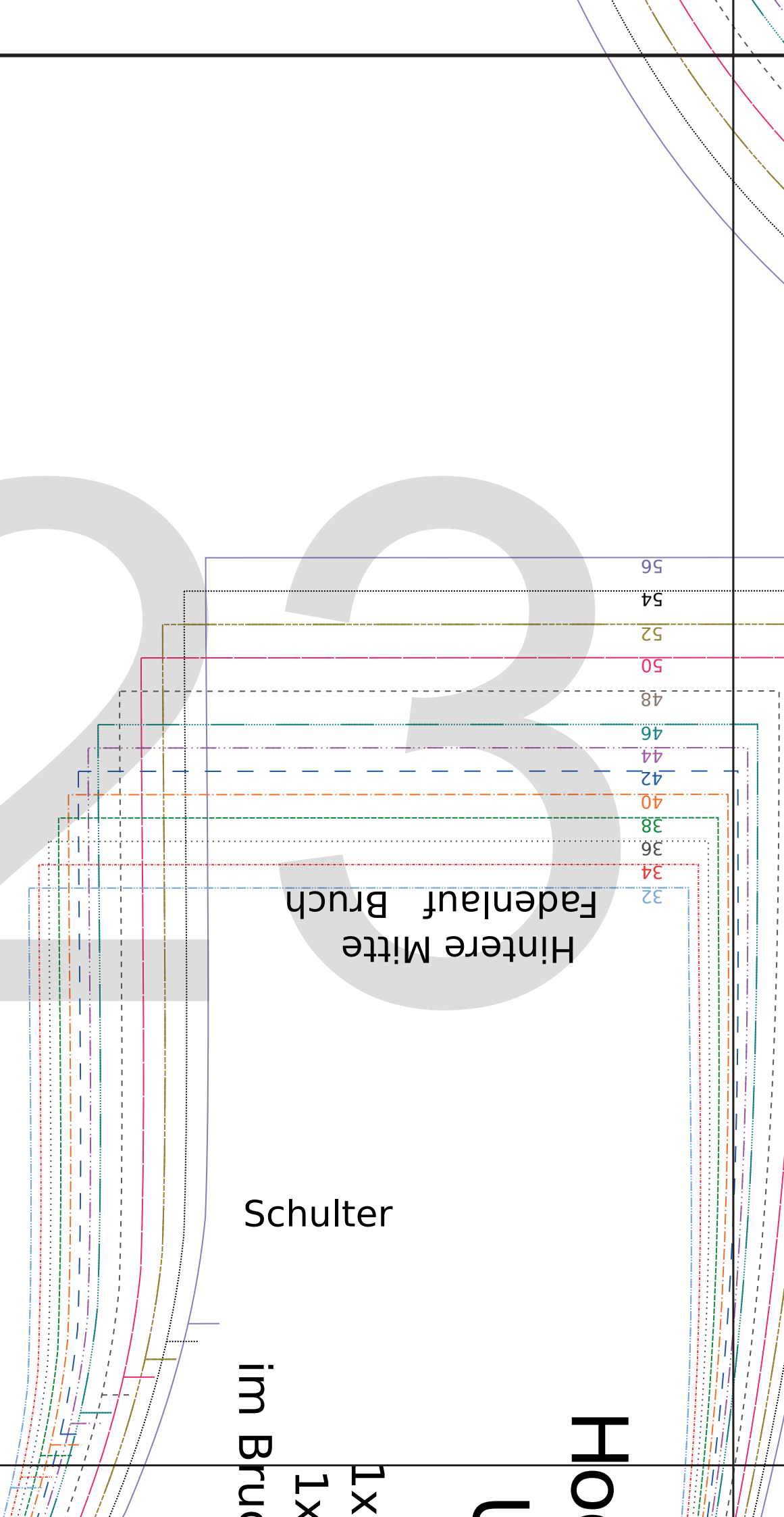
- 56
- 54
- 52
- 50
- 48
- 46
- 44
- 42
- 40
- 38
- 36
- 34
- 32

Schulter

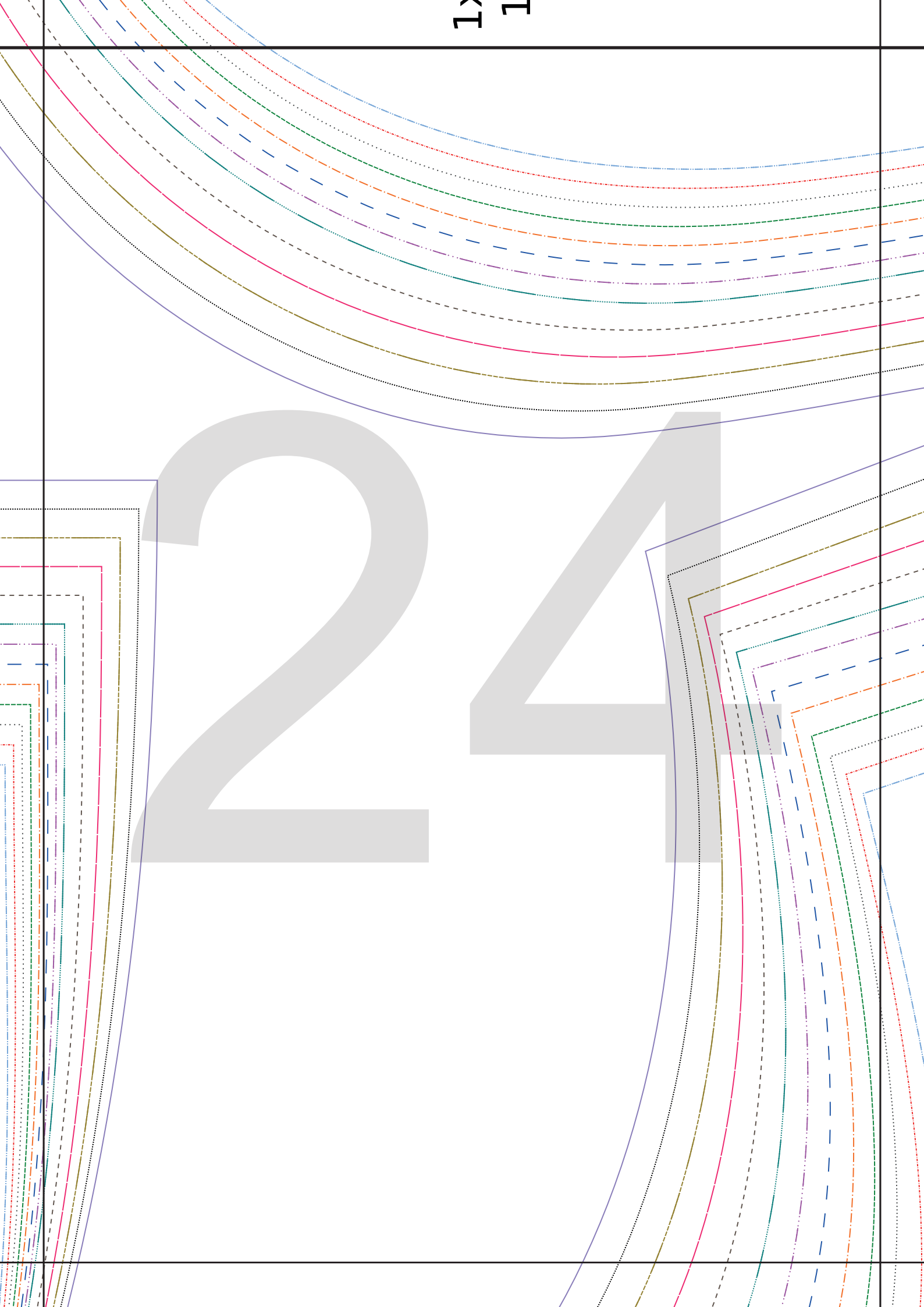
im Bru

1x
1x

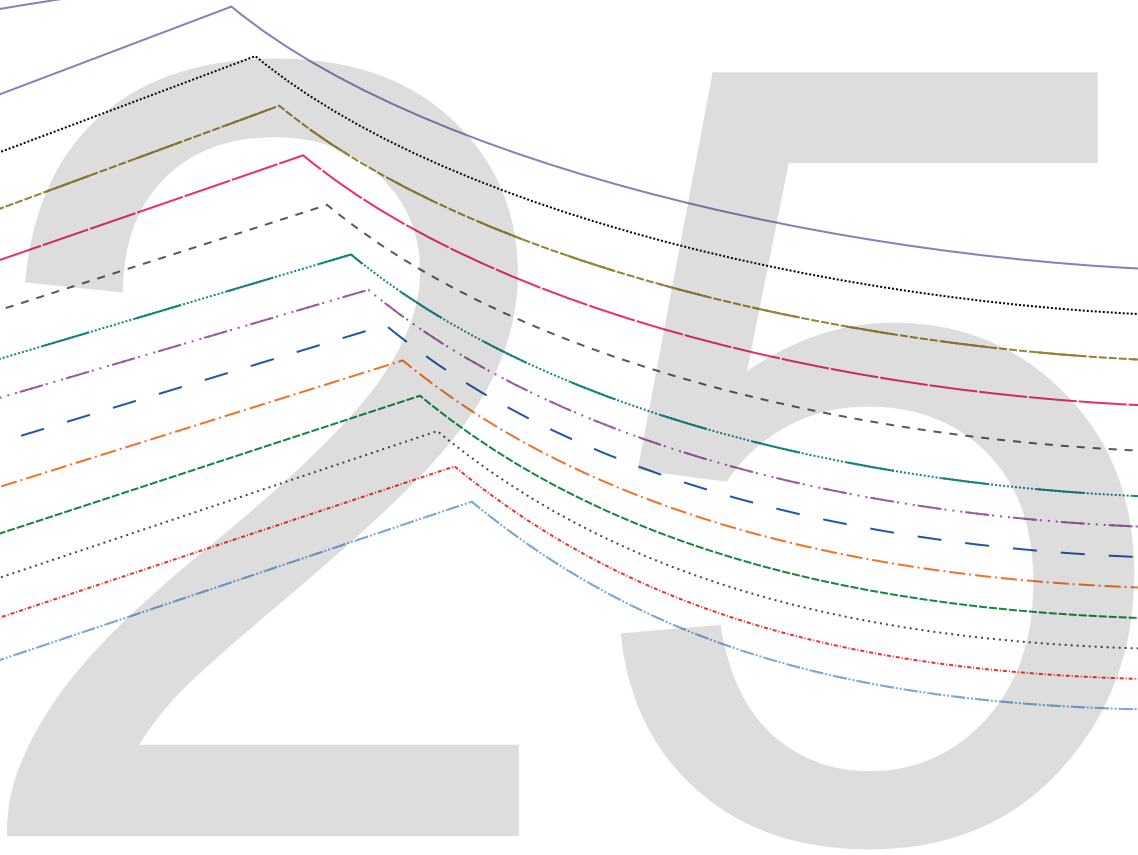
HO



24



32
34
36
38
40
42
44
46
48
50
52
54
56



drei
e M's

Hoodiekleid

UDINE

Vorderteil

1x im Bruch zuschneiden

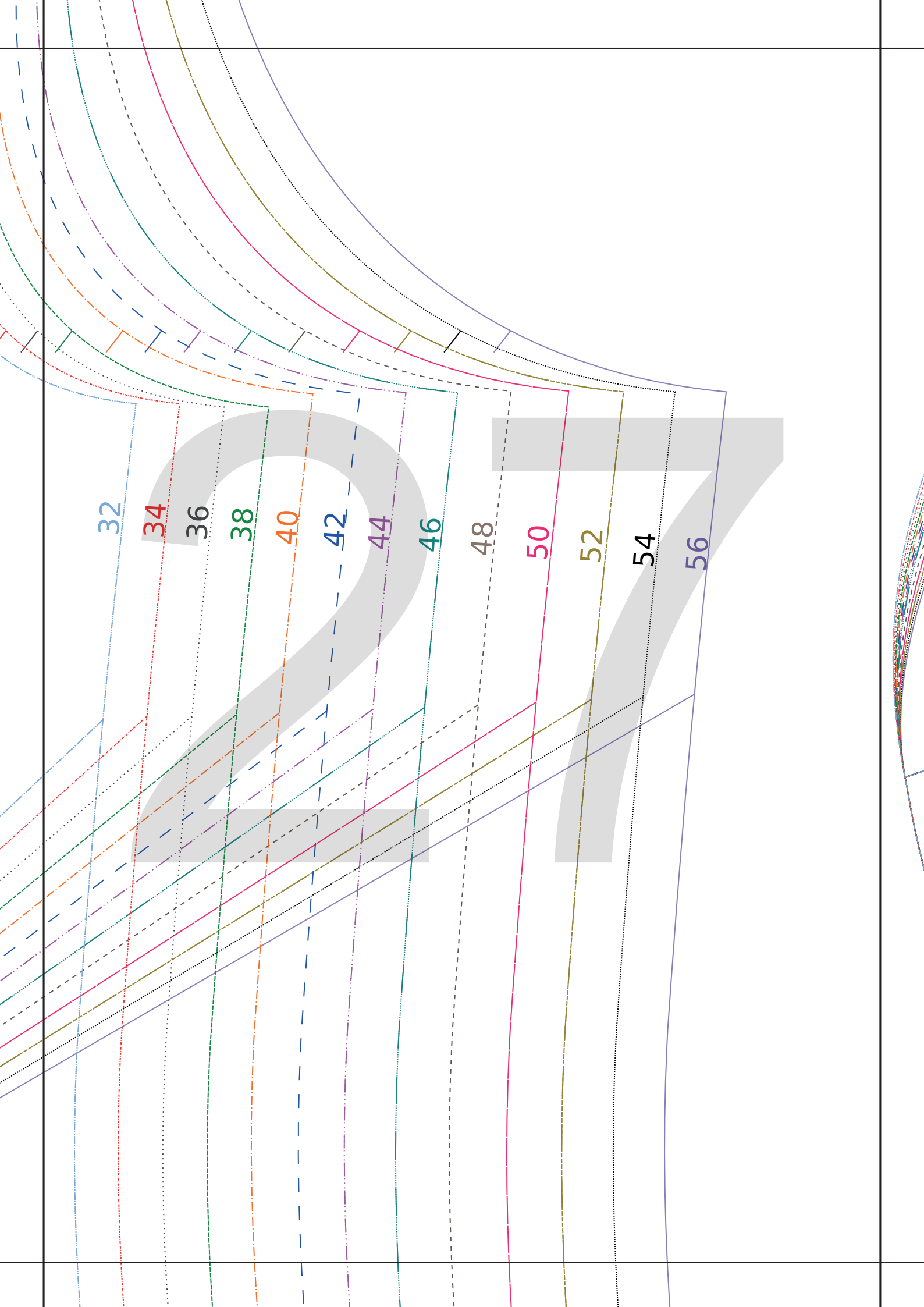
inkl. NZ

Vordere Mitte Fadenlauf

Br

Teilungsnahat zzgl. NZ

nahat zzgl. NZ



Hoodiekleid

UDINE

Kragen

1x Außenstoff

1x Innenstoff

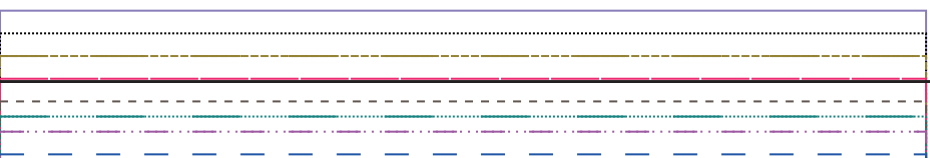
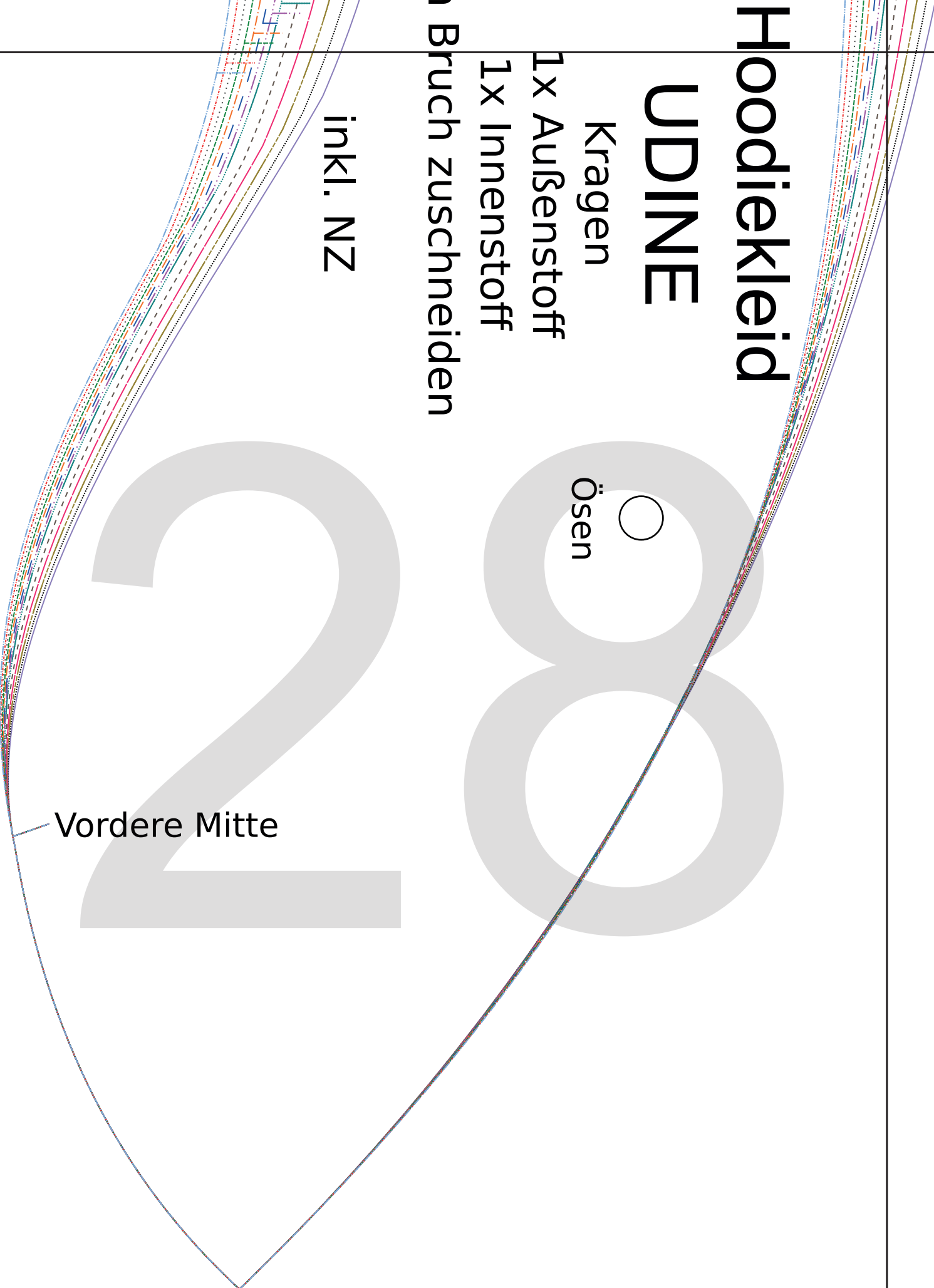
Bruch zuschneiden

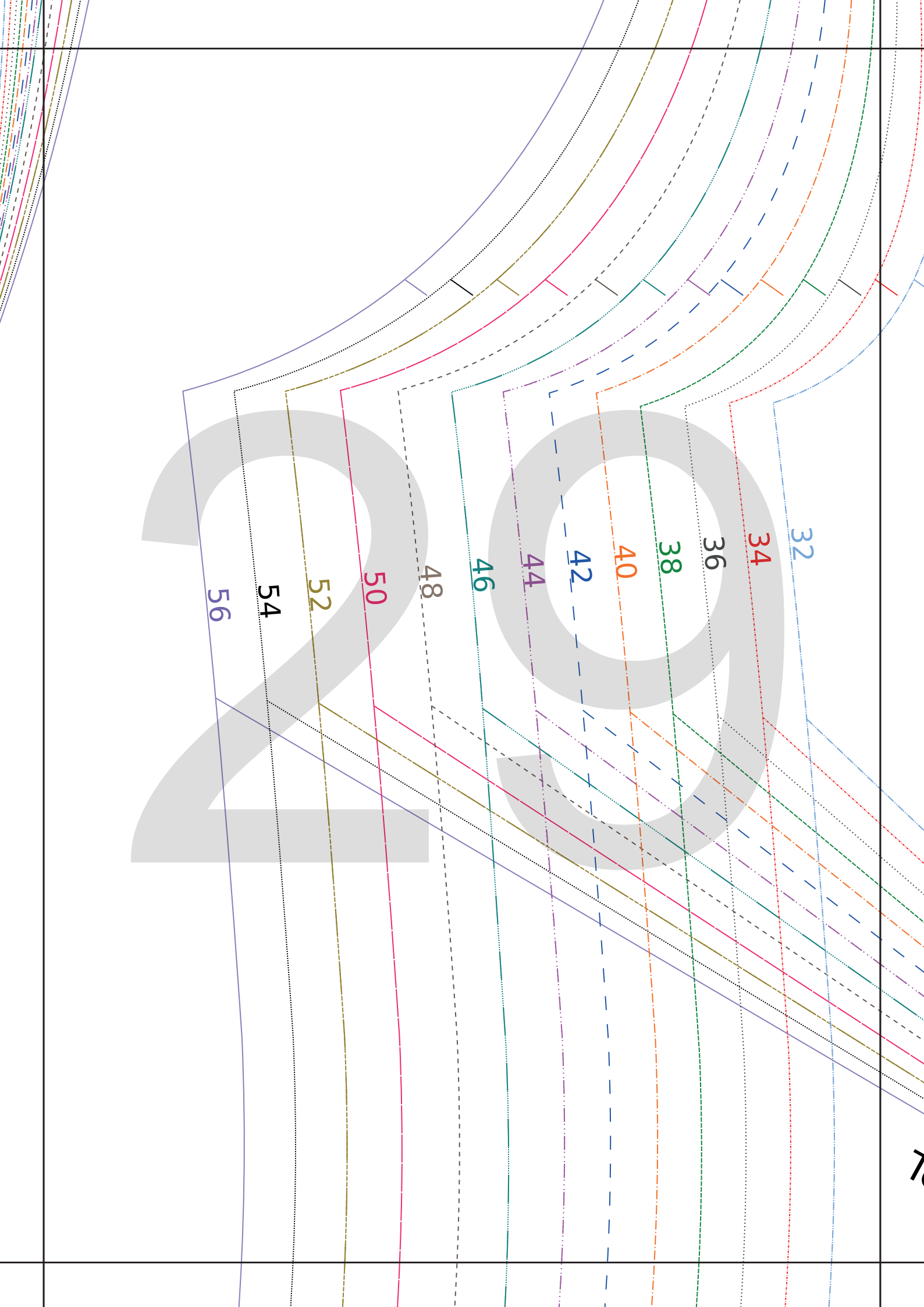
inkl. NZ

Ösen



Vordere Mitte







drei
e M's


Hoodiekleid

UDINE

Rückenteil

1x im Bruch zuschneiden

inkl. NZ



▼ Teilungsnaht zzgl. NZ

Teilungsnaht zzgl.

Hintere Mitte Fadenlauf Bruch

uf

Bruch

Teilung

Teilungsnahat zzgl. K...



Hoodielänge

32



Hoodiekleid

UDINE

Kapuzenmittelstreifen

für normale und

Zipfelkapuze

1x Außenkapuze

1x Innenkapuze

34

ingsnaht zzgl. NZ ▲

35

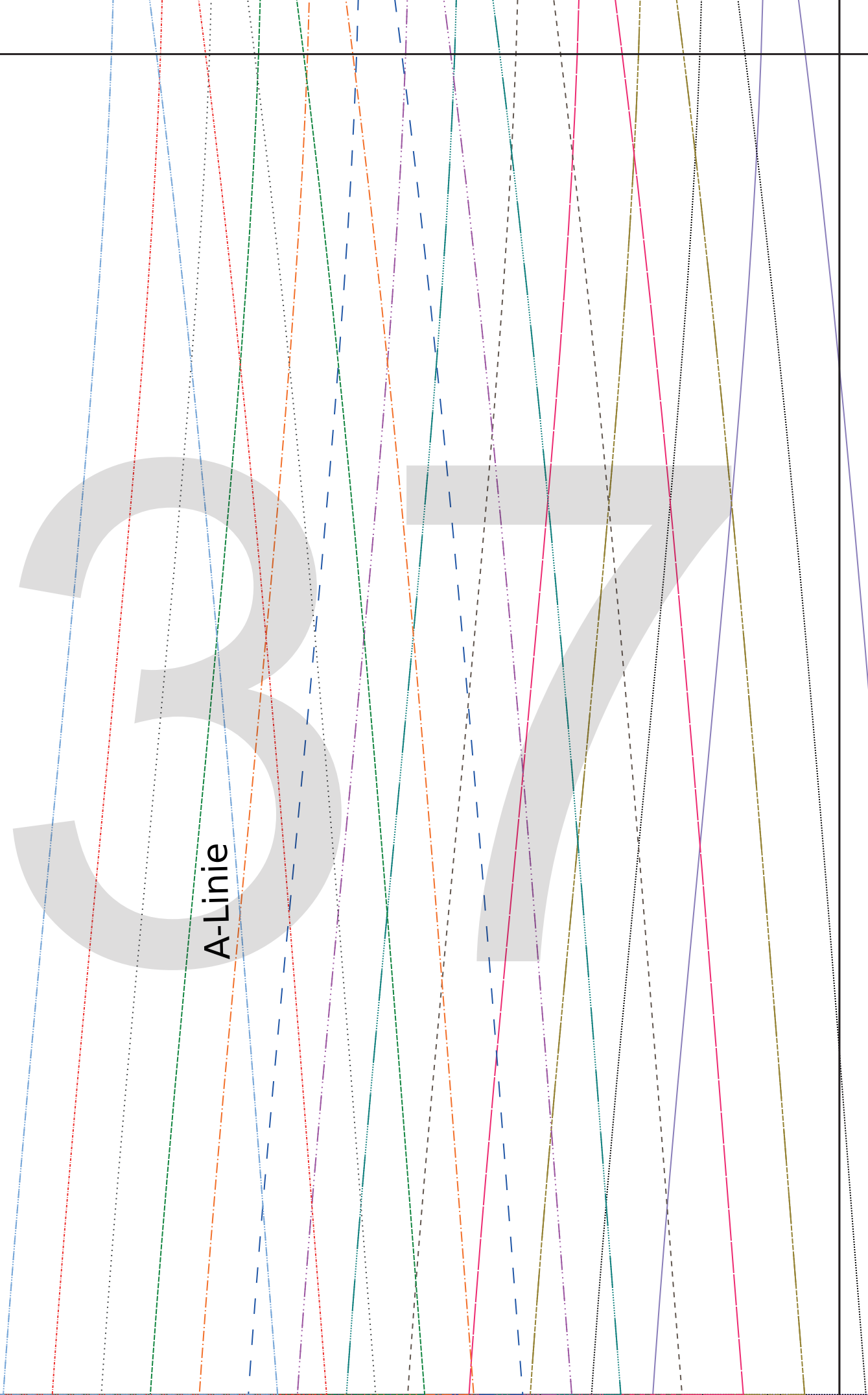
Hoodielänge

36

Saumlänge

37

A-Linie



1x Außenkapuze
1x Innenkapuze
zuschneiden

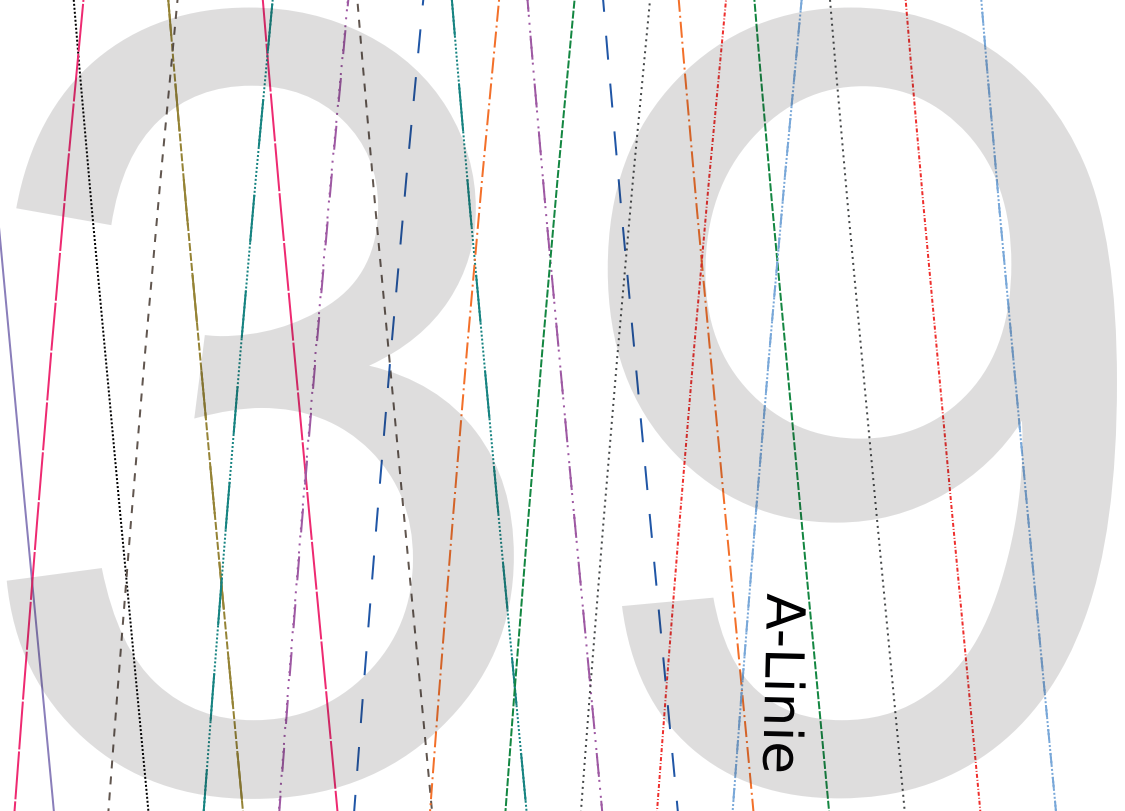
inkl. NZ



Fadenlauf

Hintere Mitte

unten 32-56



A-Linie

40

Saumlänge