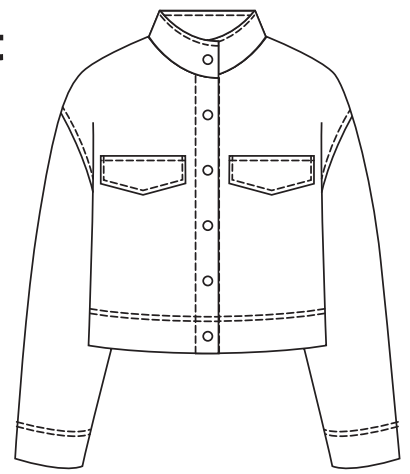


DIY2408 Shirt jacket #MetteShirtJacket

Seam allowance is included on all patterns:
 Center front 1+6 cm
 Hem line 1+5.5 cm
 Sleeve hem 1+5.5 cm
 All other seams 1 cm



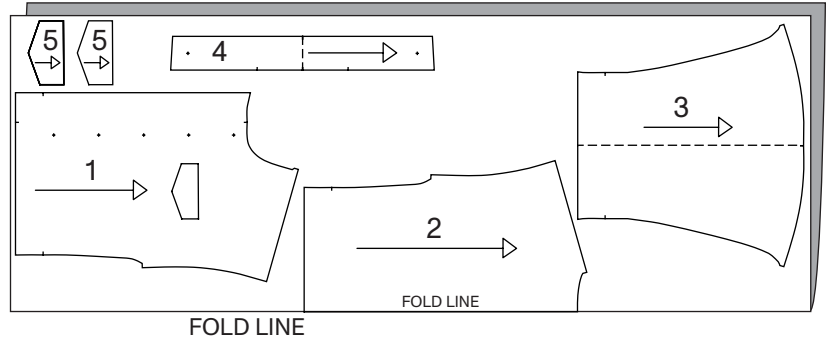
You need to cut the following parts

Fabric

Part 1	Front	x 2
Part 2	Back	x 1
Part 3	Sleeve	x 2
Part 4	Collar	x 2
Part 5	Pocket flap	x 4

Interlining

Part 1	Front	x 2
Part 4	Collar	x 1
Part 5	Pocket flap	x 2



You need the following fabric and accessories

Size		XS	S	M	L	XL	
Fabric:	w/135 cm	190	190	190	195	195	cm
Interlining:	w/90 cm	60	60	60	60	60	cm

Accessories:
 6 x Button

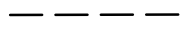
Pick your size

XS	-----
S
M	—————
L	- - - - -
XL	●●●●●●●●

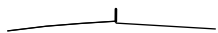
Symbols you may find on your patterns



Grain line



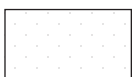
Fold line



Notch



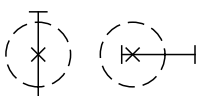
Gathering



Interlining



Cut line



Placement of button and buttonhole

Self
made®

10 CM

CONTROL SQUARE:
 Print page 1, to check the square measurements:
 If the measurements do not match, please adjust your printer settings.

X

CONTROL PAGE FIT:
 In print preview check page margin.
 Margin have to be equal on all 4 sides of each page.

10 CM

Glue or tape your patterns together as shown in the diagram

DIY2408 Shirt jacket #MetteShirtJacket

Check instructions in folder on all platforms
 Create your size chart
 Print the PDF file
 Measure your body
 All dimensions in cm

You need to cut the following parts:

Part 1	Front	x2
Part 2	Back	x1
Part 3	Sleeve	x2
Part 4	Collar	x2
Part 5	Pocket-Flap	x4

Interfacing:

Part 1	Collar	x2
Part 2	Front	x1
Part 3	Sleeve	x2

You need the following fabric and accessories:

Fabric: 150cm, 160cm, 170cm, 180cm, 190cm, 200cm, 210cm, 220cm, 230cm, 240cm, 250cm, 260cm, 270cm, 280cm, 290cm, 300cm

Accessories: 1/4 inch Buttons

Optional printing tool for your patterns:

10 CM

Self made

CONTROL SQUARE: Print page 1 to check the print measurements. If not correct, please adjust your printer settings.

CONTROL PROJECT: To print please check page margin weight mark to be accurate with all sizes of each page.

Glue or tape your patterns together as shown in the diagram

DIY2408 PART 5 POCKET-FLAP x4 INCL. SEAM ALLOWANCE

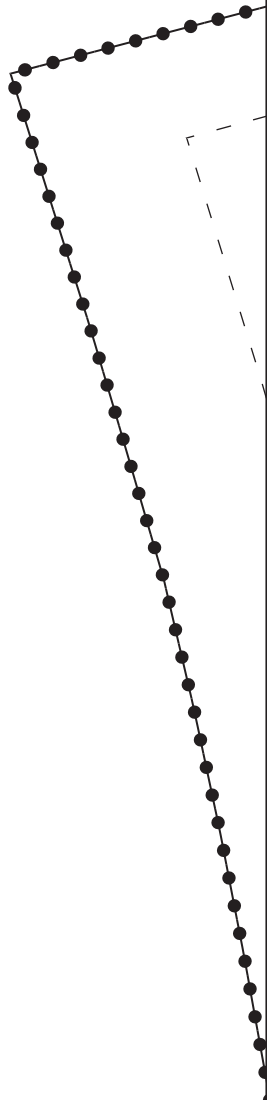
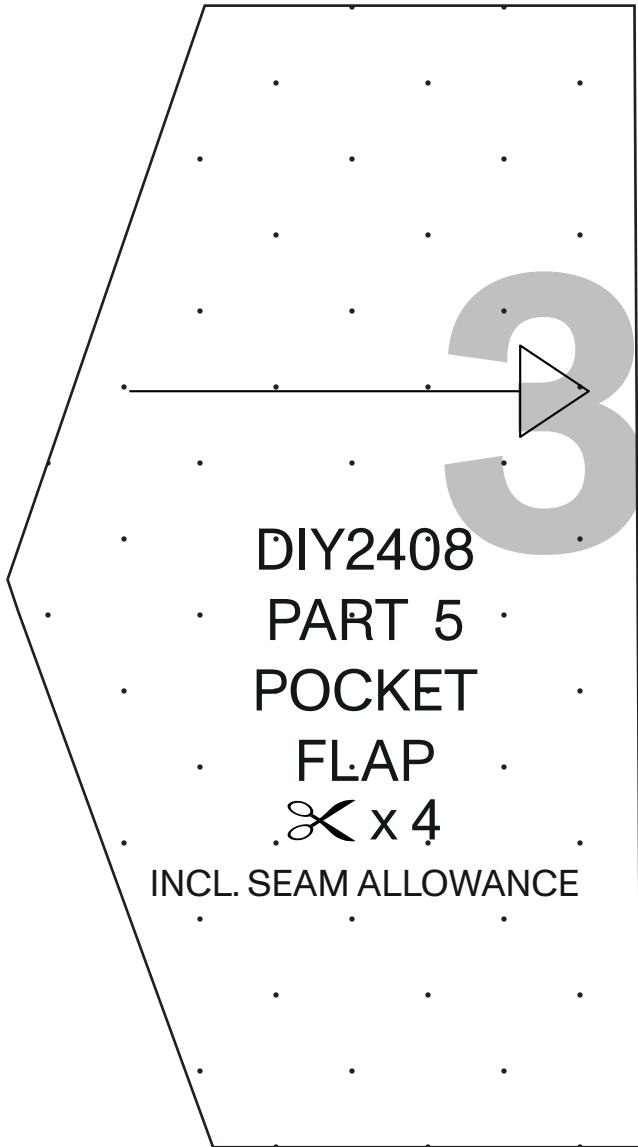
DIY2408 PART 2 BACK x1 INCL. SEAM ALLOWANCE

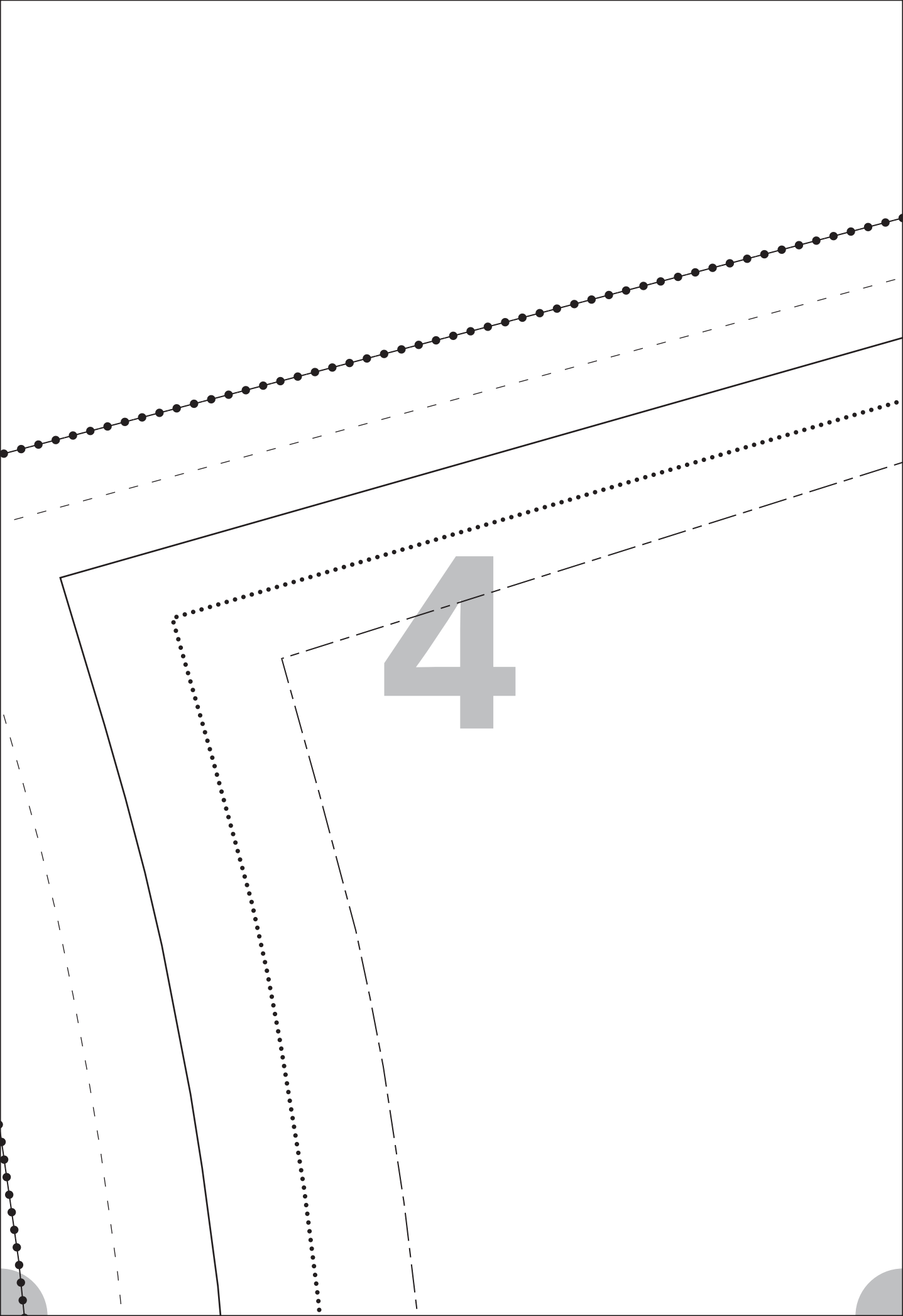
DIY2408 PART 4 COLLAR x2 INCL. SEAM ALLOWANCE

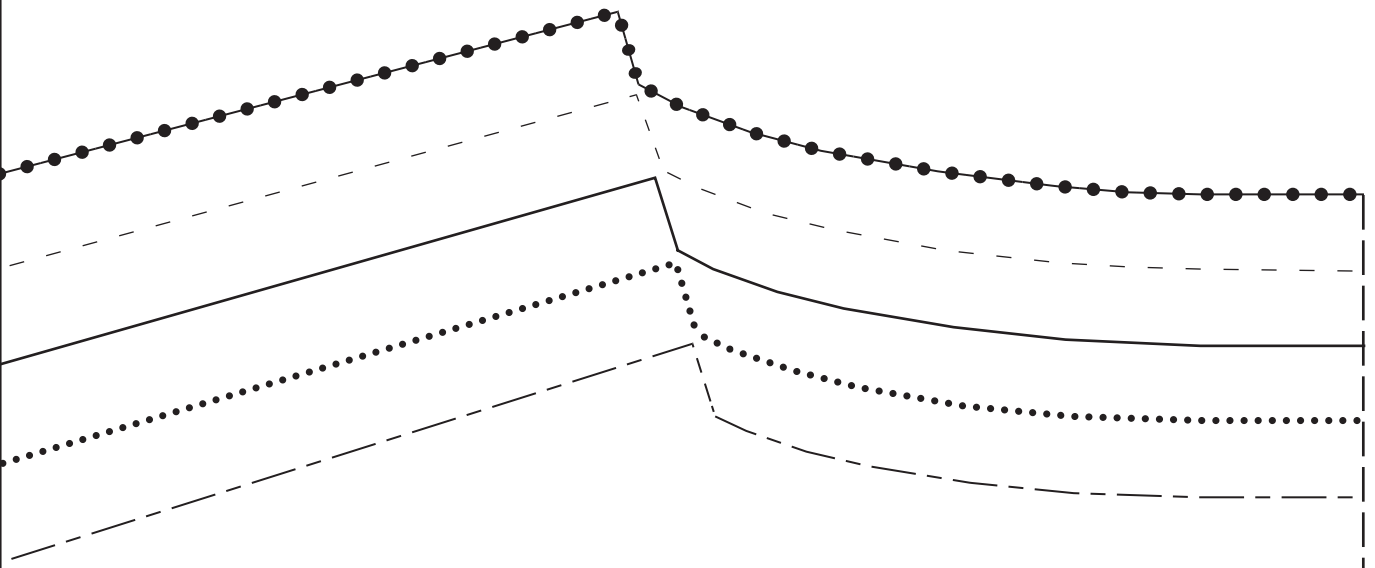
DIY2408 PART 3 SLEEVE x2 INCL. SEAM ALLOWANCE

DIY2408 PART 1 FRONT x1 INCL. SEAM ALLOWANCE

FOLD LINE



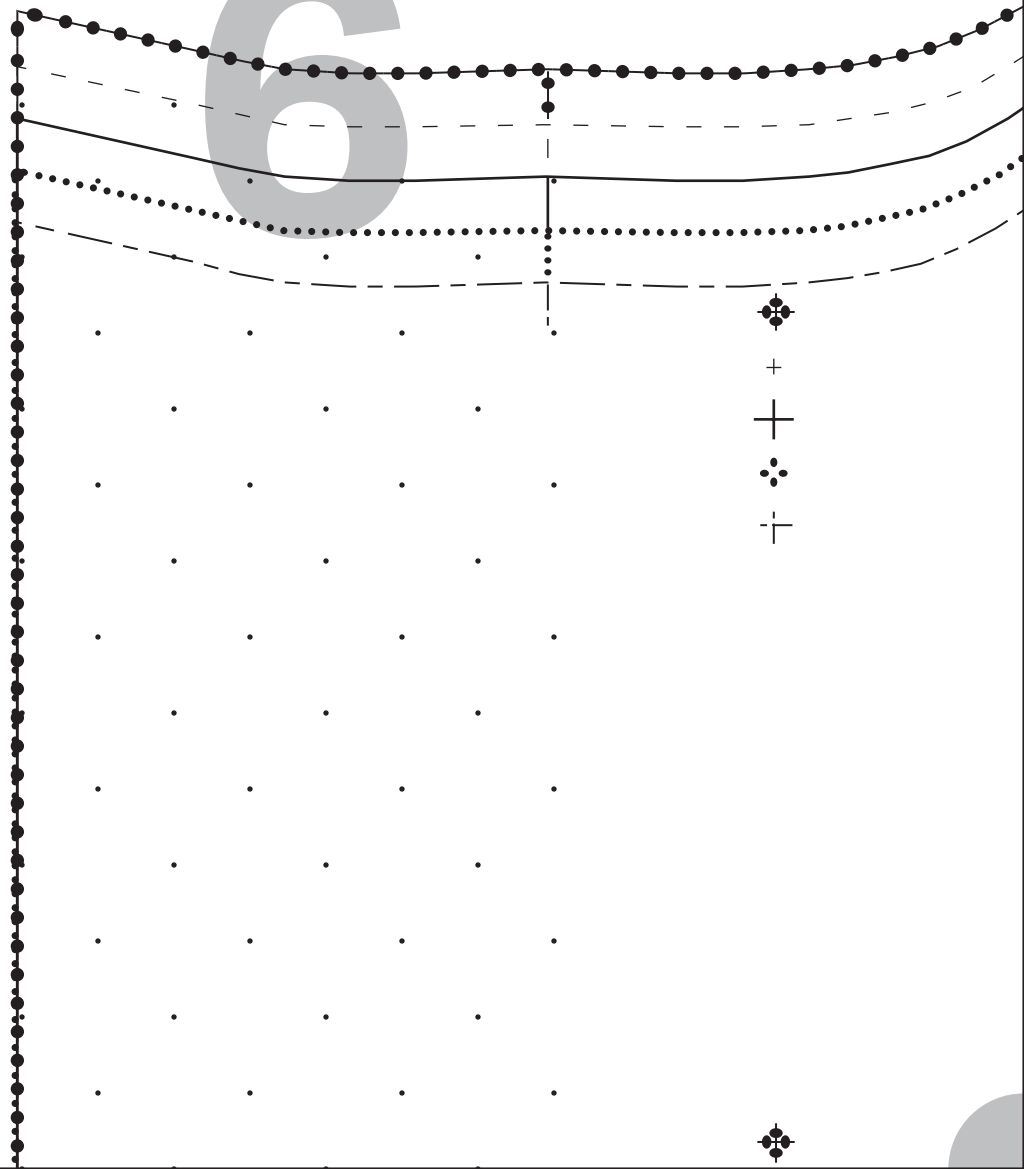


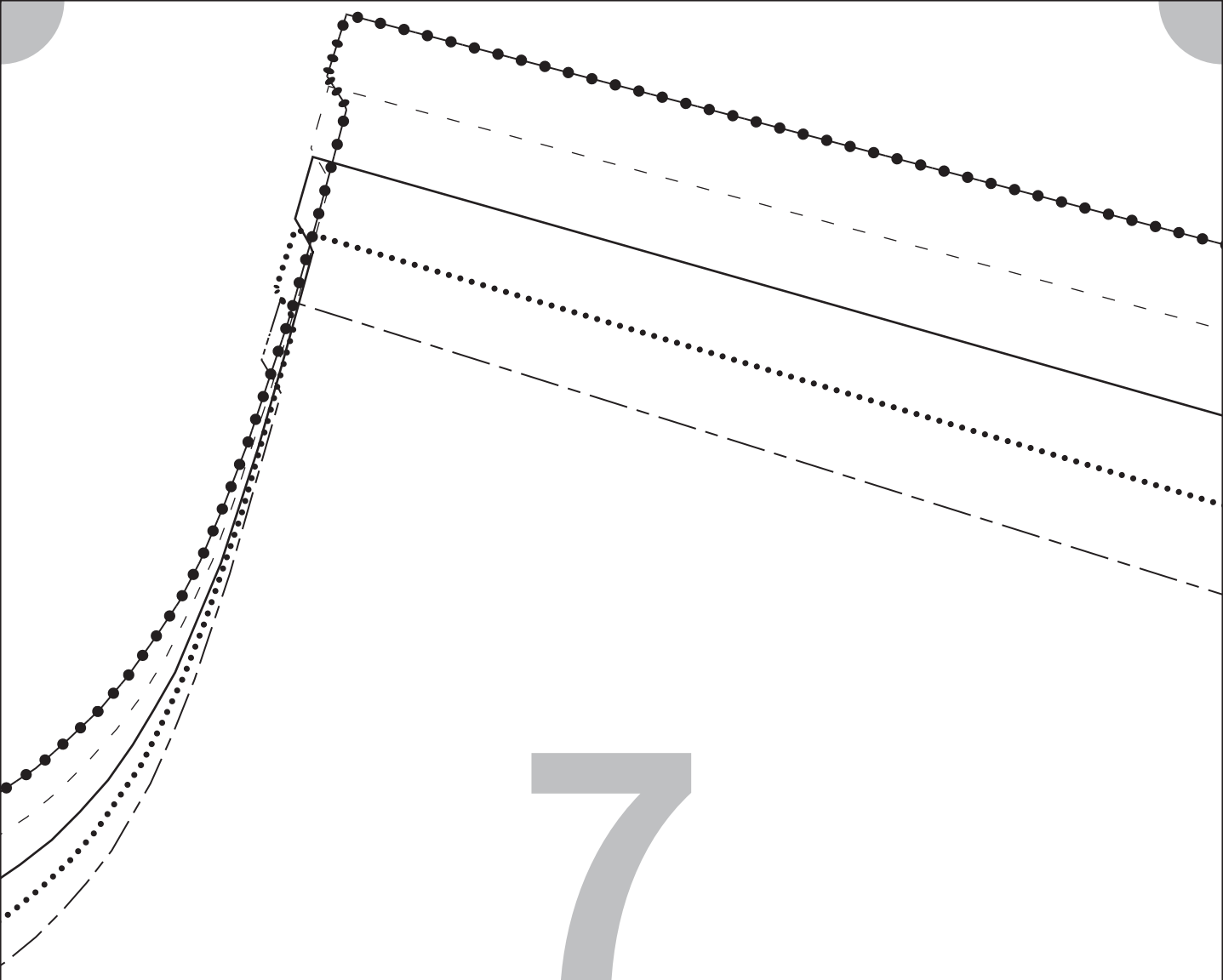


5



6

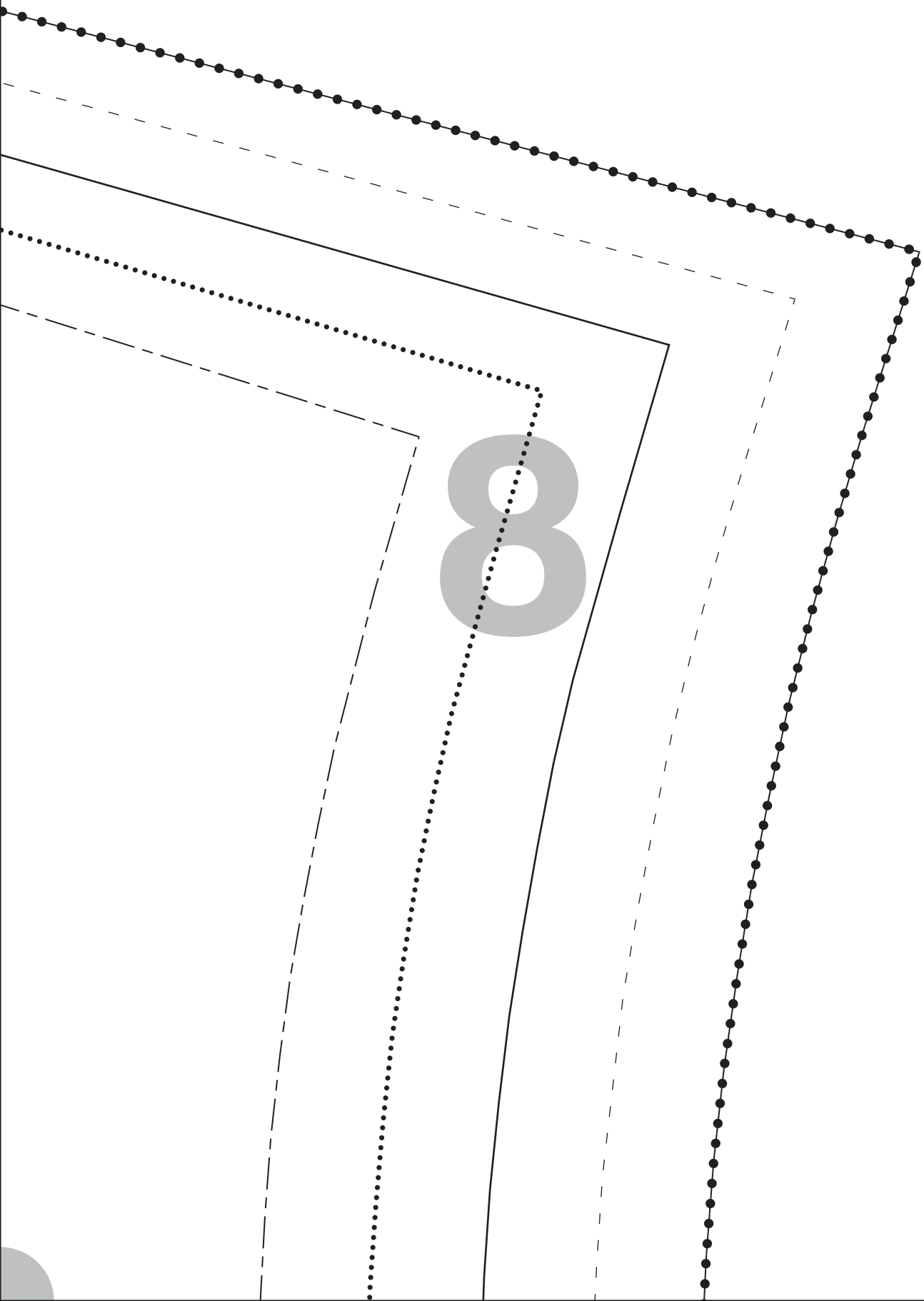


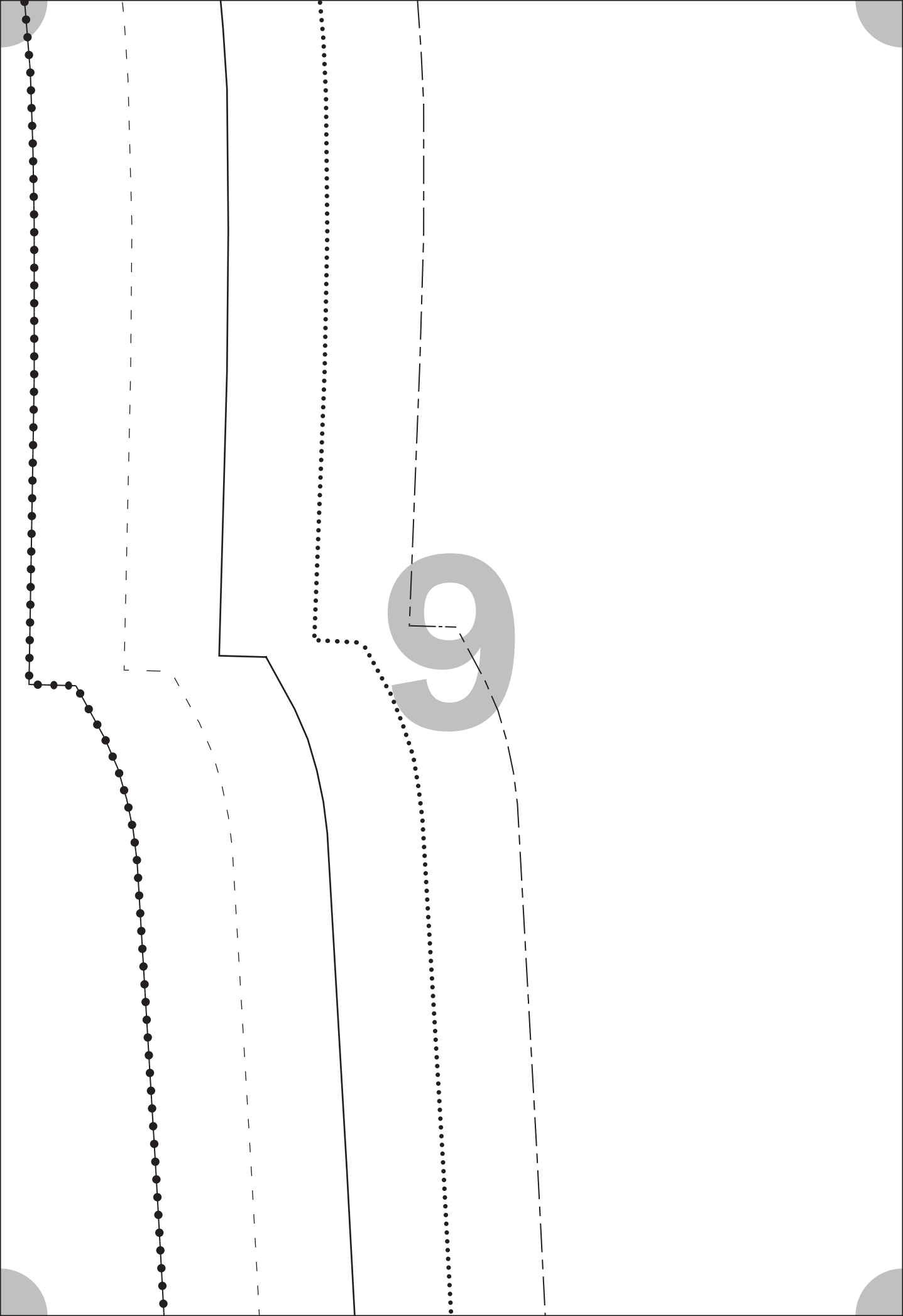
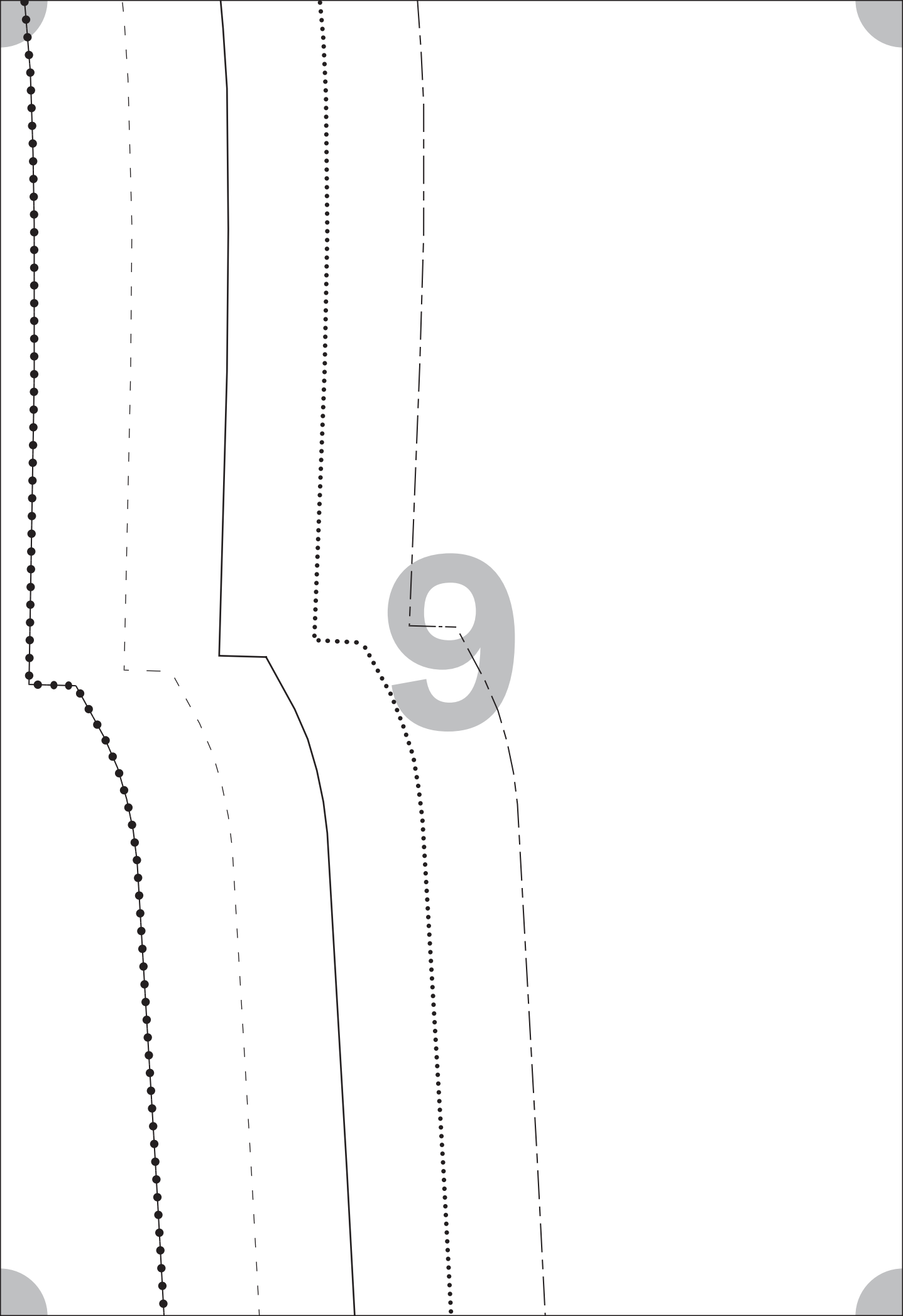
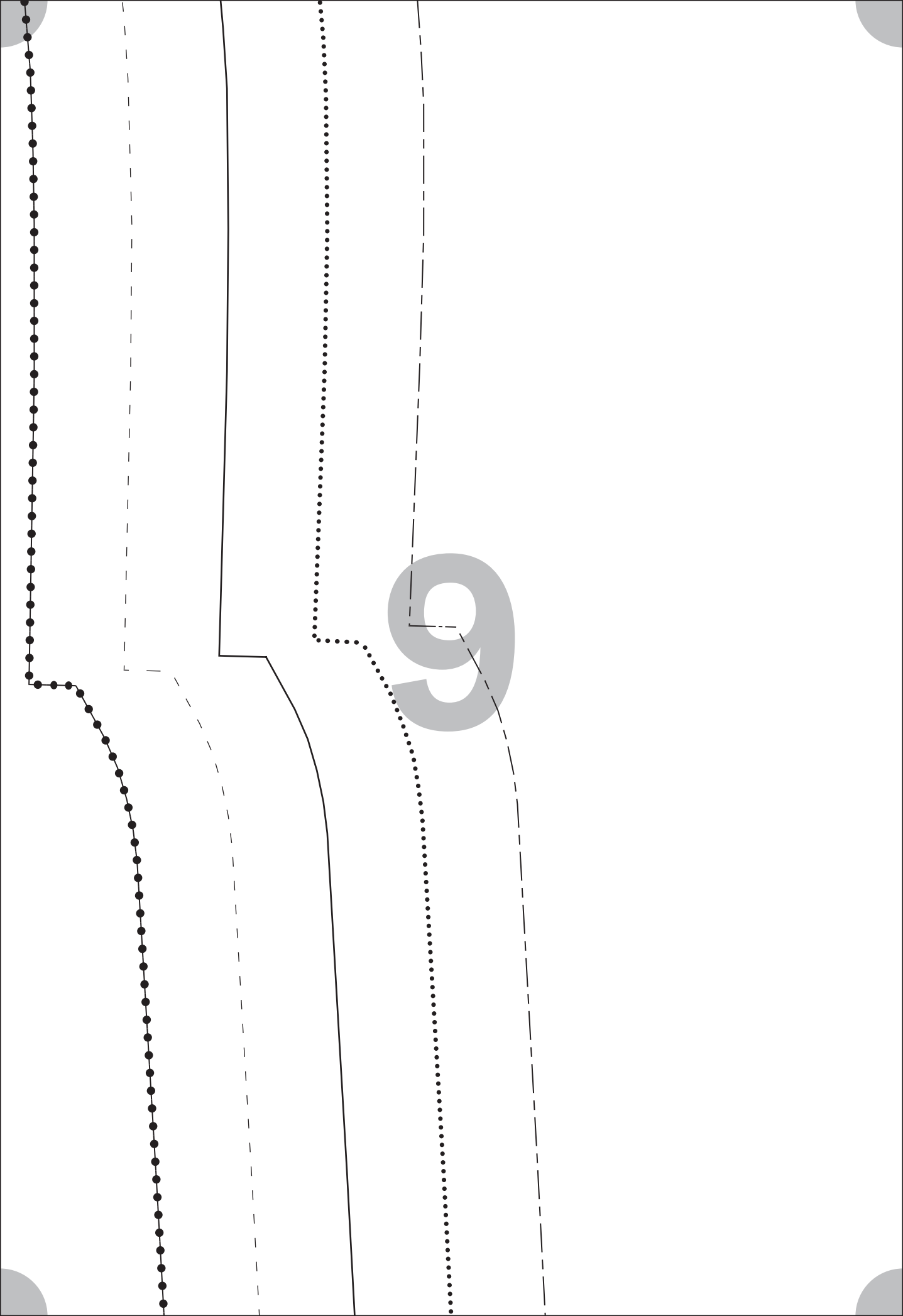
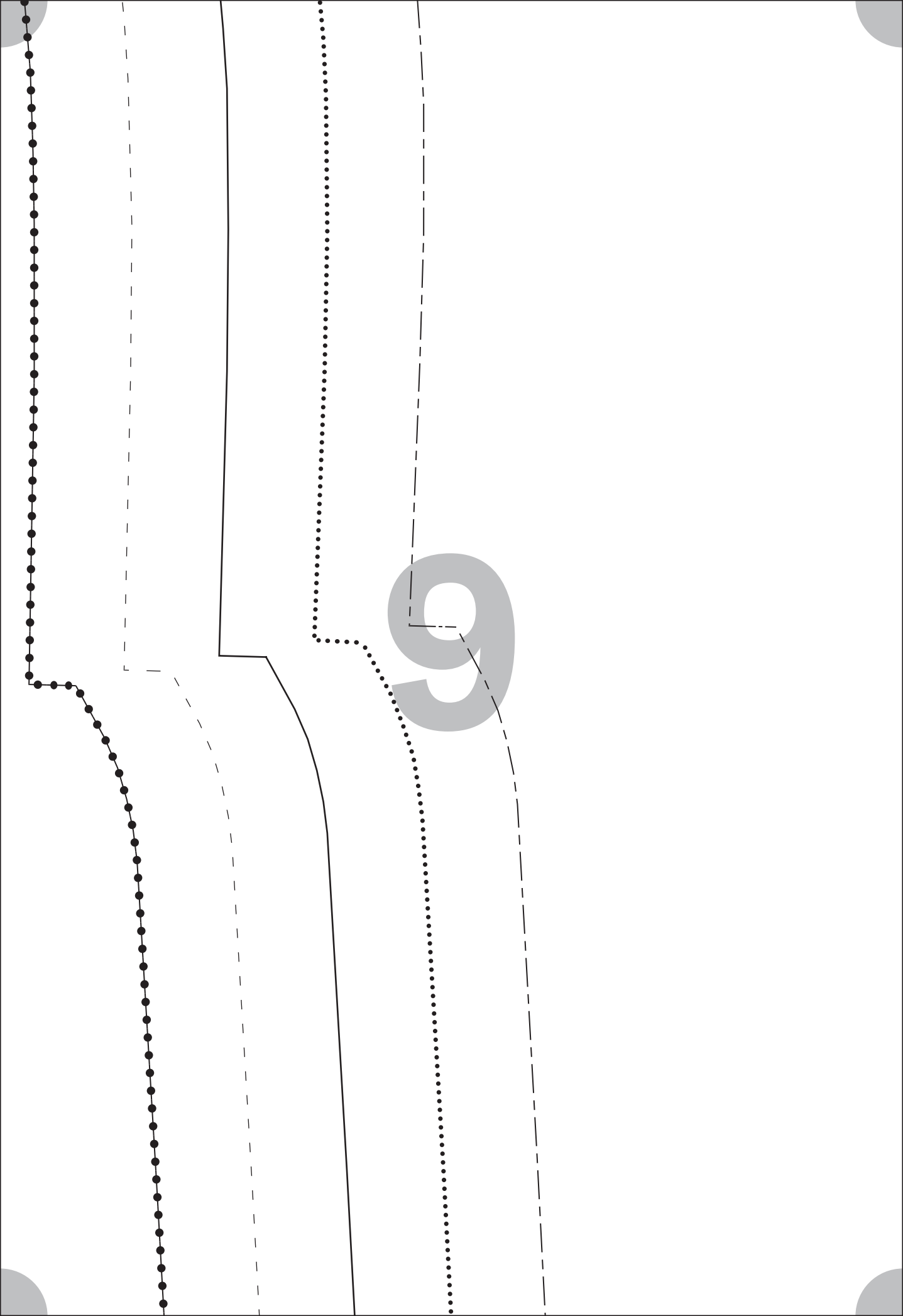


7



8





DIY2408
PART 2
BACK



x1

INCL. SEAM ALLOWANCE

10

FOLD LINE



11

**Self
made[®]**

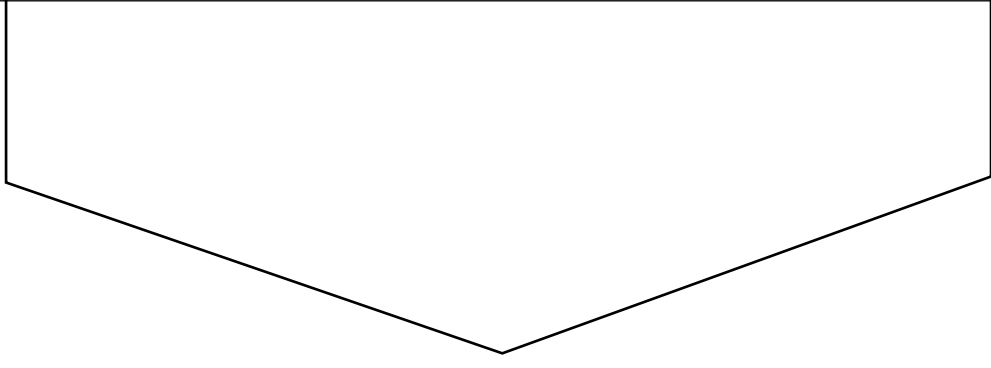
DIY2408
PART 1
FRONT



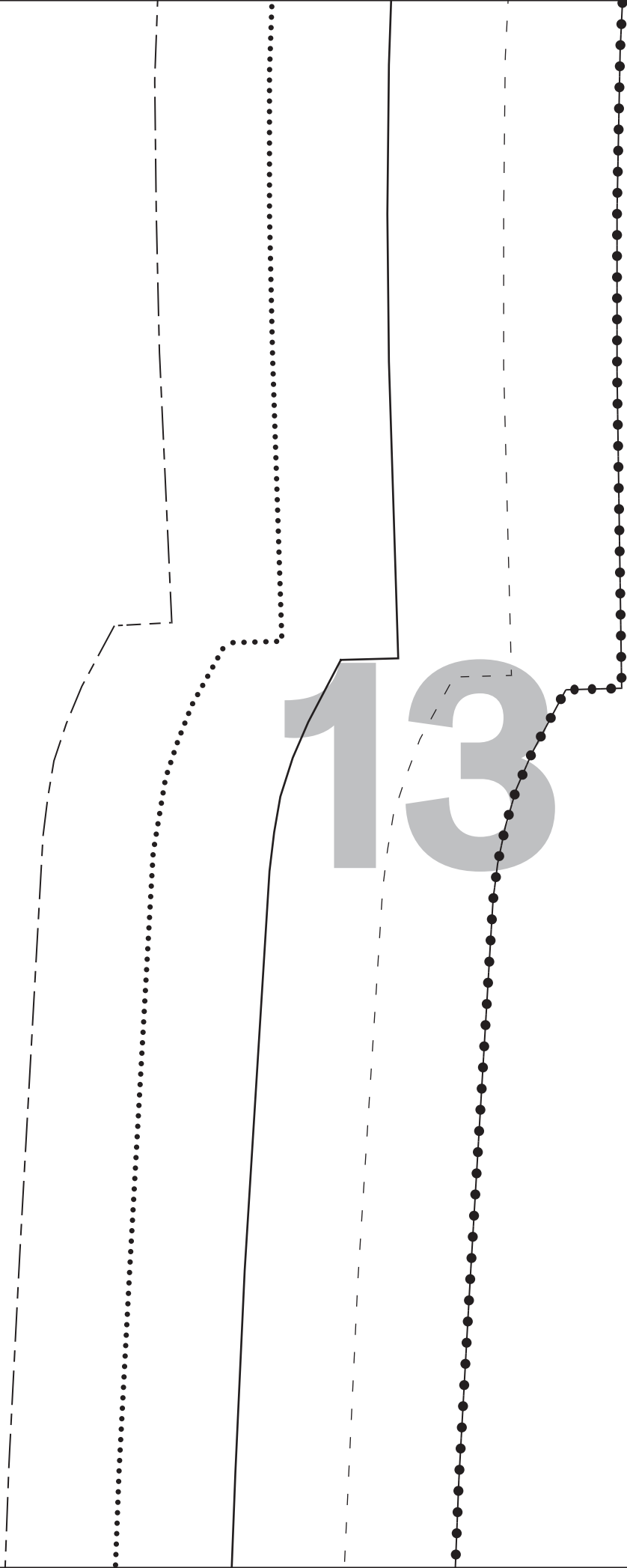
x 2

INCL. SEAM ALLOWANCE

12



13



14

A large dotted-line box containing a grid of dots. In the center of the grid, there is a sequence of symbols: a diamond with a cross inside, followed by a plus sign, another plus sign, another diamond with a cross inside, and a final plus sign. A horizontal solid line is drawn across the grid, positioned below the symbols.

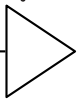
15

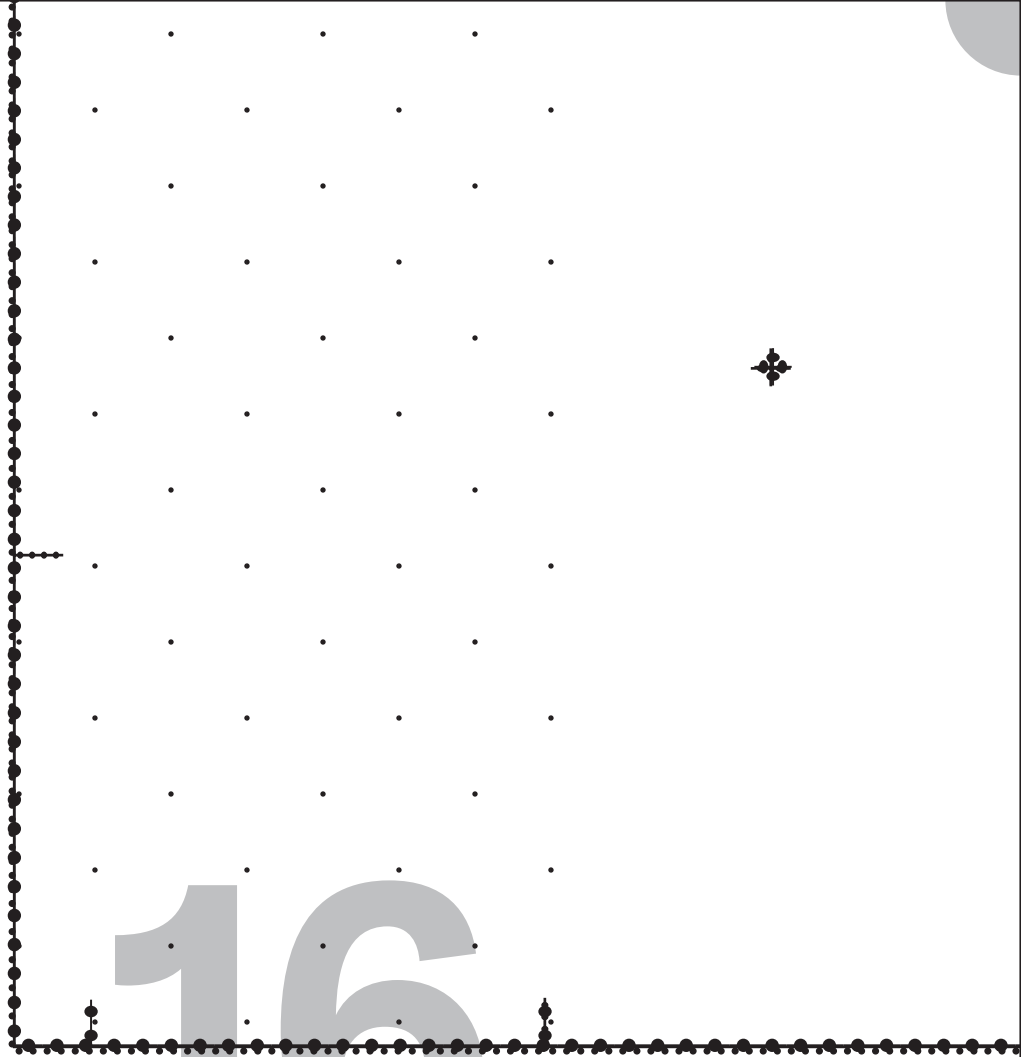
DIY2408
PART 4
COLLAR

✂ x 2

INCL. SEAM ALLOWANCE

FOLD LINE

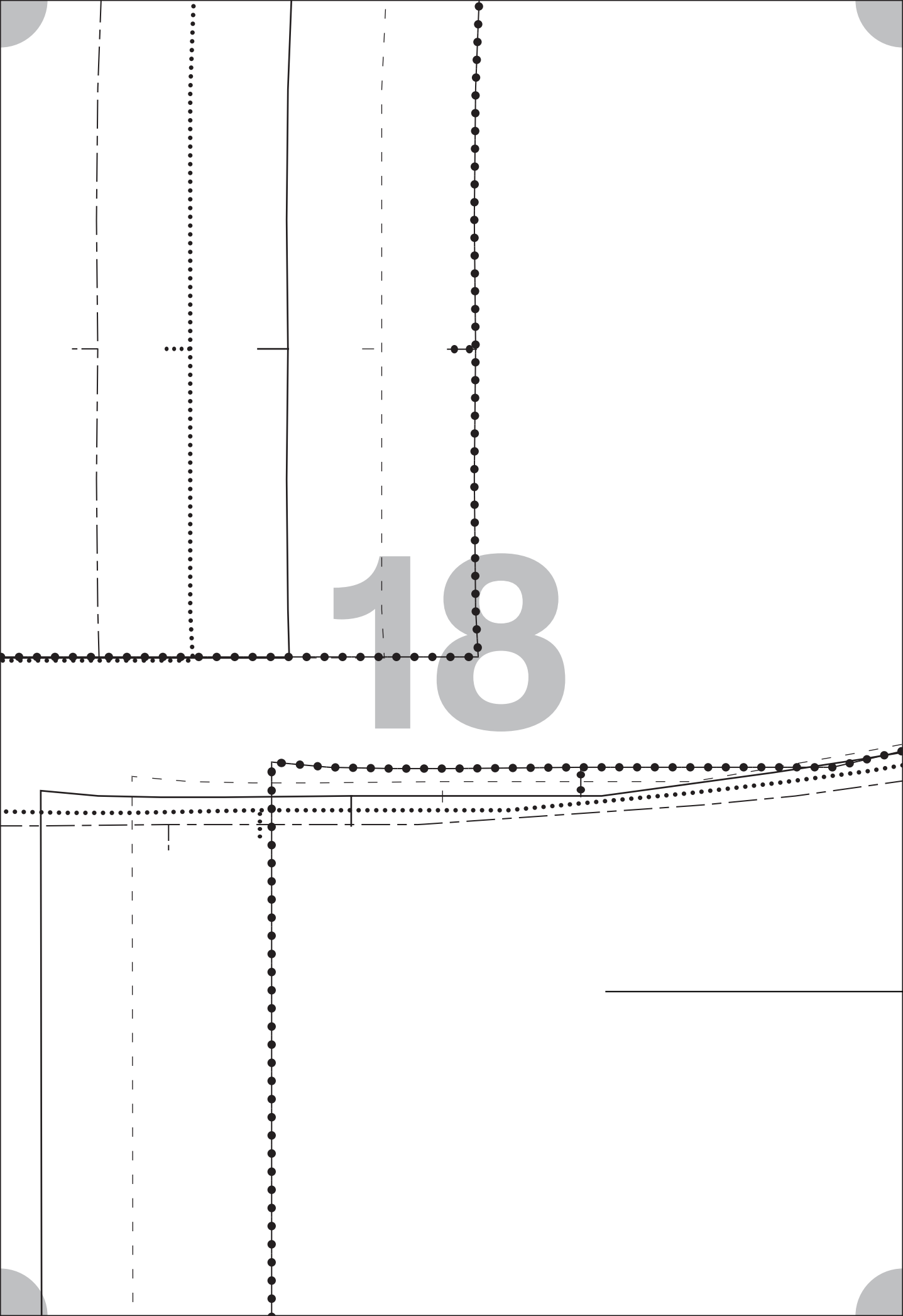


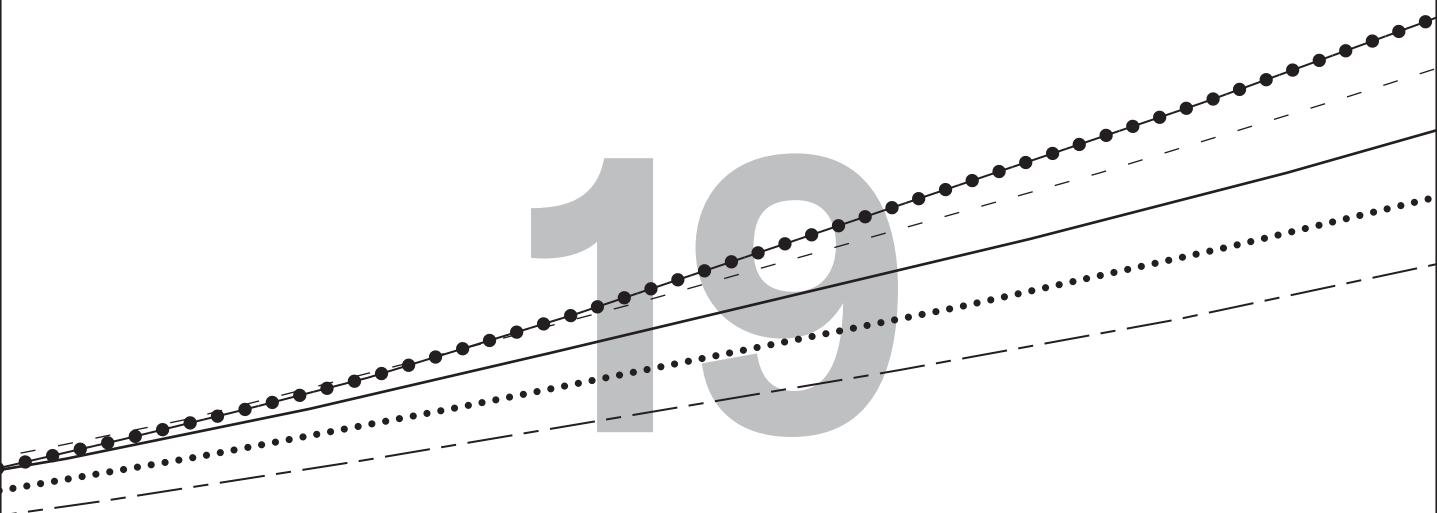


16

17

18





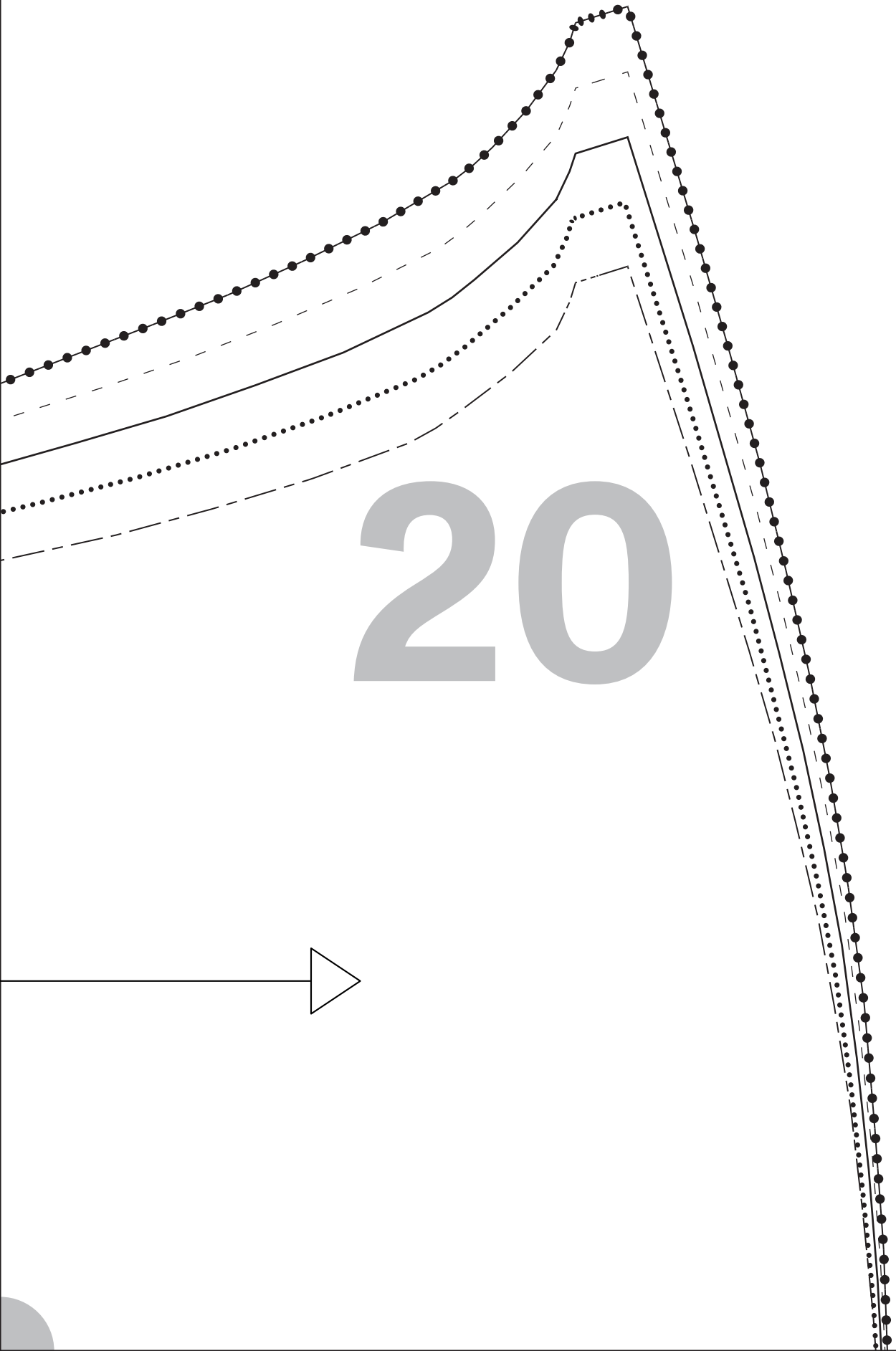
DIY2408

PART 3

SLEEVE

✂ x 2

INCL. SEAM ALLOWANCE



20

21

22

23

FOLD LINE

24

25