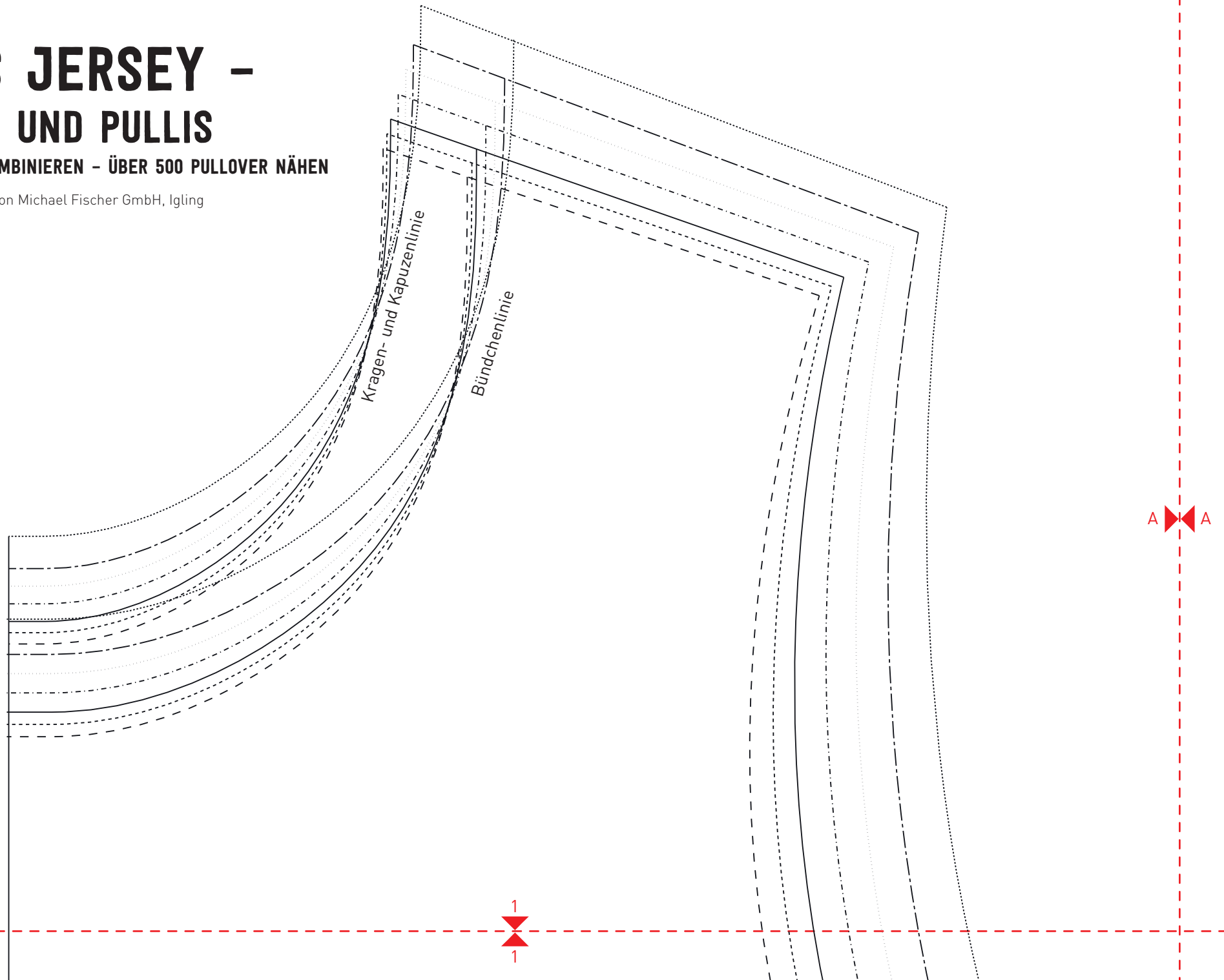


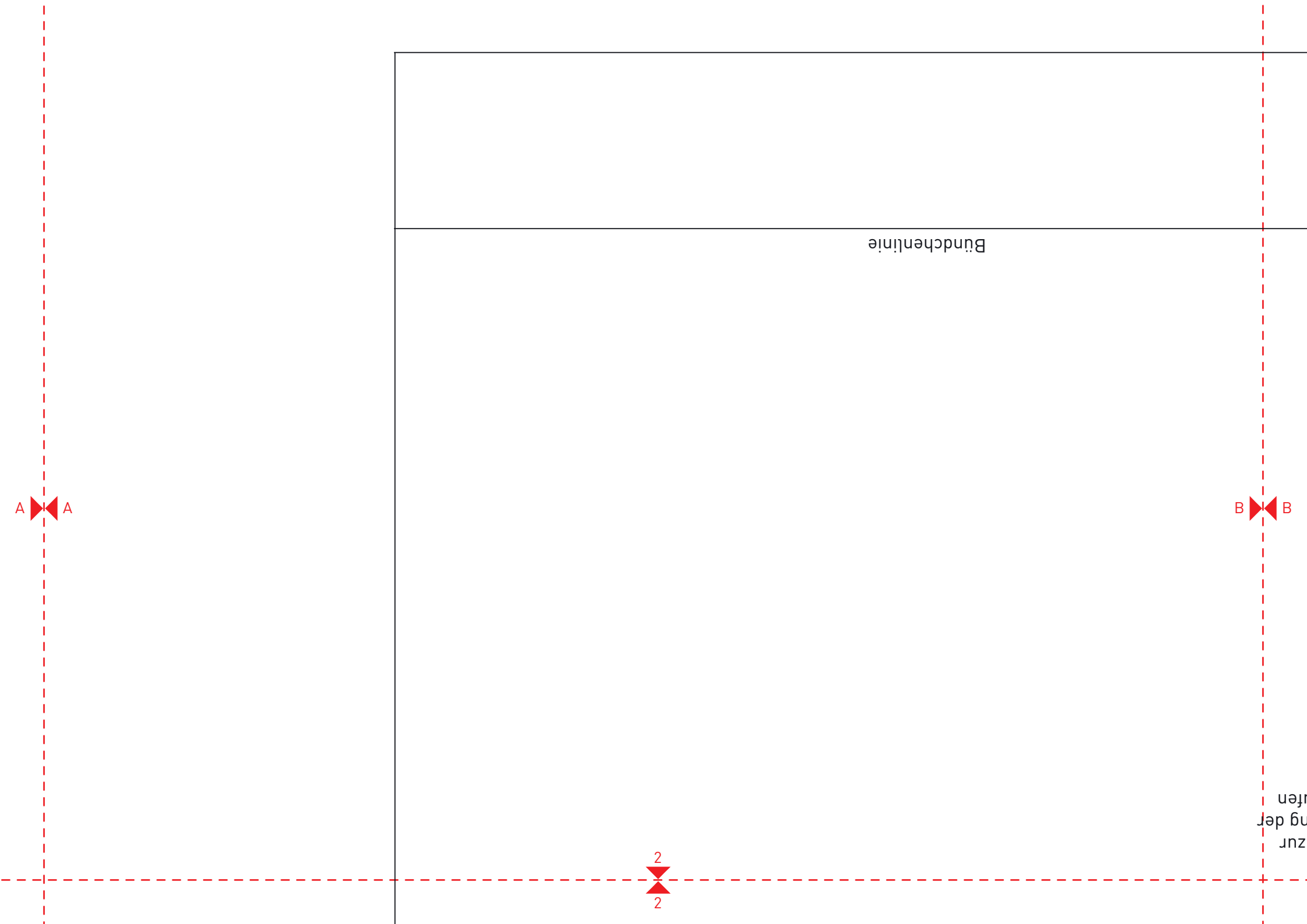
ALLES JERSEY – HOODIES UND PULLIS

SCHNITTEILE KOMBINIEREN – ÜBER 500 PULLOVER NÄHEN

Alle Rechte bei ©Edition Michael Fischer GmbH, Igling

MARIE, S. 71





Bündchenlinie

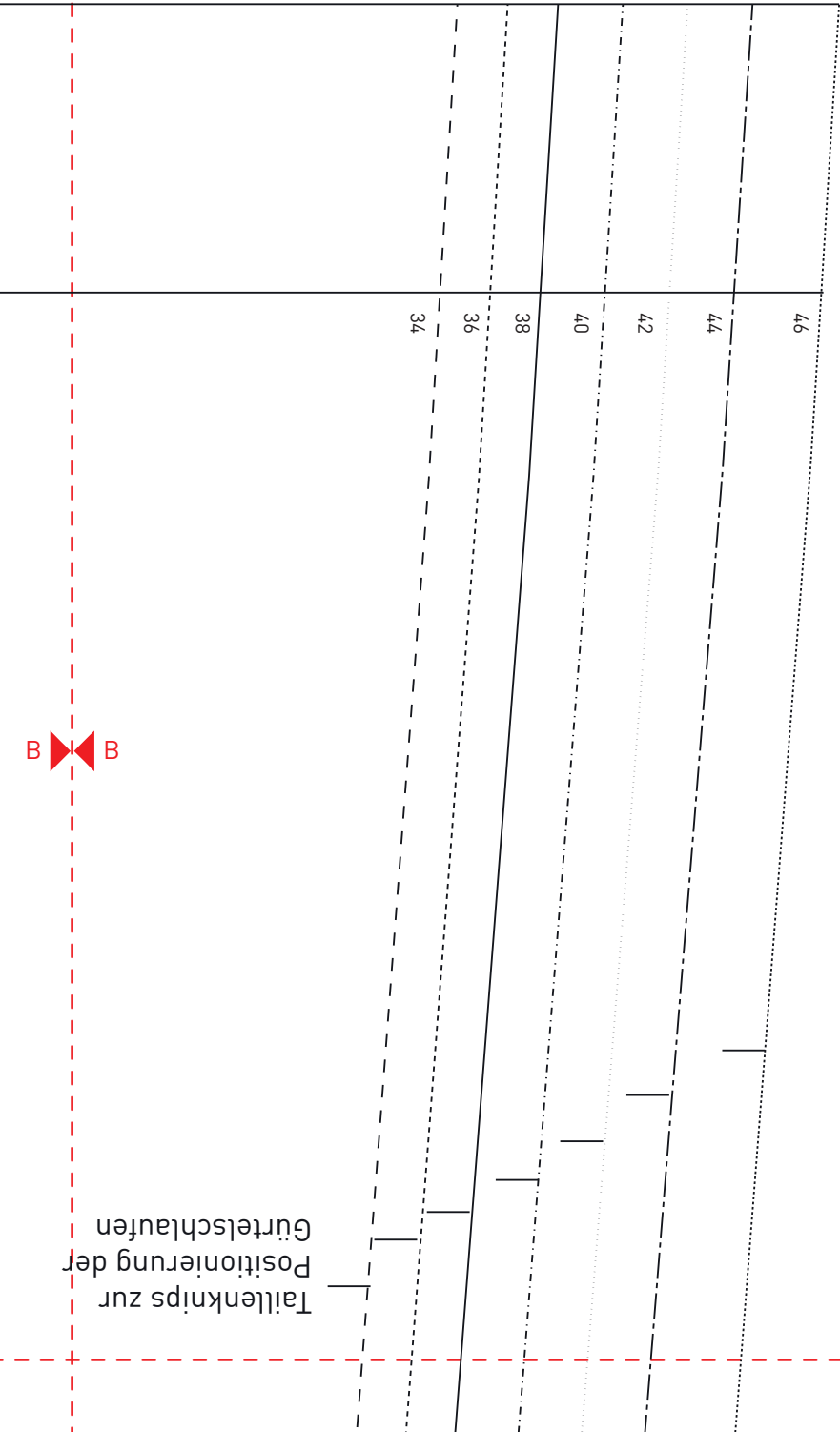
A

B

2

2

zur
ng der
nen



B

3

3

46

44

42

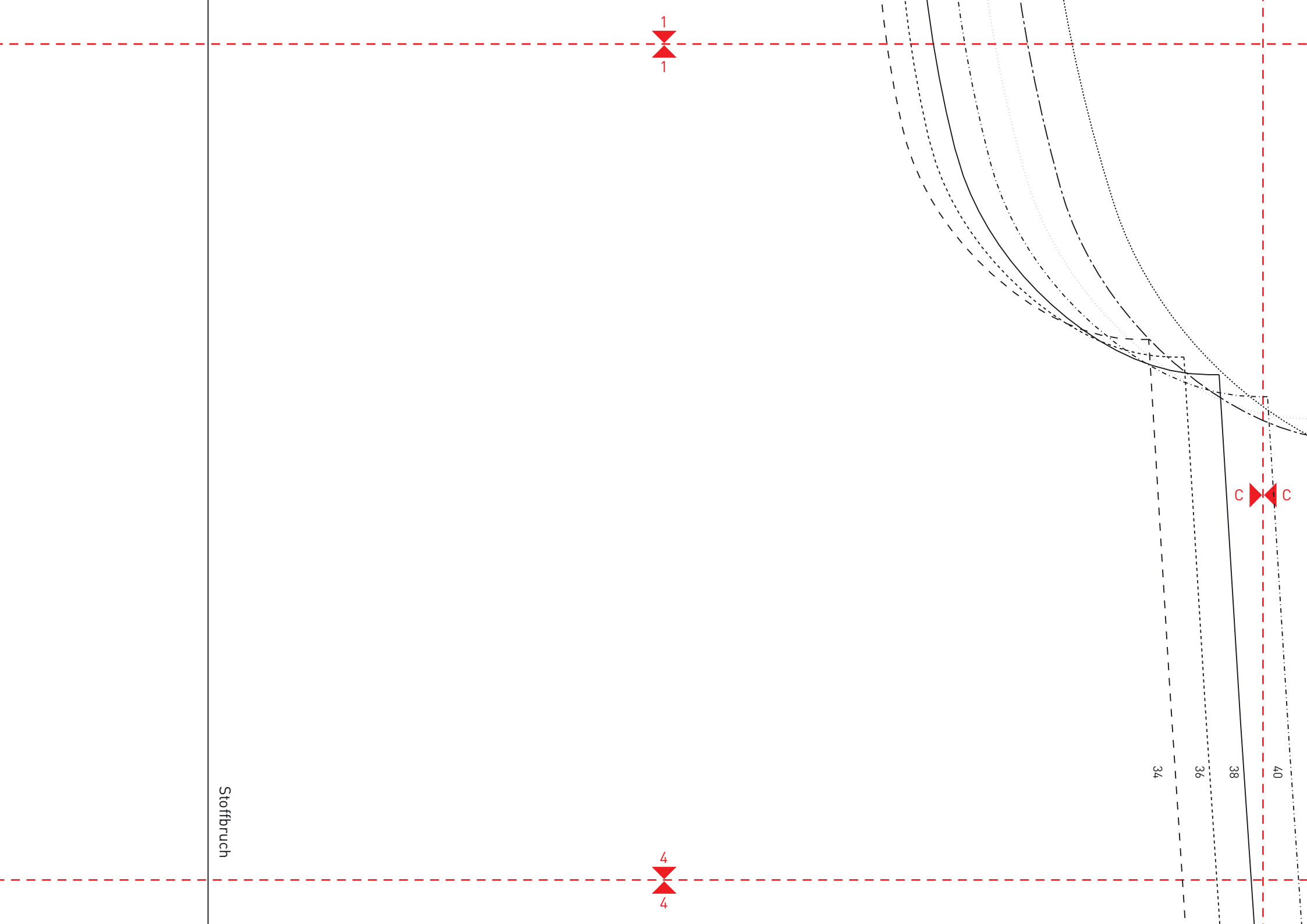
40

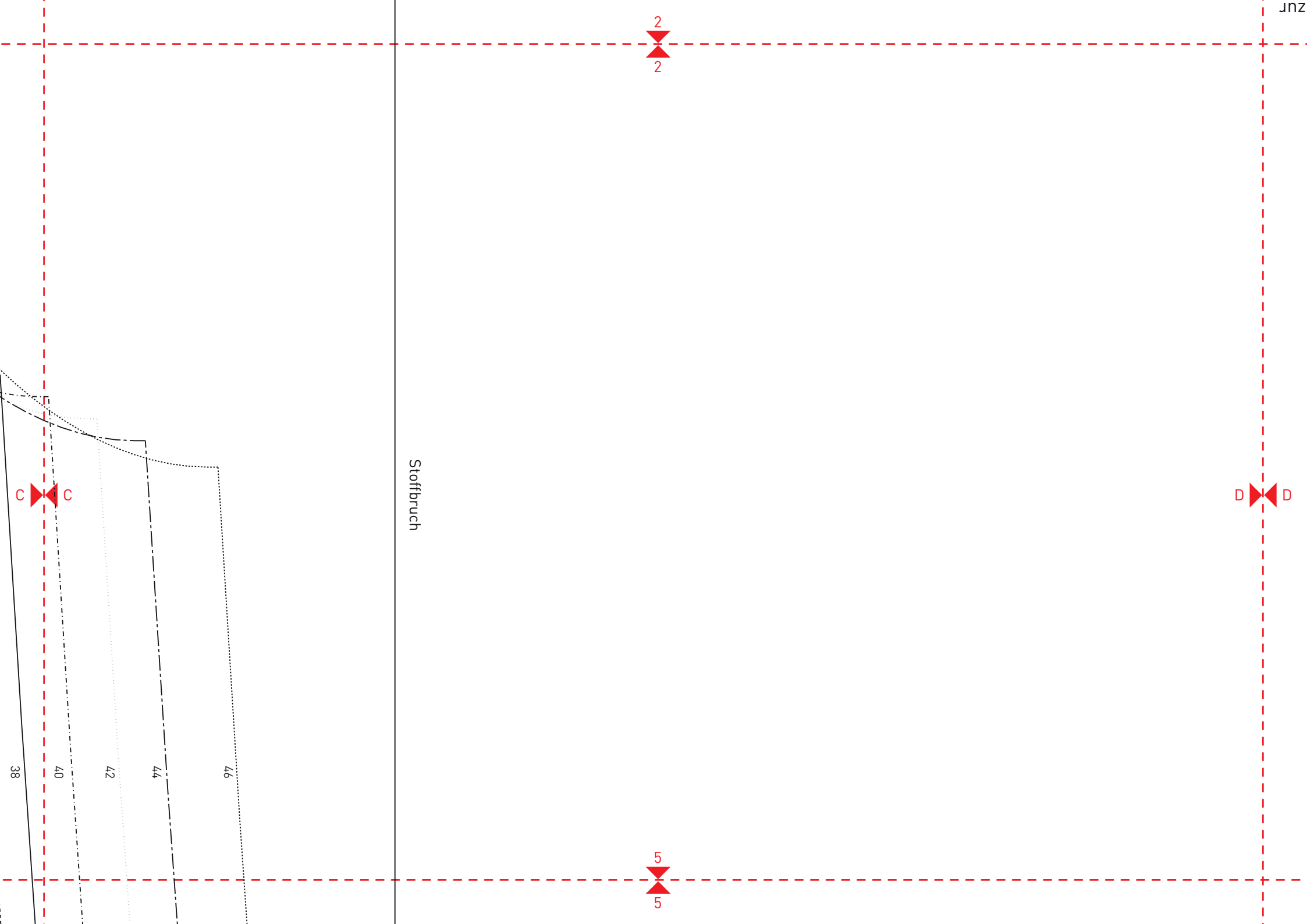
38

36

34

Tailenknips zur
Positionierung der
Gürtelschlaufen





2

2

D

D

Stoffbruch

C

C

38

40

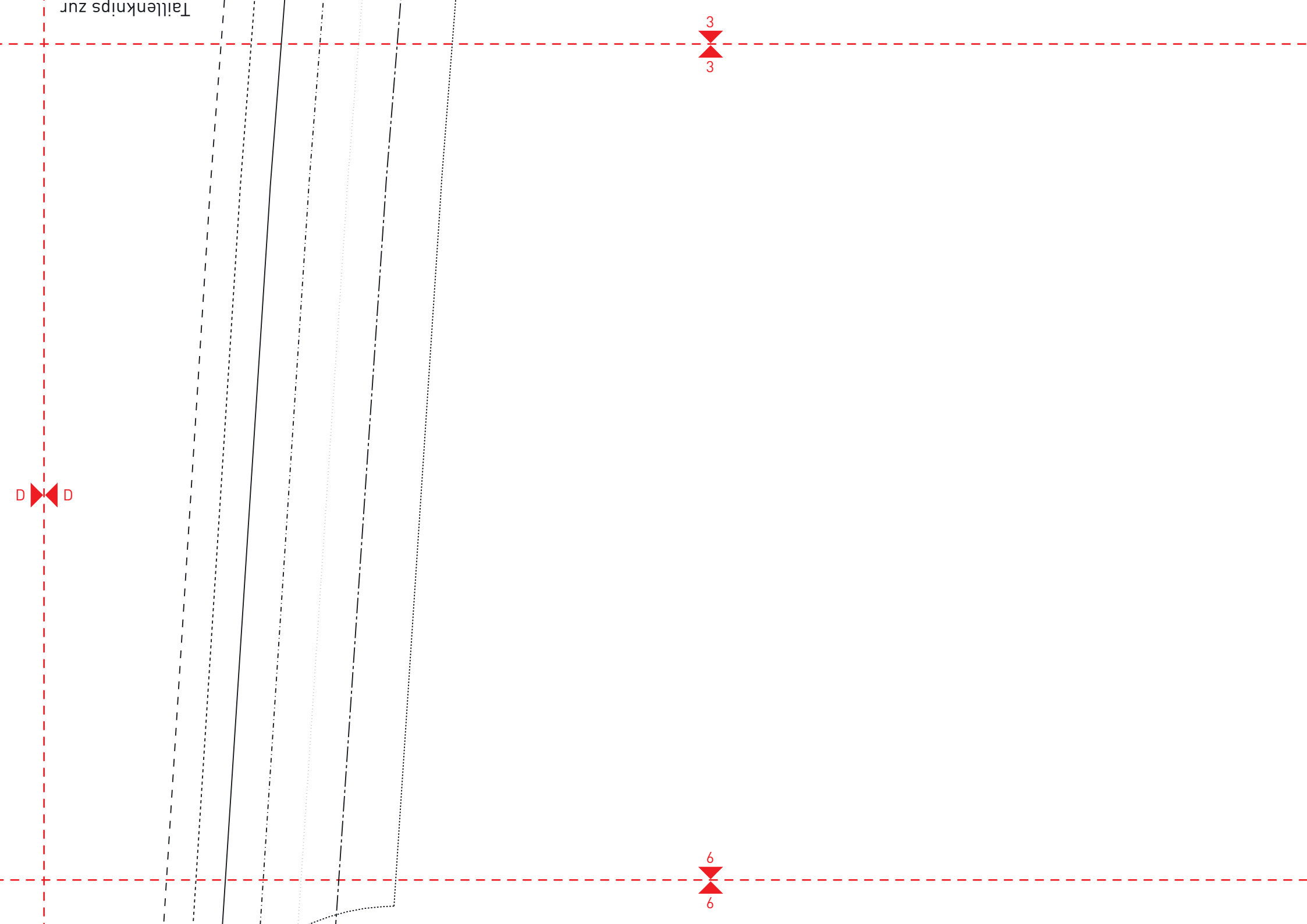
42

44

46

5

5



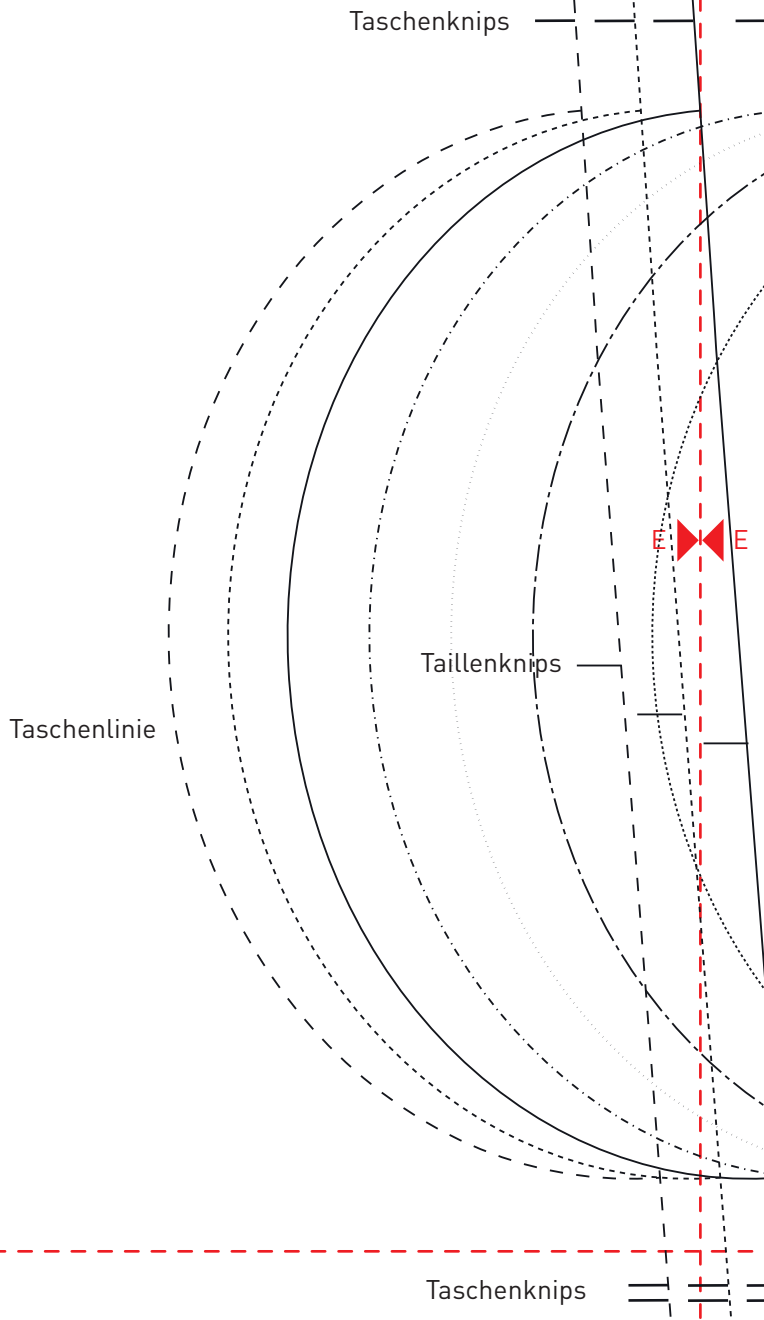
uph

4
4

Fadenlauf
↓

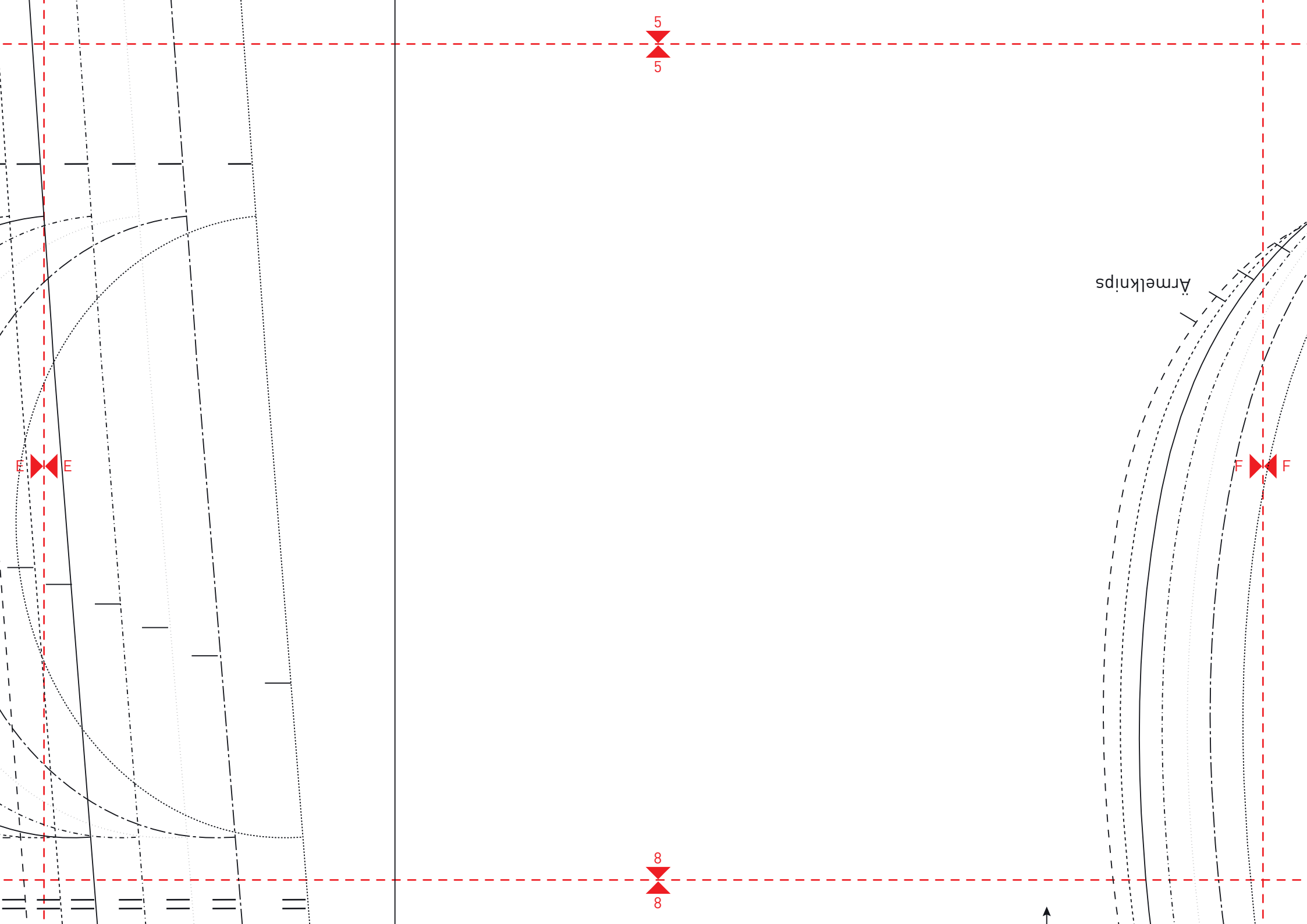
PULLOVER GRUNDSCHNITT

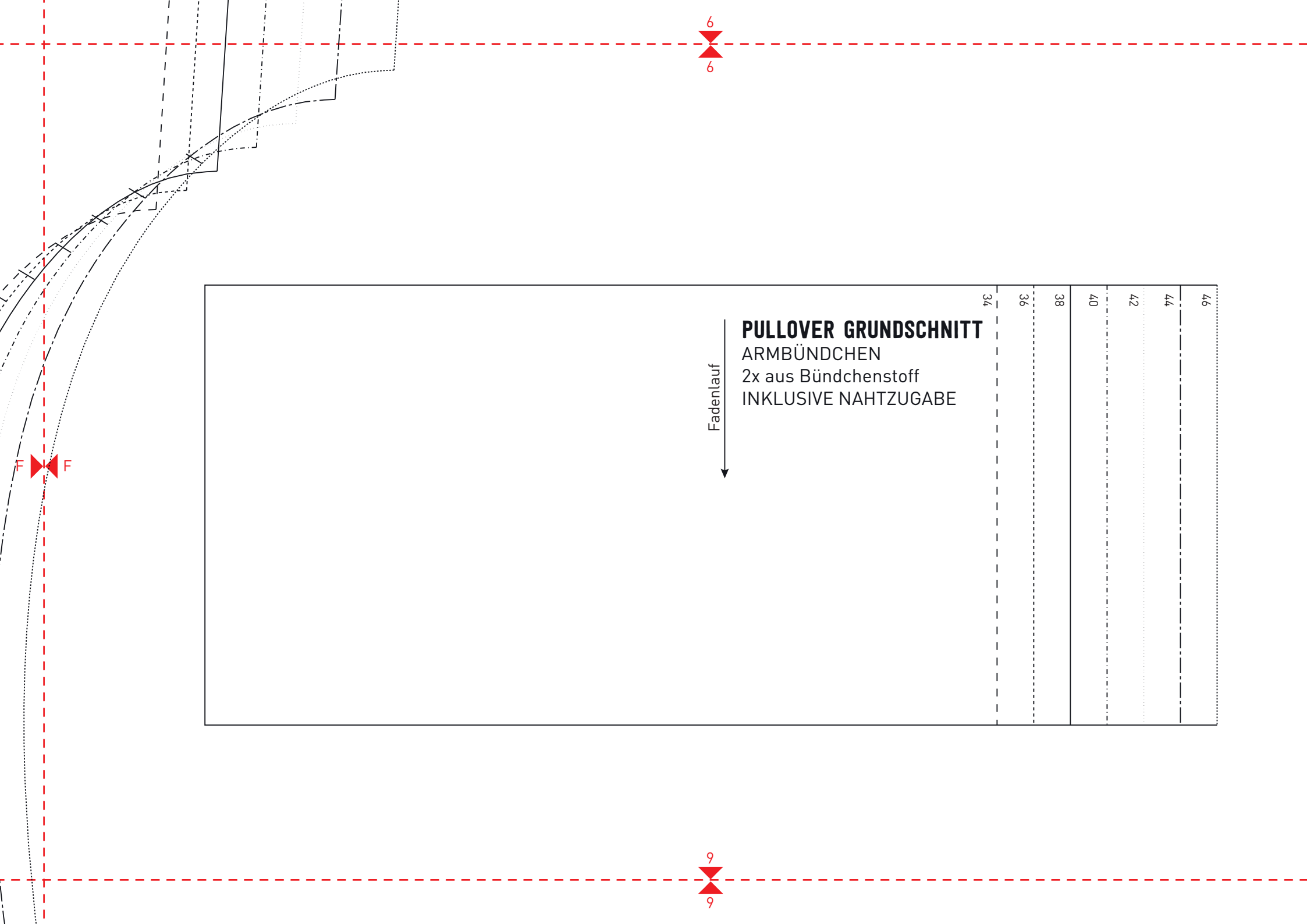
VORDERTEIL
1x aus Hauptstoff im Bruch



7
7

Taschenknips





6
6

F

9
9

Fadenlauf
↓

PULLOVER GRUNDSCHNITT
ARMBÜNDCHEN
2x aus Bündchenstoff
INKLUSIVE NAHTZUGABE

34

36

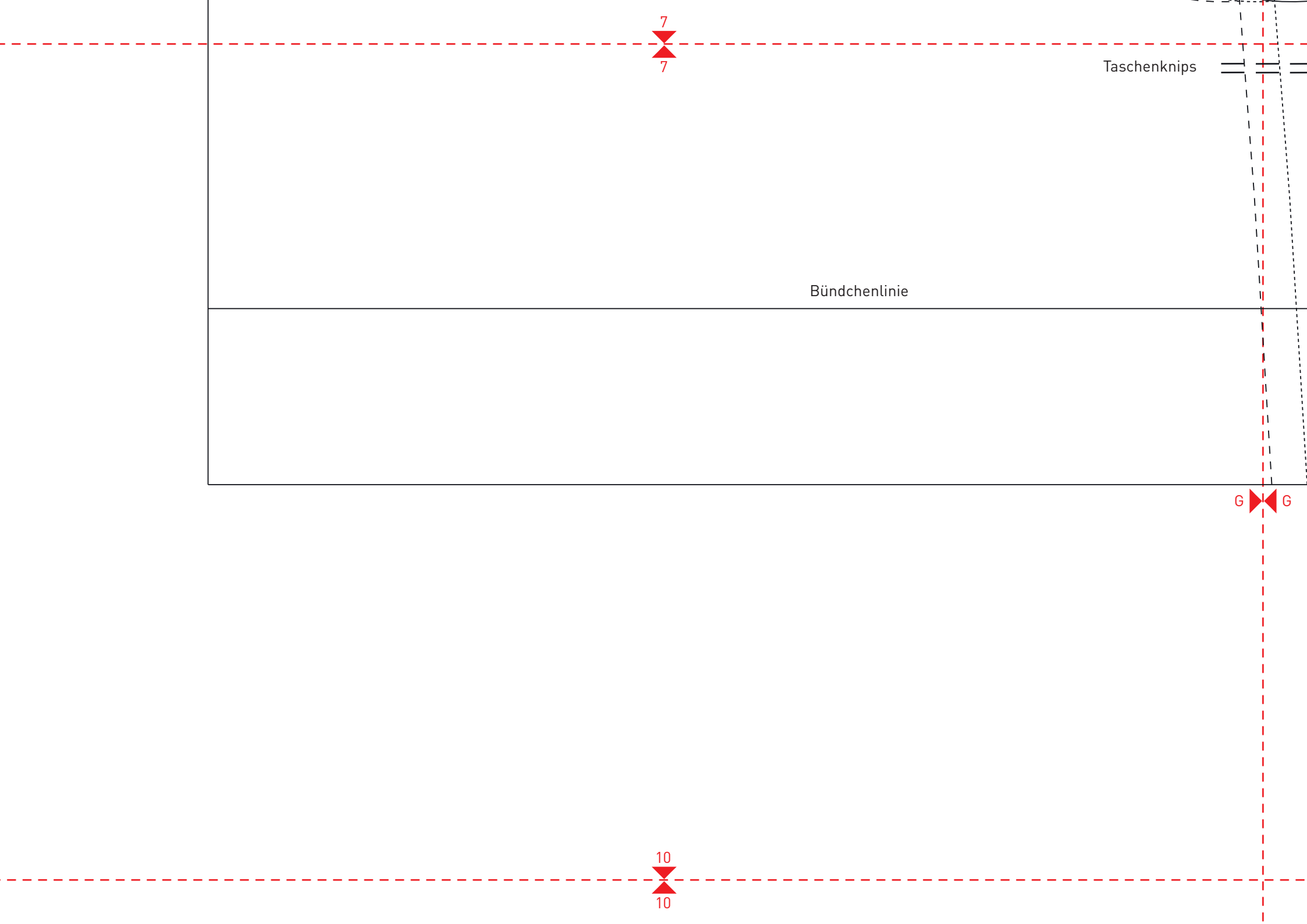
38

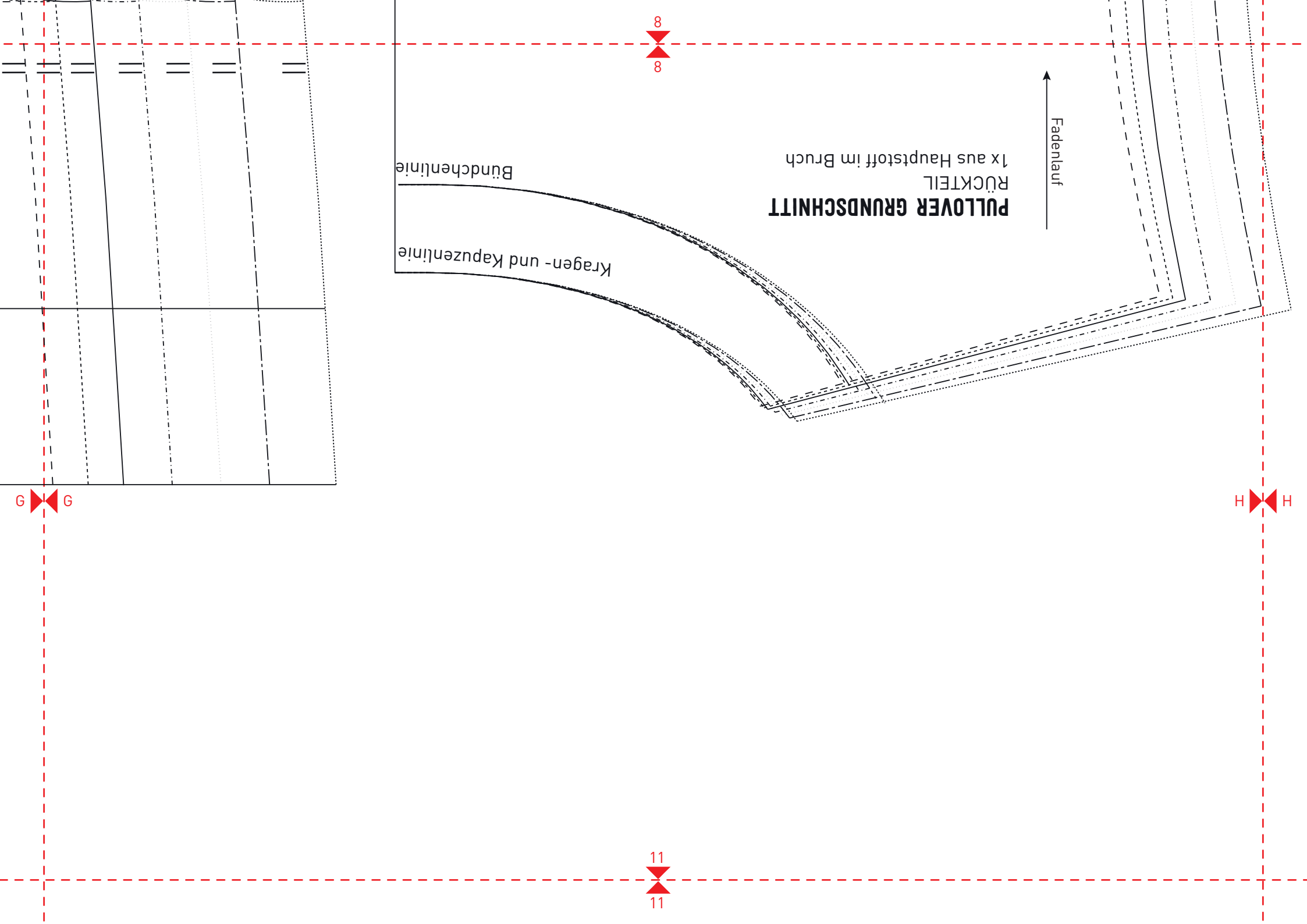
40

42

44

46





PULLOVER GRUNDSCHNITT
RÜCKTEIL
1x aus Hauptstoff im Bruch

Fadenlauf ↑

Kragen- und Kapuzenlinie
Bündchenlinie

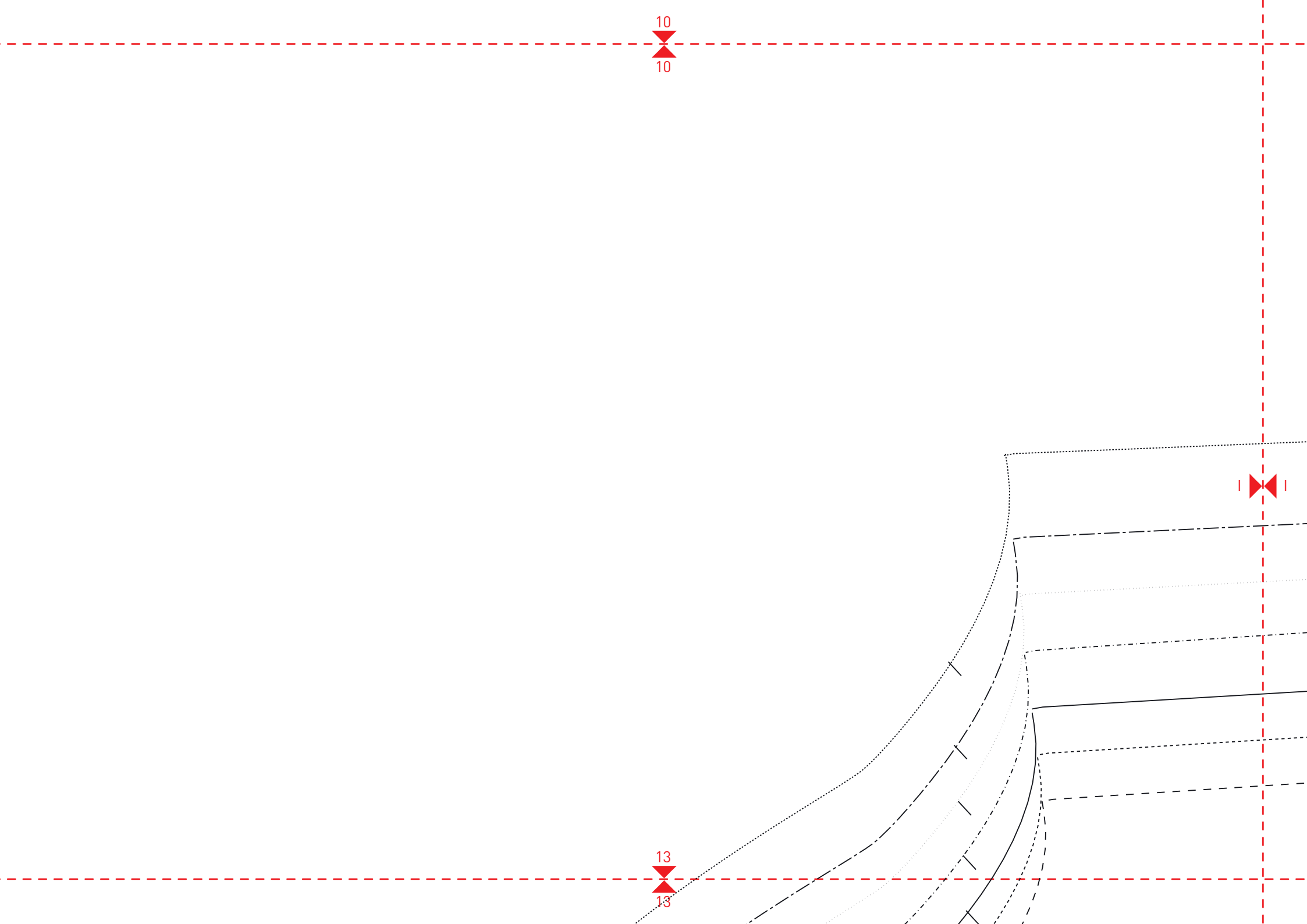
G G

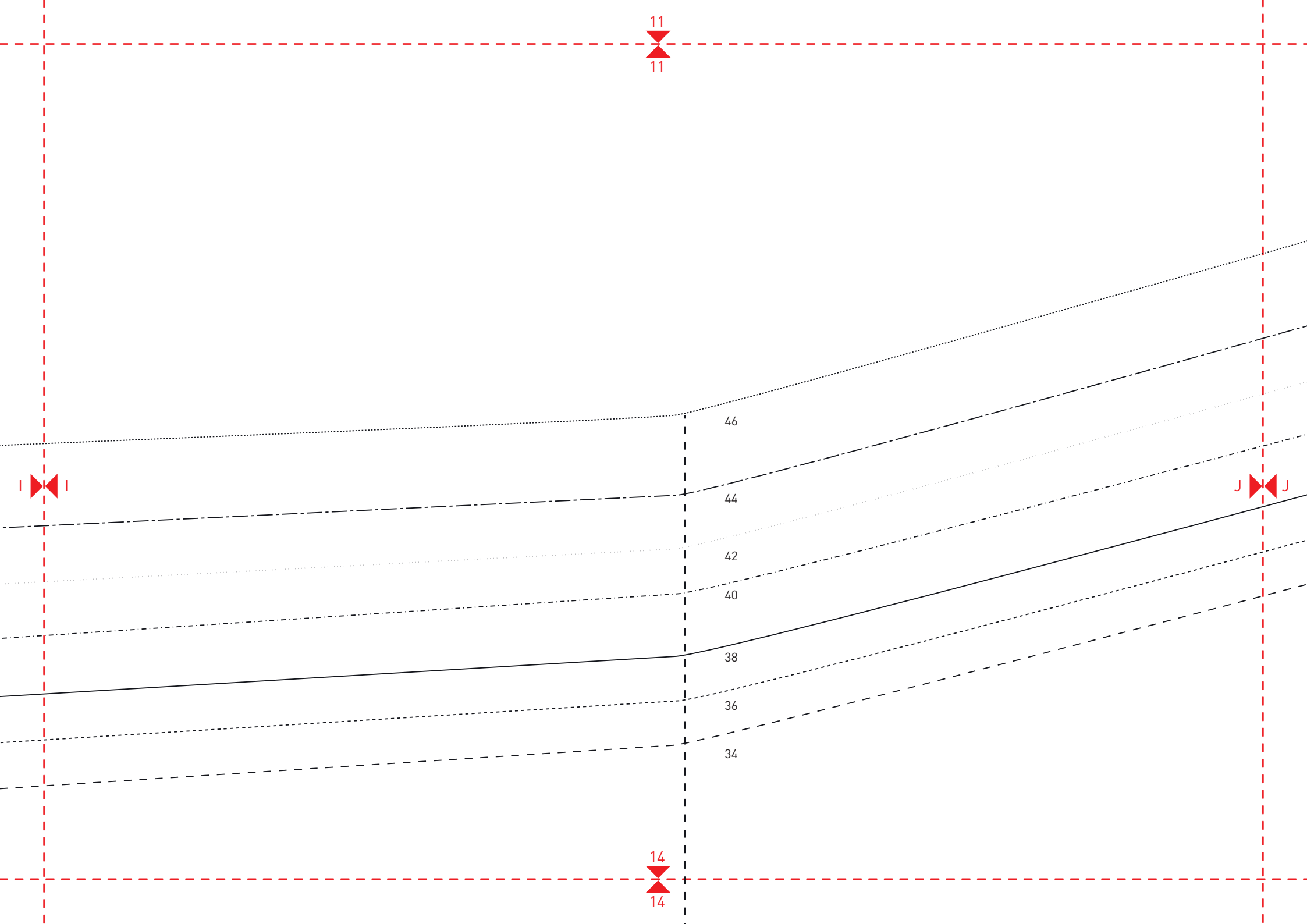
H H

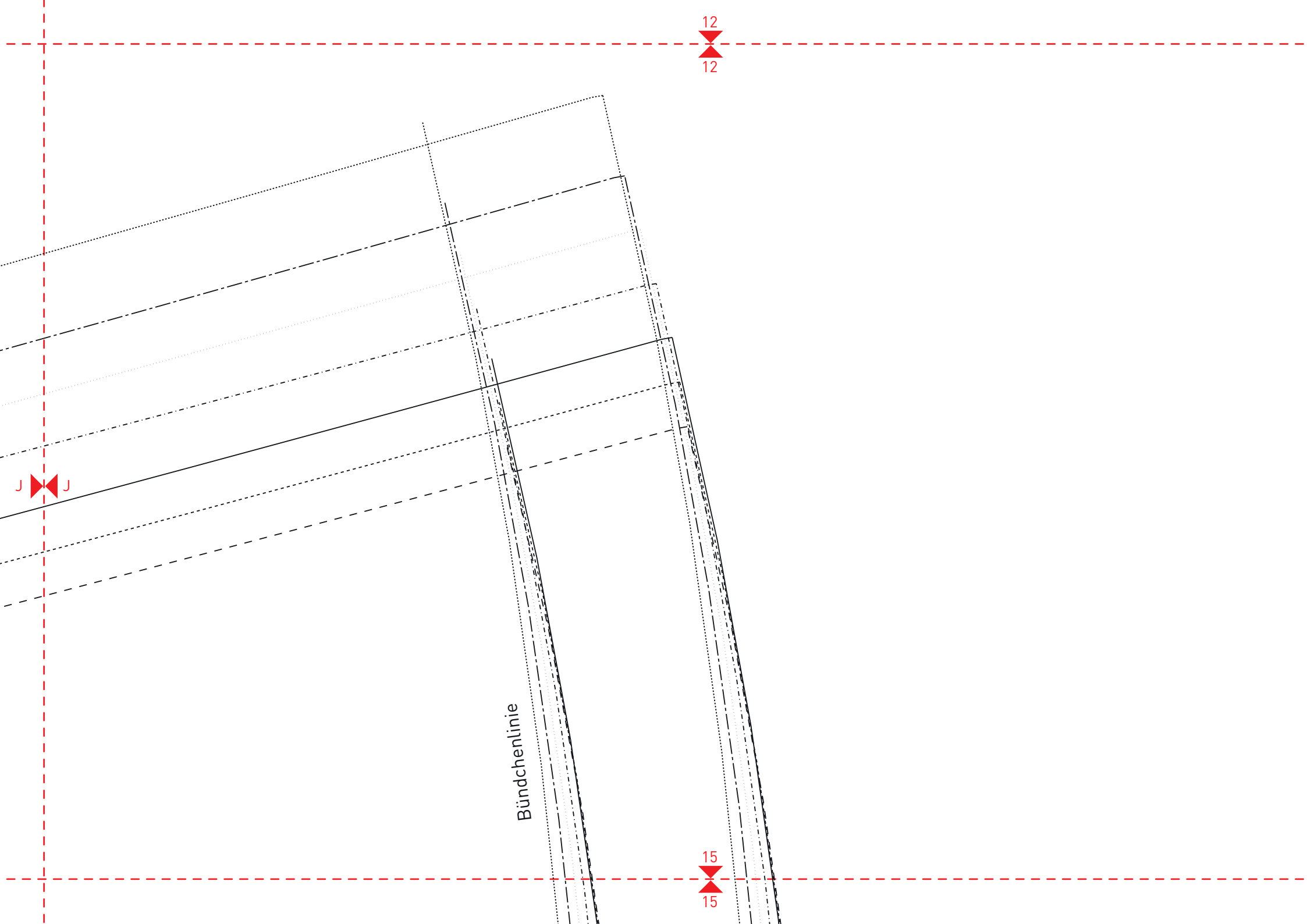
8
8

11
11







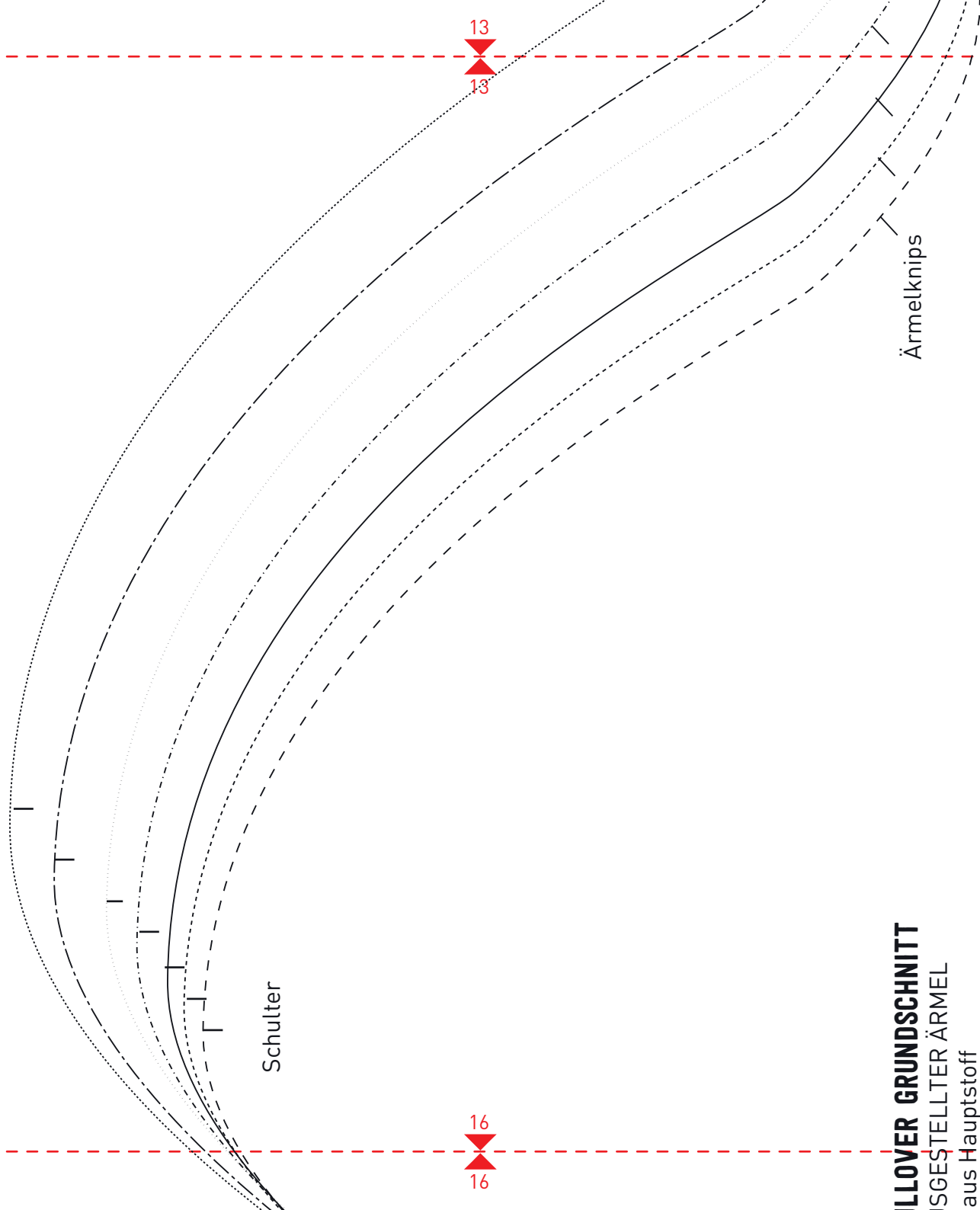


12
12

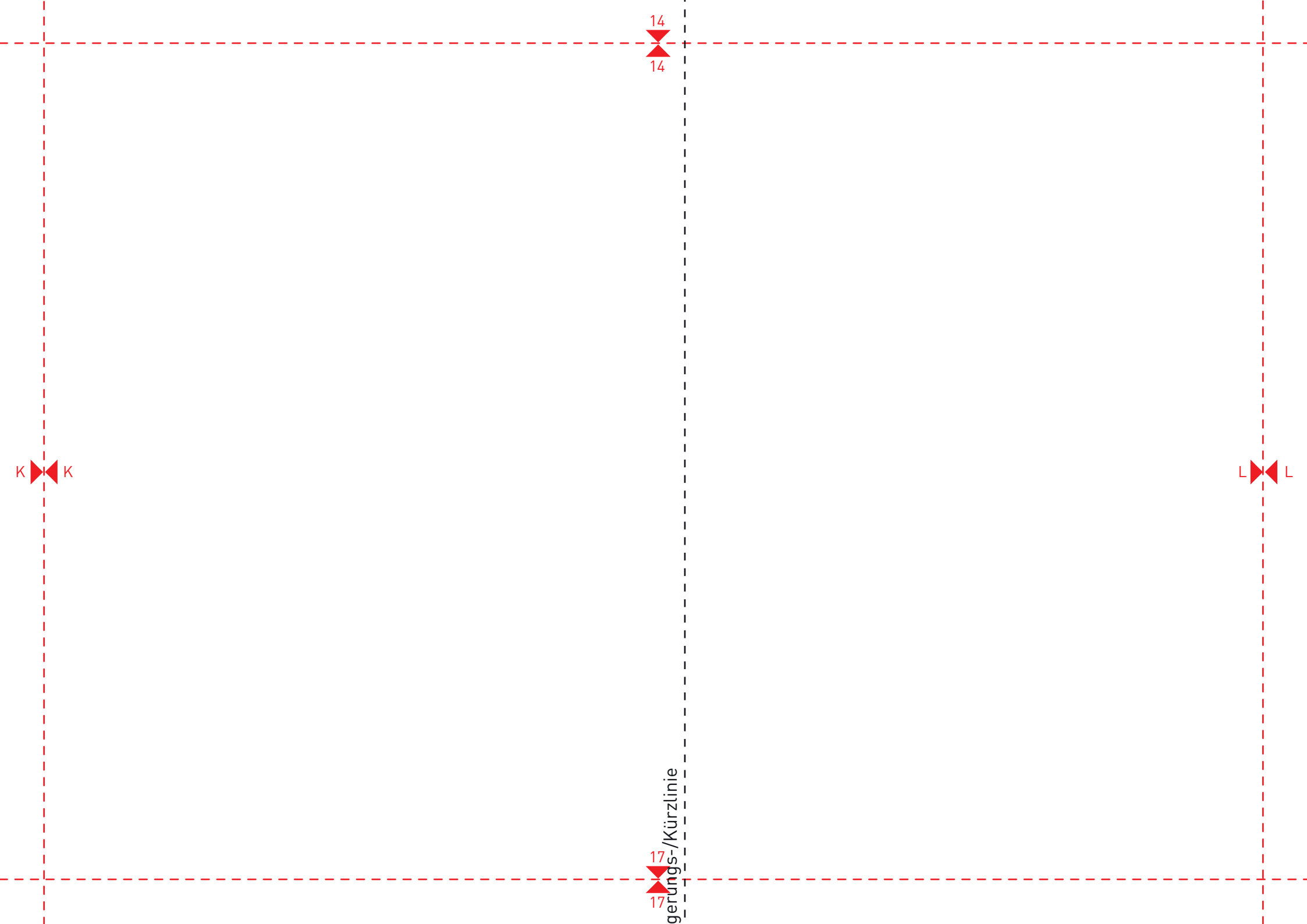
J J

15
15

Bündchenlinie



ÄRMELGRUNDRISS
GEWEBTER ÄRMEL
aus Hauptstoff



14

14

14

K

K

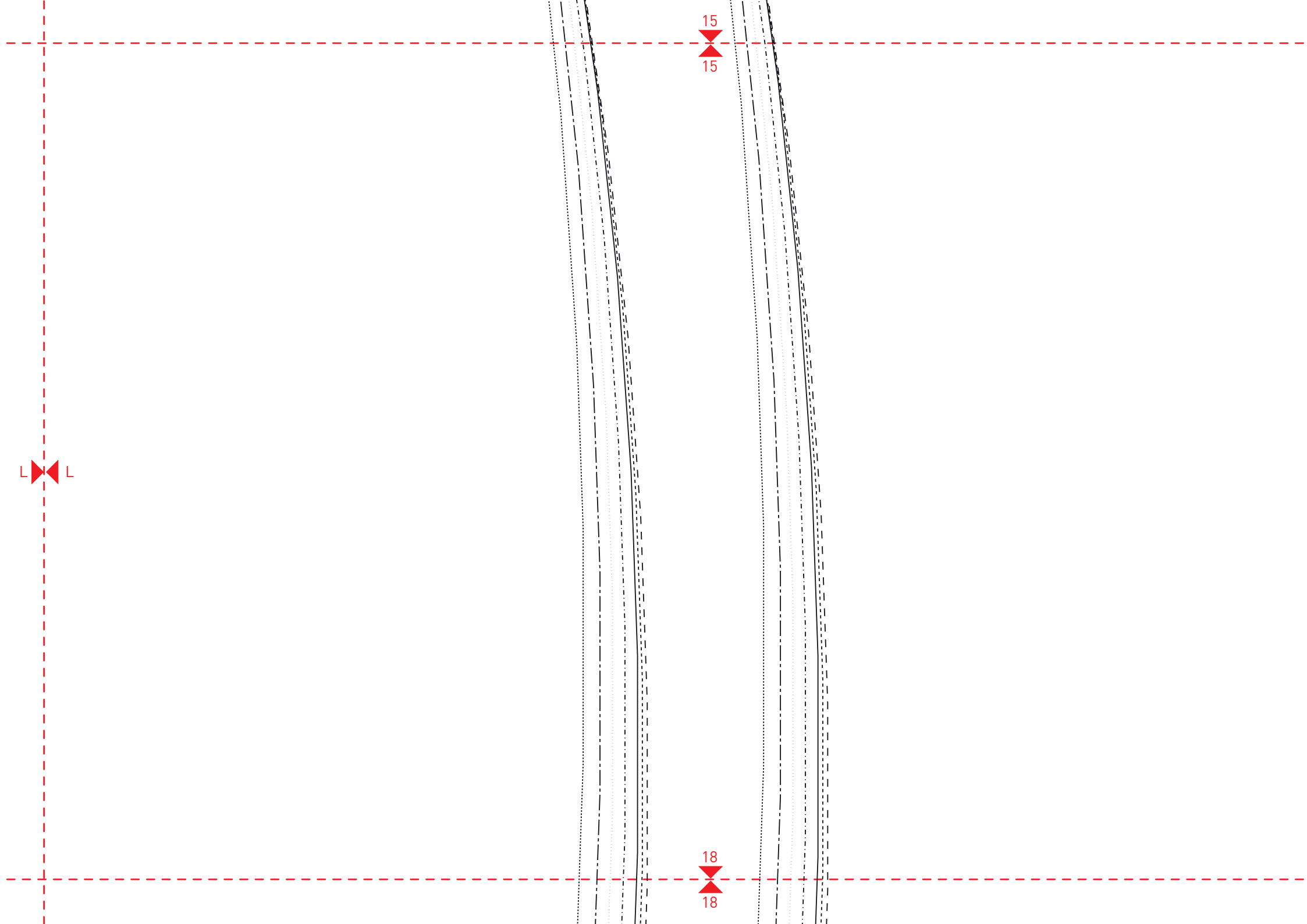
L

L

17

17

gerungs-/Kürzlinie



PULLOVER G
AUSGESTELLT
2x aus Haupt:

Fadenlauf →

16
16

M M

19
19

