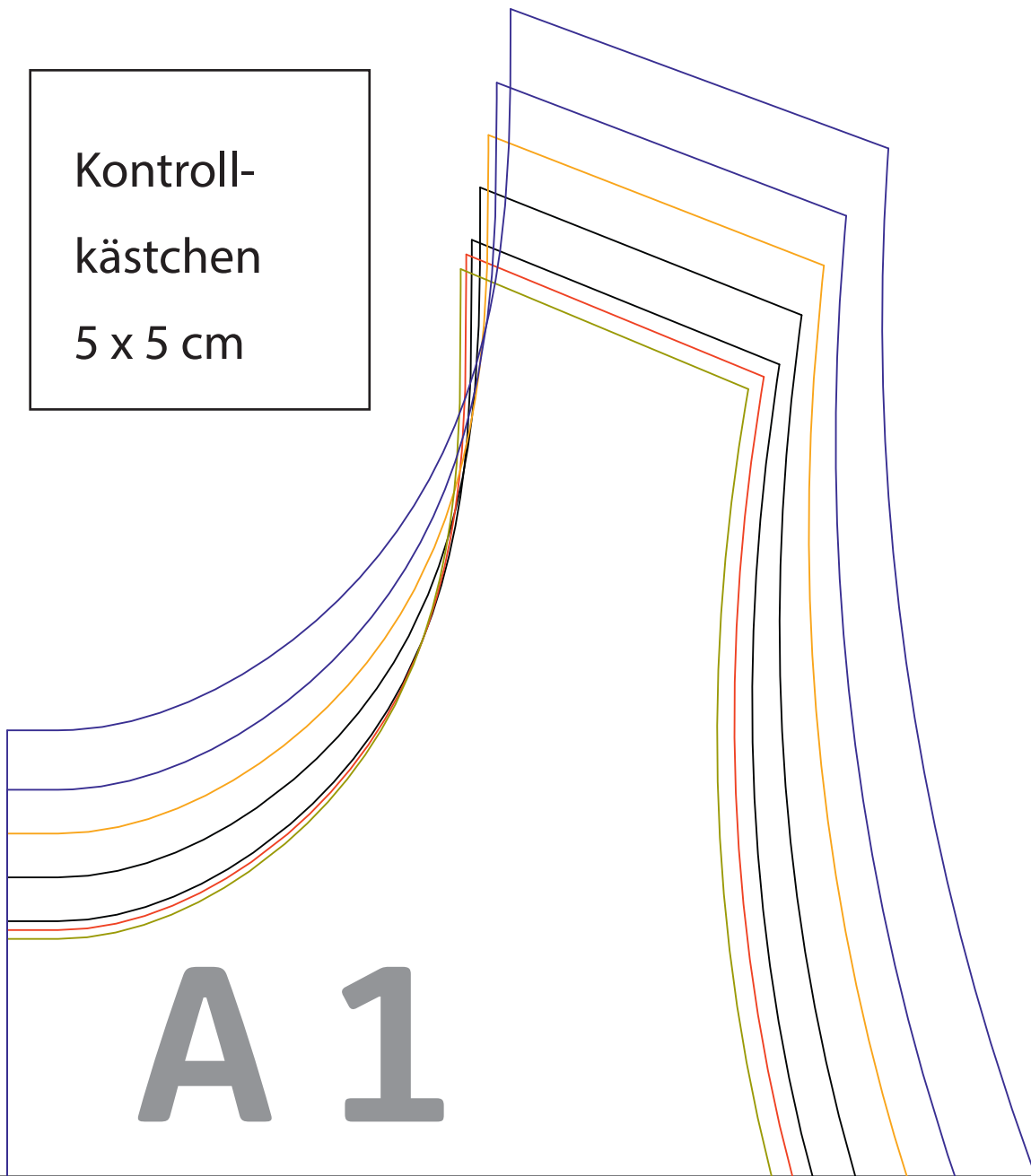
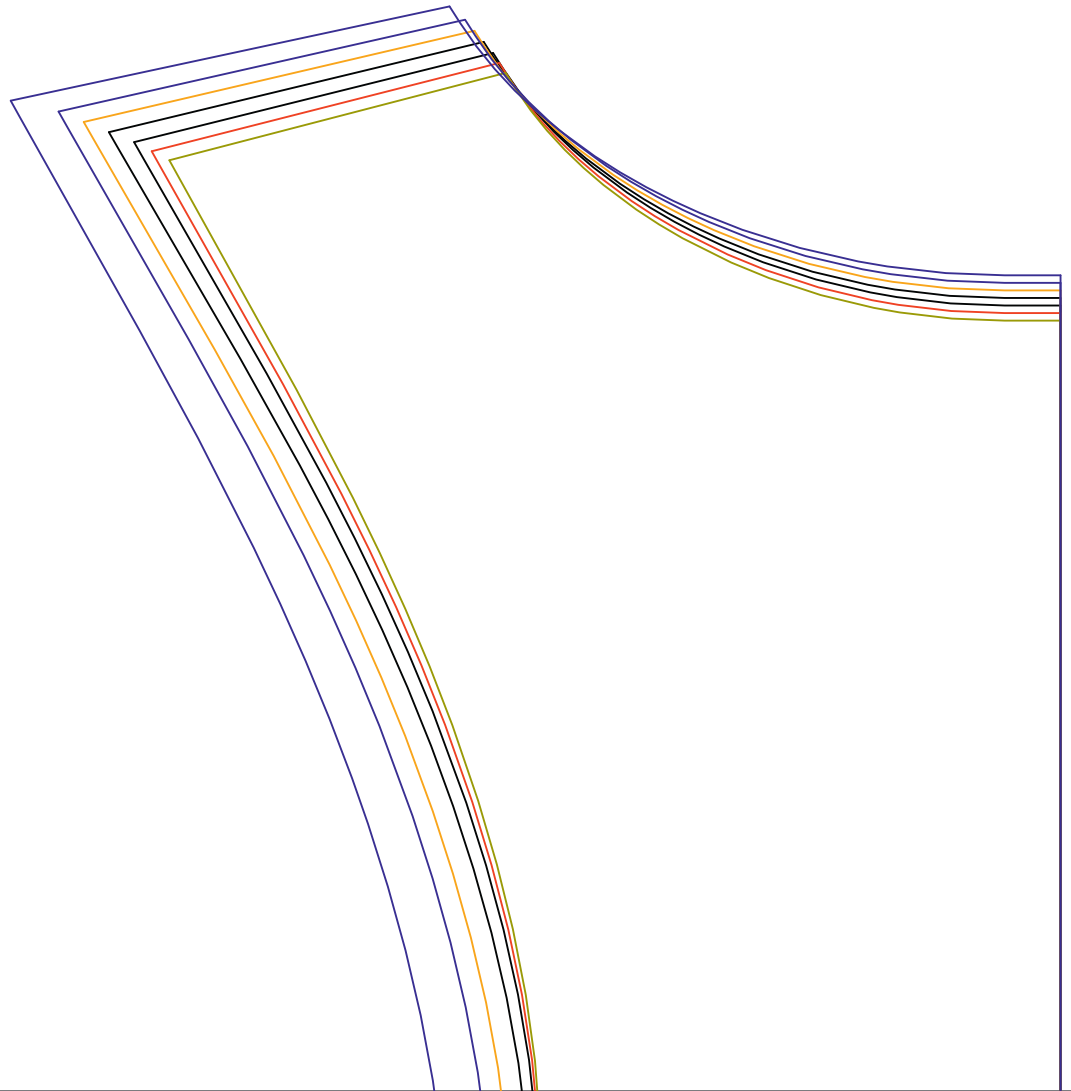


Kontroll-  
kästchen  
5 x 5 cm





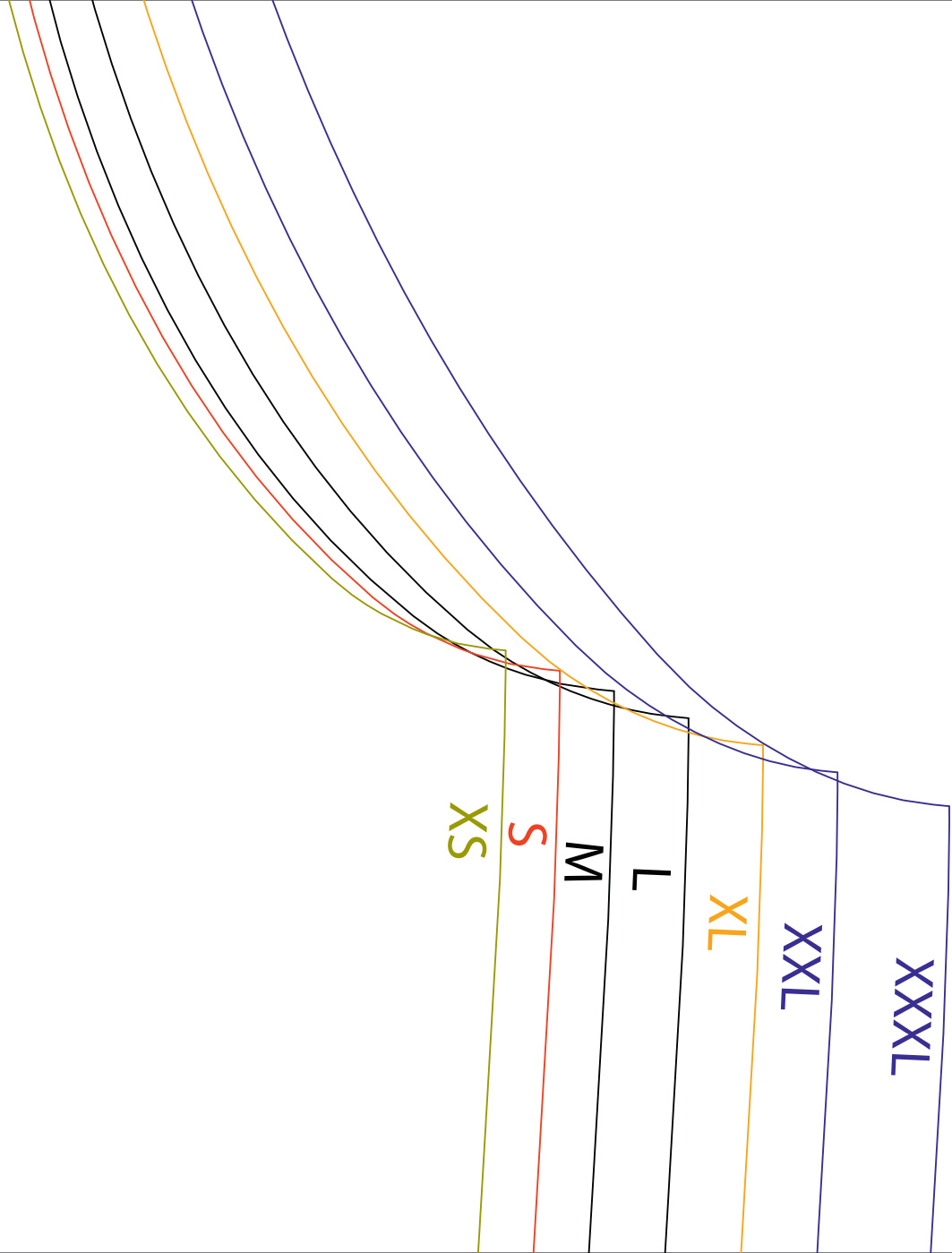
A 3



Vordere Mitte / Stoffbruch / Maschenlauf

**B 1**

Racertop ELLA  
Vorderteil  
1x im Stoffbruch



# B 2

Vordere  
Mitte

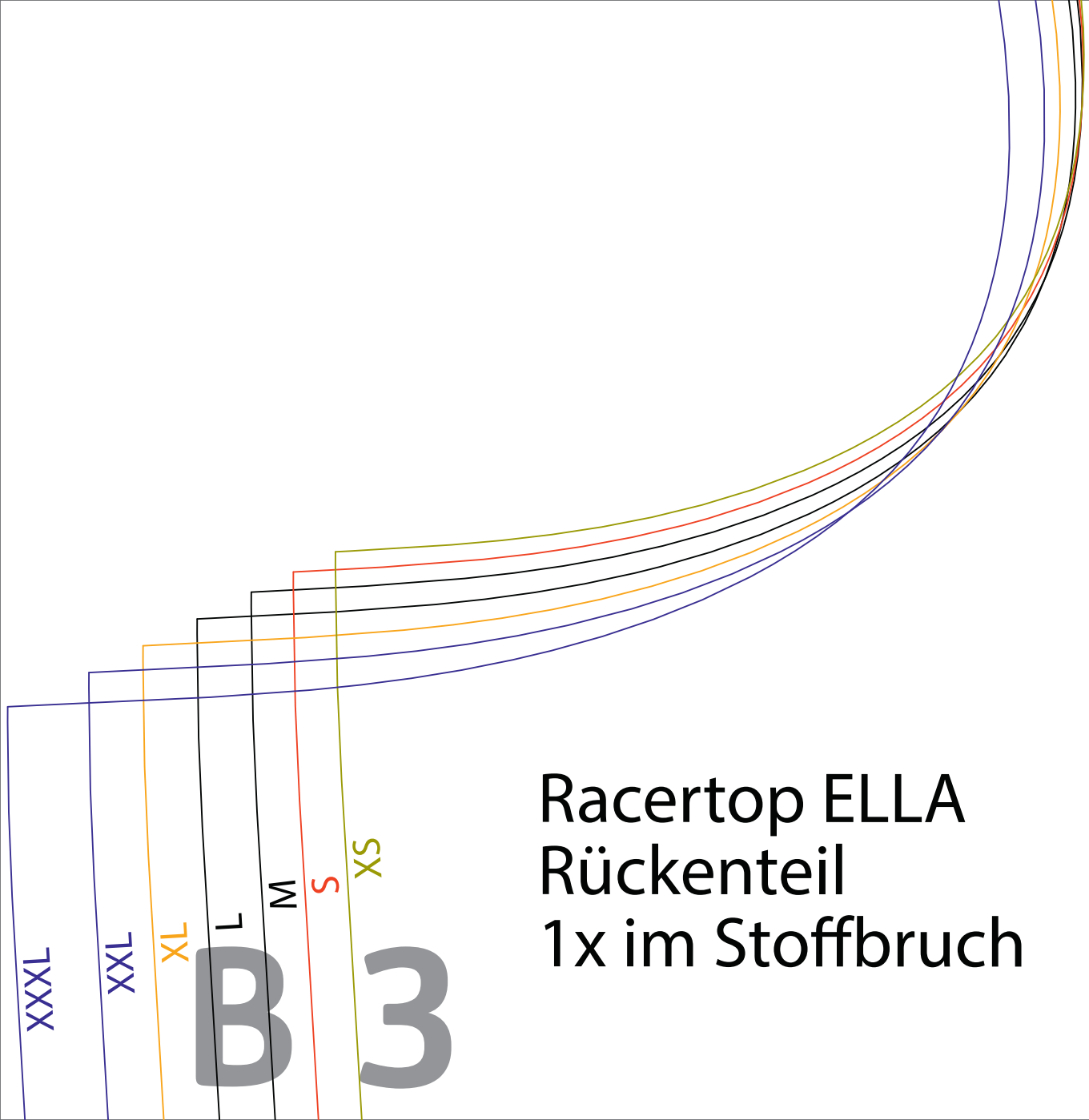
Racertop ELLA  
Halsausschnitt  
1x

Schulter



Stoffe Hemmers

hinten



Racertop ELLA  
Rückenteil  
1x im Stoffbruch

XXXL

TXX

XL

L

M

S

SX

B

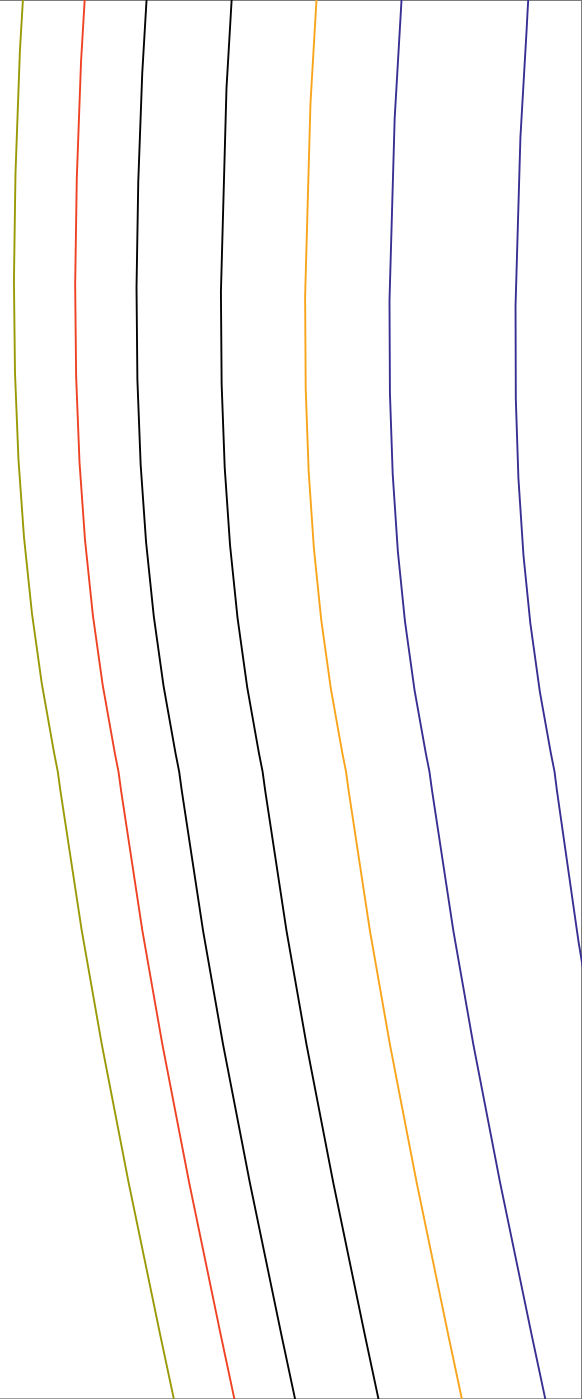
3



# Stoffe Hemmers

[stoffe-hemmers.de](http://stoffe-hemmers.de)

# C 1



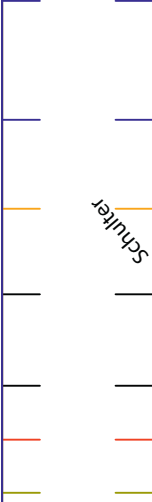
# C 2

Schulter



Stoffe Hemmers

Racertop ELLA  
Armausschnitt  
2x gegengleich



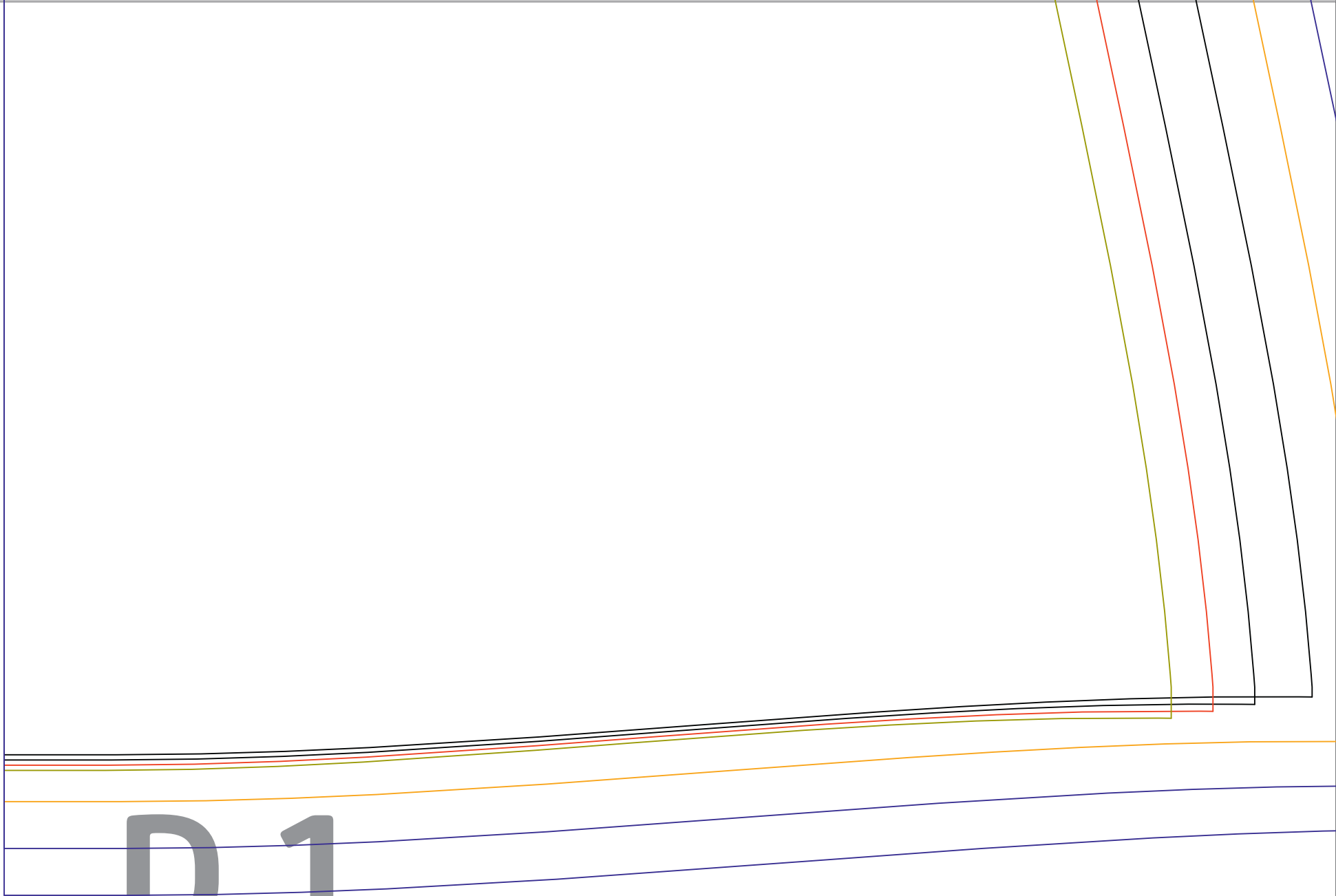


Stoffe Hemmers

[stoffe-hemmers.de](http://stoffe-hemmers.de)

C 3

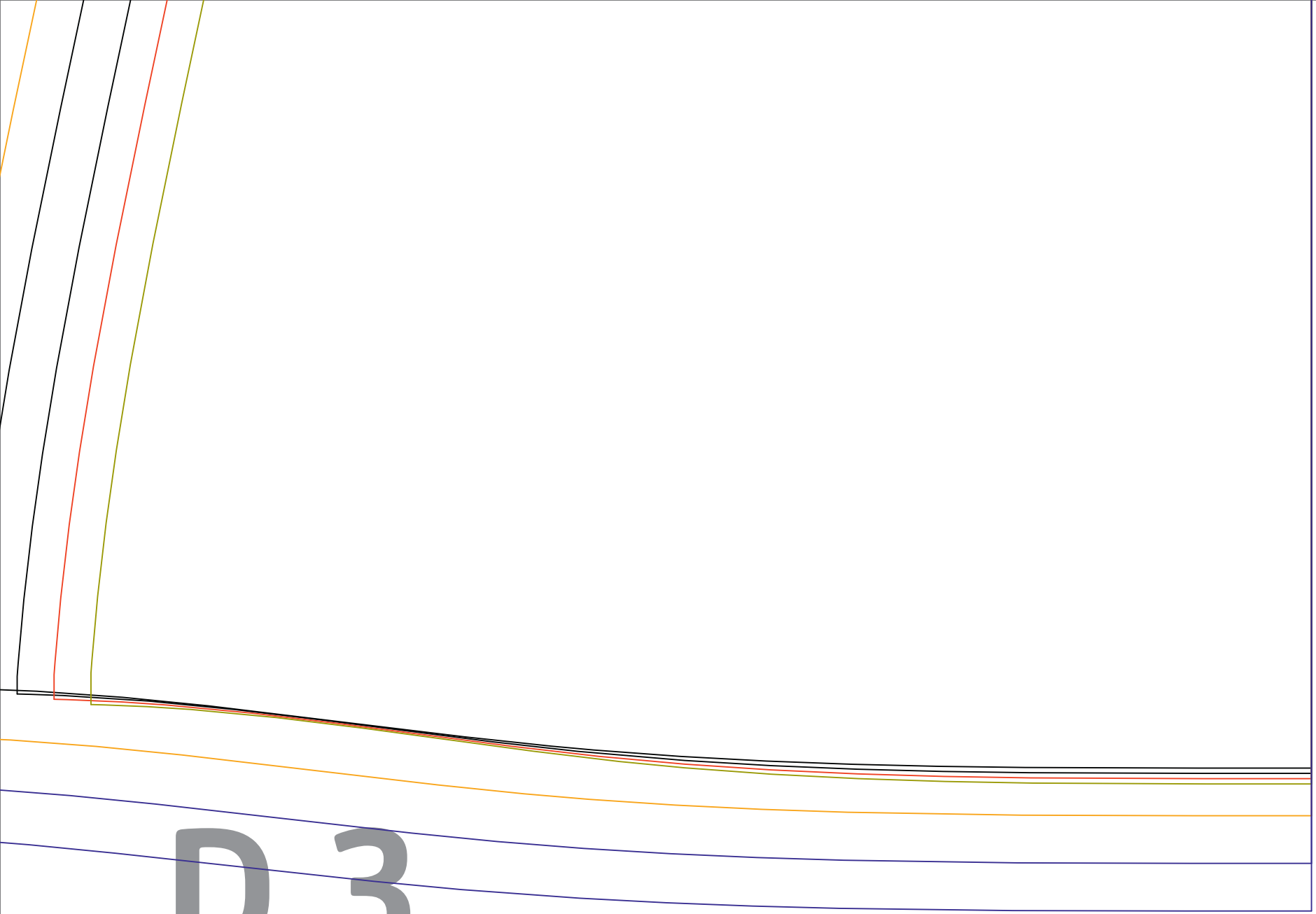
D 1



D 2

vorne





D 3