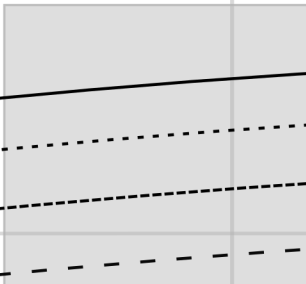




1



SIMIJO



1 - Vorderteil

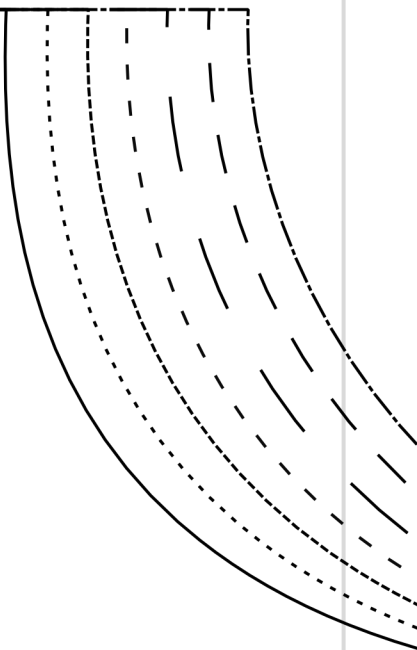
1x im Stoffbruch zu schneiden
Schnitt enthält keine Nahtzugabe

2



SIMIJO

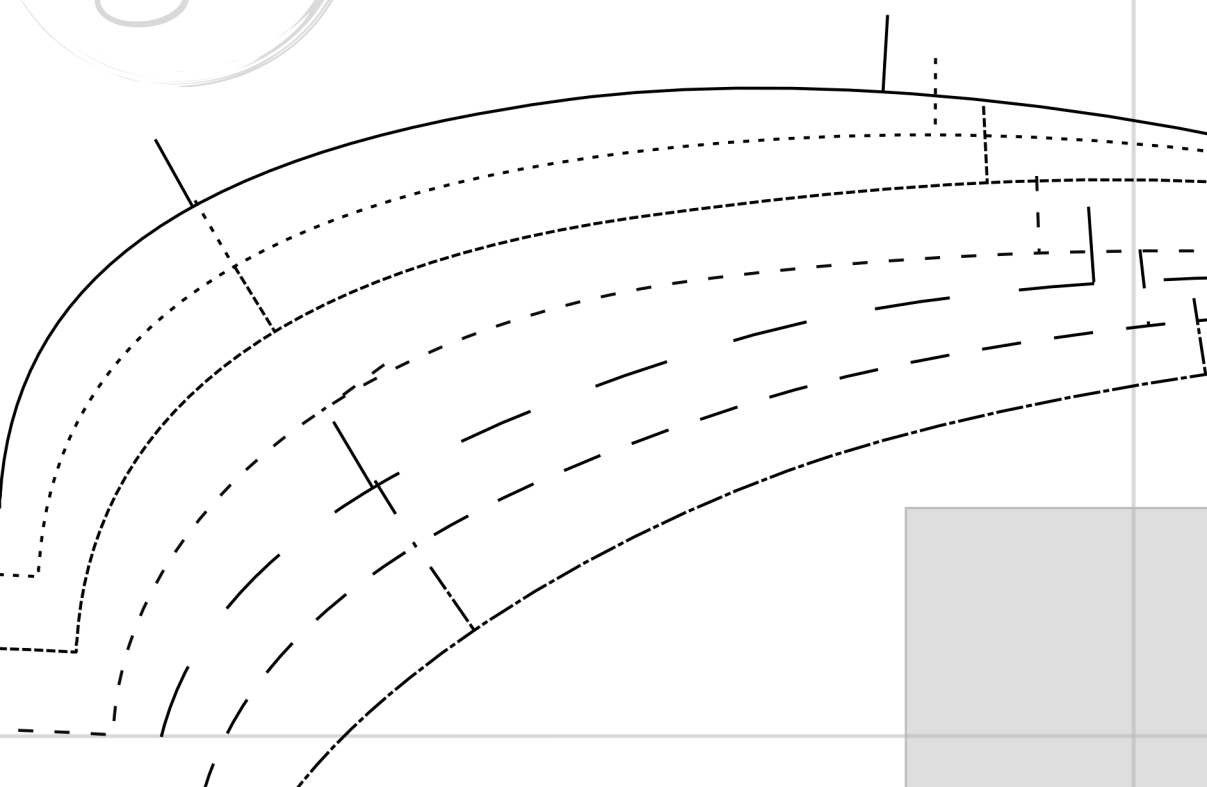
Fadenlauf & Stoffbruch



3



SIMIJO



Simijo - Basic Shirt

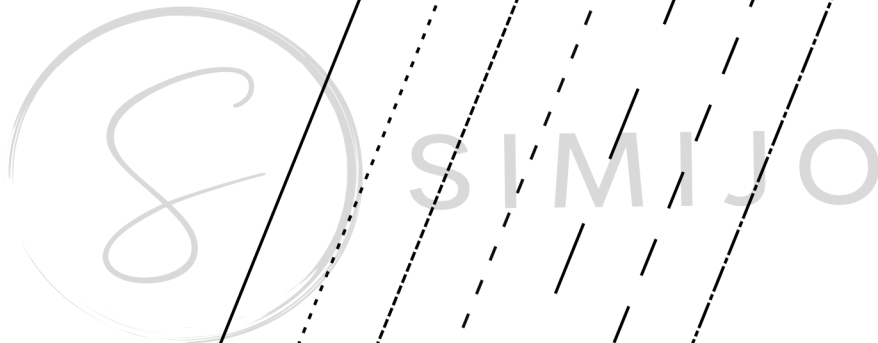
1 - Vorderteil

1x im Stoffbruch zu schneiden



Kontroll-
kästchen

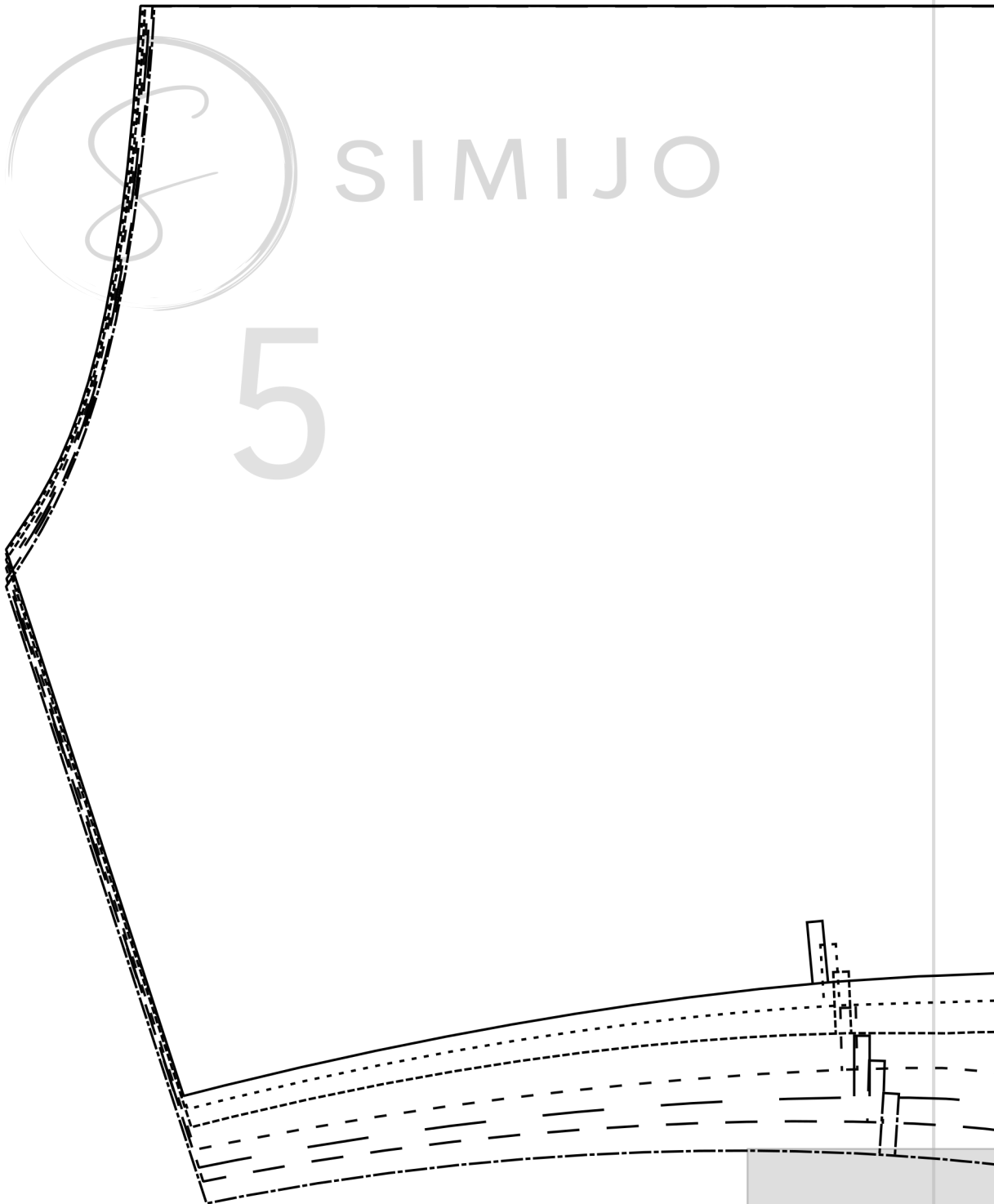
4 x 4 cm

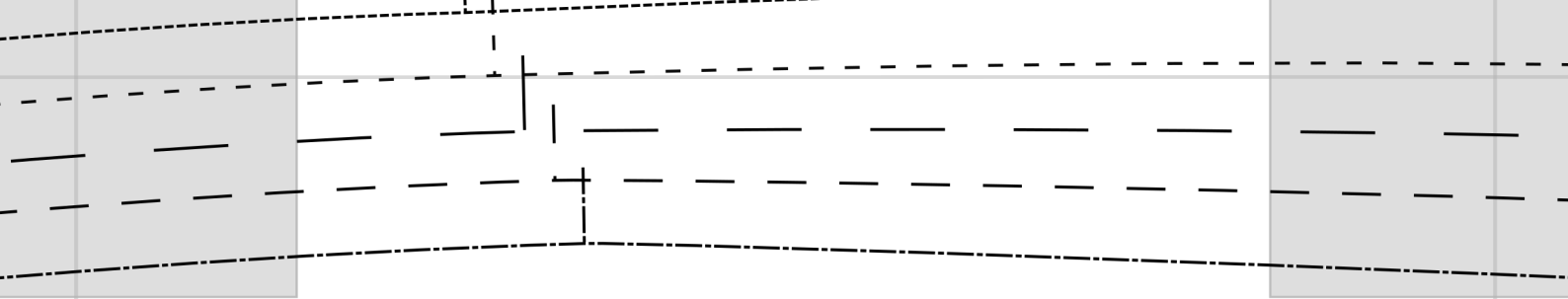




SIMIJO

5

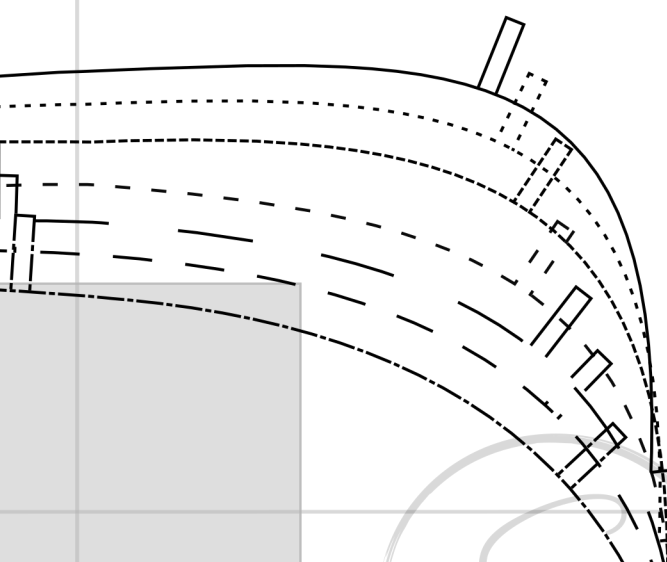




SIMIJO

6

Fadenlau



Simijo - Basic Shirt

2 - Rückenteil

1x im Stoffdruck zu schneiden

2 - Rückenteil

1x im Stoffbruch zu schneiden

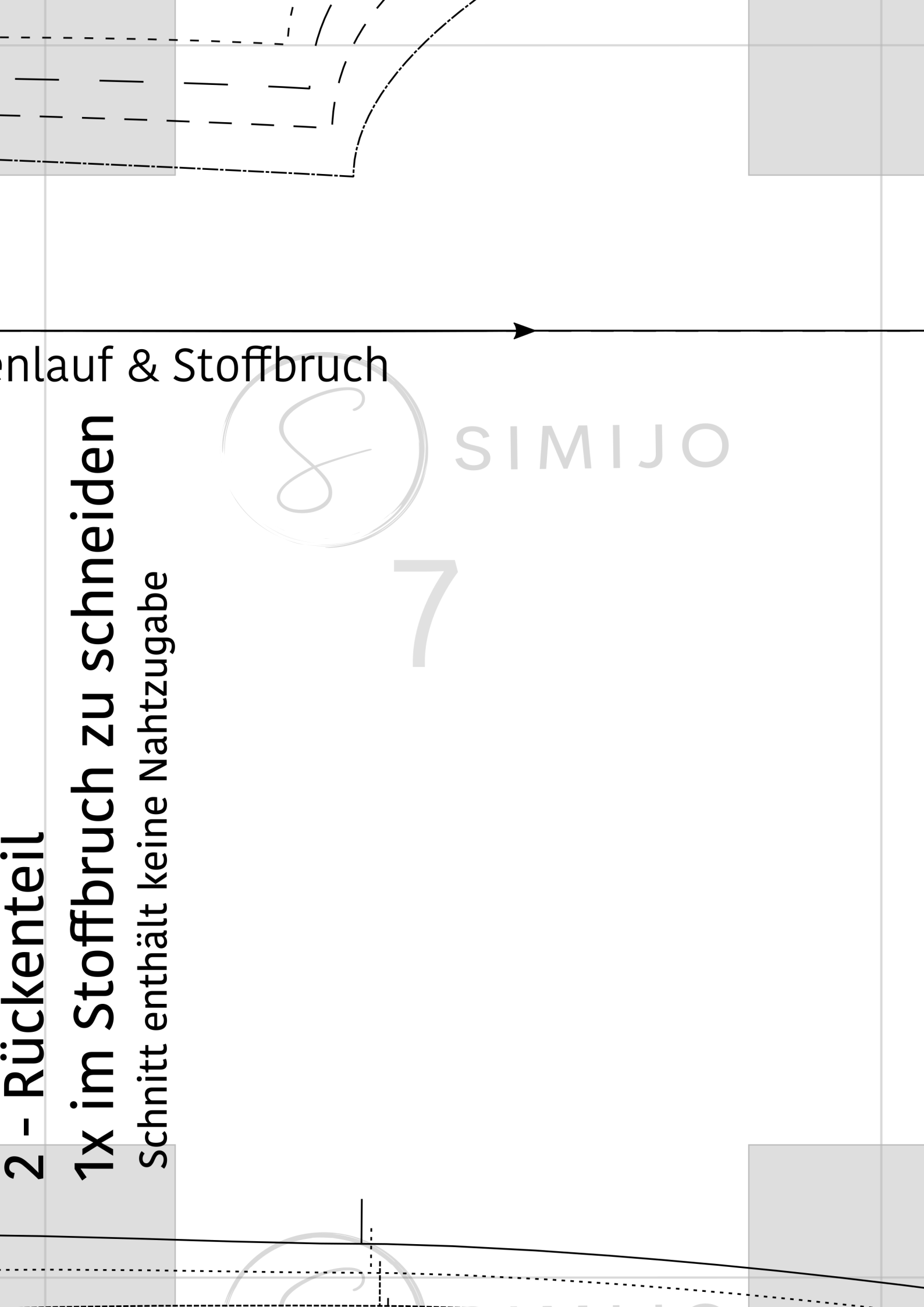
Schnitt enthält keine Nahtzugabe

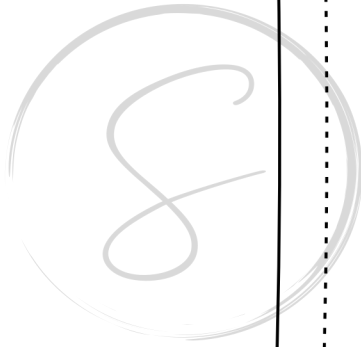
enlauf & Stoffbruch



SIMIJO

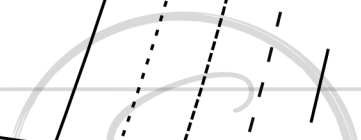
7





SIMIJO

8

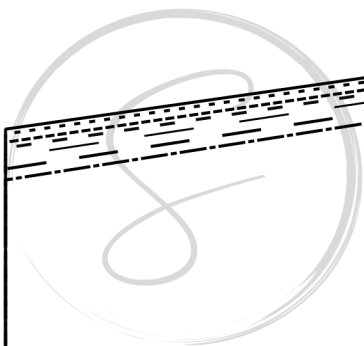


SIMIJO

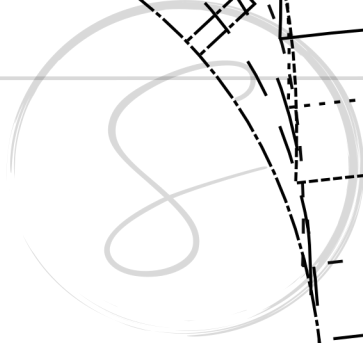


SIMIJO

9



SIMIJO

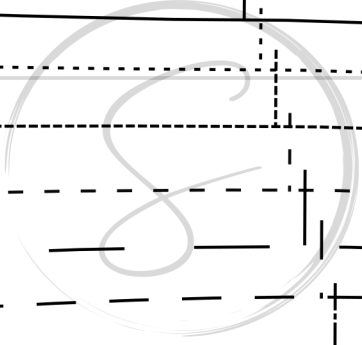


SIMIJO

10

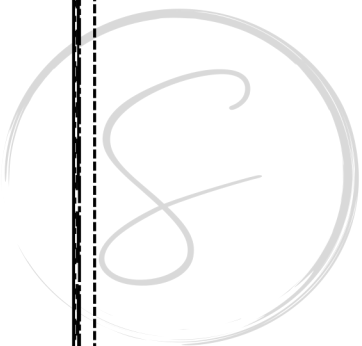


SIMIJO



SIMIJO

11



SIMIJO

Sim
3 - 4
2X g
Schn



SIMIJO

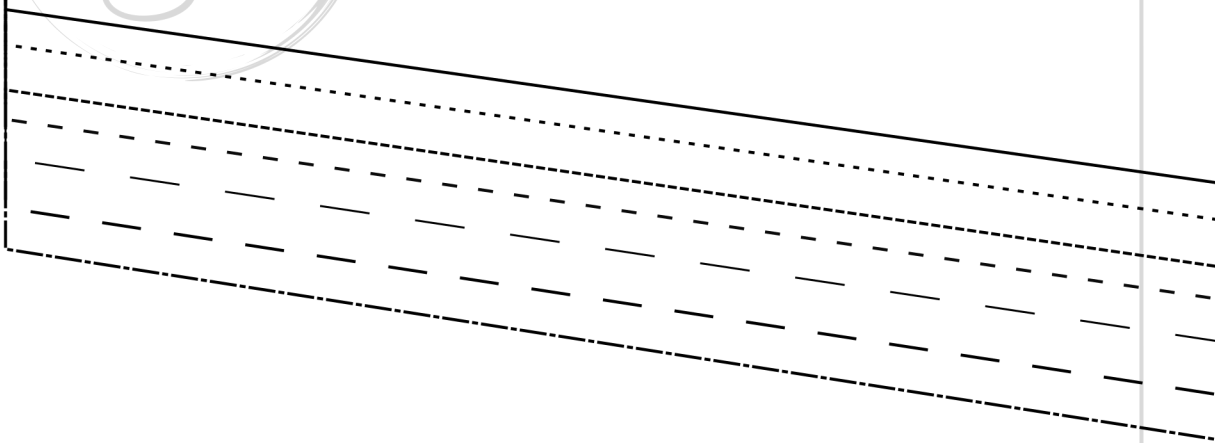
12



SIMIJO

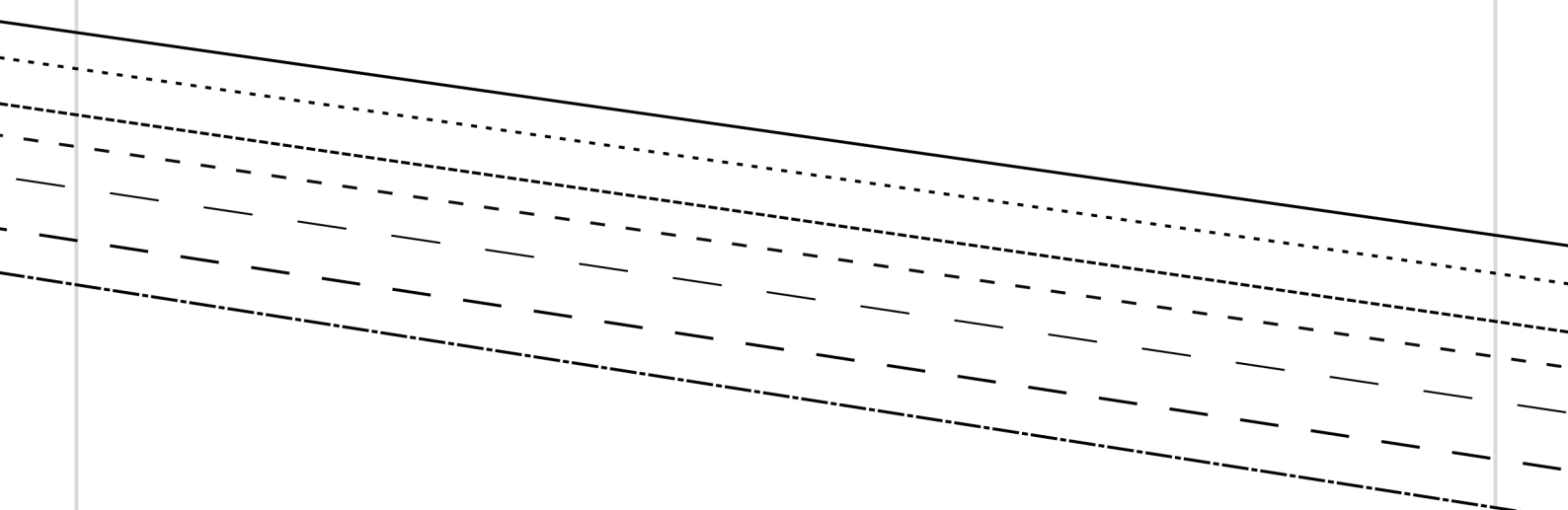


S13 SIMIJO





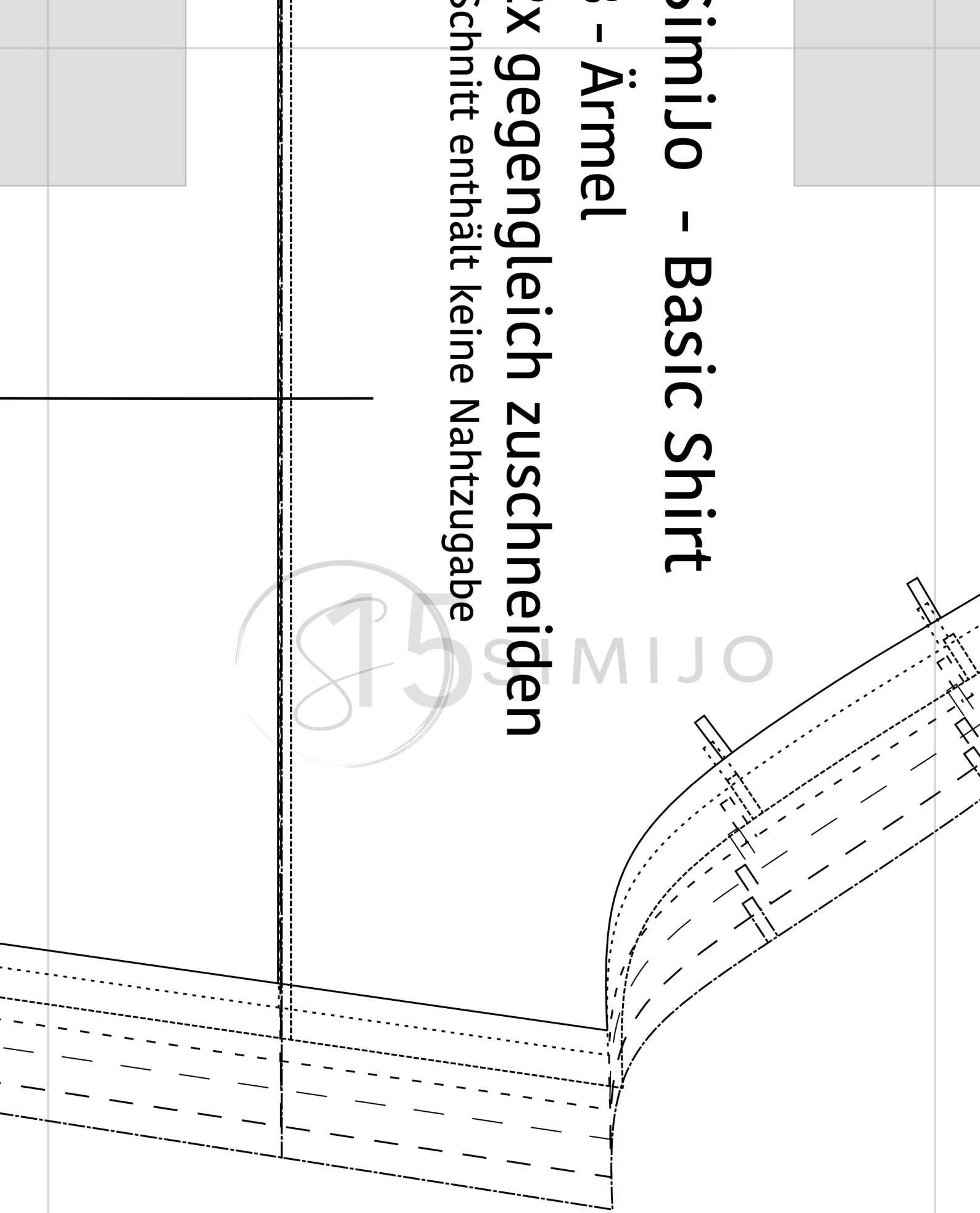
Fadenlauf

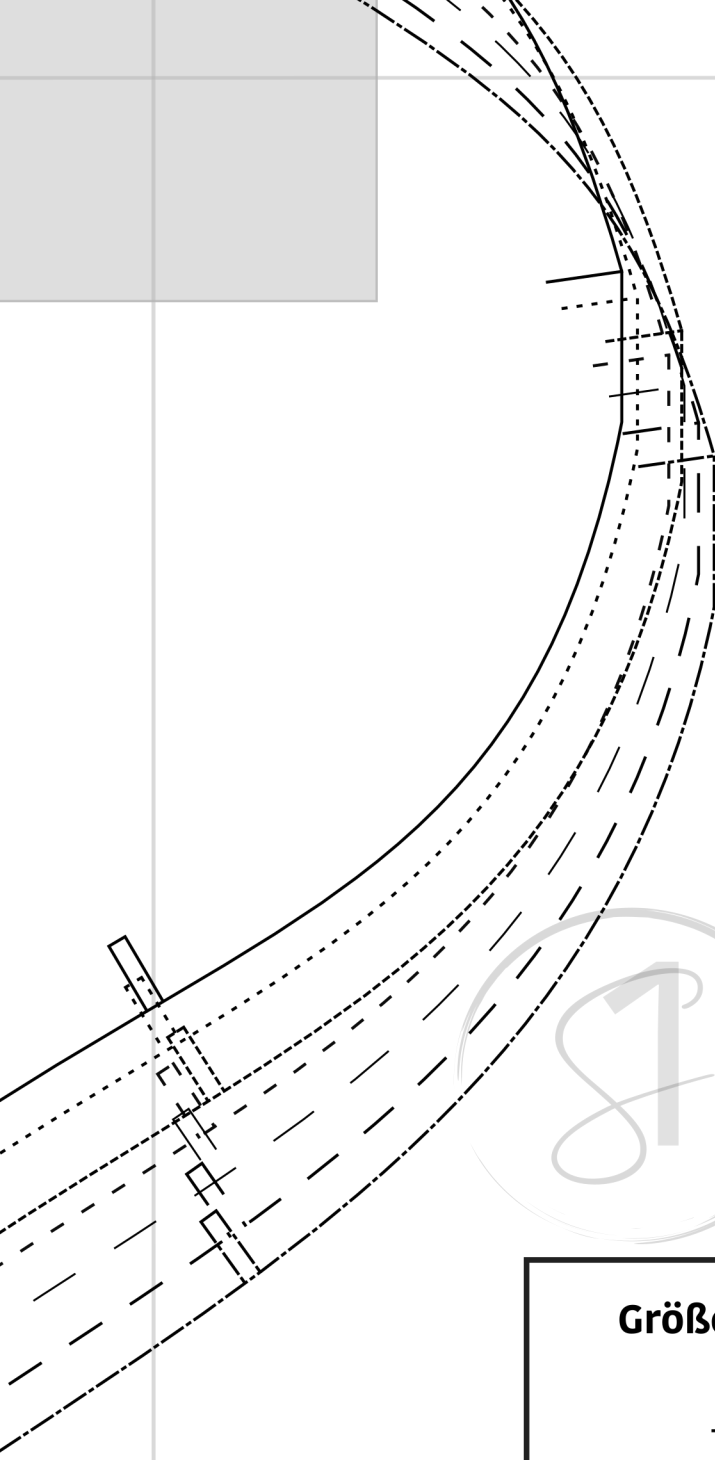


simijo - Basic Shirt

Ärmel

2X gegengleich zuschneiden
Schnitt enthält keine Nahtzugabe





816 SIMIJO

Größen

_____ XS / 34

..... S / 36

..... M / 38

----- L / 40

— — — XL / 42

----- XXL / 44

..... XXXL / 46