

## Modular Tops



crashdebug

VIEW IN BROWSER

updated 11. 11. 2023 | published 11. 11. 2023

## Summary

Modular spinning top toy.

[Toys & Games](#) > [Building Toys](#)

Tags: [toys](#) [modular](#) [nsfw](#) [top](#) [spinningtop](#) [tops](#) [bong](#)  
[cornhole](#) [modulartops](#)

Modular Tops was inspired by the idea to build a simple custom spinning top together with my daughter. After printing the first prototype, the design kept getting more and more modular. It wasn't long before an optional mechanical starter mechanism was added.

Parts like the tip and handles were difficult for her to remove, so I started adding features to allow easy fastening and removing of parts. The starter can be used as a wrench tool on most of the smaller parts.

In the end I spent much more time on tweaking and refining all the parts than originally expected. I think the outcome is a pretty nice universal and modular top construction kit.

**ModularTopsV3\_all\_parts\_v1.2.zip** contains all parts sorted in folders and the pdf booklet.

**New:** use the [Disc Generator](#) to create your personalized disc-addons in customizer!

### **Update v1.1 (2019-02-26)**

- Added longer starter cords
- Added HS05 starter handle with double disc receiver

Added B12 Flybody 100 with flight capabilities

### **Update v1.2 (2019-03-04)**

[Disc Generator](#) for customizer is now available

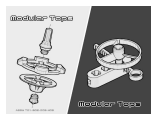
- Fixed printing orientation of starter
- Added a large starter for easier gripping

### **Printing notes**

- Tested in PLA with 0.3mm resolution and 30% infill
- The heavy body (B06) and heavy disc (D05) should be printed with 80%+ infill for longer spinning time
- The body for the inverting top (B10) should be printed with 80%+ infill to achieve the required center of gravity

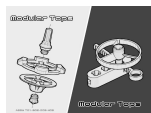
The turbine body (B04) is the only part with difficult overhangs, results may vary depending on printer

## **This remix is based on**



**Modular Tops**

by crashdebug



**Modular Tops**

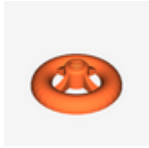
by crashdebug

# Model files



**modulartopsv3\_handles\_hr02rot.stl**

---



**modulartopsv3\_bodies\_b06rot.stl**

---



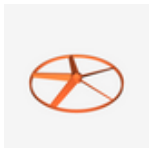
**modulartopsv3\_handles\_hs04rot.stl**

---



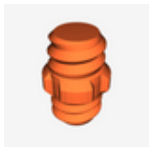
**modulartopsv3\_bodies\_b04rot.stl**

---



**modulartopsv3\_bodies\_b12-5.stl**

---



**modulartopsv3\_connectors\_c02.stl**

---



**modulartopsv3\_discs\_sp01\_2p5mm.stl**

---



**modulartopsv3\_starter\_8mm\_large.stl**

---



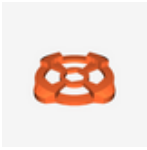
**modulartopsv3\_tips\_t07.stl**

---



**modulartopsv3\_tips\_t06.stl**

---



**modulartopsv3\_discs\_d03.stl**

---



**modulartopsv3\_starter\_cord\_longer.stl**

---



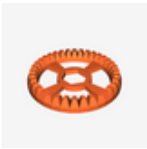
**modulartopsv3\_discs\_sp02\_3p0mm.stl**

---



**modulartopsv3\_discs\_sp03\_3p5mm.stl**

---



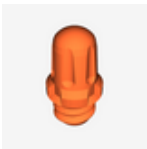
**modulartopsv3\_discs\_d02.stl**

---



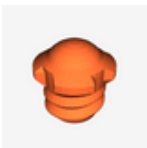
**modulartopsv3\_bodies\_b08rot.stl**

---



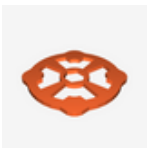
**modulartopsv3\_handles\_h02.stl**

---



**modulartopsv3\_tips\_t03.stl**

---



**modulartopsv3\_discs\_d06.stl**

---



**modulartopsv3\_handles\_hr01.stl**

---



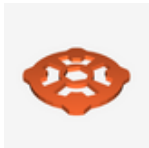
**modulartopsv3\_tips\_t05.stl**

---



**modulartopsv3\_bodies\_b09-4rot.stl**

---



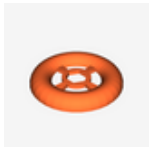
**modulartopsv3\_discs\_d04.stl**

---



**modulartopsv3\_starter\_cord.stl**

---



**modulartopsv3\_discs\_d05.stl**

---



**modulartopsv3\_bodies\_b11rot.stl**

---



**modulartopsv3\_handles\_hr03rot.stl**

---



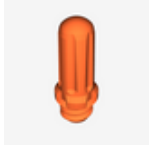
**modulartopsv3\_handles\_hs01rot.stl**

---



**modulartopsv3\_connectors\_c04rot.stl**

---



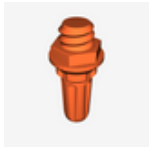
**modulartopsv3\_handles\_h01.stl**

---



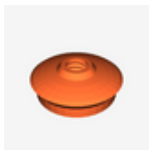
**modulartopsv3\_tips\_t02.stl**

---



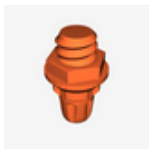
**modulartopsv3\_handles\_h03rot.stl**

---



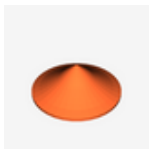
**modulartopsv3\_bodies\_b07rot.stl**

---



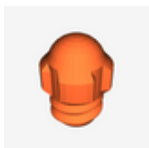
**modulartopsv3\_handles\_h04rot.stl**

---



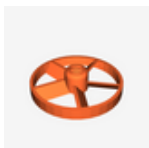
**modulartopsv3\_bodies\_b03rot.stl**

---



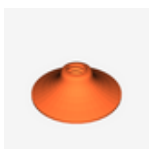
**modulartopsv3\_tips\_t04.stl**

---



**modulartopsv3\_bodies\_b09-5rot.stl**

---



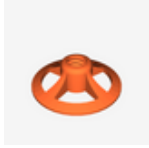
**modulartopsv3\_bodies\_b01rot.stl**

---

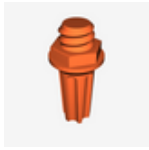


**modulartopsv3\_starter\_8mm.stl**

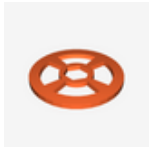
---



**modulartopsv3\_bodies\_b02rot.stl**



**modulartopsv3\_handles\_hr04rot.stl**



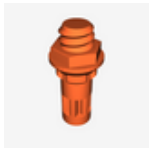
**modulartopsv3\_discs\_d01.stl**



**modulartopsv3\_connectors\_c03.stl**



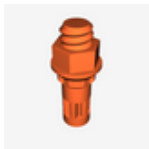
**modulartopsv3\_bodies\_b09-3rot.stl**



**modulartopsv3\_handles\_hs03rot.stl**



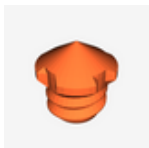
**modulartopsv3\_bodies\_b10rot.stl**



**modulartopsv3\_handles\_hs05rot.stl**



**modulartopsv3\_handles\_hs02rot.stl**



**modulartopsv3\_tips\_t01.stl**



**modulartopsv3\_bodies\_b05rot.stl**

---



**modulartopsv3\_starter\_cord\_long.stl**

---



**modulartopsv3\_connectors\_c01.stl**

---



**modulartopsv3\_bodies\_b05rot.stl**

---



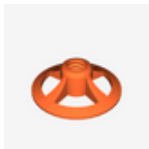
**modulartopsv3\_bodies\_b10rot.stl**

---



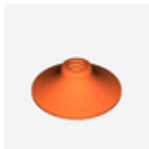
**modulartopsv3\_bodies\_b09-3rot.stl**

---



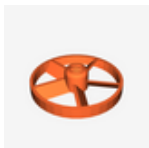
**modulartopsv3\_bodies\_b02rot.stl**

---



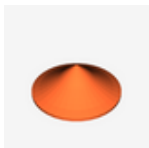
**modulartopsv3\_bodies\_b01rot.stl**

---



**modulartopsv3\_bodies\_b09-5rot.stl**

---



**modulartopsv3\_bodies\_b03rot.stl**

---





**modulartopsv3\_bodies\_b07rot.stl**

---



**modulartopsv3\_bodies\_b11rot.stl**

---



**modulartopsv3\_bodies\_b09-4rot.stl**

---



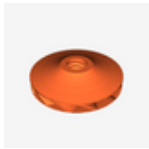
**modulartopsv3\_bodies\_b08rot.stl**

---



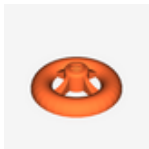
**modulartopsv3\_bodies\_b12-5.stl**

---



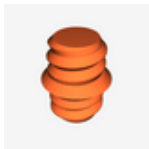
**modulartopsv3\_bodies\_b04rot.stl**

---



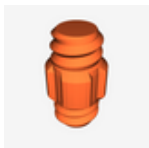
**modulartopsv3\_bodies\_b06rot.stl**

---



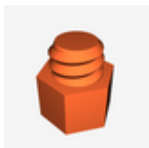
**modulartopsv3\_connectors\_c01.stl**

---



**modulartopsv3\_connectors\_c03.stl**

---



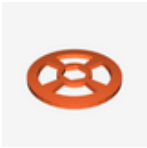
**modulartopsv3\_connectors\_c04rot.stl**

---



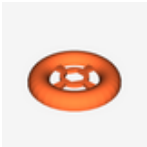
**modulartopsv3\_connectors\_c02.stl**

---



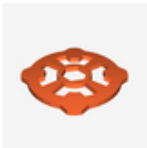
**modulartopsv3\_discs\_d01.stl**

---



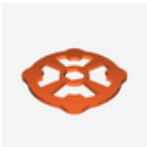
**modulartopsv3\_discs\_d05.stl**

---



**modulartopsv3\_discs\_d04.stl**

---



**modulartopsv3\_discs\_d06.stl**

---



**modulartopsv3\_discs\_d02.stl**

---



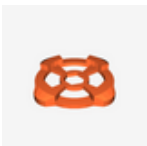
**modulartopsv3\_discs\_sp03\_3p5mm.stl**

---



**modulartopsv3\_discs\_sp02\_3p0mm.stl**

---



**modulartopsv3\_discs\_d03.stl**

---



**modulartopsv3\_discs\_sp01\_2p5mm.stl**

---



**modulartopsv3\_handles\_hs05rot.stl**

---



**modulartopsv3\_handles\_hs02rot.stl**

---



**modulartopsv3\_handles\_hs03rot.stl**

---



**modulartopsv3\_handles\_hr04rot.stl**

---



**modulartopsv3\_handles\_h04rot.stl**

---



**modulartopsv3\_handles\_h03rot.stl**

---



**modulartopsv3\_handles\_h01.stl**

---



**modulartopsv3\_handles\_hr03rot.stl**

---



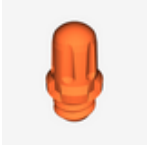
**modulartopsv3\_handles\_hs01rot.stl**

---



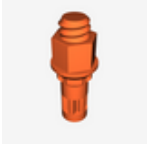
**modulartopsv3\_handles\_hr01.stl**

---



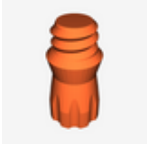
**modulartopsv3\_handles\_h02.stl**

---



**modulartopsv3\_handles\_hs04rot.stl**

---



**modulartopsv3\_handles\_hr02rot.stl**

---



**modulartopsv3\_starter\_cord\_long.stl**

---



**modulartopsv3\_starter\_8mm.stl**

---



**modulartopsv3\_starter\_cord.stl**

---



**modulartopsv3\_starter\_cord\_longer.stl**

---



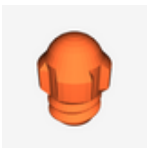
**modulartopsv3\_starter\_8mm\_large.stl**

---



**modulartopsv3\_tips\_t01.stl**

---



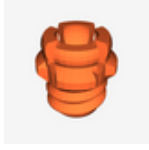
**modulartopsv3\_tips\_t04.stl**

---



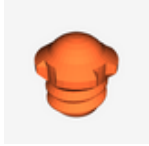
**modulartopsv3\_tips\_t02.stl**

---



**modulartopsv3\_tips\_t05.stl**

---



**modulartopsv3\_tips\_t03.stl**

---



**modulartopsv3\_tips\_t06.stl**

---



**modulartopsv3\_tips\_t07.stl**

[Find source .stl files on Thingiverse.com](https://www.thingiverse.com)

## License

This work is licensed under a  
[Creative Commons \(4.0 International License\)](https://creativecommons.org/licenses/by-nc-sa/4.0/)



**Attribution—Noncommercial—Share Alike**

---

- ✘ | Sharing without ATTRIBUTION
- ✔ | Remix Culture allowed
- ✘ | Commercial Use
- ✘ | Free Cultural Works
- ✘ | Meets Open Definition